

Self-retracting fall arrester with a cable length of 35 m, equipped with handled mechanism for retrieval. Can be used as a normal self-retracting fall arrester, the retrieval winch can be easily activated to safely rescue the worker in the event of an accident.

It can be installed hanging from an anchor point or fixed to the Tripods tripod legs using the special Cobra Lift Bracket (supplied separately).

Swivel connector equipped with fall indicator.

Galvanized steel cable d.4.8 mm. Working load limit: 150 kg.

Aluminum protection cover.



| Ref. | Product name Nombre del producto | Weight Peso | | Working load Max Carga de trabajo Max | CE | STANDARD |
|------|-------------------------------------|----------------|-------|------------------------------------------|--------|-----------|
| | | kg | oz | | | |
| 3505 | COBRA LIFT 35 m | 19.7 | 695.4 | 150 | EN 360 | EN 1496/B |

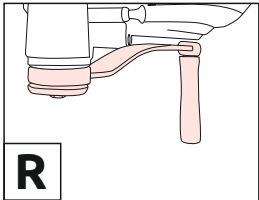
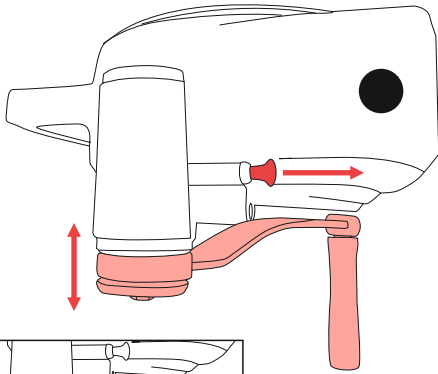
COBRA LIFT fixed to the Tripos tripod legs using the special Cobra Lift Bracket (ref.3506)



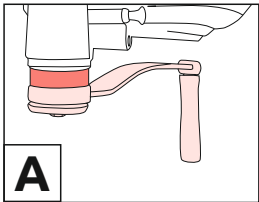
Cobra Lift Bracket (ref.3506)

Bracket for fastening the Cobra Lift device on the legs of the Tripos tripod.

COBRA LIFT selection of operating modes
 COBRA LIFT selezione modalità di funzionamento
 COBRA LIFT sélection des modalités de fonctionnement

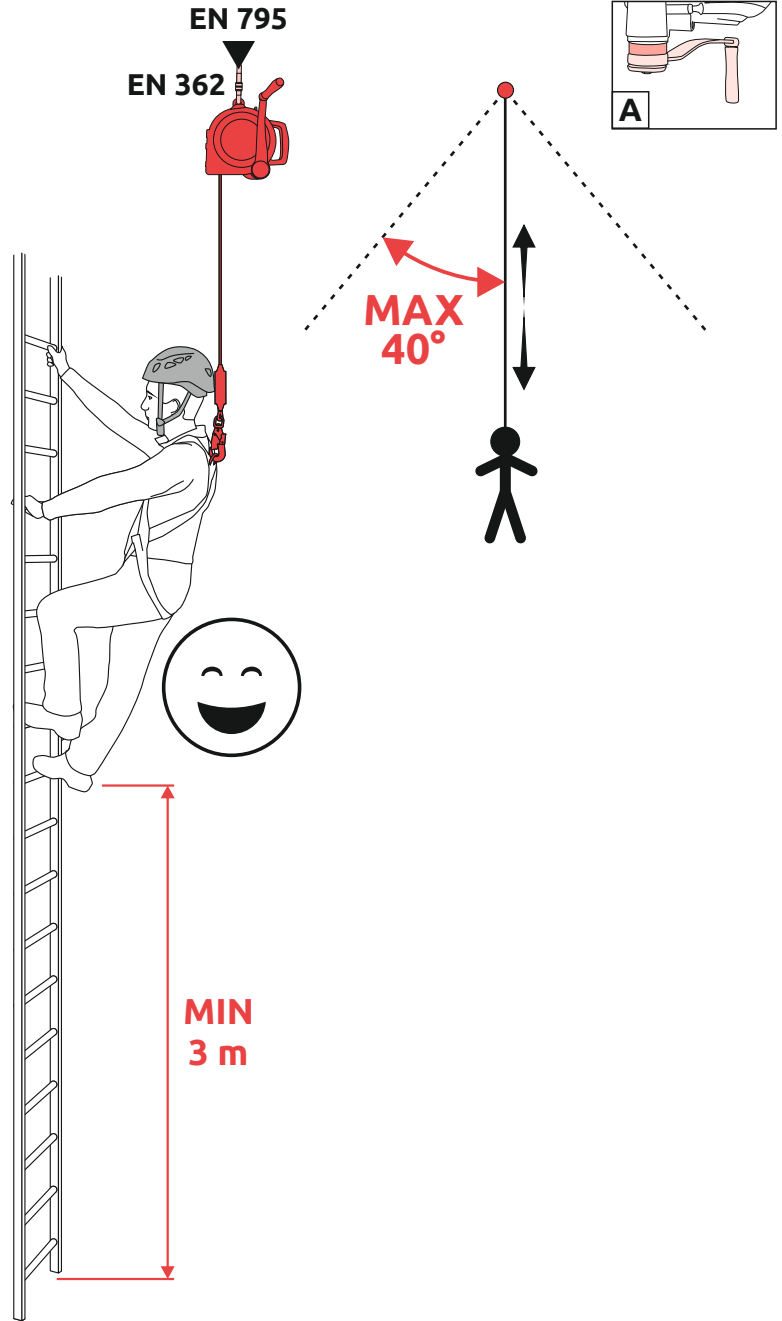


RESCUE
 SOCCORSO
 SECOURS

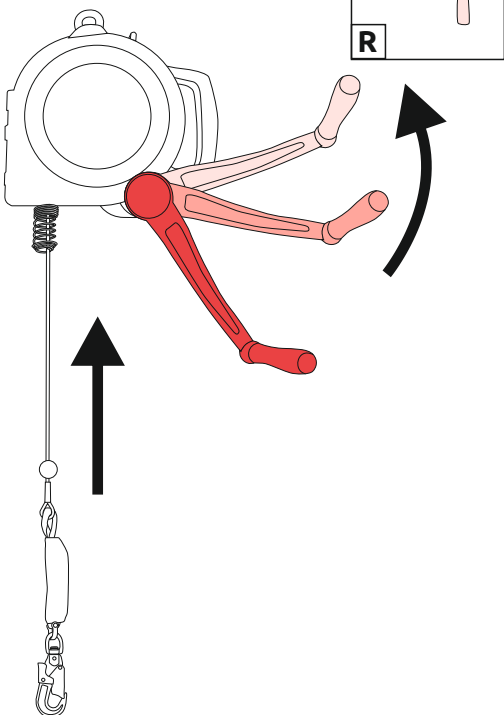


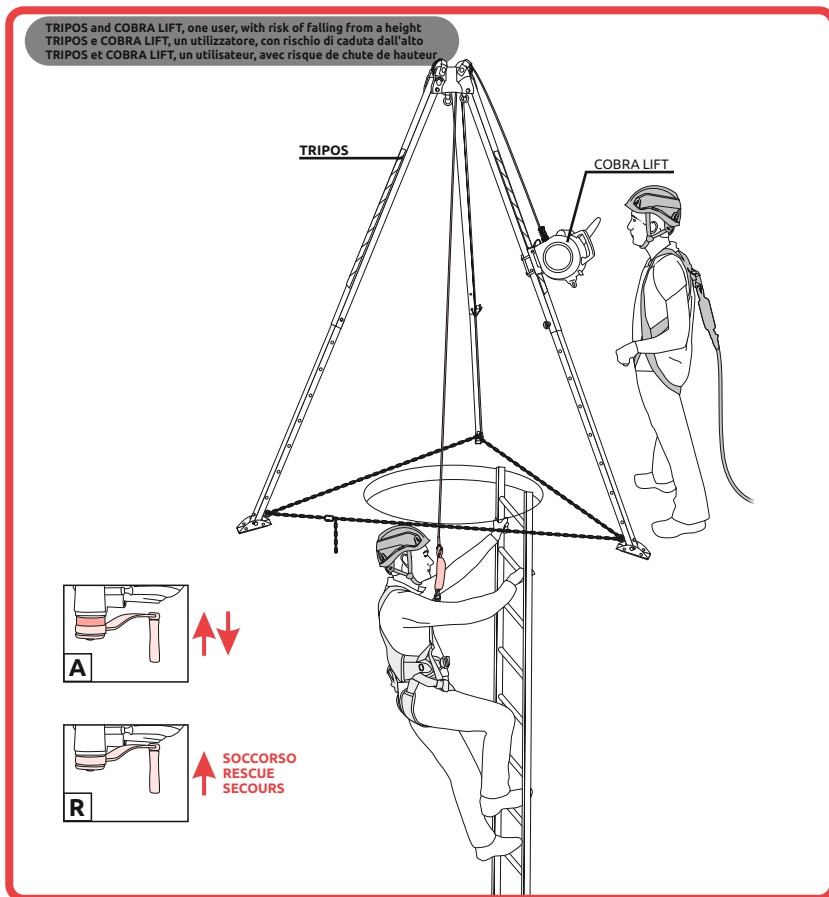
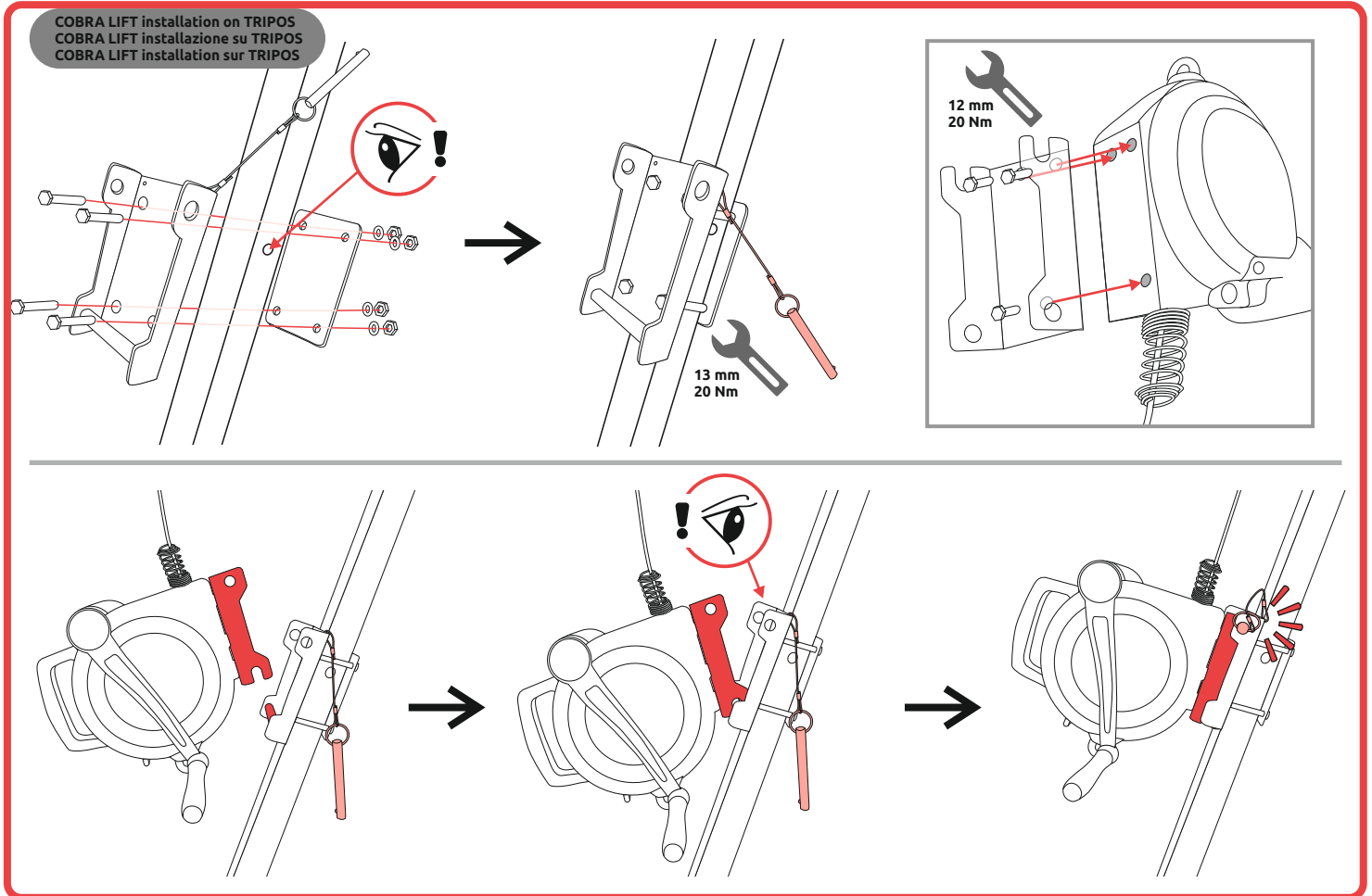
FALL ARREST
 ANTICADUTA
 ANTICHUTE

COBRA LIFT vertical use EN 360
 COBRA LIFT uso verticale EN 360
 COBRA LIFT utilisation verticale EN 360



COBRA LIFT rescue recovery
 COBRA LIFT recupero di soccorso
 COBRA LIFT récupération par sauvetage





TRIPOS and two COBRA LIFT, two users, with risk of falling from a height
 TRIPOS e due COBRA LIFT, due utilizzatori, con rischio di caduta dall'alto
 TRIPOS et deux COBRA LIFT, deux utilisateurs, avec risque de chute de hauteur

