

Ref.2233 **DRUID PRO**



Ref.2233 DRUID PRO

A lightweight, compact auto-braking descender for rope access and rescue designed for semi-static ropes ranging from 10-11 mm.

Designed for expert users; the lever does not have the anti-panic function. The body and lever are made of robust hot-forged aluminum alloy. Mechanical parts are made of precision-cast stainless steel.

The internal mechanism and locking cam use a patented design for smooth action on the rope which prevents rapid wear-and-tear and absorbs energy from small shocks with a slight amount of rope slippage. The fluid action on the rope also allows the Druid to function well for rope ascent. The cam can be deactivated with a trigger to allow quick sliding of the rope in situations with no load or limited load. Steel ring for attaching a keeper cord.

Standards:

- EN 12841/C as a descender of the working line for workers up to 120 kg; can also be used for rope access rescue up to 200 kg.
- EN 341/2A as an emergency evacuation device on a single line for workers up to 120 kg, 11 mm semi-static rope (Lithium 11 mm).
- EN 15151-1 for climbing structures using mountaineering techniques with dynamic ropes ranging from 9.9 to 11 mm.

ROPE ACCESS TREE CLIMBING CONFINED SELF RESCUE
TEAM RESCUE



Ref.	Product name Nombre del producto	Weight Peso		Breaking load Carga de rotura	Rope diameter Diámetro de cuerda		CE		STANDARD	Rescue use Uso en rescate	EAC
		g	oz		Min - mm	Max - mm	EN 12841/C	EN 15151-1			
2233	DRUID PRO	280	9.9	15	9.9	11	•	•	•	Max 200 kg	•
223301	DRUID PRO BLACK										

Ref.2233 **DRUID PRO**



- ① Back Flange: hot forged aeronautic grade aluminum alloy for high strength and resistance to wear-and-tear.
- ② Front Flange: hot forged aeronautic grade aluminum alloy with markings to indicate the proper direction for inserting the rope.
- ③ Attachment Hole: large diameter allows for complete rotation of a locking carabiner. The carabiner cannot be attached unless the device is completely closed.
- ④ Lowering Lever: hot forged aeronautic grade aluminum alloy and precision cast stainless steel with an ergonomic shape and double hinge for good leverage and control when lowering.
- ⑤ Fixed Cam: precision cast stainless steel for high strength and resistance to wear-and-tear. Also serves as a rope guide when lowering to limit contact between the rope and the aluminum side walls.
- ⑥ Mobile Cam: precision cast stainless steel with proprietary geometry that allows the cam to rotate into place alongside the rope. This makes the action very rope-friendly.
- ⑦ Cam Trigger: the small flange on the bottom of the Mobile Cam can be used to momentarily hold the cam open for paying out slack or to initiate a descent when there is a lot of friction.
- ⑧ Lowering mechanism without anti-panic function, designed for expert users.
- ⑨ Rivets: Precision CNC stainless steel. The large diameter and precision pressing ensure exceptional strength and performance over the life of the device.
- ⑩ Hole to insert a cord for securing the device, preventing it from falling.



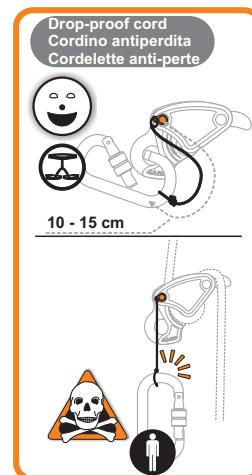
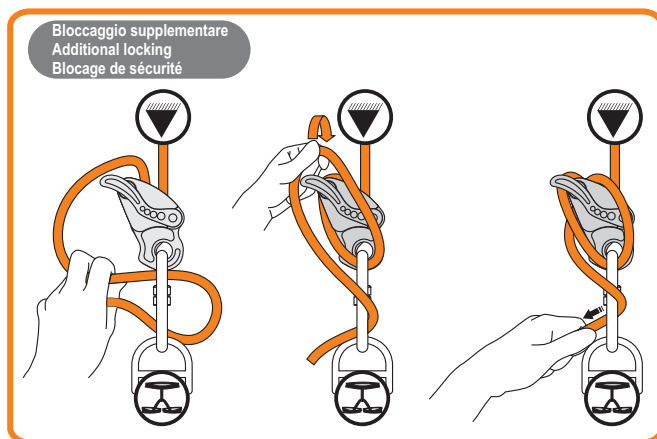
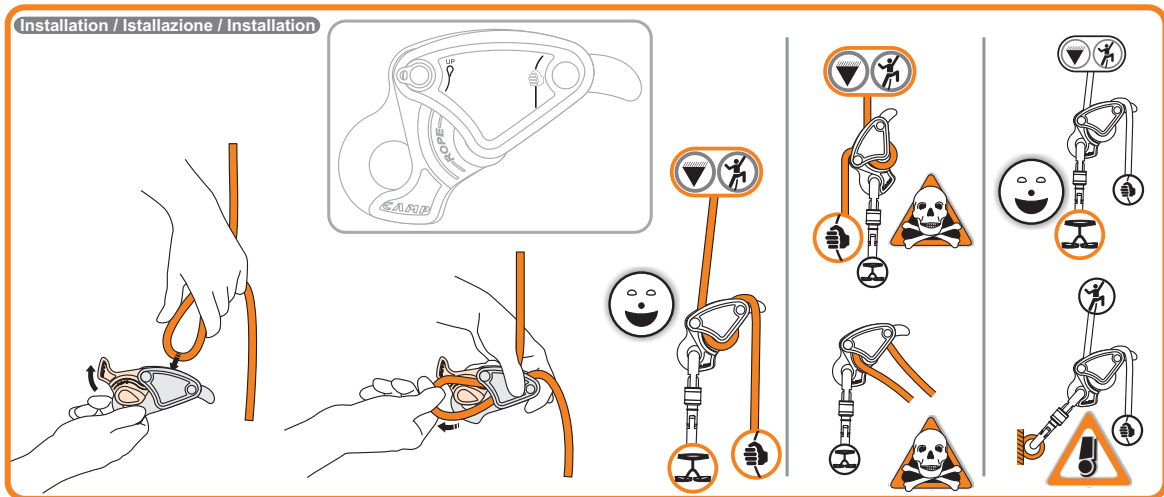
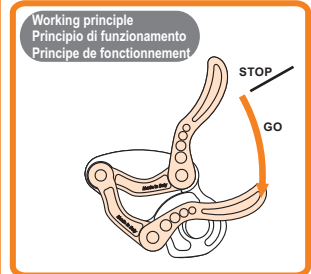
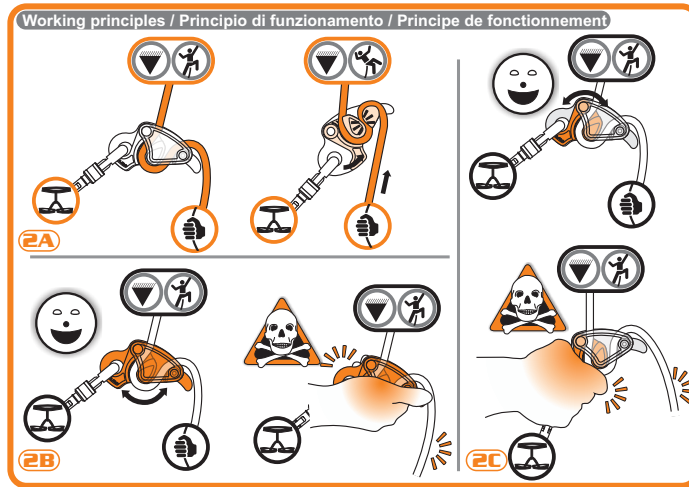
Ref.2233 DRUID PRO

Rope compatibility
Compatibilità della corda
Compatibilité de la corde

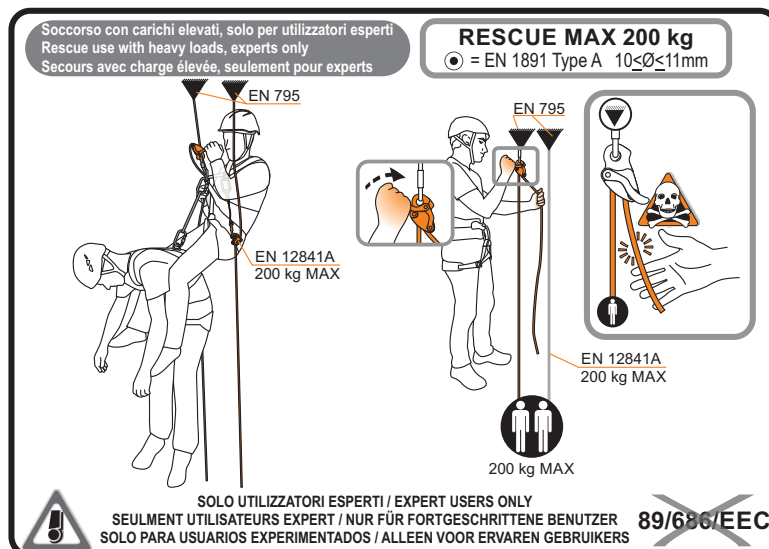
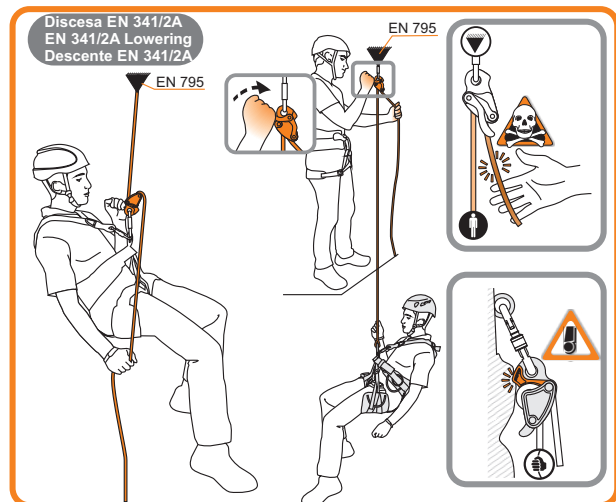
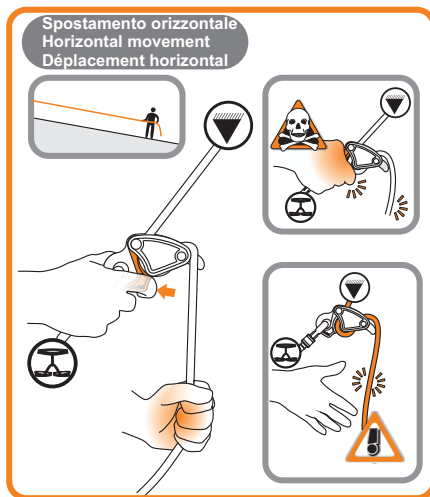
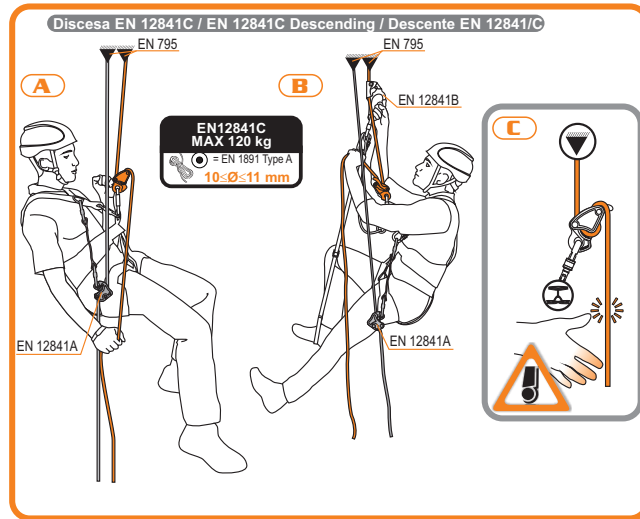
EN 12841C
● = EN 1891 Type A 10 ≤ Ø ≤ 11mm

EN 341/2A
● = EN 1891 Type A Ø 11mm

EN 15151-1
① = EN 892 Single 9.9 ≤ Ø ≤ 11mm



Ref.2233 DRUID PRO



Ref.2233 **DRUID PRO**

