

System roof clamp **SYST** EN

SYST, the robust post for the system roof from INNOTECH has a high intrinsic stability and is extremely versatile on a wide variety of system roofs. The ability to configure the fastening clamps means that all clamping widths of the different system roofs can be covered, therefore providing maximum flexibility for the user. Flexibility is the key even regarding time, because a

pre-assembled delivery brings additional time savings and considerably reduces the installation time.

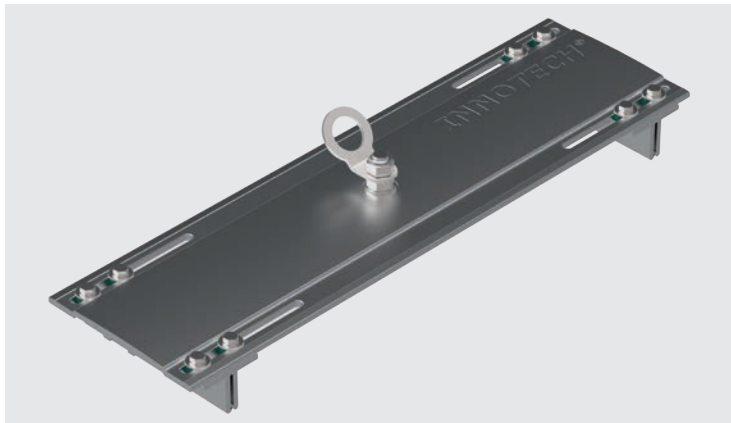
The assembly of the SYST-post is carried out without penetrating the surface, thus preventing moisture entering the interior of the roof.

- EAP-SYST: single anchor point for 3 people, with rotating anchorage eye
- AIO-SYST: anchorage point or component for INNOTECH lifeline system
- suitable for standing seam and industrial metal roofs from different manufacturers, with individually adapted clamps
- by means of sliding screw placement, it is possible to adapt optimally to the profile width

- simple and quick installation because of the pre-assembled elements
- installation without penetrating roof (avoids cold bridges)
- resistant to weathering: Base plate and clamps are made from corrosion-resistant aluminium
- simple to retrofit at any time
- to the latest state of the art certification:

EN 795:1996 TYPE A and C
CEN/TS 16415:2013

SYST



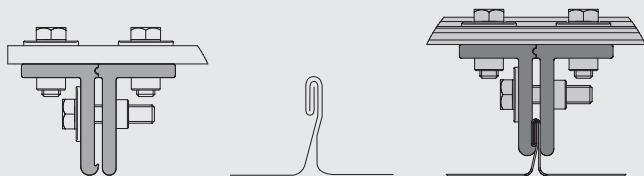
VARIANTS

SYST-01

Substructure: (double) standing seam roof systems
 Material (material thickness): steel (min. 0.5 mm), aluminium (min. 0.7 mm)
 Profile width: 410 to 610 mm
 Material: aluminium, stainless steel (AISI 304)

Pre-assembled and does not require roof penetration.

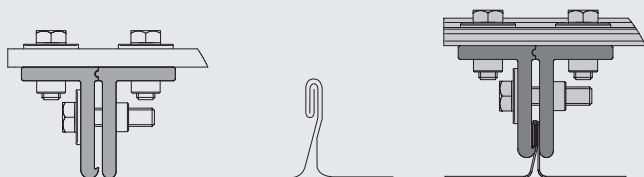
Use AIO-FALZ-45 in the INNOTECH-horizontal lifeline system.
 Use EAP-FALZ-15 or EAP-INDUSTRY-31-CU with single anchor points.



SYST-02

Substructure: PREFA standing seam roof systems
 Material (material thickness): aluminium (min. 0.7 mm)
 Profile width: 410 to 590 mm
 Material: aluminium, stainless steel (AISI 304)

pre-assembled and does not require roof penetration

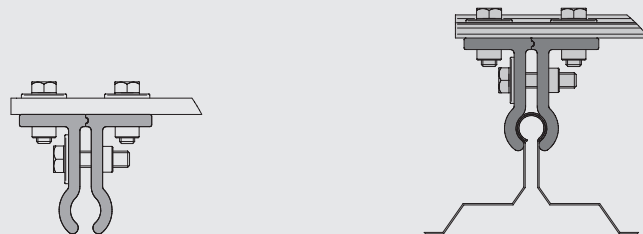


VARIANTS

SYST-04

Substructure: metal roof systems similar to INTERFALZ, KALZIP
 Material (material thickness): steel (min. 0.5 mm), aluminium (min. 0.7 mm)
 Profile width: 305 to 333 mm or 400 to 500 mm
 Material: aluminium, stainless steel (AISI 304)

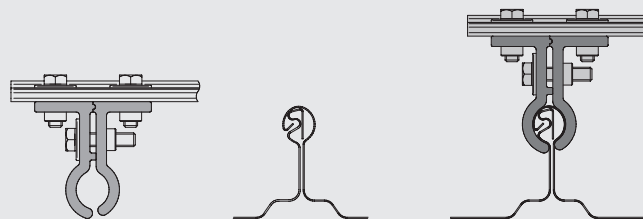
pre-assembled and does not require roof penetration



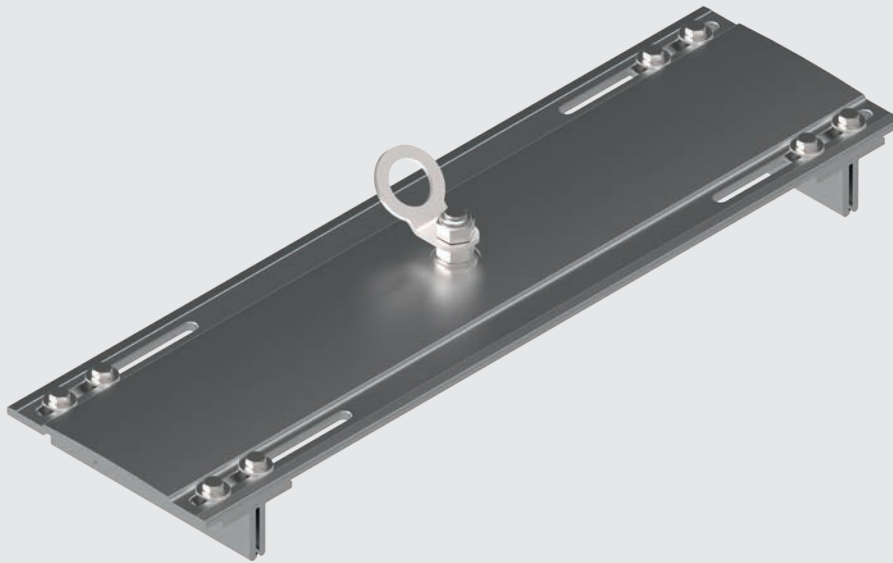
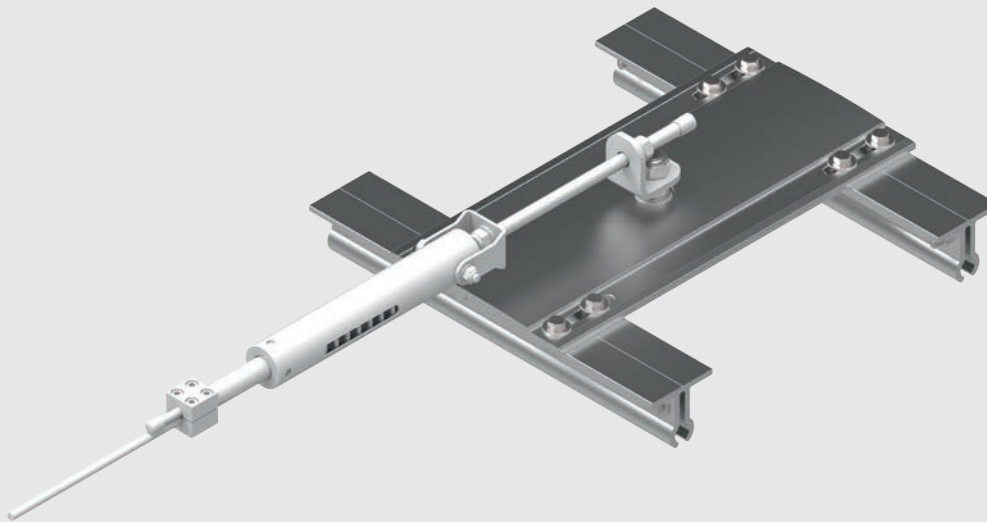
SYST-09

Substructure: ZAMBELLI RIB-ROOF EVOLUTION metal roof system
 Material (material thickness): aluminium (min. 0.7 mm)
 Profile width: 400 to 500 mm
 Material: aluminium, stainless steel (AISI 304)

pre-assembled and does not require roof penetration



The SYST from INNOTECH can be used as a end or corner post or intermediate bracket in the horizontal lifeline system.

**APPLICATIONS****SYST-01-EAP****SYST-04-AIO-ENDS****SYST-09-AIO-SZH**



SYSTEM OVERVIEW

