









## Temporary horizontal lifeline system **TEMP**

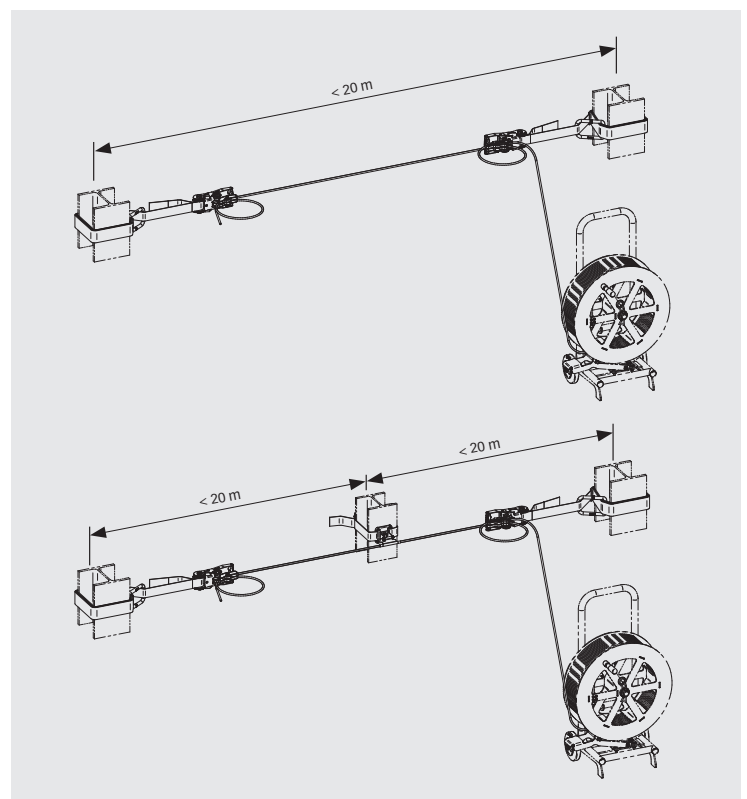


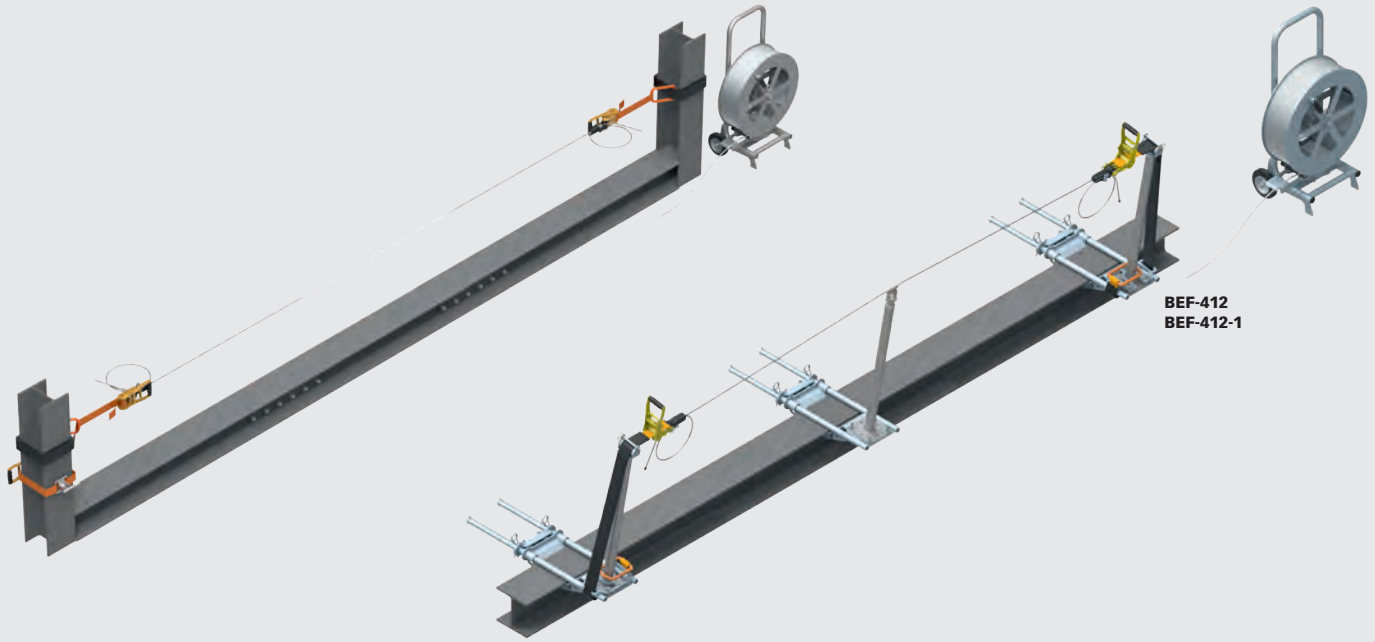
**TEMP, the temporary horizontal lifeline system by INNOTECH, is very simple and quick to install and remove. It is therefore especially suitable for short-term installation requirements on building sites or on industrial construction sites having very varied support structures (steel, façade, warehouse and bridge construction, etc.).**

**A practical lashing belt ratchet and a braked cable drum with up to 150 m stainless steel cable provide the maximum possible flexibility for temporary use.**

-  mobile lifeline system
-  ideal for steel, façade, warehouse and bridge construction
-  adapts itself individually to very varied fastening options (round columns, steel construction, INNOTECH® anchorage points)
-  simple and quick installation and removal
-  braked cable drum with up to 150 m stainless steel cable
-  end lock with integrated shock absorber
-  up to 20 m separation between cables can be achieved!
-  certification to the latest state of the art:

EN 795:2012 TYPE B and C  
 CEN/TS 16415:2013





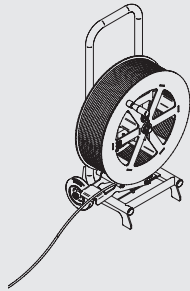
BEF-412  
BEF-412-1

**CABLE STAINLESS STEEL CABLE**

**TEMP-HASPEL-10  
MOBILE CABLE DRUM**

Material: stainless steel AISI 316, galvanised steel  
braked cable drum for the practical paying out and winding in of the stainless steel cable (AIO-SEIL-30)

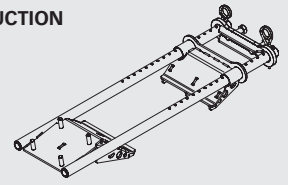
TEMP-HASPEL-10-150 including 150 m stainless steel cable, weight: approx. 85 kg



**BEF FASTENING**

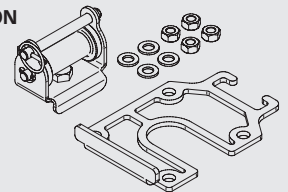
**BEF-412  
CLAMPING CONSOLE STEEL CONSTRUCTION**

Material: galvanised steel  
Flange thickness: 10 to 40 mm  
Width of steel girder: 125 to 415 mm



**BEF-412-1  
RETURN PULLEY STEEL CONSTRUCTION**

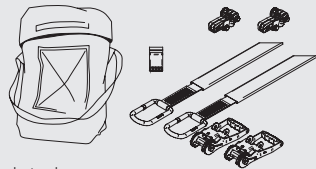
Material: galvanised steel  
For the creation of an end point in a temporary lifeline system (TEMP-ENDS-10)



**ENDS END LOCK**

**TEMP-ENDS-10  
TEMPORARY END LOCK SET  
with integrated shock absorber (EN 795 B-C)**

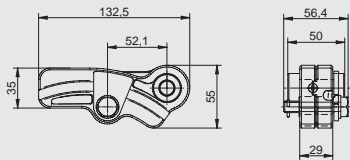
Substructure: Steel or concrete support  
Application: Steel, façade and bridge construction  
Belt length: 4 m  
Material: Aluminium (anodised), plastic, galvanised steel



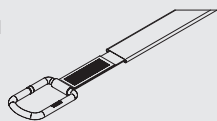
Complete set for one cable span (packing unit = 2 items)

Can be quickly attached and removed at any point of the stainless steel cable (AIO-SEIL-30) – attachment by means of lashing strap on steel or concrete support

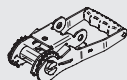
- **End lock ENDS-10**  
Aluminium, anodised, stainless steel A2, galvanised



- **Polyester harness strap**  
50 x 4,000 mm with powder-coated steel end fitting and protective polyester sleeve with smooth PVC coating  
Ø 35 x 2,000 mm



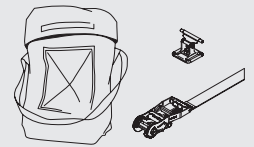
- **Ratchet**  
50 mm, 18 teeth, 5,000 daN; made from galvanised steel, with plastic handle



**BEF INTERMEDIATE BRACKET**

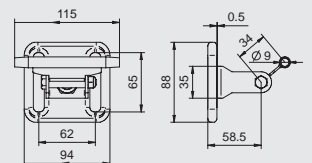
**TEMP-SZH-10  
TEMPORARY INTERMEDIATE  
CABLE BRACKET (EN 795 B-C)**

Substructure: Steel or concrete support  
Application: Steel, façade and bridge construction  
Belt length: 2.5 m  
Material: Aluminium (anodised), plastic, galvanised steel



Attached using a tension strap on steel or concrete support (packing unit = 1 item)

- **Intermediate bracket SZH-10**  
Stainless steel A2 and nickelled steel



- **Polyester harness strap**  
50 x 2,500 mm  
**with sewn-in ratchet**  
50 mm, 18 teeth, 5,000 daN  
made from galvanised steel, with plastic handle

