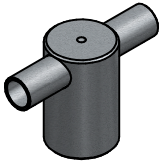


1x

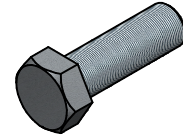


1x



M16x50
DIN913

1x



M16x50
DIN933

[mm]

1x

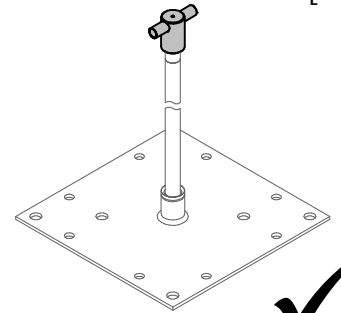
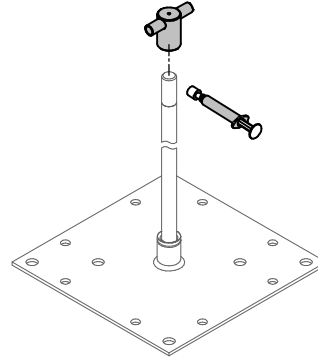
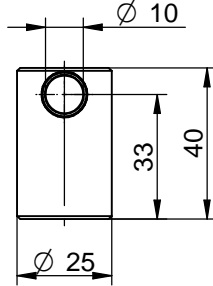
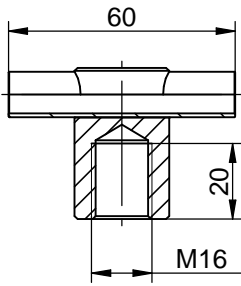


1x



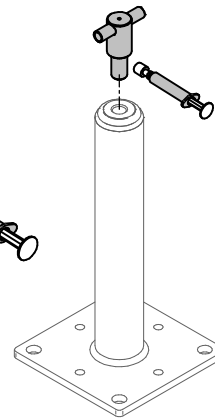
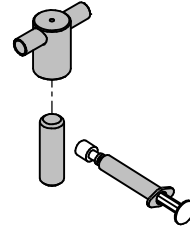
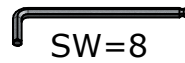
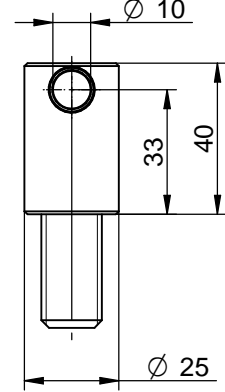
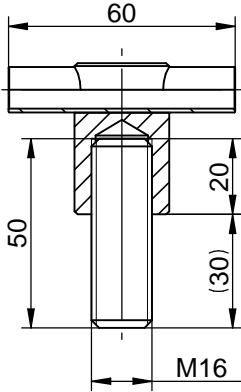
M16
DIN934

V1.) QUAD, BKS, STX



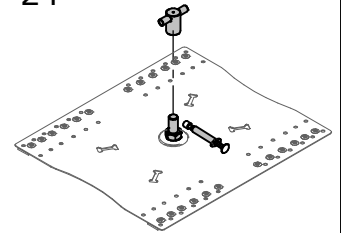
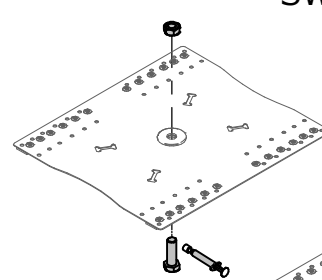
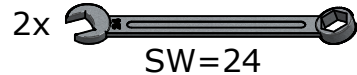
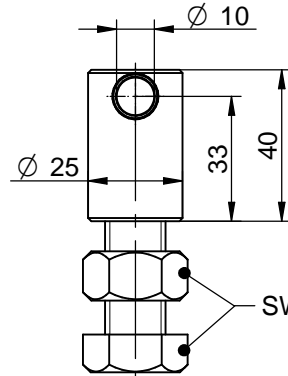
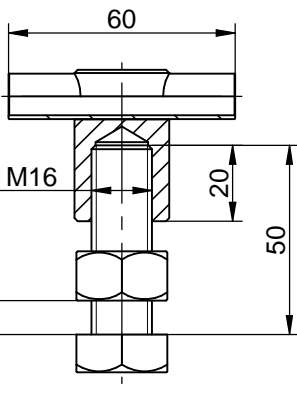
[mm]

V2.) STA



[mm]

V3.) FALZ, SAND,VARIO, SYST



[mm]

| | | | | | | |
|--|--|--|--|--|--------------------|--|
| | | | | Datum | Name | Projekt / Benennung |
| | | | | Bearb. | 20.09.2017 Leeb R. | Montageanleitung AIO-SZH-13 |
| | | | | Gepr. | 28.09.2017 Leeb R. | |
| | | | | Norm | | |
| | | | | Status | Freigegeben | |
| | | | | INNOTECH Arbeitsschutz GmbH A-4656 Kirchham, Laizing 10 www.innotech.at +43 (0) 7619 / 22122 | | Zeichnungsnummer |
| | | | | | | 02-04-13-Montageanleitung |
| | | | | | | Rev. |
| | | | | | | A |
| | | | | | | Blatt |
| | | | | | | 1/1 |
| | | | | | | Format A4 |
| | | | | | | Solid Edge |