



Hitch Mount Adapter - CH1

Instruction and Installation Manual

Index.

1. Introduction	Page	3	7.2	Regulatory frameworks	
1.1 Product description			7.2.1	Technical standards	
			7.3	Websites	
2. Important notices	Page	3	8. Producer & Distributor		Page 9
2.1 Warnings			8.1	Producer	
3. Installation	Page	4	8.2	Distributor	
4.1 System installation			9. Identity Card		Page 10
4. Configurations	Page	5	9.1	Maintenance Booklet	
4.1 Assembly with extension					
4.2 Assembly without extension					
5. Warning signs	Page	8			
5.1 Labels					
6. Warranty	Page	8			
6.1 Duration					
6.2 Exclusion					
6.3 Limitations					
6.4 Liabilities					
6.5 Inspections and Maintenances					
6.6 Competent court					
7. References	Page	9			
7.1 Producer's information notes					

1. Introduction.



Product description

1.1

Congratulation for purchasing a Genesi by Somain Italia product, article CH1 (Universal Hitch adapter), used for connecting Xtirpa fall arrest devices to vehicles. This unit is part of a Fall protection system providing safe and comfortable entry into manholes.

This system is mainly designed to ease the entry and the evacuation from vertical entry (ex. sewer), to be possibly installed onto diverse types of structures but mainly towing hitch.

Using the Xtirpa system and the CH 1 universal adapter with a Fall Arrest device (SRL or winch) provides effective protection of workers and facilitates the evacuation from vertical entries.

2. Important notices.

Warnings

2.1

This product must be installed and used only by a competent person, with appropriate qualifications, trained by the manufacturer or another qualified person in accordance with the manufacturer's instructions!

Workers using this system must be familiar with all the details of installation and use!

Fall arrest devices installed on this system must have a maximum breaking force (MAF) of 613.6 KG (6kN) or less !!!!

This device CANNOT be used by untrained person!

In the event of a damage to any part of the device, please contact the manufacturer or a competent person.

Competent person MUST be trained by the manufacturer.

This device CANNOT be overloaded.

1. This product is part of an entry / exit of people in confined spaces.

The user **MUST** read, understand and follow all instructions mentioned in this manual.

The user **MUST** follow all safety regulation related to confined space entry.

The user **MUST** visually check each component and the entire system before starting using the device.

Create a suitable training, maintenance and inspection program for your team and equipment. Failure to follow these instructions may lead to severe injury or death.

2. Before using visually inspect all equipment and accessories. Correct or report any problems before starting work.
3. Universal adapter CH 1 is designed as a component of a fall-arrest device in compliance with EN 795:2012 type B.
4. For minimum weight requirements, please refer to the chart inside this user manual.
5. The Maximum load is always 164 kg.
6. This device is man-rated and can be used for material handling. Any modification on the device cannot be done without a written approval from the manufacturer.
7. This device can be used only for fall arrest purposes accordingly to operation manual.
8. To complete the fall arrest device, you must read and understand this operation manual.
9. This device must be taken out of service if:
 - a) If the user doubts about its normal conditions for a safe use.
 - b) The device was used to arrest a fall. In such case, the use is possible only after written confirmation by a qualified individual.
 - c) The surface or structure must be capable of supporting a minimum vertical load of 1633 Kg.
10. The life limit of the device is defined only by annual inspections result.
11. Operation manual shall be provided in specific language of the country where the device is being sold to.
12. The operator **MUST** create and use an evacuation plan with all emergency aspects included.
13. The operator should use right protective case against any damage during transportation.
14. The safety inspection must be performed, at least, once a year. The date of recent inspection and the date of next inspection should be clearly noted.

3. Installation

System installation: 3.1

Step.1 Push the car hitch ball into the CH1 adapter. Install securing pin or bolt Gr.5 minimum



Step.3 Tighten adjustable knob



Step.2 Lock assembly by securing pin installation.



Step.4 Make sure that installation is fine



4. Configurations.

Assembly with extension

4.1



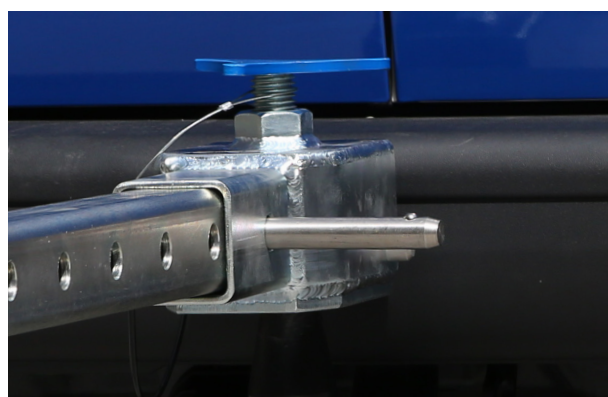
Step.1 Grab the A2126-09 extension



Step.2 Insert CH1 adapter into the last hole (n°20) of the A2126-09 extension.



Step.3 Secure it by the pin on the CH1



Step.4 Insert the A2126-09 extension into the IN-2126 or IN-2204 T-Base



Step.5 Adjust the height of the IN-2126 or IN-2204 T-Base to allow the A2126-09 extension to be perfectly leveled.



Step.6 Adjust the T-Base feet using the two threaded rods to complete the leveling of the system.



Step.7 Verify the correct leveling with the bubble in the caster-eye kit included



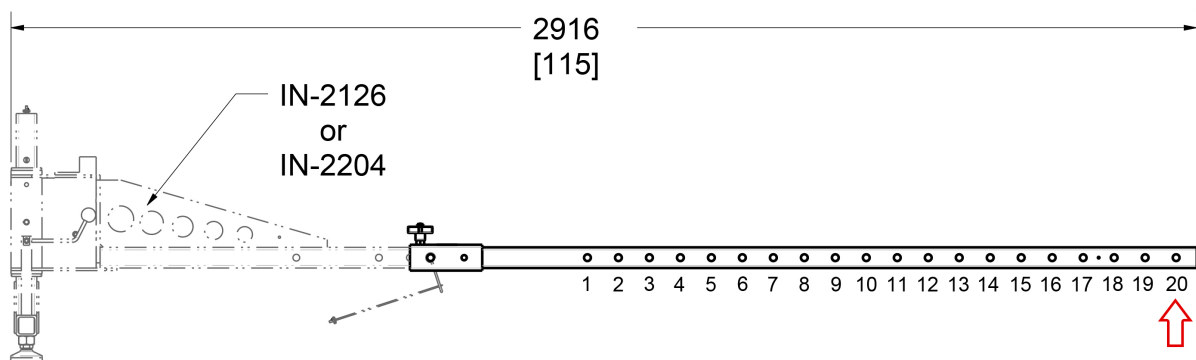
Step.8 Proceed to the tow ball and follow the instructions above (Chapter 3)



IMPORTANT NOTICE

Be sure to follow the weight requirements indicated in the chart below.

Position	Weight Req (lb)	Weight Req (Kg)
20	1760	800



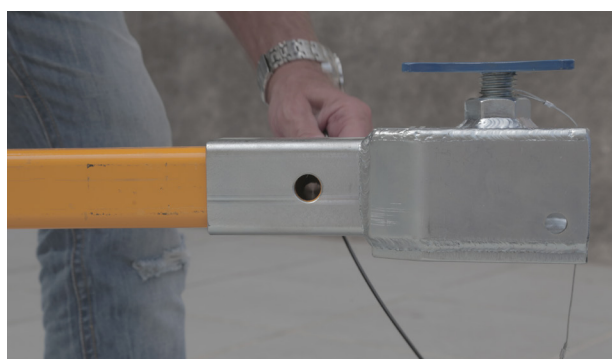
Assembly without extension

4.2

Step.1 Insert the CH1 adapter on the IN-2126 or IN-2204.



Step.2 Align the furthest hole of the IN-2126 or IN-2204 with the hole on the CH1



Step.3 Secure it by the biggest pin on the CH1 adapter

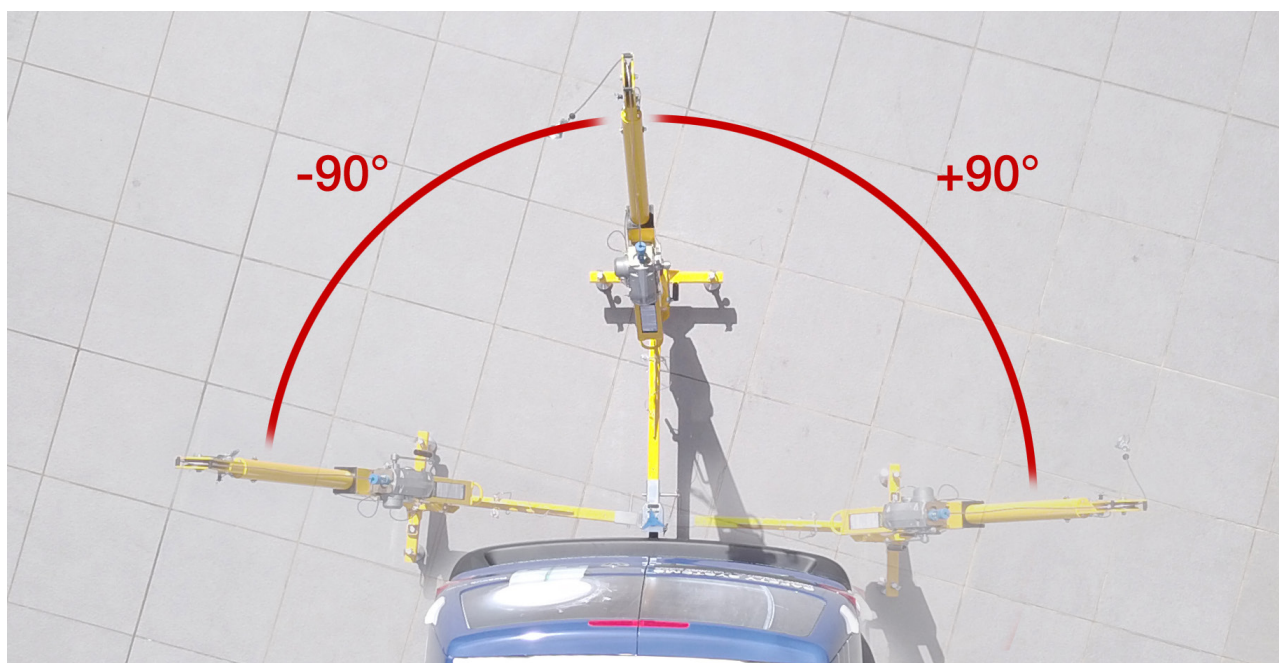


Step.4 Proceed to the tow ball and follow the instructions above (Chapter 3)



IMPORTANT NOTICE

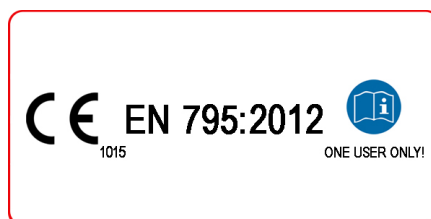
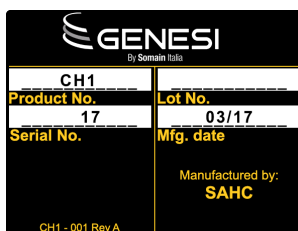
The system can be used up to a 90° angle.



5. Warning signs.

Labels

5.1



1015 = SZU (Strojírenský zkušební ústav, s.p., Hudcova 424/56b, Brno, CZ

Always follow CH1 adapter installation manual. The Davit MUST be used in a perpendicular position!!!

6. Warranty.

Duration

6.1

Warranty is given for 2 years, starting from the date of delivery, on all plastic and aluminium parts of the CH1.

Exclusion

6.2

The warranty will only be provided if:

- the product has been installed and used in compliance with the assembly and technical instructions supplied by Genesi Italia;

The warranty will not be provided if:

- our safety products include parts or accessories of out-sourced origin. In this case, the warranty provided will be that of the supplier of such parts.

The warranty lose effectiveness when defects are caused by:

- interventions or modifications to the original system performed without written authorization from the manufacturer/dealer;
- abnormal use differing from the purpose for which the equipment is intended;
- defective installation that fails to conform to the drawings or has not been performed in a workmanlike manner;
- failure of the customer to notify special conditions (pollution, temperature, number of users, etc.) of use of the equipment;
- breakage of the supporting surface that houses the anchor device;
- parts produced by the purchaser or obtained from

sources other than Genesi Italia added to our systems.

- by unforeseen circumstances(force majeure) or by any event beyond the seller's control, such as warfare, lightning, etc.

Limitations

6.3

In all cases, our warranty merely covers the replacement or repair of parts or equipment formally recognized by our technical service as being defective.

If the repairs are entrusted to third parties, they may only be performed after acceptance by Genesi Italia of the cost estimate for the repairs themselves.

Equipment may only be returned after authorization from Genesi Italia.

The warranty only applies to returned items and does not cover the cost of removing or re-installing the equipment from/into the system in which it is built.

Repairs, replacements or modifications to parts or equipment during the warranty period may extend the warranty itself.

Liability

6.4

Genesi Italia shall be liable, under ordinary-law terms, for material damage caused by its equipment or by its personnel.

Repairs of material damage attributable to the seller are expressly limited to a sum that will not exceed the value of the equipment involved, subject of the order.

The seller and the customer expressly agree to reciprocally

refrain from requesting compensation for indirect and nonmaterial damages of any nature, such as loss of business, loss of earnings, delay expenses, reminder fees, removal and re-installation of equipment, loss of future contracts, etc.

Inspection and maintenance 6.5

As far as possible, before each use it is necessary to visually inspect the hitch adapter CH1. When in doubt, request an inspection by the installing company or a member of maintenance personnel that is qualified to perform this operation.

The inspection must be performed by qualified personnel, authorised by Genesi Italia.

In case of a fall, the system must undergo mandatory maintenance by competent and authorised personnel, other than the system's users.

Competent court 6.6

The court of Bergamo, Italy shall have exclusive jurisdiction over any disputes relating to the terms and conditions mentioned above.

7. References.

Producer information notes 7.1

User & installation manual

EN 795:2012 Type B
Permanent anchor points.

Regulatory framework 7.2

Technical standards 7.2.1

EN ISO 14122-2:2010

Permanent means of access to machinery and working platforms, walkways.

Websites 7.3

www.genesibesafe.com
Distributor official website

www.europa.eu
European regulations

8. Producer & Distributor.

Producer 8.1

SAHC s.r.o.
Dolany 82, Pardubice
53345 - Czech Republic

Distributor 8.2

Somain Italia S.p.A.
via Donizetti, 109/111
24030 - Brembate di Sopra - Bg

9. Identity Card.

Maintenance Booklet

9.1

Model and Type of Equipment			
	Ref. Number		
Serial Number		Date of Manuf.	
User Name			
		Date of putting into operation	
Date of Purchase			

Periodic Examination and Repair Histoy					
	Date	REASON FOR ENTRY PERIODIC EXAMINATION OR REPAIR	DEFECTS NOTED REPAIRS CARRIED OUT AND OTHER RELEVANT INFORMATIONS	NAME AND SIGNATURE OF COMPETENT PERSON	PERIODIC EXAMINATION NEXT DUE DATE
1					
2					
3					
4					

EC type examination carried out by **Szù s.p., Tovarni 5, CZ- 466 21, Jablonec Nad Nisou**



Genesi is a brand of:

Somain Italia s.r.l.

Via Donizetti, 109/111
24030 Brembate di Sopra
Bergamo - Italy

T. +39 035 620380 / F. +39 035 6220438
info@genesibesafe.com



genesibesafe.com

Genesi, Be Safe