

# XTIRPA™

**INSTRUCTION AND SAFETY MANUAL**  
**XTIRPA 1524mm-2439mm (60" to 96") Extendable Fall**  
**Protection & Retrieval Davit Arm System for PPE**

**UNIVERSAL RESCUE SYSTEM**  
**IN-8006**

TO BE READ AND UNDERSTOOD BY USER PRIOR TO EACH USE



**Innova**  
Produits de Services Publics - Public Utility Products inc.

INNOVA Public Utility Products Inc.  
1040 Boulevard Industriel, Granby, Québec, Canada  
Tel (450) 777-1240 Fax (450) 372-9936 [www.xtirpa.com](http://www.xtirpa.com)



# INTRODUCTION

## WARNING

The XTIRPA system is part of a personal protection equipment system for fall protection, work positioning, or rescue, for use in confined spaces.

The user must read, understand and follow the manufacturer's instructions for each component or part of the complete XTIRPA system. These instructions must be provided to the user of the XTIRPA system. The user must read and understand these instructions before using the XTIRPA system. The manufacturer's instructions must be followed for proper use and maintenance of this product. Alterations or misuse of the XTIRPA system or of any component or part thereof or failure to follow instructions may result in serious injury or death, for which the manufacturer disclaims all warranties and liabilities whatsoever, user, owner and purchaser of the XTIRPA system waiving all claims, rights and recourses against the manufacturer and derived therefrom.

The XTIRPA system was designed for persons needing a personal protection equipment system for fall protection, work positioning, or rescue, for use in confined spaces. The XTIRPA system is intended to act as a support structure or anchor for these uses. Due to its design and the use of an advanced composite, the XTIRPA system is one of the lightest and most ergonomic systems of its kind on the market. The XTIRPA system meets the EN 795: 2012 Type A and TS16415: 2013 standards. Always keep this instruction and safety manual available to any worker needing to use the XTIRPA system.

**IMPORTANT:** The buyer must complete and return the limited warranty registration form.

Before each use, the user must read, understand and follow the manufacturer's instruction and safety manual. Keep instructional and safety labels affixed to the XTIRPA system and its components and parts clean and legible at all times. Clean or replace if required. New labels can be obtained upon demand.

Establish a regular training program on the XTIRPA system for new & experienced workers, as further recommended in this instruction and safety manual. Establish a detailed inspection program for the XTIRPA system and document findings, as further recommended in this instruction and safety manual. Always inspect the XTIRPA system before each use and at least once a year.

The XTIRPA system and its components and parts have labels indicating the maximum capacity of each. Exceeding said maximum capacity may result not only in damages to the XTIRPA system or its components or parts but also in serious injury or death, for which the manufacturer disclaims all warranties and liabilities whatsoever, user, owner and purchaser of the XTIRPA system waiving all claims, rights and recourses against the manufacturer derived therefrom.

The XTIRPA Universal Safety system, IN-8006, including the components IN-2199 or IN-2414 Mast for fall protection and retrieval, IN-2201 adapter and IN-2197 Extendable davit arm for fall protection and retrieval, MU8006-012 ENG rev04.

APAVE SUDEUROPE SAS (Headquarters: 8 rue Jean-Jacques Vernazza—Z.A.C. Saumaty-Séon - CS 60193 - 13322 MARSEILLE CEDEX 16) is the notified body involved in the initial production and certification control phase.

# DESCRIPTION & INTERPRETATION OF MARKING SYMBOLS



This symbol is used to alert the user to a potential hazard. The safety of the worker is in jeopardy. It is imperative to follow the manufacturer's recommendations.



This symbol asks the user to read and understand the manual for this product before use.



This symbol specifies that the system can be used simultaneously by up to 3 users.



Anchorage hardware must be qualified and experienced personnel. The installer must follow the anchorage hardware manufacturers recommendations at all times.



Periodic inspections of hardware must be done. In the occurrence of a fall or the safety of the equipment is in doubt, equipment must be immediately removed from service and inspected by qualified personnel before reuse.



Maximum permissible arresting force (MAF) .



The positioning pins must always be in place when manoeuvring personnel. Otherwise, serious injuries may occur.



Adaptors are designed to function only with the XTIRPA equipment or approved by the manufacturer.

## -1- APPLICATION

The XTIRPA system, and its many components and parts (including davit arm, manhole guard, movable adapter, permanent adapter, integrated mast and side entry cart), are intended to be used as part of a personal protection equipment system for fall protection, work positioning, personnel handling, materials handling, or rescue, for use in confined spaces. The XTIRPA system is intended to act as a support structure or anchor for these uses.

## -2- RESTRICTIONS

- a) **CAPACITY:** The maximum working load of this product is 360lbs (164kg). According to EN 795: 2012 and TS16415: 2013, use an EN-360 and / or EN-363 fall arrest system or EN-1496 recovery system.
- b) The manufacturer certifies that the anchoring devices have been tested in accordance with this European Standard (EN 795: 2012 Type A and TS16415: 2013) and that, unless otherwise specified, they are suitable for use by one person, by anchorage point, with energy absorber according to EN 355.
- c) **PRECAUTIONS:** Take the necessary precautions to limit injuries to the user and risks of damaging the XTIRPA system.
- d) Use of the XTIRPA system in areas where environmental hazards exist may require additional precautions to limit the possibility of injury to the user or damage to the XTIRPA system. Hazards may include, but are not limited to: high heat, fire, flame, smoke, fumes, caustic chemicals, corrosive environments, high voltage power lines, sudden changes of pressure, explosive or toxic gases or substances, water or risks of flooding, risks of wall, ceiling or floor collapsing, moving machinery and sharp edges.
- e) Install and secure all signaling and other precautionary and security measures, including but not limited to, notifying users, bystanders and vehicle operators circulating near the XTIRPA system of the presence of the XTIRPA system and its workers, before starting work.
- f) Wear all appropriate certified and recommended security equipment such as, but not limited to, hard hat, protective eyewear, leather gloves, protective clothing, work boots, harness in accordance with EN 361, flashlight and respiratory device if needed.

**WARNING:** Equipment shall not be used past its capacity, or in any other applications for which the equipment was not designed.

**WARNING:** The equipment should only be used by trained and competent persons to ensure safe use of this product.

- g) Always work in teams of at least two (2) people: 1 attendant and 1 confined space worker (the person attached to the lifeline cable or rope). These people must be qualified and trained on the XTIRPA system. They must have read and understood this instruction and safety manual before using the XTIRPA system. One person works in the confined space (the user attached to the lifeline cable or rope) and the other (attendant) pays out the line and reels it in, keeps in contact with the person inside and remains available in case of any emergency. The attendant makes sure, at all times, that the user who is tying his lifeline cable or rope to his EN 361-compliant harness is in the right position. The attendant also assures that the XTIRPA system is well in place and that no load imbalance is possible.
- h) Use only a certified EN 361-compliant full body harness and lifeline cables and ropes for any user of the XTIRPA system, with appropriate specifications designed and recommended for use in specialized work conditions such as those for which the XTIRPA system is intended to be used as per this instruction and safety manual. For the installation of lifeline cables and ropes on the certified 14kN anchor points of the davit arm, see section 6.

**WARNING:** During installation of the system it is important to ensure stability throughout.

- i) Plan your work program before starting. Have the required equipment, procedures and people, which must be qualified and trained on the XTIRPA system and who must have read and understood this Instruction and safety manual before using the XTIRPA system, available to do the job.
- j) Keep all instructional and safety labels affixed on the XTIRPA system and its components and parts clean and legible at all times. Clean or replace if required. New labels can be obtained upon demand.

**IMPORTANT:** If the markings on the anchoring device are not legible after installation, it is recommended that supplementary markings next to the anchoring device be made.

**WARNING:** No modifications or additions to the equipment shall be performed without the authorization of the manufacturer, and all repairs shall be done as indicated by the operating procedure of the manufacturer.

**WARNING:** It is established and agreed that the equipment (system) is reserved for the use of three persons maximum.

- k) Do not exceed 360 lbs (164 kg) per anchor, the maximum workload (CMT) of the system.
- l) Follow all applicable laws, regulations and standards for work in, entry in and exit from confined spaces.
- m) A person who has not read this instruction and safety manual, has not been trained in using the XTIRPA system and does not understand all operation, safety, maintenance, servicing and storage instructions contained in this instruction and safety manual and in any other recommendations provided by the manufacturer or its certified trainers is not qualified to operate the XTIRPA system and does it at their sole risk, therefore waiving any and all claims, rights and recourses against the manufacturer and derived therefrom.
- n) Make sure to conform to relative demands regarding anchoring devices (E.g.: floor adapter, wall adapter, built-in, etc.) or ensure that the chosen structure that will be used has an anchoring point, and keep in mind minimal required resistance, equivalency and position.

**WARNING:** Anchoring devices must be installed only by competent persons or organizations.

- o) The maximum force applied by the system on the structure is a vertical force of 14kN according to EN362, EN795: 2012 CE and TS16415: 2013 on the anchorage to which the system is hooked.

**WARNING:** The system must be appropriately checked, for example, by calculations or tests.

**WARNING:** The use of a base, structural anchor or fastener, if one exists, must be taken into account when calculating the amount of force supported by the anchor during strength and integrity testing.

- p) A rescue plan shall be put in place in order to account for all likely emergencies that could occur while working.

**WARNING:** Any modification or addition to the equipment cannot be done without the prior written consent of the manufacturer, and any repairs must be undertaken in accordance with the manufacturer's procedures.

**WARNING:** This equipment (system) is reserved for the use of one person at a time.

**WARNING:** It is important to place the XTIRPA system on a hard and level surface. Do not use the XTIRPA system on a soft surface, including, but not limited to, sand, grass, gravel and rocks. If you have any questions about use or maintenance or whether the XTIRPA system is appropriate for your job, please contact the manufacturer PSP INNOVA INC.

**WARNING:** For safety reasons, make sure when using the anti-drop system that you have enough space under the user, so as to avoid injury. If a fall occurs, there should be enough space to avoid a collision with the ground or any obstacle. See the diagram in Section 8 for calculating this distance.

## XTIRPA SYSTEM REQUIREMENTS

**IMPORTANT:** If you have questions on the use, care or suitability of the XTIRPA system for your application, please contact the manufacturer INNOVA Public Utility Products Inc.

**IMPORTANT:** Record the product identification information from the ID label in the maintenance and inspection log of this Instruction and safety manual.

**IMPORTANT:** Record purchasing date and also date of first use on the maintenance and inspection log sheet included in this safety instruction manual.

**IMPORTANT:** If a material/positioning winch is required, this option will be available to you, by using the second mounting bracket conceived for this application. Follow installation instruction of this present manual and repeat steps 4-5-6 on installation of material/positioning winch. If you have any questions concerning the use, maintenance or appropriate characteristics of the XTIRPA for your application, please contact the manufacturer INNOVA Public Utility Products Inc.

**WARNING:** When positioning the cable or lifeline or winch, the alignment system, retaining system and wheel must all be located on the same side.

**WARNING:** This system should never be used to transport personas and material at the same time.

- a) The XTIRPA system is intended to be used as part of a personal fall arrest, work positioning, personnel riding, material handling, or rescue system for use in confined spaces and act as a support structure or anchorage. The XTIRPA system must be used only with adapters, anchors, connectors, other components, parts or subsystems certified, approved and recommended by the manufacturer.
- b) Substitutions or replacements made with non-approved adapters, anchors, connectors, other components, parts or subsystems may be incompatible, may jeopardize the safety and reliability of the complete XTIRPA system and may result in serious injury or death, for which the manufacturer disclaims all warranties and liabilities whatsoever, user, owner and purchaser of the XTIRPA system waiving all claims, rights and recourses against the manufacturer derived therefrom.
- c) Connectors (EN 362) (hooks, carabiners, D-rings) must comply with EN362.
- d) Make sure the lifeline cable or rope is positioned directly over the work area. Use only certified lifeline cable or rope, in perfect working condition, with appropriate specifications, including maximum leverage capabilities, for the intended use of the XTIRPA system.



- e) Owners must make sure that, before each use, all users of the XTIRPA system have read, understood and follow manufacturer's Instructions and safety manual.
- f) Owners must also make sure that all users have successfully been trained in using the XTIRPA system, before allowing them to use the XTIRPA system, and at least annually thereafter.
- g) A person who has not read the Instruction and safety manual, been trained in using the XTIRPA system and does not understand all operation and safety instructions, is not qualified to operate the XTIRPA system. An untrained user exposes himself and others to possible serious injury or death, for which manufacturer disclaims all warranties and liabilities whatsoever, user, owner and purchaser of the XTIRPA system waiving all claims, rights and recourses against manufacturer derived there from.
- h) Refer to and follow all EN standards or other local standards and regulations. Comply with all requirements of your local regulations for your applications.
- i) See other important operation instruction and safety information contained hereafter in this instruction and safety manual.
- j) It is imperative to supply all information in sufficient quantity to assure that different equipment articles are compatible when assembled as a system.

**WARNING:** It is possible that a hazard may occur while using multiple components, as one of them could affect the safety function of the system, if the safety function of one component can be affected by that of another component.

**WARNING:** It is essential for the safety of the user, if the product is resold to a destination outside the first country, that the reseller supplies the instruction manual, maintenance instruction log sheet for the periodic inspections and all associated repair instructions written in the native language of the country in which the product will be used. It is also required to supply all specific additional information for the equipment.

**WARNING:** Any persons with a medical condition which could cause a hazard to the user during normal operation and in emergency situations should avoid using the system.

- k) Life expectancy of the XTIRPA system and its components will be determined based on the conclusions of periodic and monthly inspections which will determine whether or not the product may remain in service.

**WARNING:** If the system has been used to stop a fall, it should not be used again until a competent person has, in writing, authorized its reuse.

**WARNING:** The safety of the user is in direct relation to the quality of maintenance and integrity of the equipment.

- l) If possible, use a barricade to mark off and secure the work area.

## MAINTENANCE, SERVICING, STORAGE

- a) Before each use, the user must read and understand the manufacturer's Instruction and safety manual. Ensure that the markings are visible at all times.
- b) Before each use, carefully inspect the XTIRPA system and all components and parts thereof. Any defective parts or components could result in serious injury or death.
- c) The standards require a regular inspection program for all confined space entry / retrieval equipment, as well as maintaining documented results of these inspections. Use the maintenance and inspection logs included in this instruction and safety manual to document the results.
- d) It is recommended that the anchoring device be marked with the most recent or next inspection date.
- e) Remove the XTIRPA system from service if a problem or an unsafe or defective condition is found during the inspection. Return to an authorized service center or the manufacturer for service.
- f) Replacement components and parts and additional maintenance and servicing procedures must be completed by an authorized service center which has been approved by the manufacturer, or by the manufacturer itself.
- g) Establish a monthly inspection which should be done by a competent person (person who is familiar, has been trained and has read and fully understands this instruction and safety manual), other than the user.

**WARNING:** A periodic inspection must take place at least once every twelve months.

- h) Periodically clean the exterior of the davit arm and base, using water and mild detergent. Clean labels as required.
- i) When lowering the removable system, it is important to slowly place the system on the ground, to avoid damaging components.
- j) Store the XTIRPA system in a clean and dry environment, out of direct sunlight. Avoid areas with chemical or toxic vapors, substances or environments. Do not immerse or leave in direct contact with water, as corrosion and rust may occur. Inspect the XTIRPA system after any period of extended storage and at least once a month.
- k) The XTIRPA system and its components was designed for 10 years of continuous service. The life expectancy of the XTIRPA system and its components will be determined after periodic and monthly inspections that will determine whether or not the product may remain in service.
- l) All components and parts of the XTIRPA system should be stored in separate bags to facilitate transport and handling.

# WARRANTY

The XTIRPA system offered by the manufacturer, INNOVA Public Utility Products Inc., is warranted against manufacturing defects in workmanship and materials for a period of two (2) years from the date of shipment of the product, which warranty only covers the original purchaser of the XTIRPA system. The manufacturer will promptly repair or replace all components or parts found to be defective, the manufacturer reserving the right to elect to have any alleged defective part returned to its plant for inspection before making a repair or replacement.

Only components or parts found to be defective by the manufacturer, at its sole discretion and upon any inspection requested and performed by the manufacturer, will either be repaired or replaced by the manufacturer, at its sole choice.

All claims must be forwarded in writing to the manufacturer, immediately upon discovery by owner, and must be accompanied by a copy of the proof of purchase of the original purchaser. The manufacturer will issue a claim's number and give specific instructions to be followed as to claim's procedures and return of the defective part, if so requested by the manufacturer. Owner will collaborate with manufacturer and its representatives to allow inspection of any alleged defective part. All shipping costs to return defective components and parts to the manufacturer's plant are payable by owner, the cost of reshipping replacement components or parts being covered by the manufacturer.

This warranty does not cover equipment damages resulting from any other cause than a manufacturing defect in workmanship or materials, including, without limitation, damages resulting from abuse, lack of maintenance, improper handling or storage, voluntary damages, vandalism, accidental damages or damages resulting from impact or collision, damage in transit, damages caused by fire, explosion, chemical, toxic or corrosive vapors, substances or environments, water, normal corrosion and rust, storms, hail, and other acts of God, war, insurrection, acts of terrorism or other damage beyond the control of the manufacturer. This warranty applies only to the original purchaser and is the only one applicable to the XTIRPA system, and is in lieu of all other warranties, expressed or implied. Without limiting the generality of the foregoing, the manufacturer will not be liable nor responsible for any other cost, damages or claims whatsoever, including for any special, incidental, indirect, or consequential damages whatsoever such as, but not limited to, damages for loss of profits or expected revenues, for business interruption, for personal injury, for failure to meet any duty including of good faith or of reasonable care, for negligence, and for any other pecuniary or other loss whatsoever, arising out of or in any way related to the use of or inability to use the XTIRPA system, even in the event of the fault, tort (including negligence), strict liability, breach of contract or breach of warranty, even if the manufacturer has been advised of the possibility of such damages. The manufacturer hereby disclaims all other warranties and conditions, either express, implied or statutory, including, but not limited to, any implied warranties or conditions of merchantability, of fitness for a particular purpose or application, and of lack of negligence or lack of workmanlike effort.

**IMPORTANT:** The buyer must fill out and return the Limited Warranty registration form for each product.

# XTIRPA SYSTEM DESCRIPTION

## WARNING

The XTIRPA system is part of a personal fall arrest, work positioning, personnel handling, material handling or rescue system for use in confined spaces. The XTIRPA system is intended to act as a support structure or anchor for these uses. The user must read, understand and follow the manufacturer's instructions for each component or part of the complete XTIRPA system. These instructions must be provided to the user of the XTIRPA system. The user must read and understand these instructions before using the XTIRPA system. The manufacturer's instructions must be followed for proper use and maintenance of the XTIRPA system. Alterations or misuse of the XTIRPA system or failure to follow instructions may result in serious injury or death, for which the manufacturer disclaims all warranties and liabilities whatsoever, user, owner and purchaser of the XTIRPA system waiving all claims, rights and recourses against the manufacturer and derived therefrom.

## DESCRIPTIONS

- EXTENDABLE DAVIT ARM 1524MM-2438MM (60"-96"): IN-2197 (see illustration 1)
- 140MM (5.5") MAST FOR EXTENDABLE DAVIT ARM IN-2197: IN-2199 (see illustration 2)
- 140MM(5.5")MAST FOR 54" EXTENDABLE DAVIT ARM IN-2197: IN-2414 (see illustration 3)
- 140MM(5.5") CENTRAL FLOOR ADAPTER (INOX 304) : IN-2201 (see illustration 4)
- 140MM (5.5") WALL ADAPTER (INOX 304) : IN-2420 (see illustration 5)
- MAST 5-1/2" DE 24" FOR DAVIT 96": IN-2470 (see illustration 6)
- TYPICAL SET: IN-8006 (see illustration 7)

Illustration 1: IN-2197



Illustration 4: IN-2201

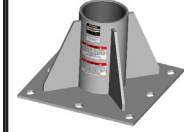


Illustration 7: IN-8006



Illustration 2: IN-2199



Illustration 5: IN-2420



Illustration 3: IN-2414



Illustration 6: IN-2470



# OPERATION, ASSEMBLY AND USE XTIR-PA SYSTEM

**WARNING:** The XTIRPA system is part of a personal fall arrest, work positioning, personnel handling, material handling or rescue system for use in confined spaces. The XTIRPA system is intended to act as a support structure or anchor for these uses. The user must read, understand and follow the manufacturer's instructions for each component or part of the complete XTIRPA system.

**WARNING:** These instructions must be provided to the user of the XTIRPA system. The user must read and understand these instructions before using the XTIRPA system. The manufacturer's instructions must be followed for proper use and maintenance of the XTIRPA system. Alterations or misuse of the XTIRPA system or failure to follow instructions may result in serious injury or death, for which the manufacturer disclaims all warranties and liabilities whatsoever, user, owner and purchaser of the XTIRPA system waiving all claims, rights and recourses against the manufacturer and derived therefrom.

**IMPORTANT :** If you have questions on the use, care or suitability of the XTIRPA system for your application, please contact the manufacturer INNOVA Public Utility Products Inc.

**IMPORTANT :** Record the product identification information from the ID label in the maintenance and inspection log of this Instruction and safety manual.

## OPERATION AND INSTALLATION OF DAVIT ARM AND MAST SYSTEM

1. Remove all components and parts from bags, boxes, or shipping container and set all on ground. Make sure that components are in good working condition.

2. Insert mast into a certified approved and recommended anchoring adapter.



3. Install the receptacle of the davit arm on the mast.



- 4.** Install the lifeline cable or rope or winch on mounting bracket made to accept the hoisting device and safely lock with pin attached to the SRL or winch bracket.



- 5.** A second lifeline or winch can be installed on the jib. Install the lifeline or additional winch on the support of the jib designed to receive this type of equipment. Use the locking pin supplied with the lifeline or winch support and lock everything with the latter.



- 6.** A second lifeline can be installed on the gray "D" anchor point.



- 7.** At mid section of the davit arm there is an alignment system. Remove the retaining pin.



- 8.** Open horizontal roller door, pass the lifeline cable or rope into the alignment and lock using retaining pin.



- 9.** Make sure that the lifeline cable or rope is safely in place.



- 10.** At the top of davit arm there are two sheaves side by side. Run cable or rope through the retaining mechanism and set cable or rope in appropriate sheave.



- 11.** The cable or rope shall be set on the same side as the chosen alignment below.



**IMPORTANT:** When positioning the cable or lifeline or winch, the alignment system, retain-ing system and sheave must all be on the same side.

**IMPORTANT:** If a material/positioning winch is required, this option will be available to you, by using the second mounting bracket conceived for this application. Follow installation instruction of this present manual and repeat steps 4-5-6 on installation of material/posi-tioning winch. If you have any questions concerning the use, maintenance or appropriate characteristics of the XTIRPA for your application, please contact the manufacturer INNO-VA Public Utility Products Inc.

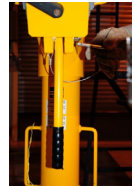
- 12.** Remove the retaining pin from its location at the center of the davi-t arm. Extend the inner mast of the davit arm using the rotating handle located at the bottom of the davit arm.



- 13.** Extend davit arm to full length and lock with retaining pin.



- 14.** In order to ease the rotational movement of the davit arm, re-move the locking pin from its location.



- 15.** Lift the handle to horizontal position and lock with retaining pin.





**WARNING:** Only adaptors and brackets approved, certified and recommended by the manufacturer are to be used with the XTIRPA system.

**WARNING:** It should be noted that only plates, support and adaptors that have been certified, approved and recommended by the manufacturer can be used.

**WARNING:** If necessary, use a manhole guard to secure your working area and to prevent falls.

**IMPORTANT:** Make sure the lifeline cable or rope is positioned directly over the work area. Use only certified lifeline cable or rope, in perfect working condition, with appropriate specifications, including maximum leverage capabilities, for the intended use of the XTIRPA system.

**WARNING:** It is important to place the XTIRPA system on a hard and level surface. Do not use the XTIRPA system on a soft surface, including, but not limited to, sand, grass, gravel and rocks. If you have any questions about use or maintenance or whether the XTIRPA system is appropriate for your job, please contact the manufacturer PSP INNOVA INC.

**WARNING:** Any system must be immediately removed from circulation if its safety is questioned, or if it was used to stop a fall. It is imperative not to use the system before a competent person authorizes in writing the integrity of the product before its reuse.

**WARNING:** For the fall arrest systems, it is essential for safety that the anchoring device or the anchor point is always correctly positioned and that effort is made so as to reduce the risk of falls and the height of fall. It is essential that the device or the anchor point is placed above the position of the user.

**WARNING:** When using a fall arrest system, it is essential, for security measures, to verify the required open space underneath the user on the workplace before each use, if possible, so that in case of a fall that there is no collision with the ground or any object in the area. The anchoring point must be above the user's position.





**WARNING:** A fall protection harness is the only body support device allowed to be used for fall protection.

**IMPORTANT:** The EN 361-compliant fall protection harness must be attached to the winch's cable or rope by the anchoring point of the EN 361-compliant harness.

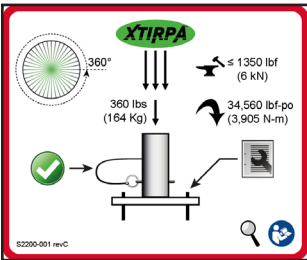
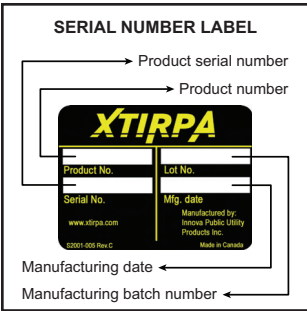
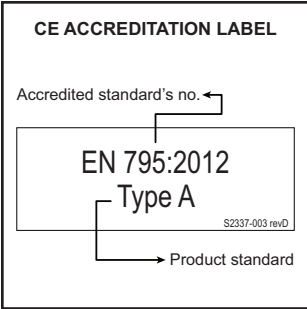
**WARNING:** The XTIRPA system must be used only with adapters, anchors, connectors, pulleys, other components, parts and subsystems certified, approved and recommended by the manufacturer. Substitutions or replacements made with non-approved adapters, anchors, connectors, other components, parts or subsystems may be incompatible, and may jeopardize the safety and reliability of the complete XTIRPA system and may result in serious injury or death, for which manufacturer disclaims all warranties and liabilities whatsoever, user, owner and purchaser of the XTIRPA system waiving all claims, rights and recourses against the manufacturer derived therefrom. Connectors (EN 362) (hooks, carabiners, D-rings) must comply with EN362.

**WARNING:** The manufacturer's Instruction and safety manual must be followed for proper use and maintenance of this product. Alterations or misuse of this product or failure to follow instructions may result in serious injury or death, for which the manufacturer disclaims all warranties and liabilities whatsoever, user, owner and purchaser of the XTIRPA system waiving all claims, rights and recourses against the manufacturer derived therefrom.

# KEEP THE FOLLOWING INSTRUCTIONAL AND SAFETY SIGNS CLEAN AND LEGIBLE AT ALL TIMES

|   |   |   |   |
|---|---|---|---|
| <p><b>XTIRPA</b><br/>IN-2197<br/>Davit-Arm 96"</p> <p><b>Standards:</b><br/>Meets CE standards<br/>EN 795:2012 and TS 16415:2013</p> <p><b>Maximum Working Load:</b><br/>360 lb (164 kg) per anchor</p> <p><b>Materials:</b><br/>Aluminum, Stainless Steel, Dacron™</p> <p><b>Inspection:</b><br/>Before each use, inspect the XTIRPA system to determine that it is in perfect working condition. At least once a month, the portable manhole guards and other components of the XTIRPA system should be inspected by a competent person in accordance with the user's instruction and safety manual.</p> <p>Do not use if inspection reveals a problem, an unsafe or defective condition. Must not be repaired by other than manufacturer or an authorized service center.</p> <p>Not user repairable.</p> <p><b>Installation and use:</b><br/>Ensure that all components and parts are in perfect working condition and working properly. Make sure that your anchoring point and mast are in perfect working condition. Install the davit-arm completely over the mast and ensure that it is free to rotate. Install the mounting plates on the davit-arm at the desired locations (depending on the winch model). Mount the winches with their supports on the mounting plates and lock with pins. Place the winch cables through the roller and fixed guides and over the pulley that are on the same side of the winch. Adjust as needed the roller guide assembly to obtain a minimum winch cable deflection.</p> <p>It is very important that the winch cables are free to slide through the guides and that there is no pinch points.</p> <p><b>Warnings:</b><br/>For all other mast applications, consult manufacturer or distributor.</p> <p>Manufacturer's instructions must be followed for proper use and maintenance of this product. Alterations or misuse of this product or failure to follow instructions may result in serious injury or death, for which manufacturer and distributor disclaim all warranties and liabilities whatsoever. User, owner and purchaser of the XTIRPA system waiving all claims, rights and recourses against manufacturer and distributor derived there from.</p>  <p>Products manufactured by:<br/>Wesco Pacific Corp., Phoenix, AZ<br/>10000 North 100th Street<br/>Oakley, CA, Canada J2J 1M4<br/>52197-02 revD<br/>Made in Canada</p> | <p><b>XTIRPA</b><br/>IN-2199<br/>Mast</p> <p><b>Standards:</b><br/>Meets CE standards<br/>EN 795:2012 and TS 16415:2013</p> <p><b>Maximum Working Load:</b><br/>360 lb (164 kg) per anchor</p> <p><b>Materials:</b><br/>Aluminum</p> <p><b>Inspection:</b><br/>Before each use, inspect the XTIRPA system to determine that it is in perfect working condition. At least once a month, the portable manhole guards and other components of the XTIRPA system should be inspected by a competent person in accordance with the user's instruction and safety manual.</p> <p>Do not use if inspection reveals a problem, an unsafe or defective condition. Must not be repaired by other than manufacturer or an authorized service center.</p> <p>Not user repairable.</p> <p><b>Installation and use:</b><br/>Ensure that all components and parts are in perfect working condition and working properly. Make sure that your anchoring point is in perfect working condition and that it is free of debris, ice or any other object that might block the insertion of the mast. Insert the mast into the anchor point and verify that it is free to rotate freely.</p> <p><b>Warnings:</b><br/>For all other mast applications, consult manufacturer or distributor.</p> <p>Manufacturer's instructions must be followed for proper use and maintenance of this product. Alterations or misuse of this product or failure to follow instructions may result in serious injury or death, for which manufacturer and distributor disclaim all warranties and liabilities whatsoever. User, owner and purchaser of the XTIRPA system waiving all claims, rights and recourses against manufacturer and distributor derived there from.</p>  <p>Products manufactured by:<br/>Wesco Pacific Corp., Phoenix, AZ<br/>10000 North 100th Street<br/>Oakley, CA, Canada J2J 1M4<br/>52199-02 revD<br/>Made in Canada</p> | <p><b>XTIRPA</b><br/>IN-2414<br/>Mast</p> <p><b>Standards:</b><br/>Meets CE standards<br/>EN 795:2012 and TS 16415:2013</p> <p><b>Maximum Working Load:</b><br/>360 lb (164 kg) per anchor</p> <p><b>Materials:</b><br/>Aluminum</p> <p><b>Inspection:</b><br/>Before each use, inspect the XTIRPA System to determine that it is in perfect working condition. At least once a month, the portable manhole guards and other components of the XTIRPA system should be inspected by a competent person in accordance with the User's instruction and safety manual.</p> <p>Do not use if inspection reveals a problem, an unsafe or defective condition. Must not be repaired by other than manufacturer or an authorized service center.</p> <p>Not user repairable.</p> <p><b>Installation and use:</b><br/>Ensure that all components and parts are in perfect working condition and working properly. Make sure that your anchoring point is in perfect working condition and that it is free of debris, ice or any other object that might block the insertion of the mast. Insert the mast into the anchor point and verify that it is free to rotate freely.</p> <p><b>Warnings:</b><br/>For all other mast applications, consult manufacturer or distributor.</p> <p>Manufacturer's instructions must be followed for proper use and maintenance of this product. Alterations or misuse of this product or failure to follow instructions may result in serious injury or death, for which manufacturer and distributor disclaim all warranties and liabilities whatsoever. User, owner and purchaser of the XTIRPA system waiving all claims, rights and recourses against manufacturer and distributor derived there from.</p>  <p>Products manufactured by:<br/>Wesco Pacific Corp., Phoenix, AZ<br/>10000 North 100th Street<br/>Oakley, CA, Canada J2J 1M4<br/>52414-02 revD<br/>Made in Canada</p> | <p><b>XTIRPA</b><br/>IN-2470<br/>Mast</p> <p><b>Standards:</b><br/>Meets CE standards<br/>EN 795:2012 and TS 16415:2013</p> <p><b>Maximum Working Load:</b><br/>360 lb (164 kg)</p> <p><b>Materials:</b><br/>Aluminum</p> <p><b>Inspection:</b><br/>Before each use, inspect the XTIRPA system to determine that it is in perfect working condition. At least once a month, the portable manhole guards and other components of the XTIRPA system should be inspected by a competent person in accordance with the User's instructions and safety manual.</p> <p>Do not use if inspection reveals a problem, an unsafe or defective condition. Must not be repaired by other than manufacturer or an authorized service center.</p> <p>Not user repairable.</p> <p><b>Installation and use:</b><br/>Ensure that all components and parts are in perfect working condition and working properly. Make sure that your anchoring point is in perfect working condition and that it is free of debris, ice or any other object that might block the insertion of the mast. Insert the mast into the anchor point and verify that it is free to rotate freely.</p> <p><b>Warnings:</b><br/>For all other mast applications, consult manufacturer or distributor.</p> <p>Manufacturer's instructions must be followed for proper use and maintenance of this product. Alterations or misuse of this product or failure to follow instructions may result in serious injury or death, for which manufacturer and distributor disclaim all warranties and liabilities whatsoever. User, owner and purchaser of the XTIRPA system waiving all claims, rights and recourses against manufacturer and distributor derived there from.</p>  <p>Products manufactured by:<br/>Wesco Pacific Corp., Phoenix, AZ<br/>10000 North 100th Street<br/>Oakley, CA, Canada J2J 1M4<br/>52470-02 revB<br/>Made in Canada</p> |
|---|---|---|---|

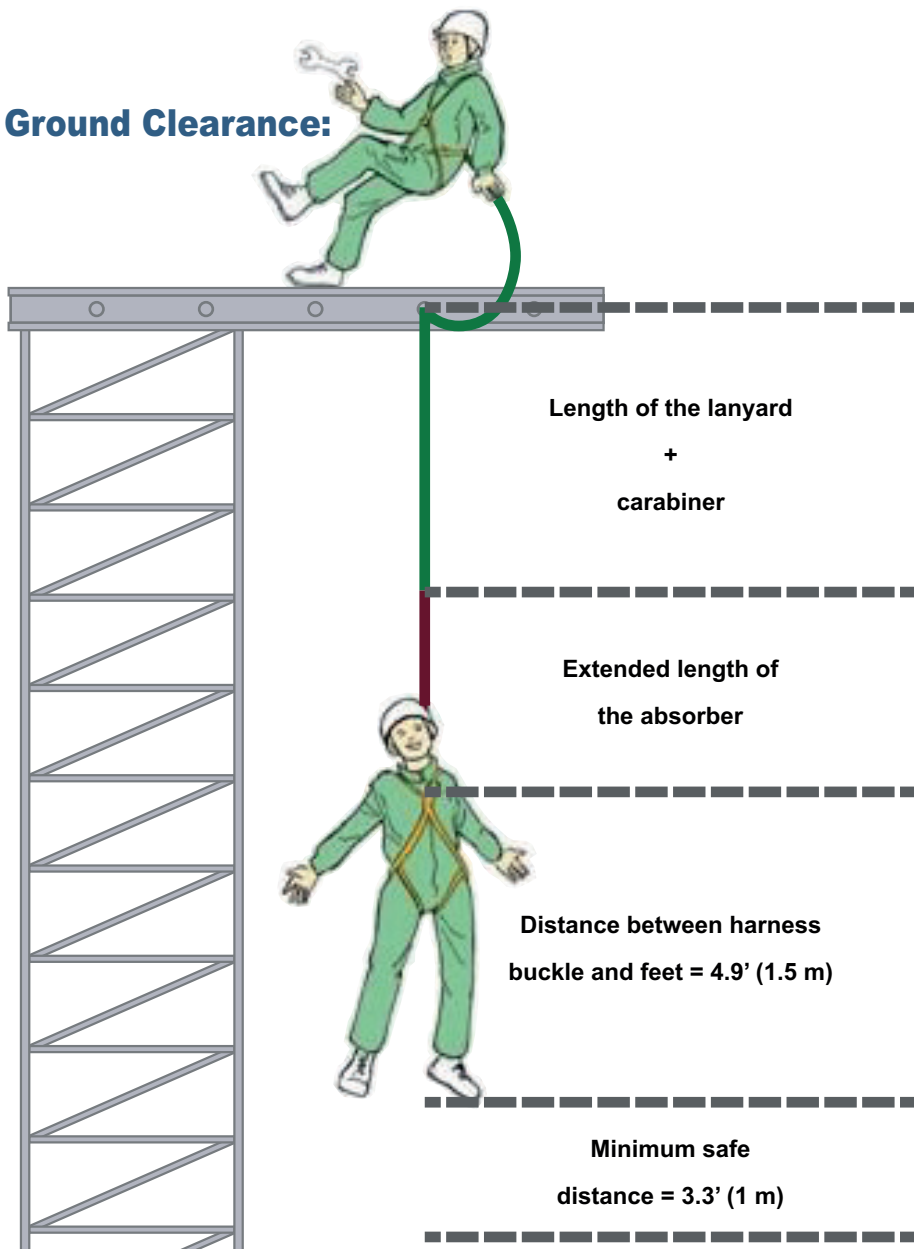




**CMT 360 LB [164 KG] MAX**

-8-  
**CALCULATION DIAGRAM**

**Ground Clearance:**



**Pay attention to the distance to the ground!**

Product: \_\_\_\_\_ Purchasing date: \_\_\_\_\_

Model number: \_\_\_\_\_ Serial number: \_\_\_\_\_ Manufacturing date: \_\_\_\_\_

Date of next inspection: \_\_\_\_\_ Date of 1st use: \_\_\_\_\_

| INSPECTION DATE | LABELS                   | CORROSION                | STRUCTURAL DAMAGE        | WELDING                  | PINS & HARDWARE          | OTHER (SPECIFY) | CORRECTIVE ACTION TAKEN (if required) | INSPECTED BY: |
|-----------------|--------------------------|--------------------------|--------------------------|--------------------------|--------------------------|-----------------|---------------------------------------|---------------|
|                 | <input type="checkbox"/> | <input type="checkbox"/> | <input type="checkbox"/> | <input type="checkbox"/> | <input type="checkbox"/> |                 |                                       |               |
|                 | <input type="checkbox"/> | <input type="checkbox"/> | <input type="checkbox"/> | <input type="checkbox"/> | <input type="checkbox"/> |                 |                                       |               |
|                 | <input type="checkbox"/> | <input type="checkbox"/> | <input type="checkbox"/> | <input type="checkbox"/> | <input type="checkbox"/> |                 |                                       |               |
|                 | <input type="checkbox"/> | <input type="checkbox"/> | <input type="checkbox"/> | <input type="checkbox"/> | <input type="checkbox"/> |                 |                                       |               |
|                 | <input type="checkbox"/> | <input type="checkbox"/> | <input type="checkbox"/> | <input type="checkbox"/> | <input type="checkbox"/> |                 |                                       |               |
|                 | <input type="checkbox"/> | <input type="checkbox"/> | <input type="checkbox"/> | <input type="checkbox"/> | <input type="checkbox"/> |                 |                                       |               |
|                 | <input type="checkbox"/> | <input type="checkbox"/> | <input type="checkbox"/> | <input type="checkbox"/> | <input type="checkbox"/> |                 |                                       |               |
|                 | <input type="checkbox"/> | <input type="checkbox"/> | <input type="checkbox"/> | <input type="checkbox"/> | <input type="checkbox"/> |                 |                                       |               |
|                 | <input type="checkbox"/> | <input type="checkbox"/> | <input type="checkbox"/> | <input type="checkbox"/> | <input type="checkbox"/> |                 |                                       |               |
|                 | <input type="checkbox"/> | <input type="checkbox"/> | <input type="checkbox"/> | <input type="checkbox"/> | <input type="checkbox"/> |                 |                                       |               |
|                 | <input type="checkbox"/> | <input type="checkbox"/> | <input type="checkbox"/> | <input type="checkbox"/> | <input type="checkbox"/> |                 |                                       |               |

COMMENTS: \_\_\_\_\_

\*Any failure to follow the Manufacturer's instructions contained in the instruction and safety manual, including with regard to the inspection and maintenance of the XTIRPA system and of components and parts there of, will cause warranty to become null and void and may result in serious injury or death of the user, for which the Manufacturer disclaims all warranties and liabilities whatsoever, user, owner and purchaser of the XTIRPA system waiving all claims, rights and recourses against Manufacturer and derived there from.



# REGISTRATION LIMITED WARRANTY FORM



Produits de Services Publics - Public Utility Products Inc.

This warranty applies only to the original purchaser and is the only one applicable to the Xtirpa System, and is in lieu of all other warranties, expressed or implied. The purchaser has to complete and return to INNOVA Public Utility Products Inc., all information within thirty days of purchase. Otherwise limited warranty will be void, if the product is not registered.

Register now: Mail or fax this registration form or visit our web site and register online.  
Mail: INNOVA Public Utility Products Inc., 1040, boul. Industriel, Granby J2J 1A4  
Fax: (450) 372-9936  
Web site: www.xtirpa.com

## XTIRPA PRODUCT

Model number: \_\_\_\_\_ Purchasing date: \_\_\_\_\_  
Serial number: \_\_\_\_\_ Manufacturing date: \_\_\_\_\_

## CUSTOMER / USER INFORMATION

Company: \_\_\_\_\_ Phone: \_\_\_\_\_  
Street address: \_\_\_\_\_ Fax: \_\_\_\_\_  
City: \_\_\_\_\_ State: \_\_\_\_\_ E-Mail: \_\_\_\_\_  
Zip: \_\_\_\_\_

Name: \_\_\_\_\_ Do you wish to be on Innova's mailing list YES  NO   
Position: \_\_\_\_\_ for new product literature: YES  NO

\*Any failure to follow the Manufacturer's instructions contained in the instruction and safety manual, including with regard to the inspection and maintenance of the XTIRPA system and of components and parts there of, will cause warranty to become null and void and may result in serious injury or death of the user, for which the Manufacturer disclaims all warranties and liabilities whatsoever, user, owner and purchaser of the XTIRPA system waiving all claims, rights and recourses against Manufacturer and derived there from.

**Manufactured by: INNOVA Public Utility Products Inc. 1040 boul. Industriel, Granby, Quebec, Canada J2J 1A4** Tel: (450) 777-1240 Fax: (450) 372-9936





# NOTES

---

---

---

---

---

---

---

---

---

---

---

---

---

---

---

---

---

---

---

---

---

---

---

---

---

---

# NOTES

---

---

---

---

---

---

---

---

---

---

---

---

---

---

---

---

---

---

---

---

---

---

---

---



# **XTIRPA™**

CONFINED SPACE SAFETY SOLUTIONS

**Head Office and Manufacturing Plant**

Innova Public Utility Productions Inc.  
1040, Boulevard Industriel  
Canada, Qc, Canada  
J2J 1A4

Phone: 450.777.1240  
Toll free: 1.800.461.1937

[www.xtirpa.com](http://www.xtirpa.com)



Xtirpa is a registered trademark of Innova  
Public Utility Productions Inc. used under  
license in Canada

*MU8006-012ENG rev04*