

STA-10



CZ – POZOR: Práce s výrobkem INNOTECH je povolena teprve po kompletním přečtení a porozumění bezpečnostních pokynů a návodu k montáži.

DE – ACHTUNG: Die Verwendung des INNOTECH-Produkts ist erst zulässig, nachdem die Sicherheitshinweise und Montageanleitung vollständig gelesen und verstanden wurden.

DK – GIV AGT: Det er først tilladt at anvende INNOTECH-produktet, efter du har læst og forstået sikkerhedshenvisningerne og monteringsvejledningen.

EN – ATTENTION: Use of the INNOTECH product is permitted only after the safety instructions and instruction manual in the respective language have been read.

ES – ATENCIÓN: Solo se autorizará el uso del producto INNOTECH una vez que se hayan leído y entendido completamente las indicaciones de seguridad y las instrucciones de montaje.

FR – ATTENTION : L'utilisation du produit INNOTECH n'est autorisée qu'après avoir intégralement lu et compris les consignes de sécurité et la notice de montage.

HU – FIGYELEM: Az INNOTECH termék használatát csak akkor engedhető meg, ha a biztonsági utasításokat és az összeszerelési utasításokat teljes mértékben elolvasta és megértette.

IT – ATTENZIONE: L'utilizzo del prodotto INNOTECH è permesso solo previa lettura completa e comprensione integrale delle avvertenze di sicurezza e le istruzioni di montaggio.

NL – ATTENTIE: Dit INNOTECH-product mag pas worden gebruikt nadat u de gebruikershandleiding en de montagehandleiding volledig heeft gelezen en begrepen.

PL – UWAGA: Używanie produktu INNOTECH jest dozwolone dopiero po zapoznaniu się z wszystkimi zasadami bezpieczeństwa i instrukcją montażu.

PT – ATENÇÃO: O uso do produto INNOTECH apenas é permitido depois de terem sido lidas e compreendidas na totalidade as indicações de segurança e o manual de montagem.

SK – POZOR: Používanie výrobku INNOTECH je povolené až vtedy, keď si úplne prečítate a pochopíte bezpečnostné pokyny a montážny návod.

SL – POZOR: Uporaba izdelkov INNOTECH je dovoljena šele po tem, ko preberete in so vam jasne vse varnostne opombe in navodila za montažo.

SV – OBS : INNOTECH-produkten får inte användas, förrän säkerhets- och monteringsinstruktionerna har lästs igenom och förstås fullständigt.

TR – DİKKAT: INNOTECH ürününün kullanımına ancak güvenlik uyarıları ve montaj talimatı tamamen okunup anlaşıldıktan sonra izin verilir.

ZH – 注意: 只有在完全阅读并理解安全提示和装配说明书之后,才允许使用INNOTECH产品。



1



2



2

3



3

4



3

5



4

6



6

7



7

8



7

9



11

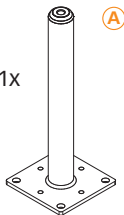
2



1x



1x



A) INNOTECH STA-10



INNOTECH



3333-...-...



max. 5 (5)
EN 795:2012 TYP A

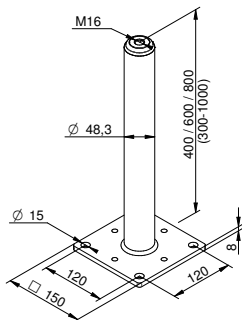


EN 795:2012

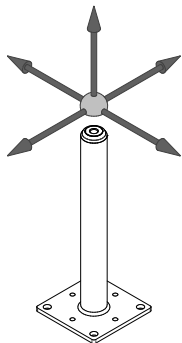
3



[mm]

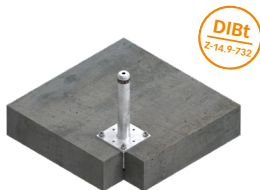


4





[mm]

**BEF-104-A4****BEF-111**



Ø 14



19



40

[mm]

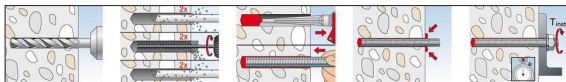
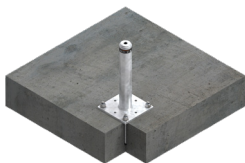


FISCHER

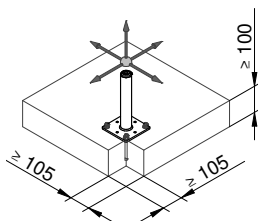
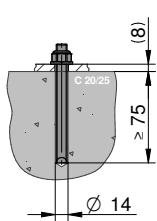
MONT-FIS-SB-390-S
FISCHER FIS-SB-390-S



4x M12x...	8.8 / A2-70 / A4-70
4x M12 DIN125	8.8 / A2-70 / A4-70
4x M12 DIN985	8.8 / A2-70 / A4-70



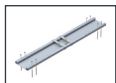
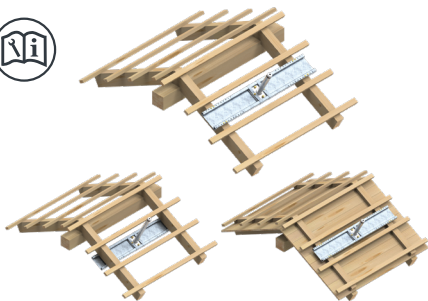
FISCHER FIS-SB-390-S



HILTI HY 200



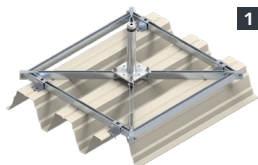
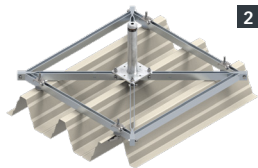
[mm]

**BEF-201****BEF-203****BEF-206**

7



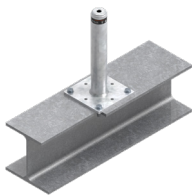
[mm]

**BEF-303****1** BEF-303-01**2** BEF-303-03**1****2**

8

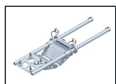
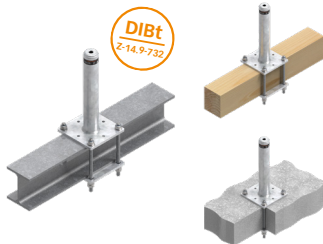
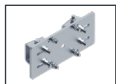
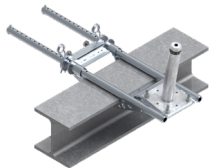
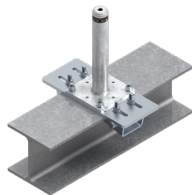


[mm]

**BEF-308**



[mm]

**BEF-401-10****BEF-412****BEF-830-03,04,05 /
BEF-840, -841**



Ø 13,5



19

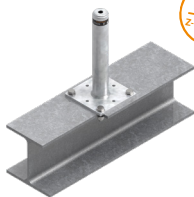
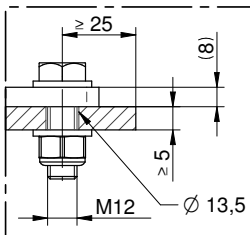


60

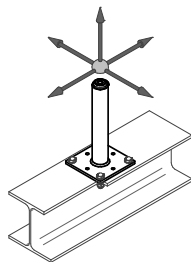
[mm]



4x M12x... DIN933	8.8 / A2-70 / A4-70
8x M12 DIN125	8.8 / A2-70 / A4-70
4x M12 DIN985	8.8 / A2-70 / A4-70

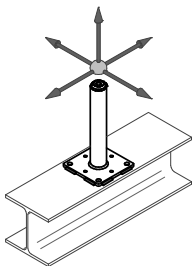
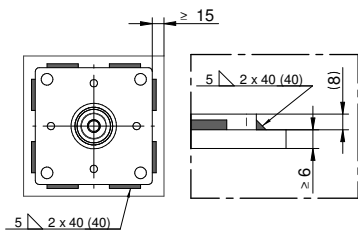


DIBt
Z-14.9-732





[mm]



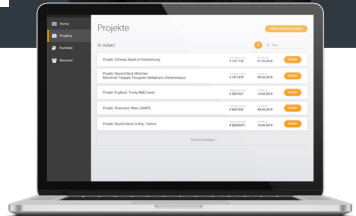
INNOTECH WEB-APP

INNO|doc

Simple. Clear. Document.



www.innotech.at/de/innodoc



INNOTECH Arbeitsschutz GmbH

Laizing 10, A-4656 Kirchham

T: +43 7619 22122-0

office@innotech.at | www.innotech.at

