

STA-12



- CZ – POZOR:** Práce s výrobkem INNOTECH je povolena teprve po kompletním přečtení a porozumění bezpečnostních pokynů a návodu k montáži.
- DE – ACHTUNG:** Die Verwendung des INNOTECH-Produkts ist erst zulässig, nachdem die Sicherheitshinweise und Montageanleitung vollständig gelesen und verstanden wurden.
- DK – GIV AGT:** Det er først tilladt at anvende INNOTECH-produktet, efter du har læst og forstået sikkerhedshenvisningerne og monteringsvejledningen.
- EN – ATTENTION:** Use of the INNOTECH product is permitted only after the safety instructions and instruction manual in the respective language have been read.
- ES – ATENCIÓN:** Solo se autorizará el uso del producto INNOTECH una vez que se hayan leído y entendido completamente las indicaciones de seguridad y las instrucciones de montaje.
- FR – ATTENTION :** L'utilisation du produit INNOTECH n'est autorisée qu'après avoir intégralement lu et compris les consignes de sécurité et la notice de montage.
- HU – FIGYELEM:** Az INNOTECH termék használatát csak akkor engedhető meg, ha a biztonságági utasításokat és az összeszerelési utasításokat teljes mértékben elolvasta és megértette.
- IT – ATTENZIONE:** L'utilizzo del prodotto INNOTECH è permesso solo previa lettura completa e comprensione integrale delle avvertenze di sicurezza e le istruzioni di montaggio.
- NL – ATTENTIE:** Dit INNOTECH-product mag pas worden gebruikt nadat u de gebruikershandleiding en de montagehandleiding volledig heeft gelezen en begrepen.
- PL – UWAGA:** Używanie produktu INNOTECH jest dozwolone dopiero po zapoznaniu się z wszystkimi zasadami bezpieczeństwa i instrukcją montażu.
- PT – ATENÇÃO:** O uso do produto INNOTECH apenas é permitido depois de terem sido lidas e compreendidas na totalidade as indicações de segurança e o manual de montagem.
- SK – POZOR:** Používanie výrobku INNOTECH je povolené až vtedy, keď si úplne prečítate a pochopíte bezpečnostné pokyny a montážny návod.
- SL – POZOR:** Uporaba izdelkov INNOTECH je dovoljena šele po tem, ko preberete in so vam jasne vse varnostne opombe in navodila za montažo.
- SV – O B S:** INNOTECH-produkten får inte användas, förrän säkerhets- och monteringsinstruktionerna har lästs igenom och förstås fullständigt.
- TR – DİKKAT:** INNOTECH ürününün kullanılmasına ancak güvenlik uyarılarını ve montaj talimatını tamamen okunup anlaşıldıktan sonra izin verilir.
- ZH – 注意:** 只有在完全阅读并理解安全提示和装配说明书之后,才允许使用INNOTECH产品。



1



2



2

3



3

4



3

5



4

6



7

7



9

8



10

9



12

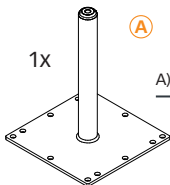
2



1x



1x



A

A) INNOTECH STA-12



INNOTECH



3333-...-...



EN 795:2012 TYP A

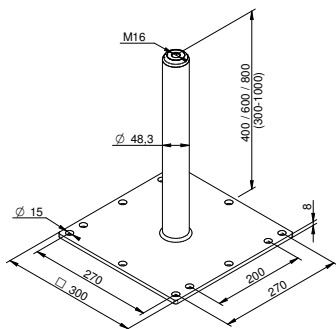


EN 795:2012

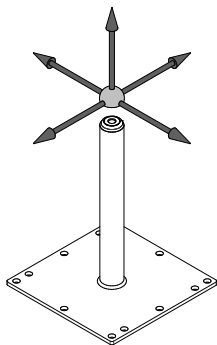
3



[mm]

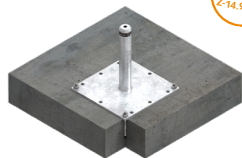


4



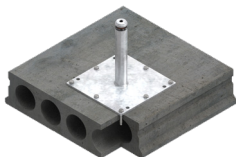


[mm]

**BEF-102****BEF-104-A4**



[mm]

**BEF-107****BEF-111**



Ø 14



19



40 Nm

[mm]

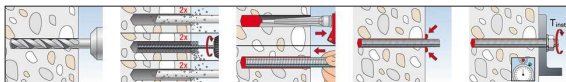
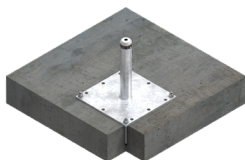


FISCHER

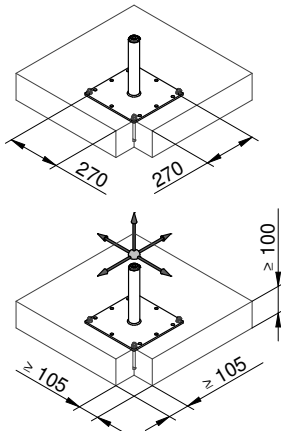
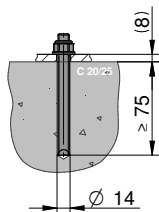
MONT-FIS-SB-390-S
FISCHER FIS-SB-390-S



4x M12x...	8.8 / A2-70 / A4-70
4x M12 DIN125	8.8 / A2-70 / A4-70
4x M12 DIN985	8.8 / A2-70 / A4-70



➔  **FISCHER FIS-SB-390-S**



HILTI HY 200



[mm]

**BEF-209**

STA-12:
2x BEF-209

**BEF-209-A2**

DIBt
Z-14.9-732

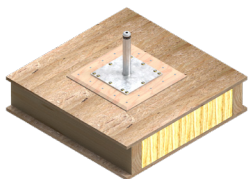
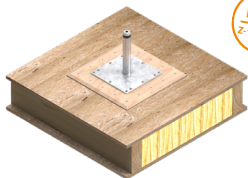


STA-12:
2x BEF-209-A2



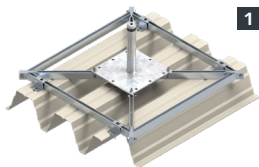
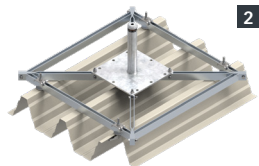
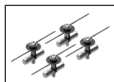
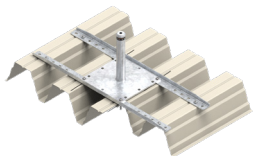


[mm]

**BEF-210****BEF-210-A2**

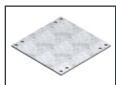


[mm]

**BEF-303****1** BEF-303-01**2** BEF-303-03**1****2****BEF-307****1** BEF-307-1



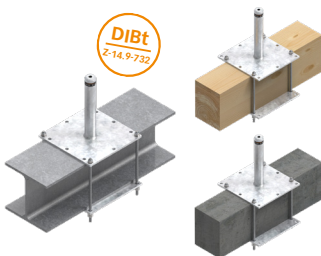
[mm]



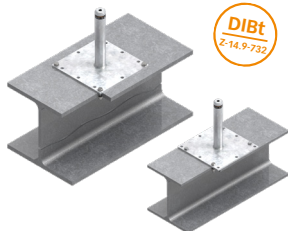
BEF-401-12



DIBt
Z-14.9-732



DIBt
Z-14.9-732



Ø 13,5

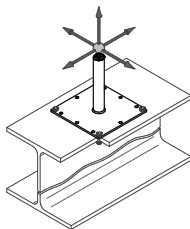
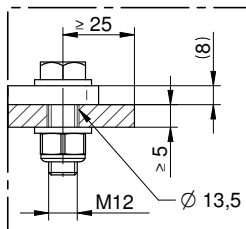
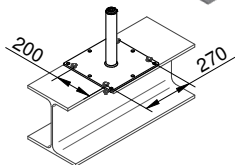
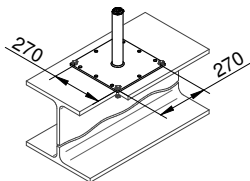


19

60 Nm

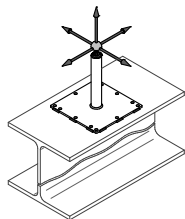
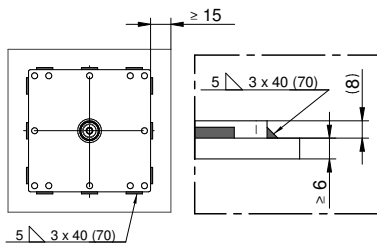
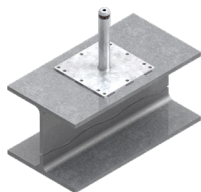


4x M12x... DIN933	8.8 / A2-70 / A4-70
8x M12 DIN125	8.8 / A2-70 / A4-70
4x M12 DIN985	8.8 / A2-70 / A4-70





[mm]



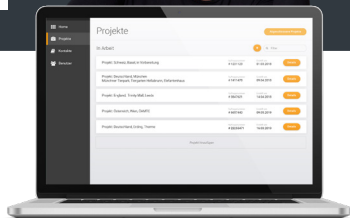
INNOTECH WEB-APP

INNO|doc

Simple. Clear. Document.



www.innotech.at/de/innodoc



INNOTECH Arbeitsschutz GmbH

Laizing 10, A-4656 Kirchham

T: +43 7619 22122-0

office@innotech.at | www.innotech.at

