



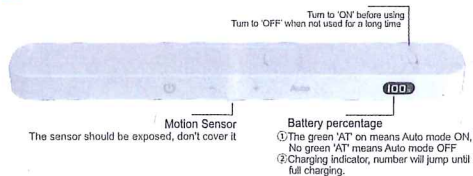
Motion Sensor Light Bar

Please read the instruction manual carefully before using the product and keep it well

Product Parameters:

Power: 2W
 Voltage: 5V
 Light source: 60pcs LED
 Battery capacity: 1300mAh
 Product size: 240*36*18mm
 Product weight: 110g

Product Introduction:



Touch control area:

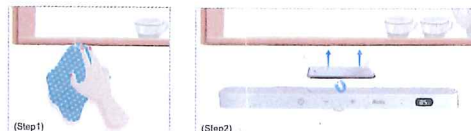
- ⏻ Always ON/Always OFF
- + Five levels of brightness adjustment (10%/30%/50%/70%/100%)
Working time: 10% brightness--42 hours
100% brightness--4 hours

Auto

Automatically sensing mode.

The light lights up automatically upon the sensor detects human activity under dark environment, automatically turns off after 20s
 (Note: when touch 'Auto' to turn on Auto mode in a bright environment, it will also be lighted up and automatically turns off after 20 seconds, and officially enters the Auto mode. Human activity is needed to trigger the sensing light under the dark environment at this time.)

Installation instructions:



Precautions:

1. Charging: please use 5V charger or mobile power bank to charge this product when using for the first time.
2. This product is non-waterproof approved, do not use it in a humid environment.
3. Don't install two motion sensor lights too close, the light of one too bright may cause the other not light up if they are too close.
4. When not using the lamp for a long time, please turn the switch to OFF on the back of lamp.