

2



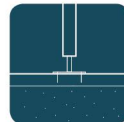
8,5h

43m²

9,7x5,2x3,1m



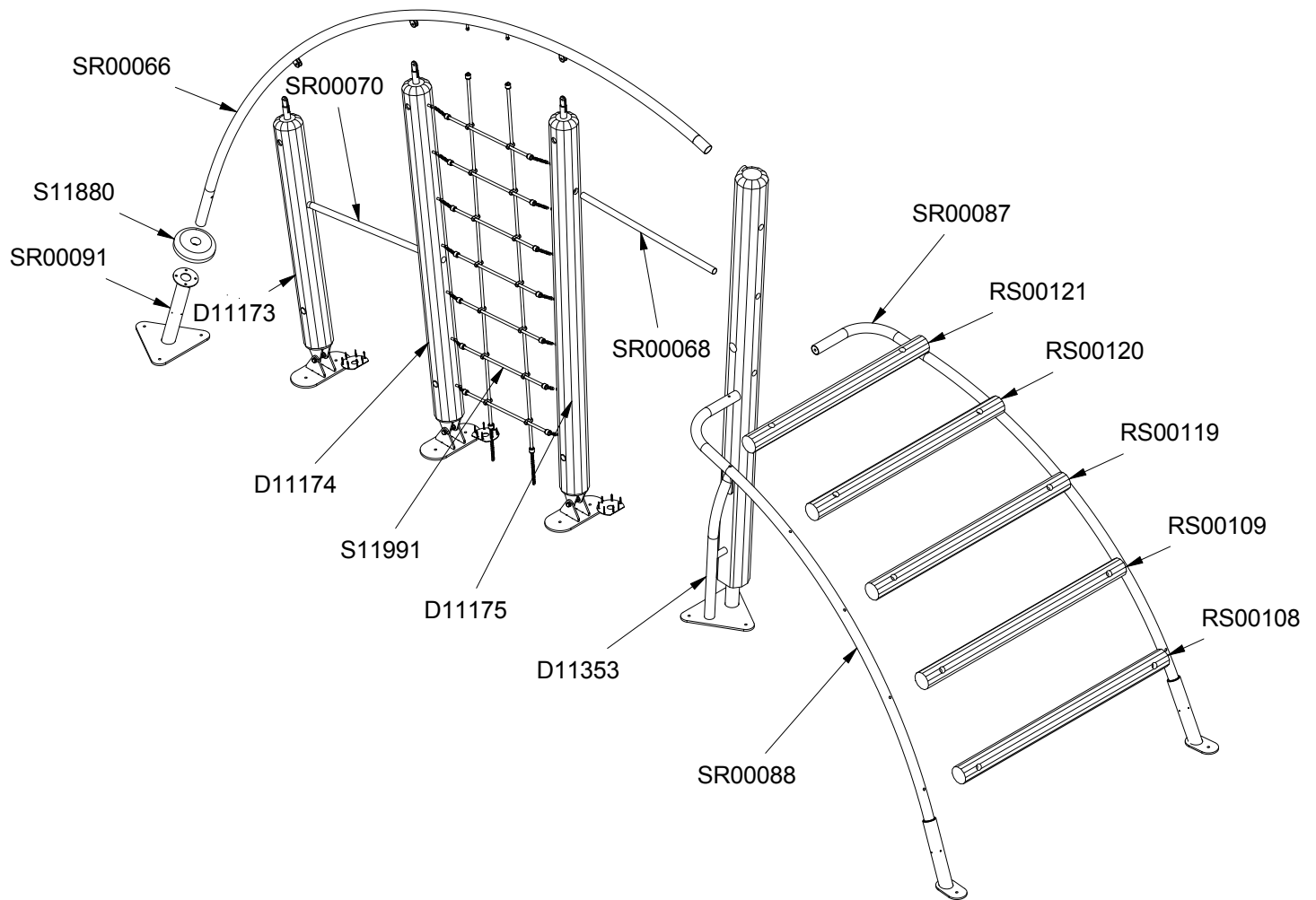
~439 kg



45x320cm

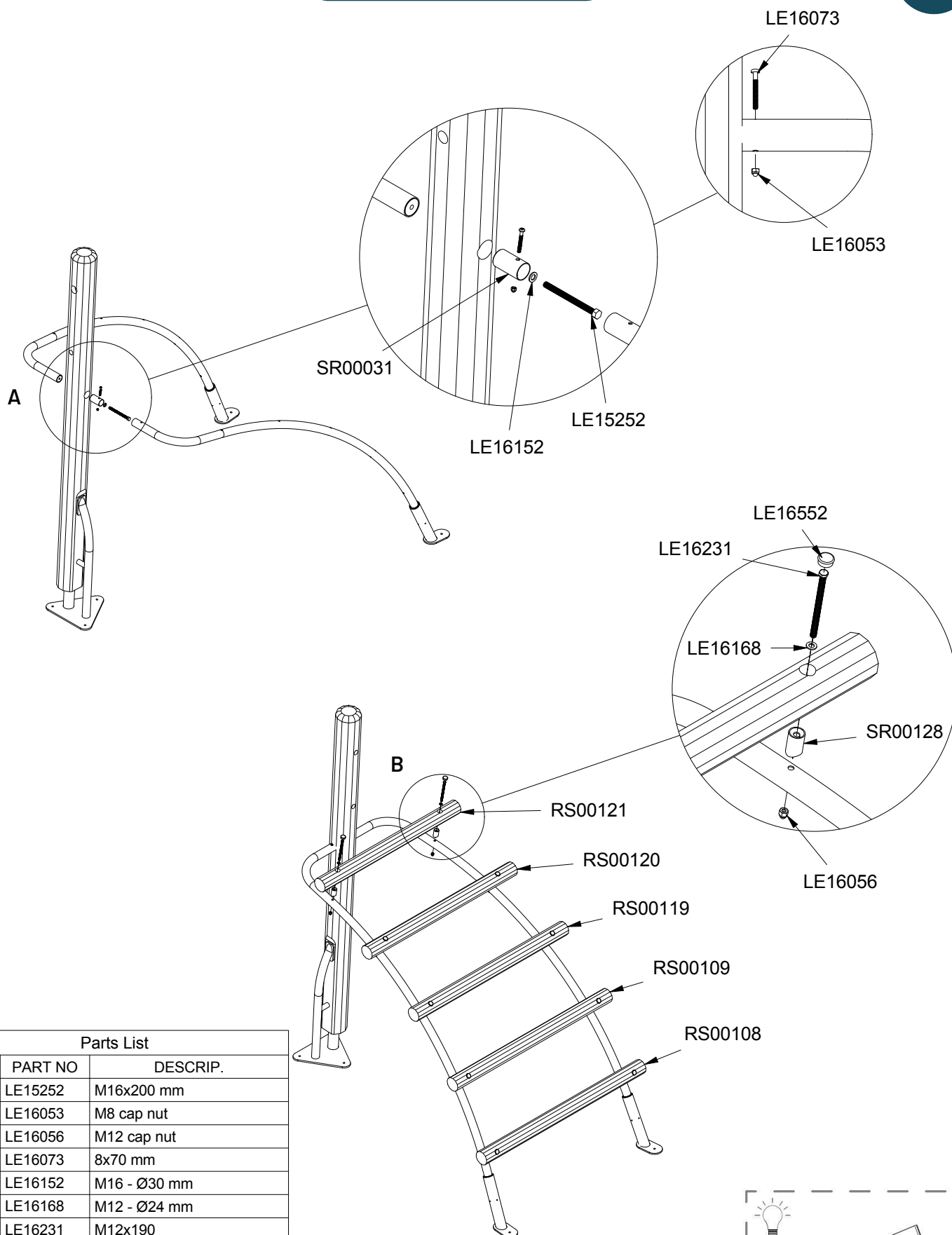


105kg



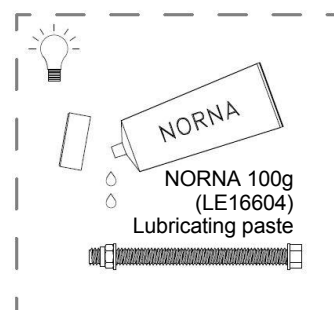
Parts List

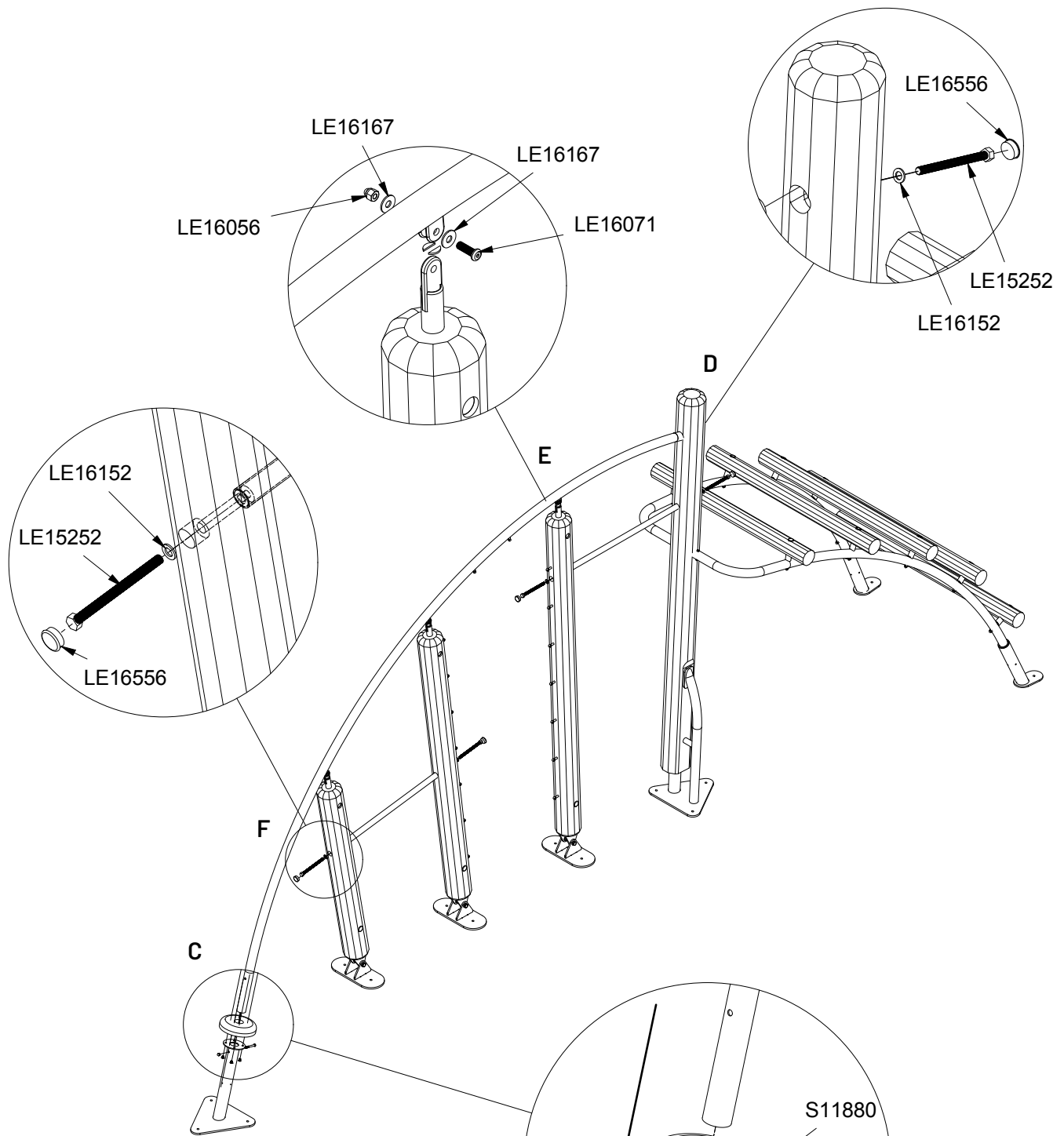
QTY	PART NO	DESCRIP.
1	D11173	430x1860mm, assembled
1	D11174	430x2620mm, assembled
1	D11175	430x2980mm, assembled
1	D11353	450x3200mm, assembled
1	RS00108	Robinia, Ø120x1700mm
1	RS00109	Robinia, Ø120x1650mm
1	RS00119	Robinia, Ø120x1600mm
1	RS00120	Robinia, Ø120x1550mm
1	RS00121	Robinia, Ø120x1450mm
1	S11880	Ø250/45 mm
1	S11991	Taifun net
1	SR00031	Ø54x90 mm
1	SR00066	Ø60 Tube for Sun Arc
1	SR00068	Ø38x1100mm, bar
1	SR00070	Ø38x925mm, bar
1	SR00087	Ø60/Ø80 right ladder frame
1	SR00088	Ø60/Ø80 left ladder frame
1	SR00091	Ø80x400mm



Parts List

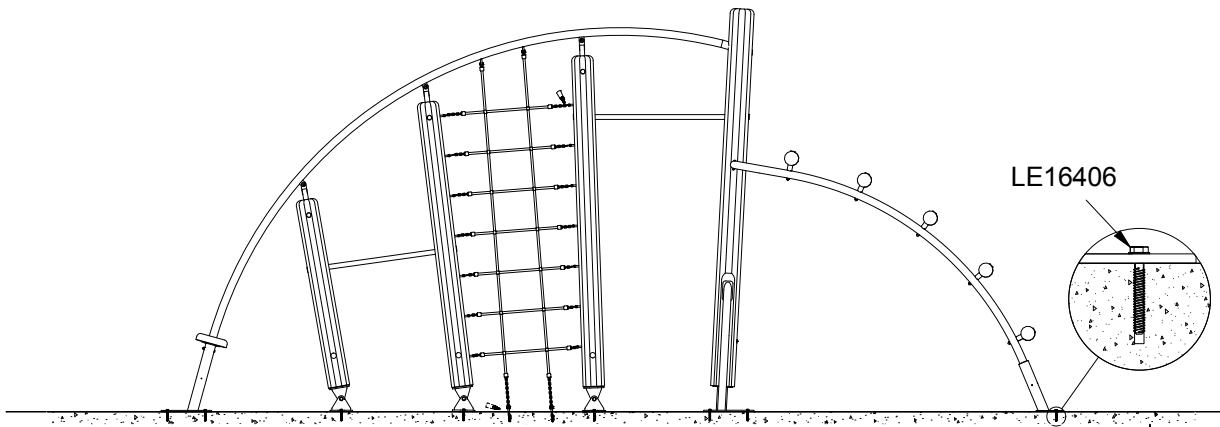
QTY	PART NO	DESCRIP.
1	LE15252	M16x200 mm
1	LE16053	M8 cap nut
10	LE16056	M12 cap nut
1	LE16073	8x70 mm
1	LE16152	M16 - Ø30 mm
10	LE16168	M12 - Ø24 mm
10	LE16231	M12x190
10	LE16552	Ø34/38 mm
1	RS00108	Robinia, Ø120x1700mm
1	RS00109	Robinia, Ø120x1650mm
1	RS00119	Robinia, Ø120x1600mm
1	RS00120	Robinia, Ø120x1550mm
1	SR00031	Ø54x90 mm
10	SR00128	Ø38 mm, Spacer



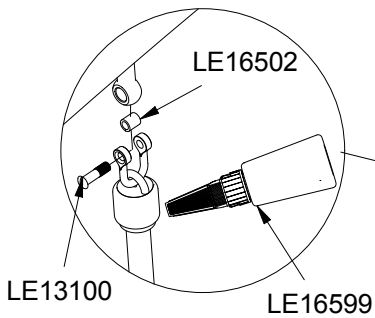
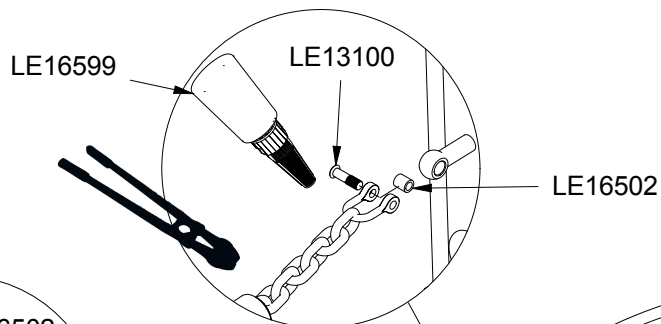


Parts List

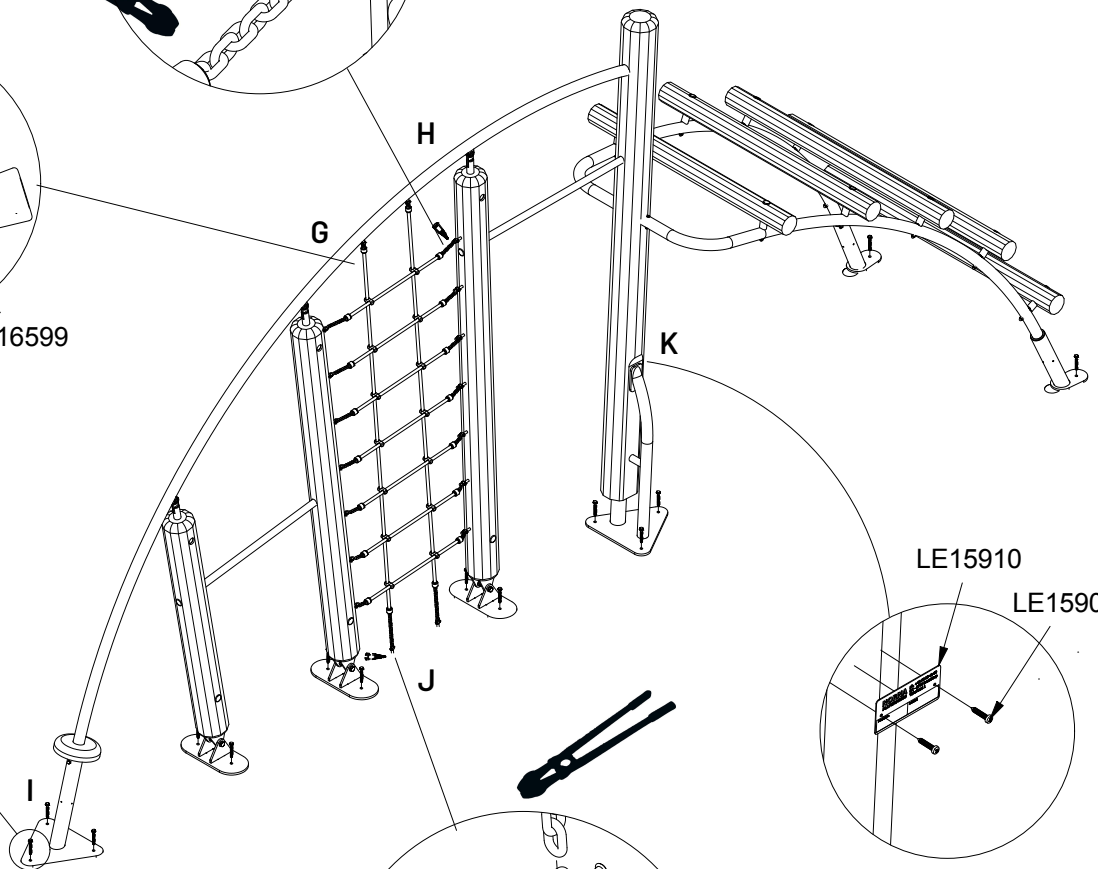
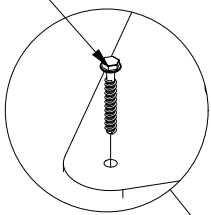
QTY	PART NO	DESCRIP.
5	LE15252	M16x200 mm
1	LE16054	M10 cap nut
3	LE16056	M12 cap nut
4	LE16062	M10x14 mm
1	LE16063	M10x90 mm
3	LE16071	12x40 mm
5	LE16152	M16 - Ø30 mm
6	LE16167	M12 - Ø32 mm
5	LE16556	Ø42/38mm
1	SR00068	Ø38x1100mm, bar
1	SR00070	Ø38x925mm, bar



EN 1992-1-1

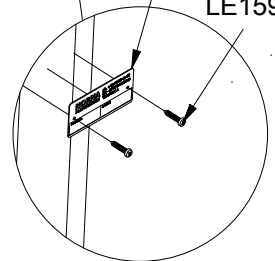


LE16406



LE15910

LE15901



Parts List		
QTY	PART NO	DESCRIP.
18	LE13100	Shackle
2	LE15901	3x16, PH
1	LE15910	Name tag
2	LE16048	Eyebolt 10x120mm
2	LE16064	Ø12, anchor
14	LE16406	10x85 mm
18	LE16502	Spacer 6mm
2	LE16599	Sealtite 970 1,5 ml (Glue)
1	S11991	Taifun net

