

HONDA

INSTALLATION INSTRUCTIONS

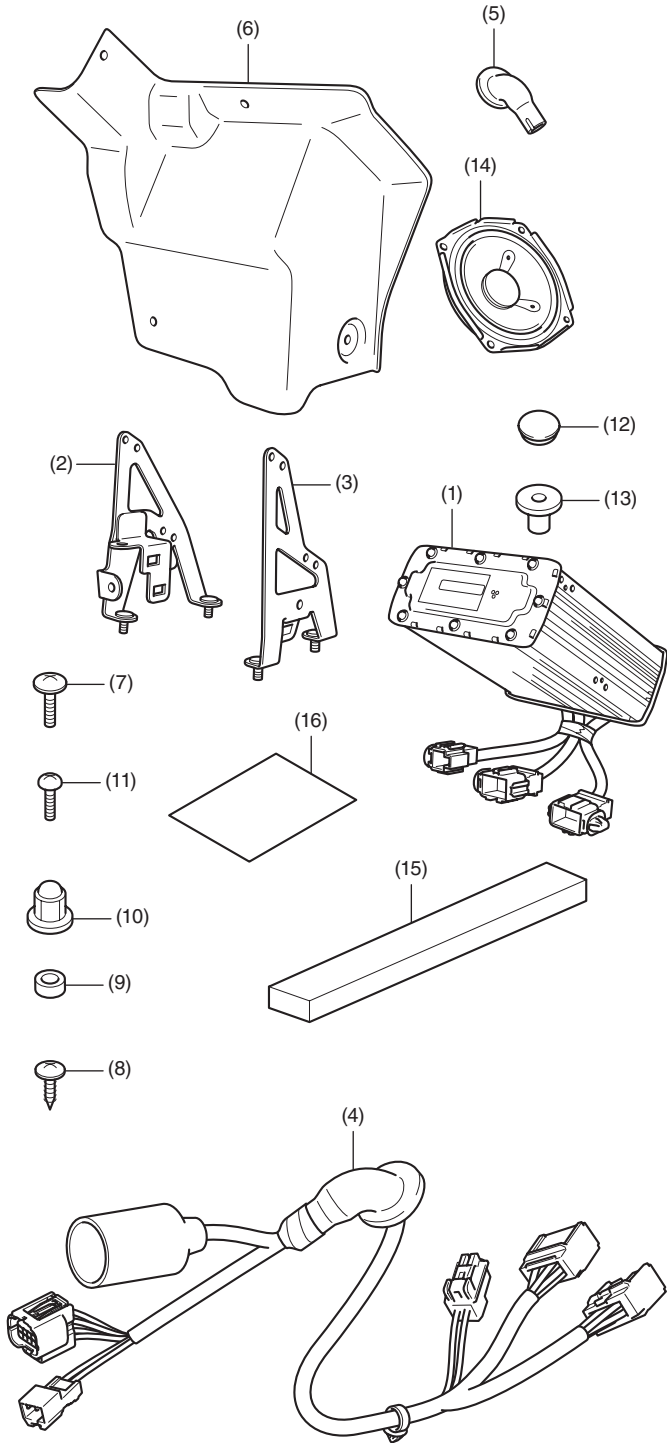
Accessory
POWER AMP & ATTACHMENT
P/N 08A83-MKC-A00

Application
GL1800B/BD

Publication No.
MII
 Issue Date
October 2017

Honda Dealer: Please give a copy of these instructions to your customer.

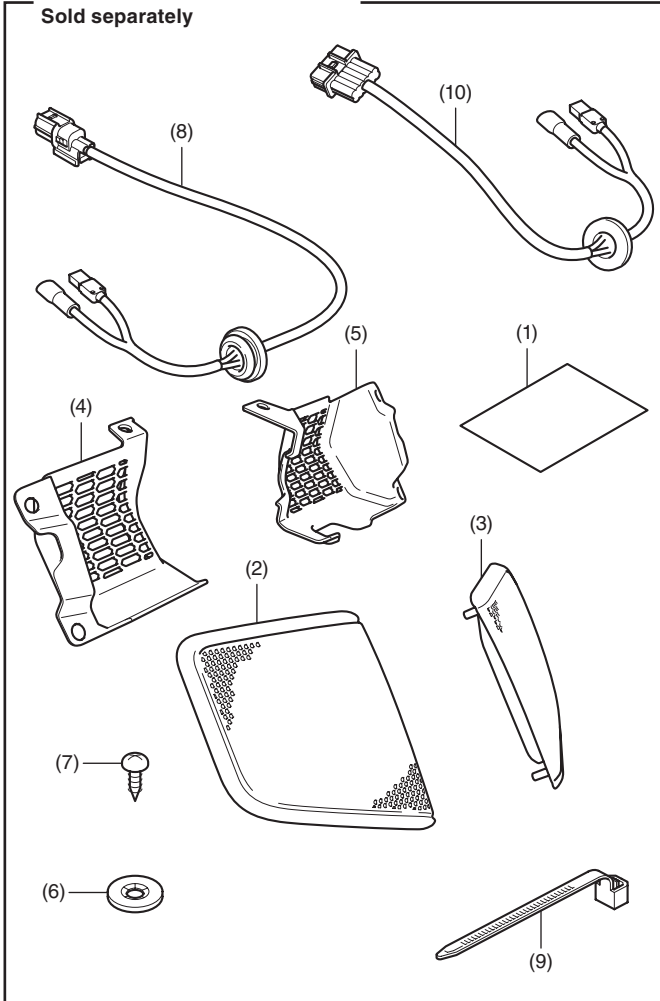
PARTS LIST



No.	Description	Qty
(1)	Amplifier unit	1
(2)	Stay A	1
(3)	Stay B	1
(4)	Sub harness	1
(5)	Grommet	3
(6)	Cover	1
(7)	5 mm screw (long)	4
(8)	5 mm screw (short)	2
(9)	Collar	9
(10)	5 mm nut	5
(11)	4 mm screw	9
(12)	Hole plug	1
(13)	Well nut	1
(14)	Speaker	4
(15)	Sponge seal rubber	1
(16)	Installation Instructions URL	1

SPEAKER REAR ATTACHMENT

Sold separately



No.	Description	Qty
(1)	Installation Instructions URL	1
(2)	Speaker right grill	1
(3)	Speaker left grill	1
(4)	Speaker right cover	1
(5)	Speaker left cover	1
(6)	Speed nut	9
(7)	5 mm screw	7
(8)	Right sub harness	1
(9)	Wire tie	4
(10)	Left sub harness	1

TOOLS AND SUPPLIES REQUIRED

Box-end wrench (8 mm)
 Open-end wrench (8 mm)
 Phillips ® screwdriver
 Electric drill
 Drill bit (4, 6 and 10 mm)
 Hole saw (30 mm)
 File
 Nippers
 Synthetic detergent solution
 (Water : Synthetic detergent / 100 : 1)
 Isopropyl alcohol
 Scale
 Scissors
 Shop towel
 Torque wrench

TORQUE CHART

Tighten all screws, bolts, and nuts to their specified torque values. Refer to the Service Manual for the torque values of the removed parts.

Item	N-m	kgf-m	lbf-ft
4 mm screw	1	0.1	0.7
5 mm screw	4.2	0.4	3.1
5 mm nut	5.2	0.5	3.8

INSTALLATION

⚠ CAUTION

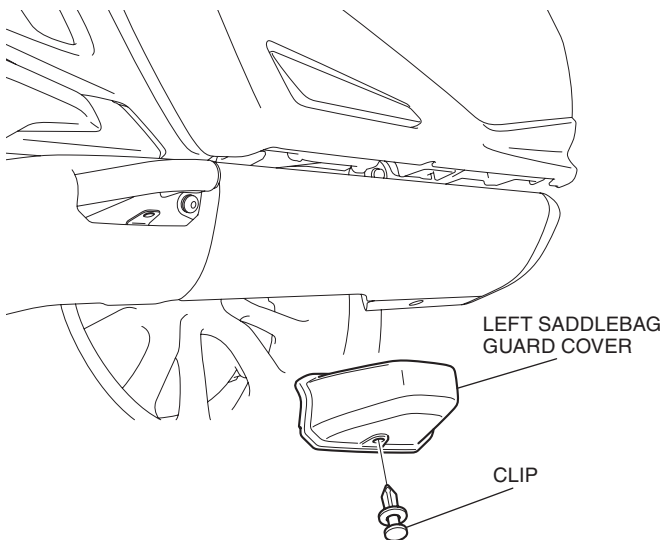
- To prevent burns, allow the engine, exhaust system, radiator, etc., to cool before installing the accessory.

NOTE:

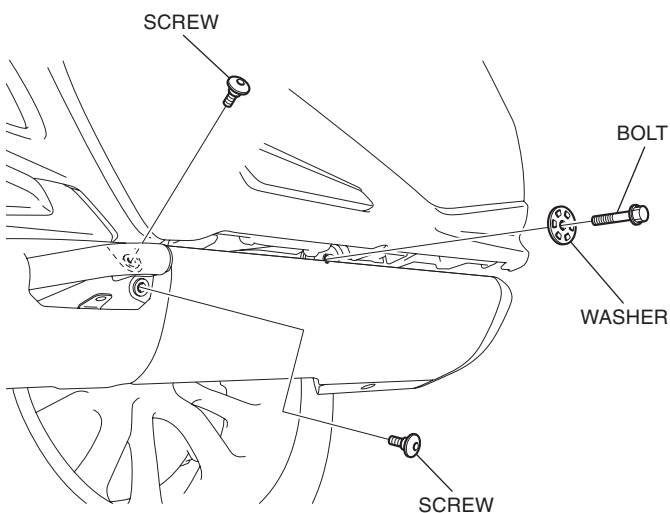
- Heat the bonding surfaces with a hair dryer if the ambient air temperature is below 70°F (21°C).
- The adhesive reaches full strength in 72 hours. Wait at least 24 hours before riding your motorcycle.
- Disconnect the negative (-) cable from the battery before installing this accessory.
- The memories of the clock will be erased when you disconnect the battery. Reset the memories after reconnecting the battery.
- Reinstall the removed parts on the motorcycle and make sure that the wires and harnesses are not pinched.

1. Remove the left saddlebag guard cover as shown.

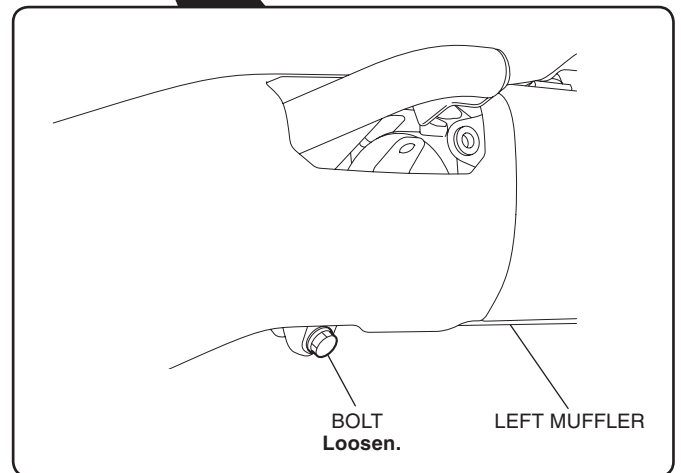
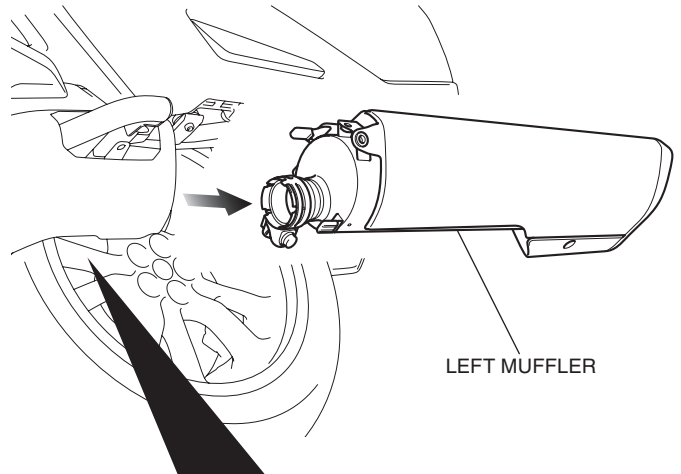
<Left side>



2. Remove the parts as shown.



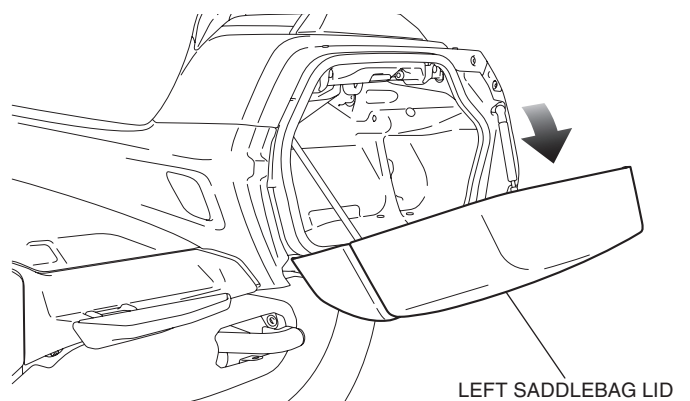
3. Loosen the bolt, then remove the left muffler as shown.



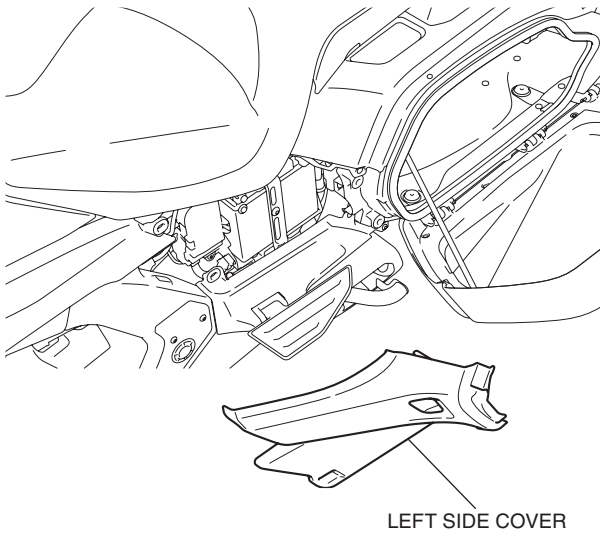
4. Open the left saddlebag lid as shown.

- Repeat on the right side.

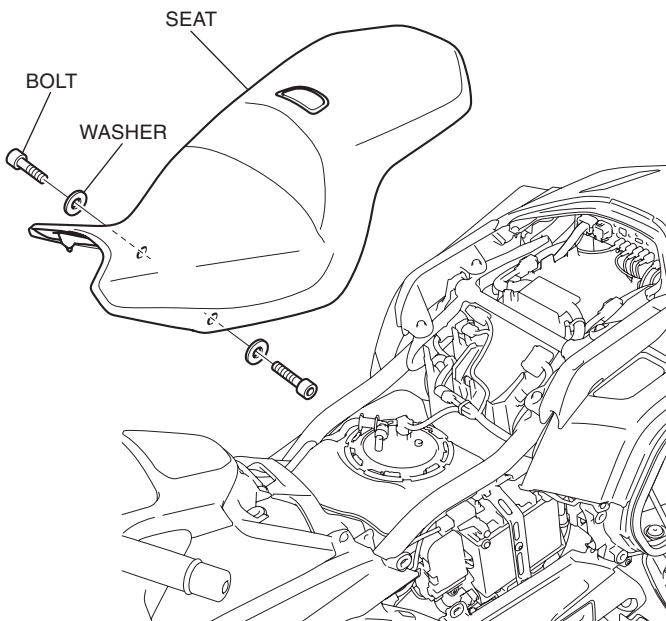
<Left side>



5. Remove the left side cover as shown, and disconnect the negative (-) cable of the battery.

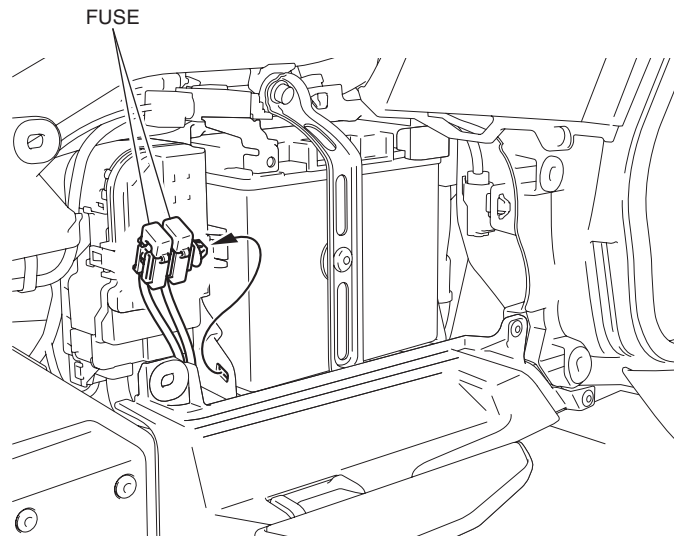


6. Remove the right side cover in the same manner as the left side.
7. Remove the seat as shown.

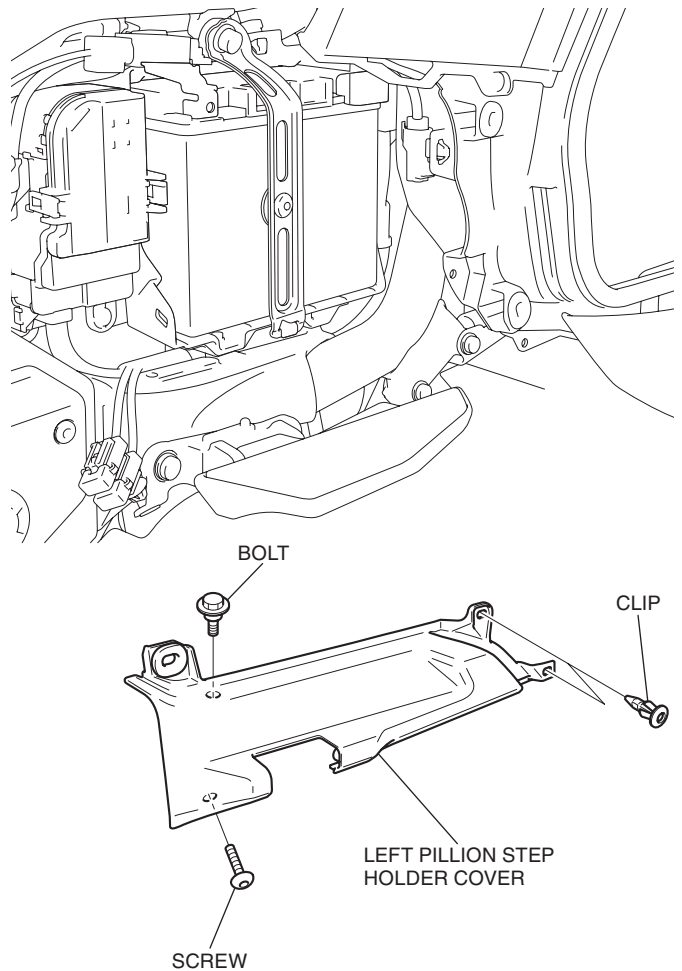


8. Remove the fuses as shown.

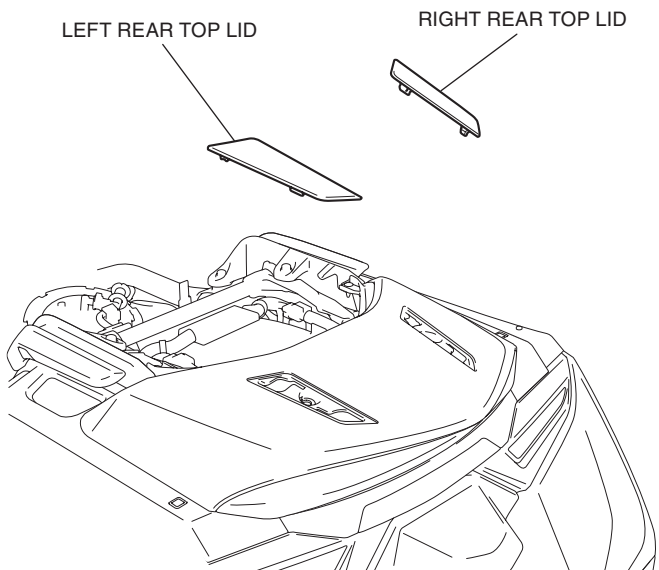
<Left side>



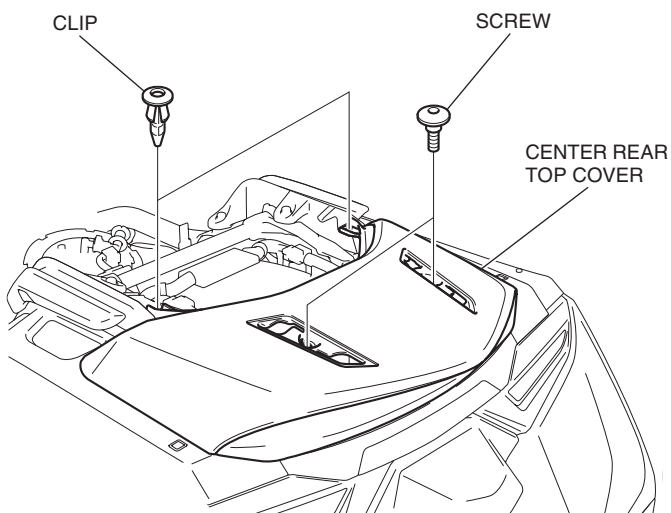
9. Remove the left pillion step holder cover as shown.
• Repeat on the right side.



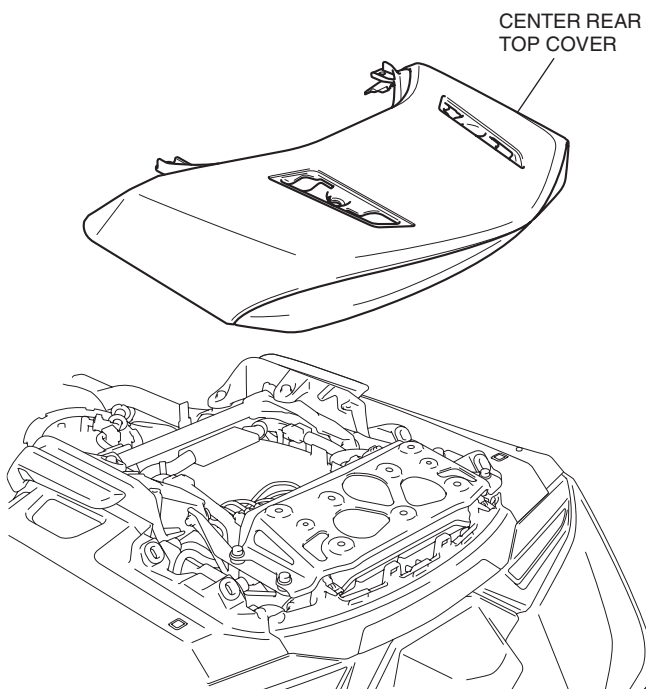
10. Remove the right and left rear top lid as shown.



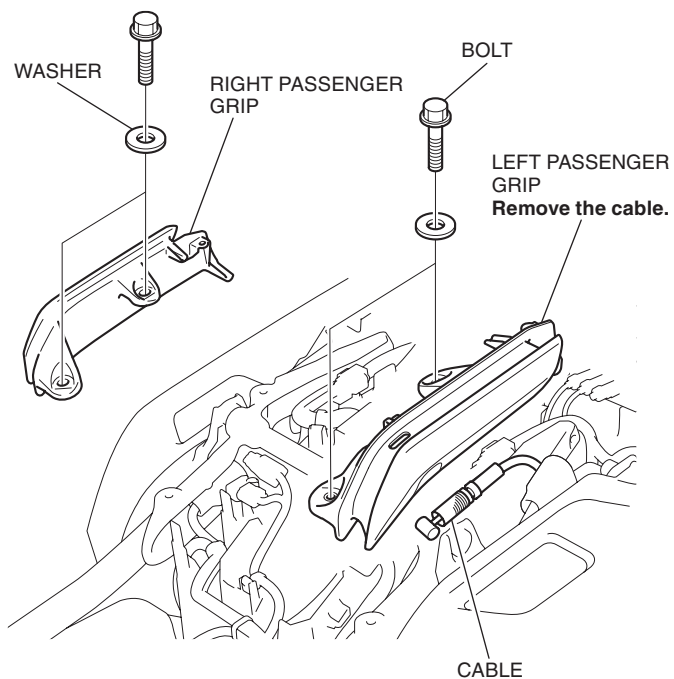
11. Remove the parts as shown.



12. Remove the center rear top cover as shown.

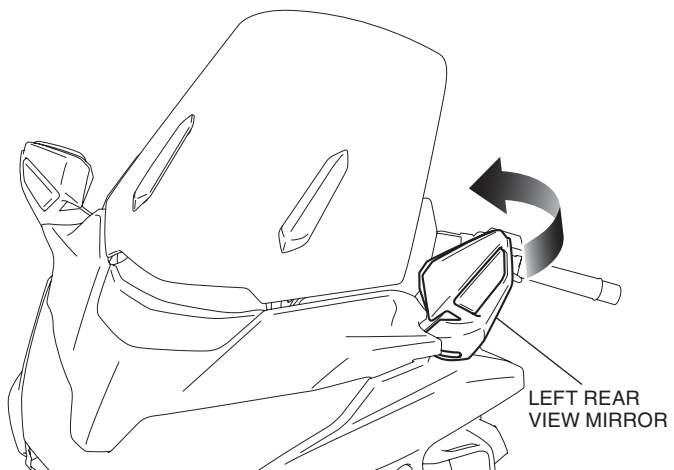


13. Remove the right and left passenger grip as shown.



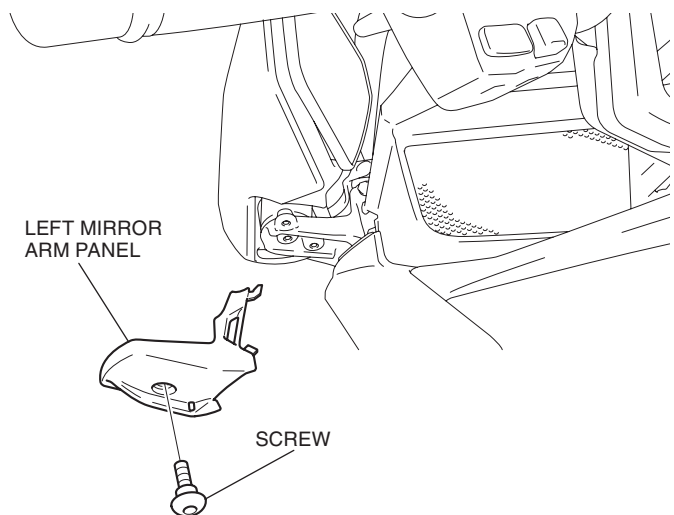
14. Fold down the left rear view mirror backward as shown.

<Left side>

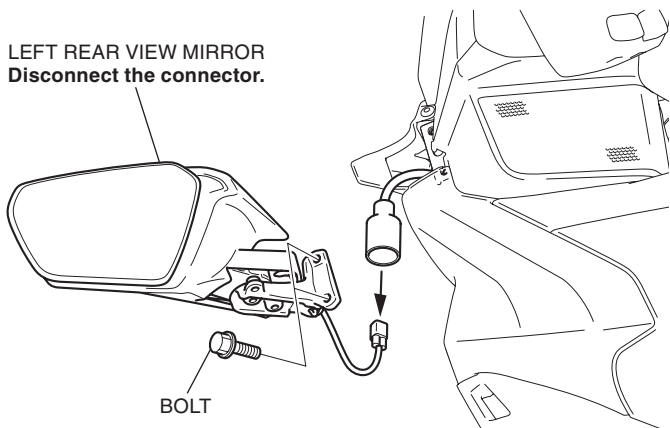


15. Remove the left mirror arm panel as shown.

<Left side>



16. Remove the left rear view mirror as shown.

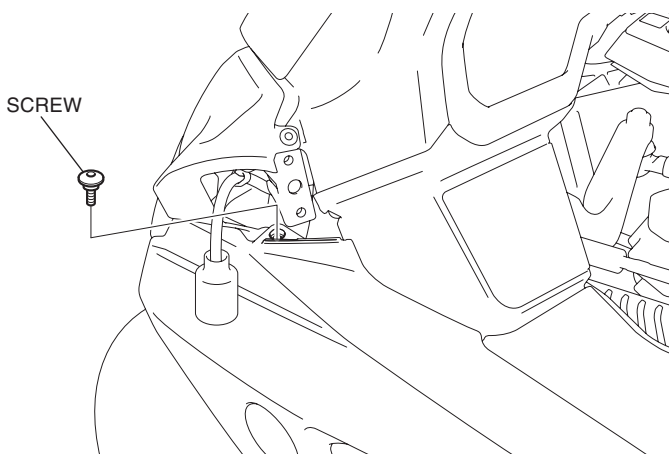


17. Remove the right mirror arm panel and right rear view mirror in the same manner as the left side.

18. Remove the screw as shown.

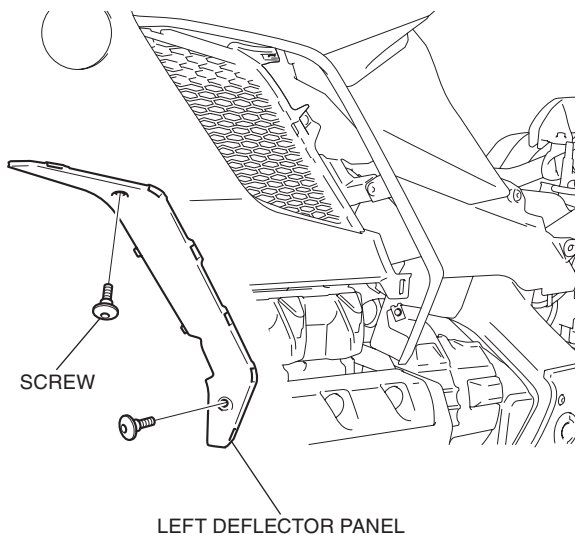
- Repeat on the right side.

<Left side>

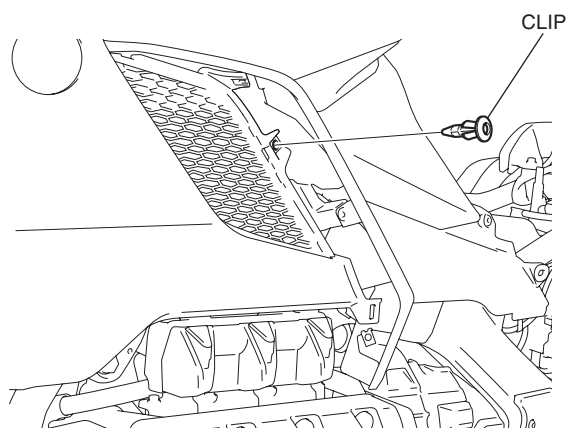


19. Remove the left deflector panel as shown.

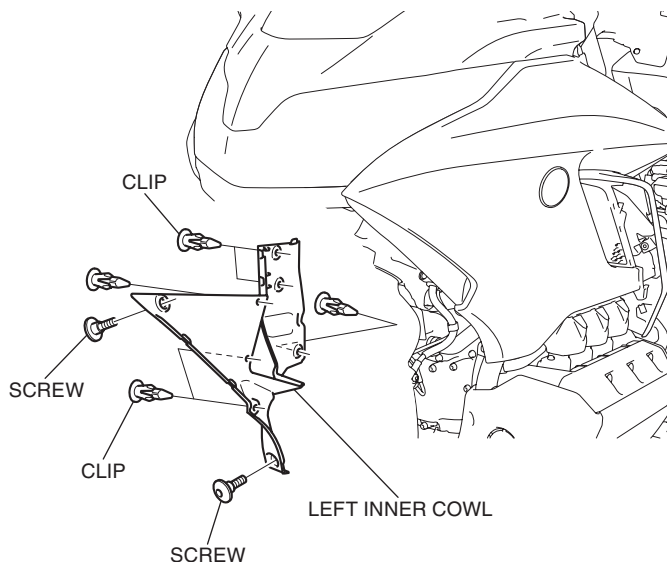
<Left side>



20. Remove the clip as shown.

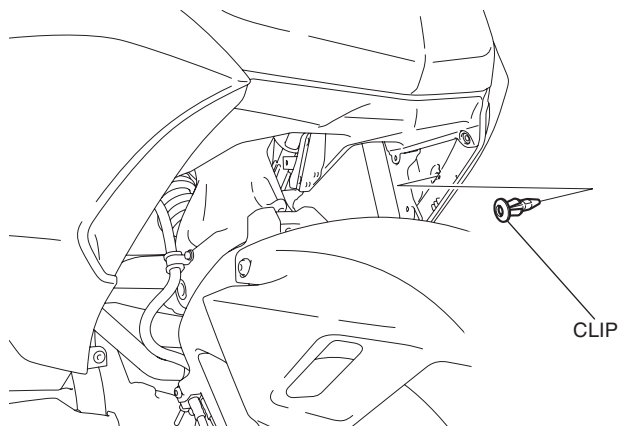


21. Remove the left inner cowl as shown.



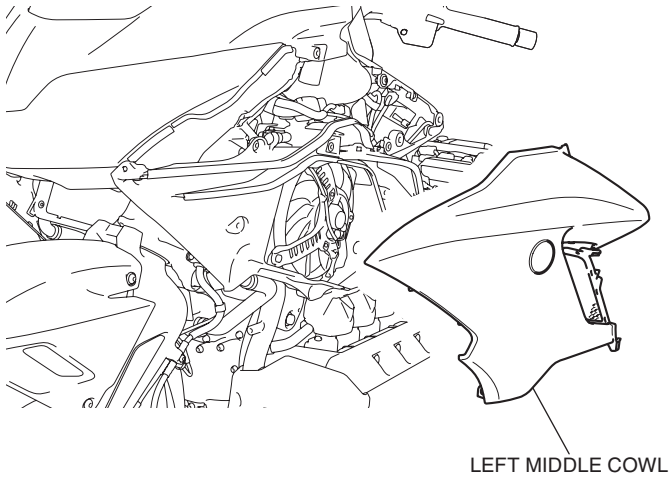
22. Remove the clip as shown.

<Left side>



23. Remove the left middle cowl as shown.

<Left side>

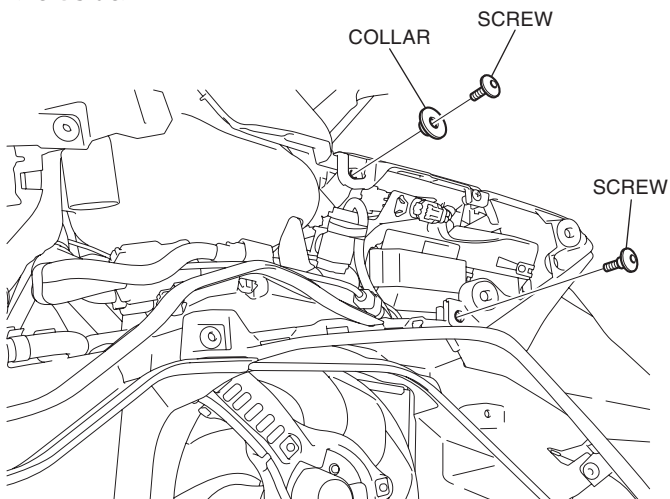


24. Remove the right deflector panel, right inner cowl and right middle cowl in the same manner as the left side.

25. Remove the parts as shown.

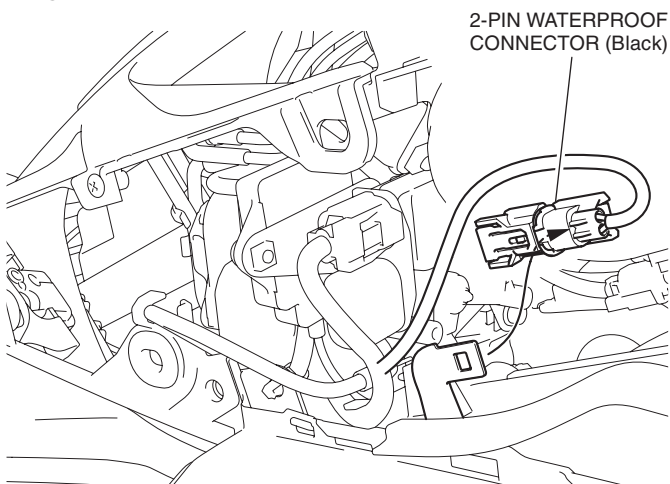
- Repeat on the right side.

<Left side>

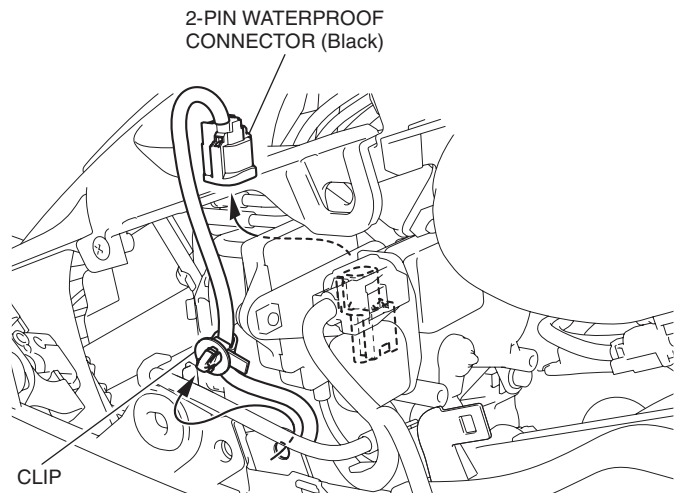


26. Remove the connector as shown.

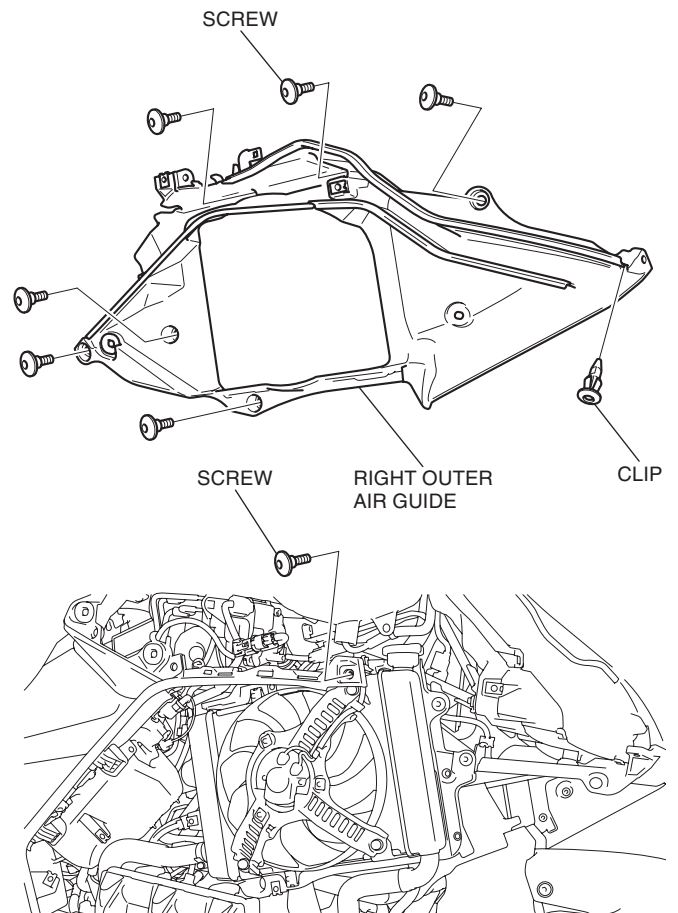
<Right side>



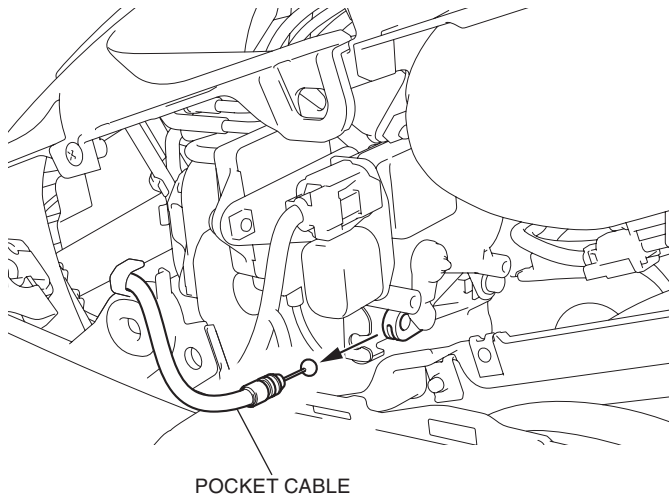
27. Remove the clip and disconnect the connector as shown.



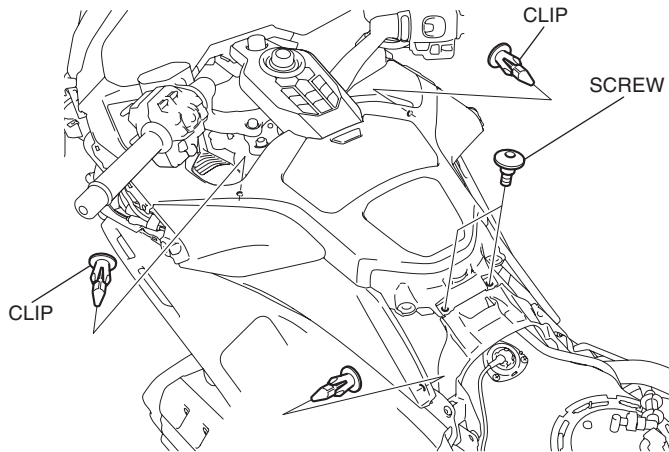
28. Remove the right outer air guide as shown.



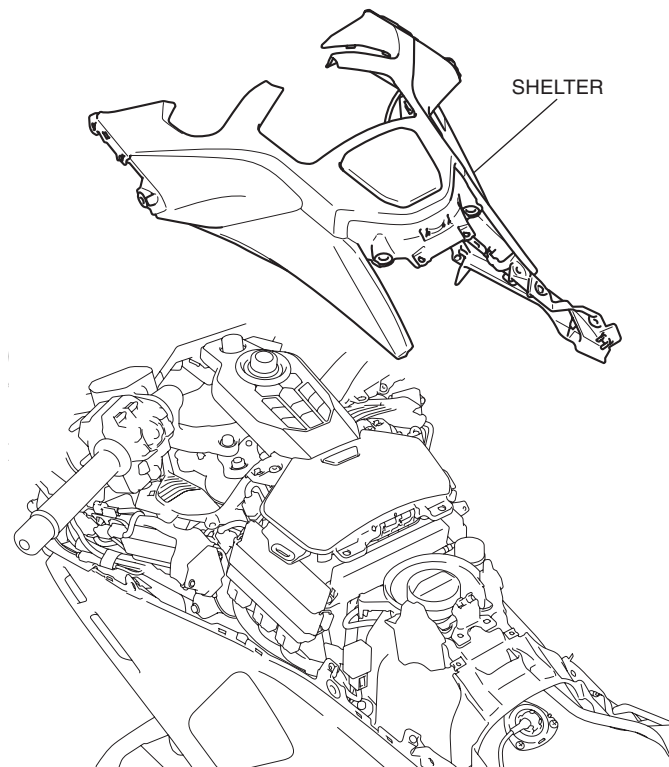
29. Remove the pocket cable as shown.



30. Remove the parts as shown.



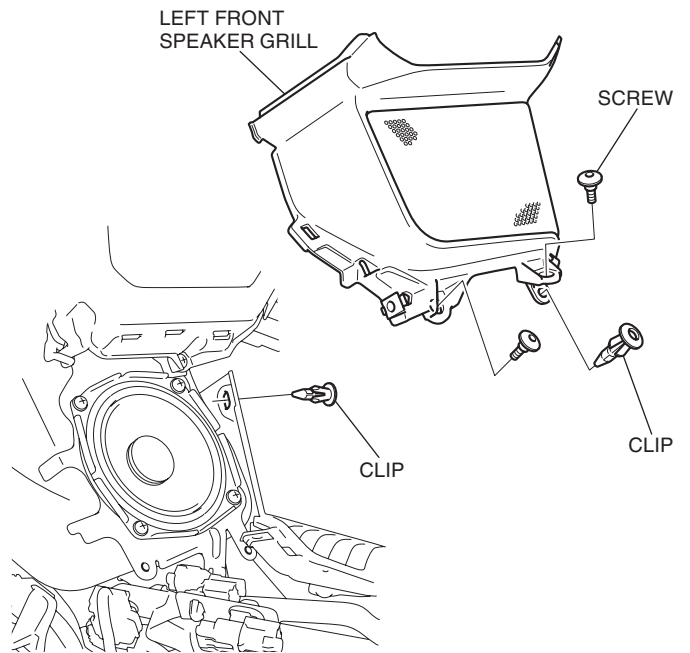
31. Remove the shelter as shown.



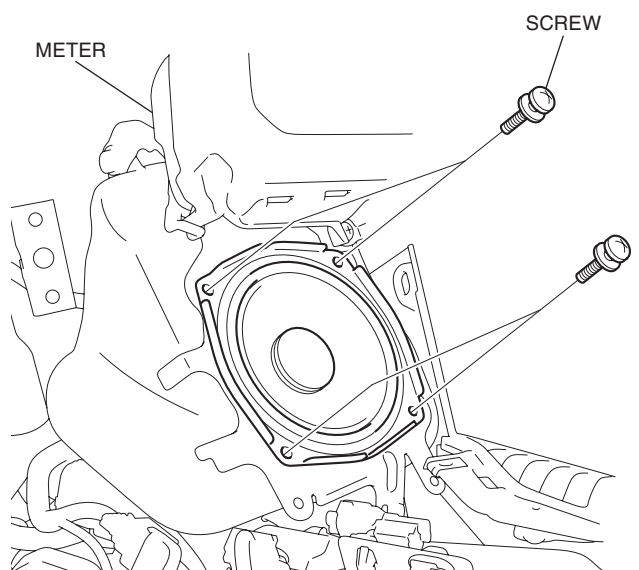
32. Remove the left front speaker grill as shown.

- Repeat on the right side.

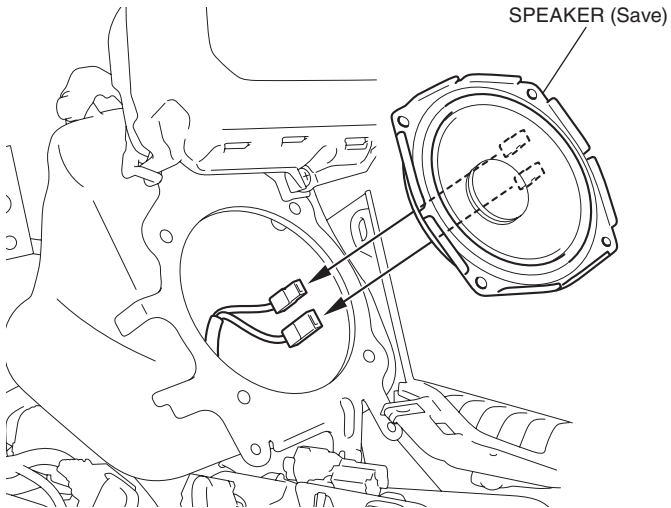
<Left side>



33. Remove the screws as shown.



34. Remove the speaker as shown.

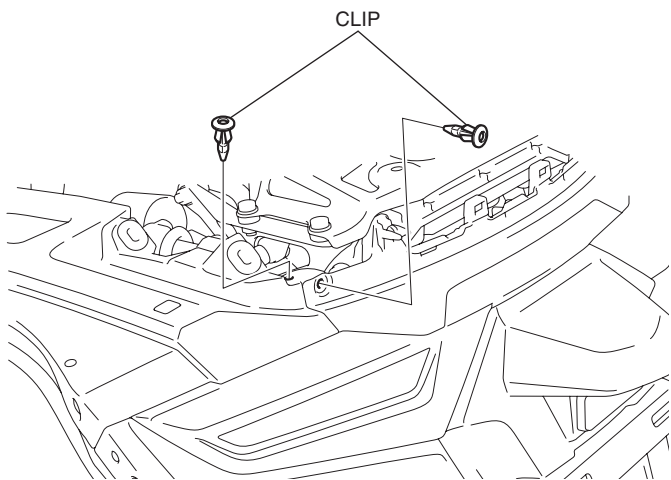


35. Remove the right side speaker in the same manner as the left side.

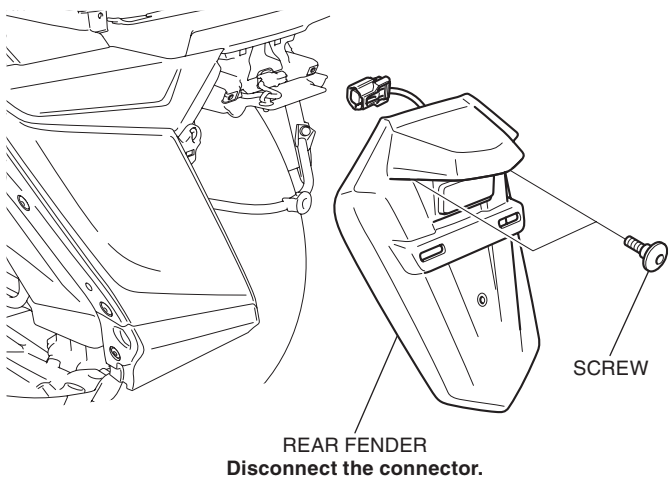
36. Remove the clips as shown.

- Repeat on the right side.

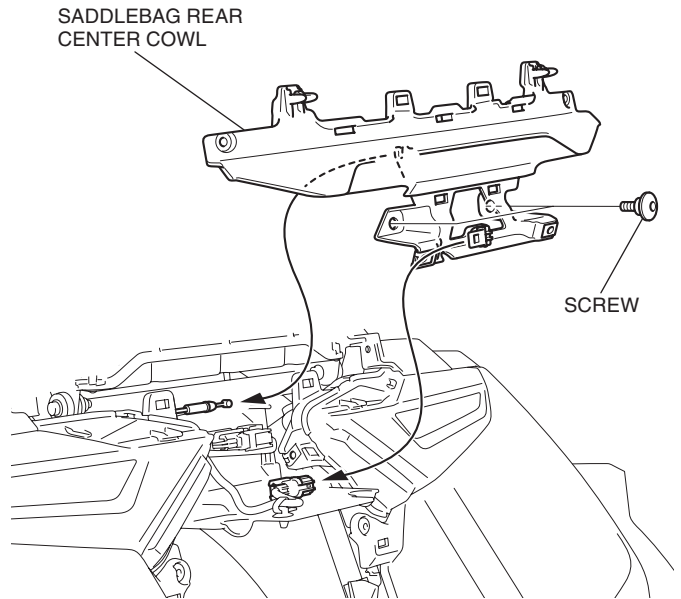
<Left side>



37. Remove the rear fender as shown.



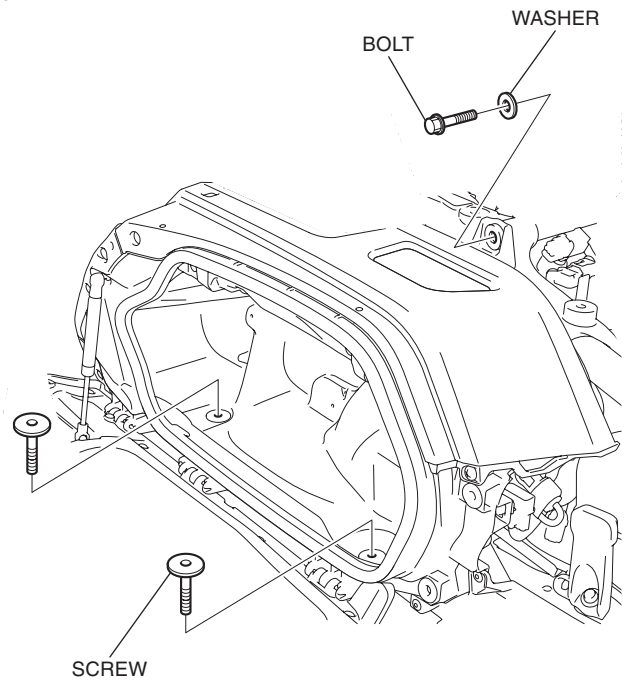
38. Remove the saddlebag rear center cowl as shown.



39. Remove the parts as shown.

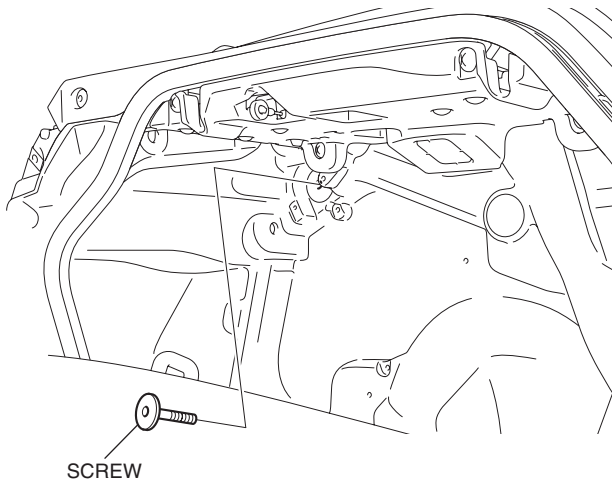
- Repeat on the left side.

<Right side>

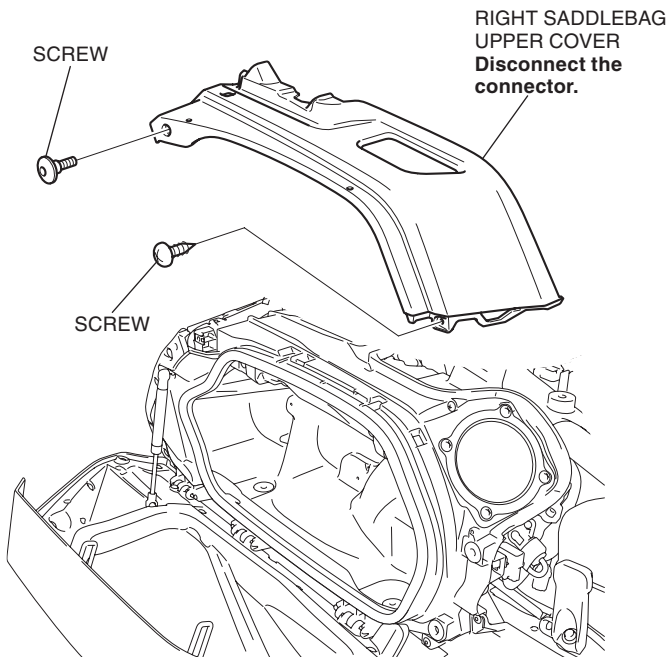


40. Remove the screw as shown.

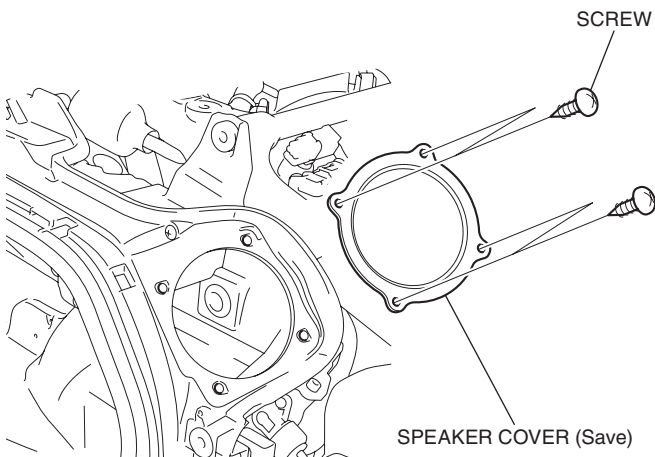
- Repeat on the left side.



41. Remove the right saddlebag upper cover as shown.



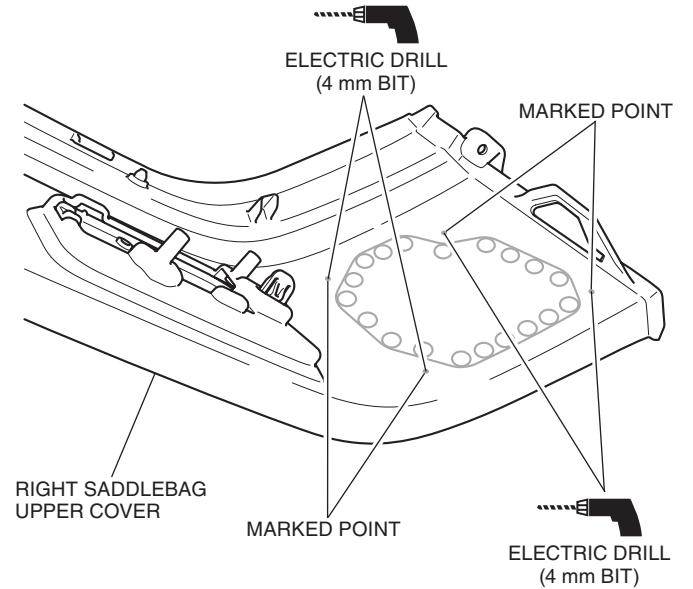
42. Remove the speaker cover as shown.



43. Remove the left saddlebag upper cover and speaker cover in the same manner as the right side.

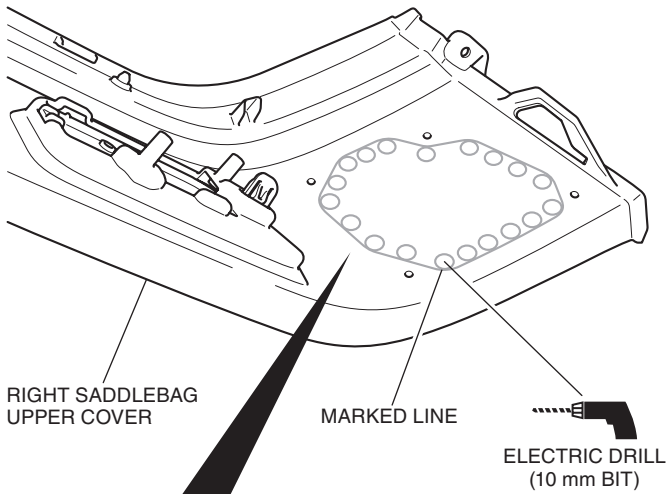
44. Drill at the marked points of the right saddlebag upper cover as shown.

- Remove the any burrs from the edge of the hole.

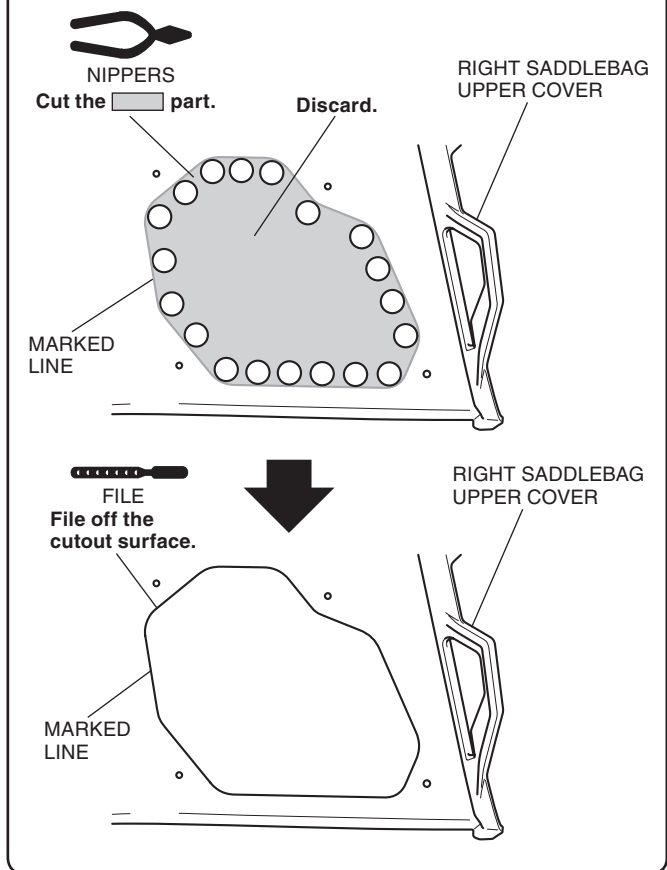


45. Drill at the marked lines of the right saddlebag upper cover as shown.

- Drill holes at the center of the marked lines.

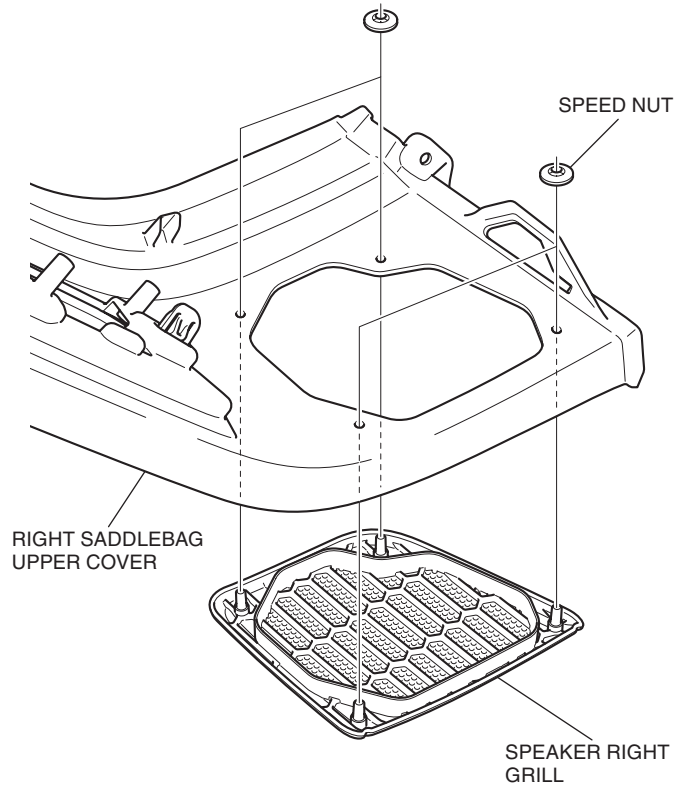


After cutting, finish with a file.



46. Cut the left saddlebag upper cover in the same manner as the right side.

47. Install the speaker right grill as shown.

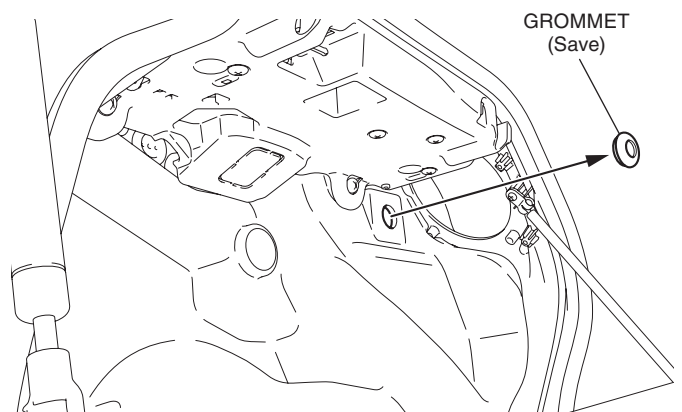


48. Install the speaker left grill in the same manner as the right side.

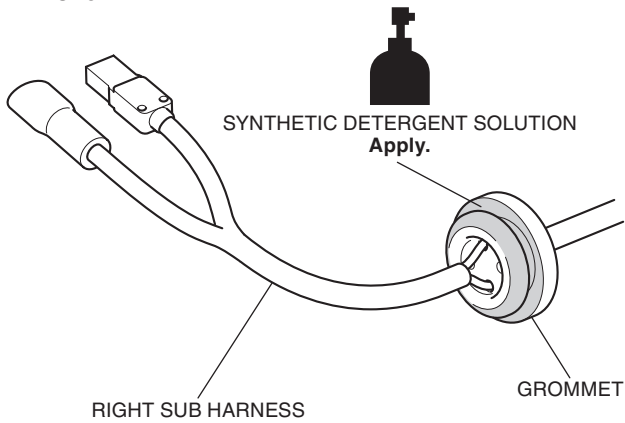
49. Remove the grommet as shown.

- Repeat on the left side.

<Right side>

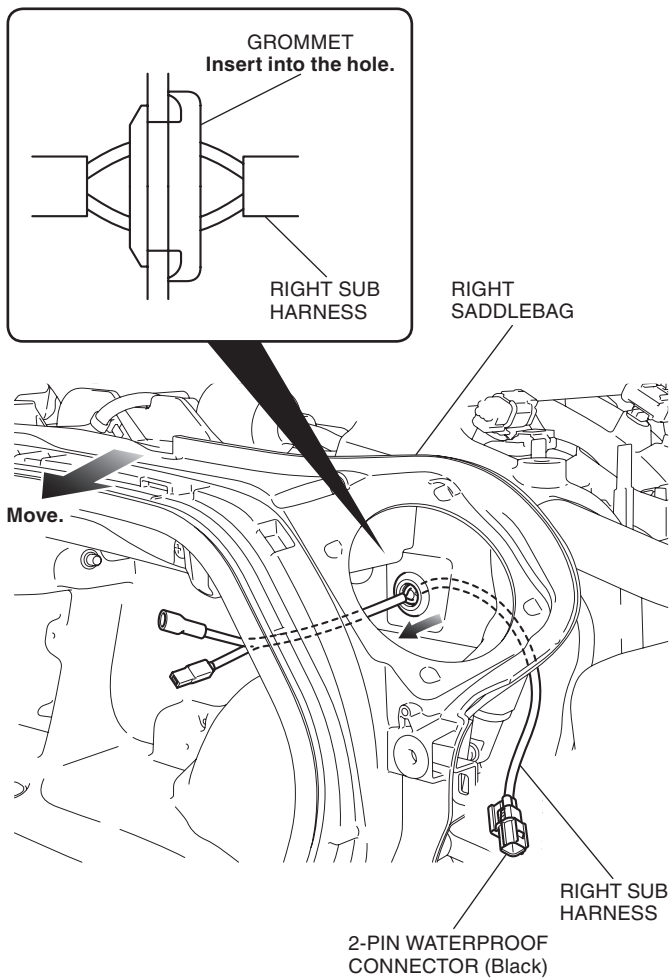


50. Apply synthetic detergent solution to the position shown.

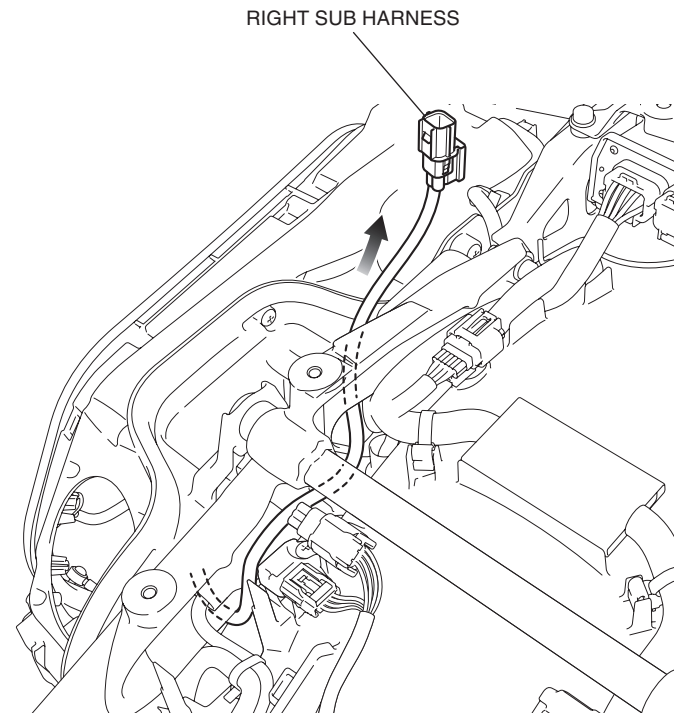


51. Move the right saddlebag and route the right sub harness as shown.

- Repeat on the left side.

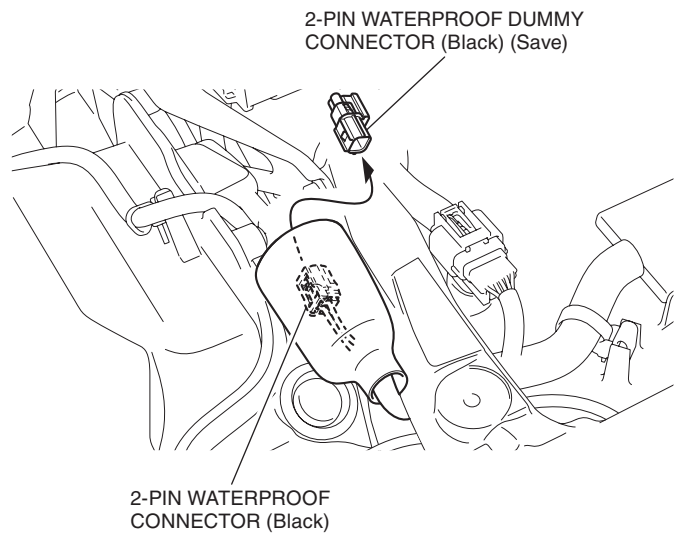


52. Route the right sub harness as shown.

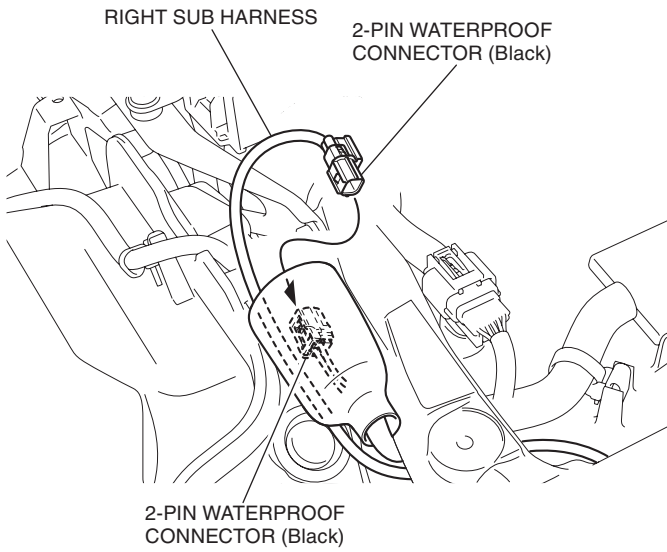


53. Install the right saddlebag in the reverse order of removal.

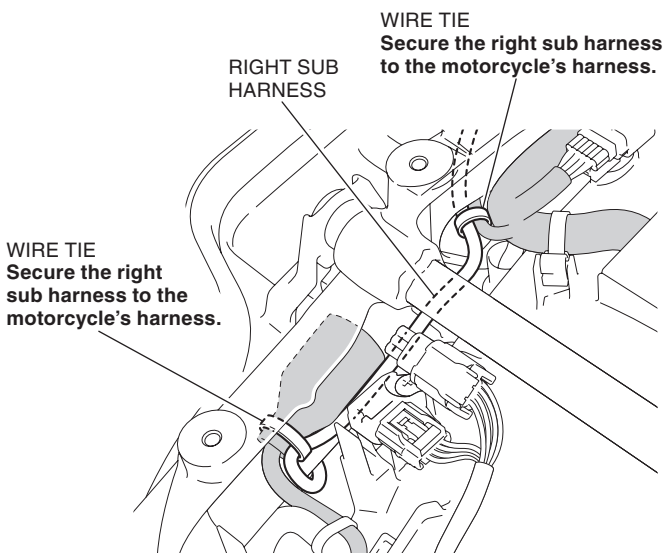
54. Remove the dummy connector as shown.



55. Connect the right sub harness as shown.

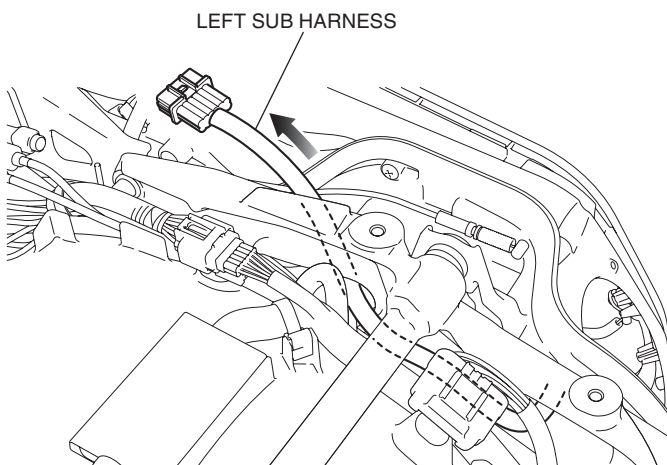


56. Secure the right sub harness with the wire ties as shown.



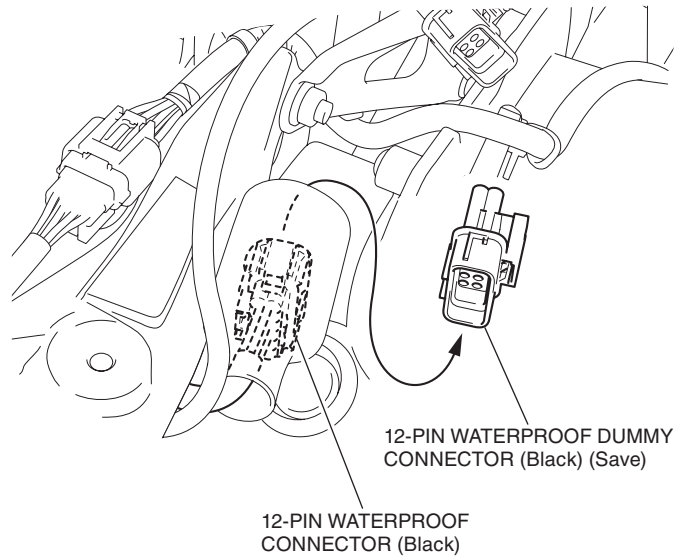
57. Route the left sub harness as shown.

<Left side>

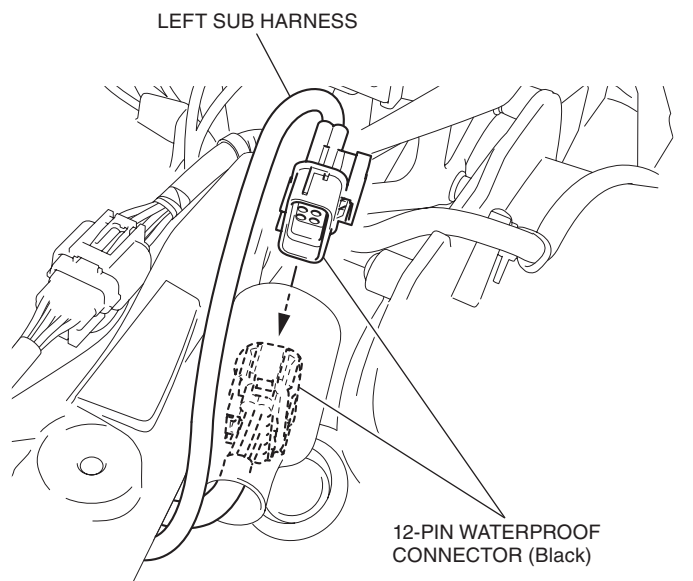


58. Install the left saddlebag in the reverse order of removal.

59. Remove the dummy connector as shown.

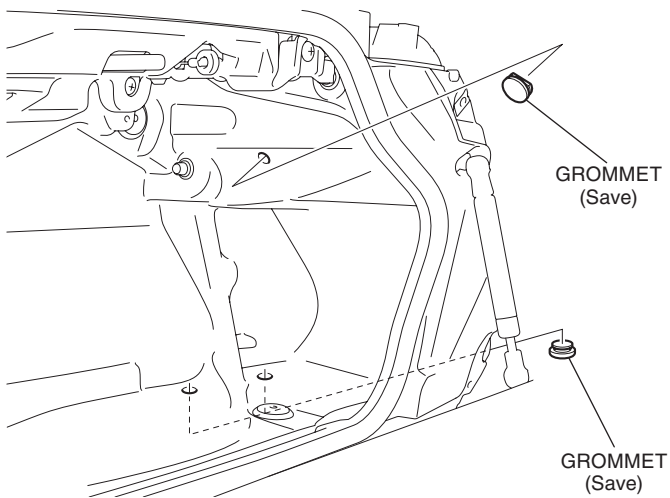


60. Connect the left sub harness as shown.

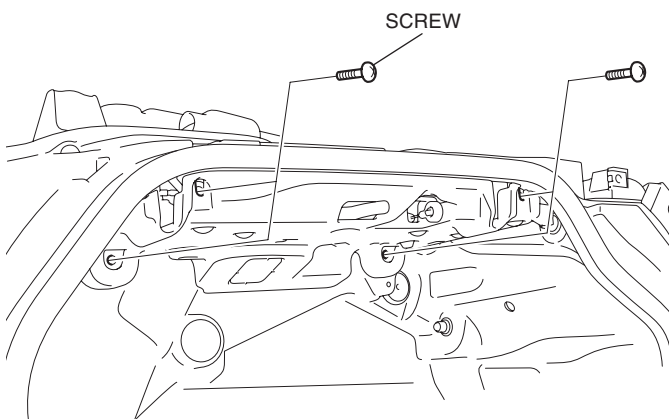


61. Remove the grommets as shown.

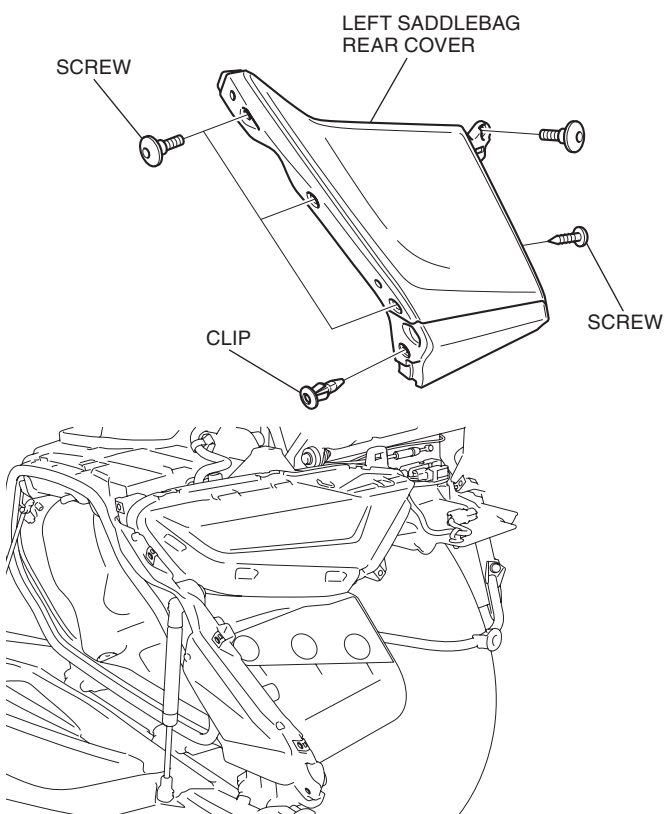
<Left side>



62. Remove the screws as shown.

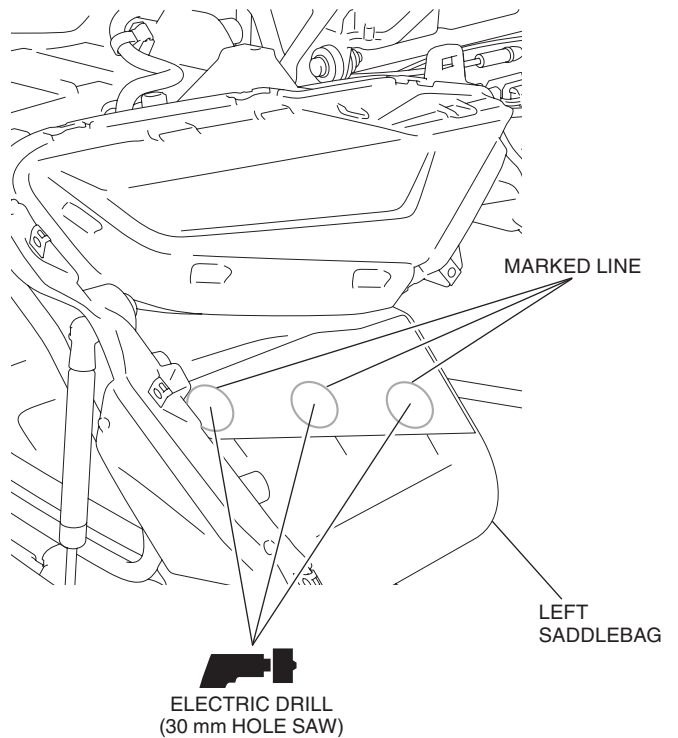


63. Remove the left saddlebag rear cover as shown.



64. Drill at the marked lines of the left saddlebag as shown.

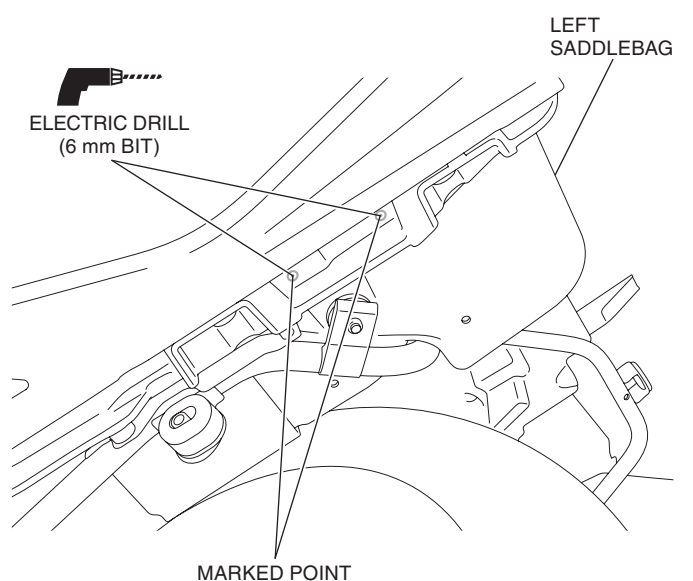
- Drill holes at the center of the marked lines.
- Remove the any burrs from the edge of the hole.



65. Drill at the marked points of the left saddlebag as shown.

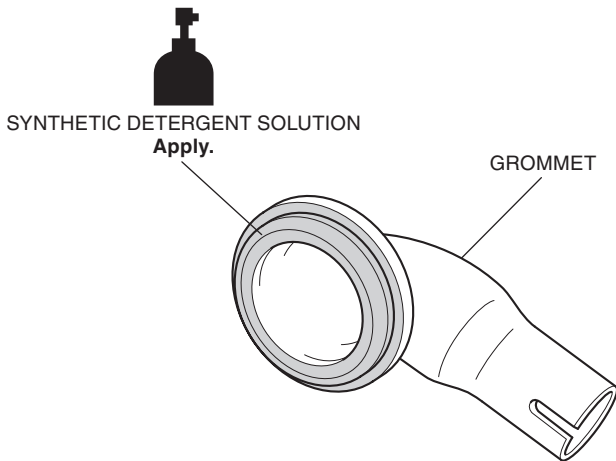
- Remove the any burrs from the edge of the hole.

<Under side>

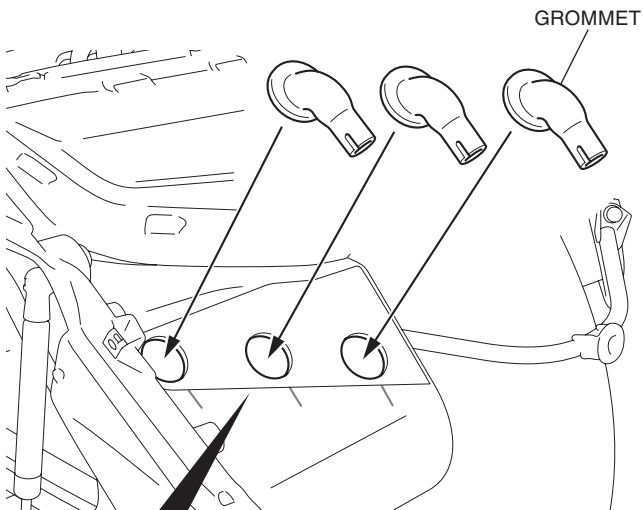


66. Apply synthetic detergent solution to the position shown.

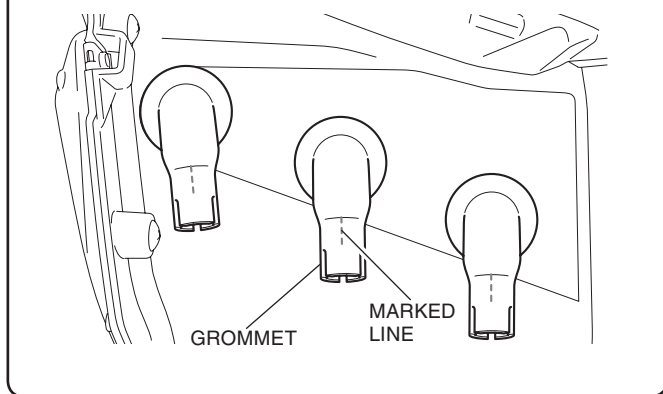
- Perform this step for all three grommets.



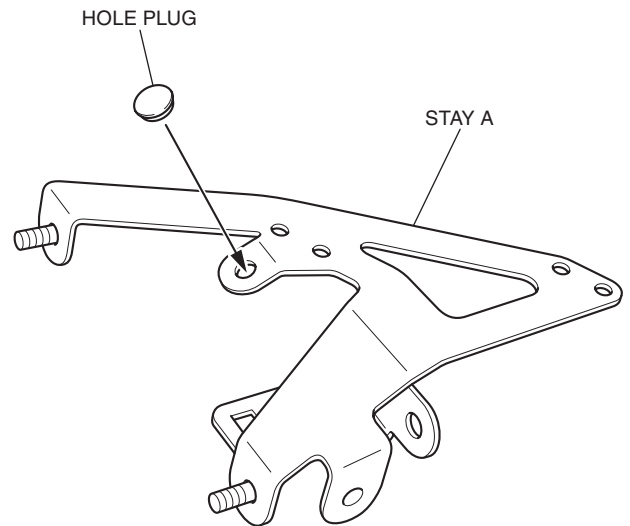
67. Install the grommets as shown.



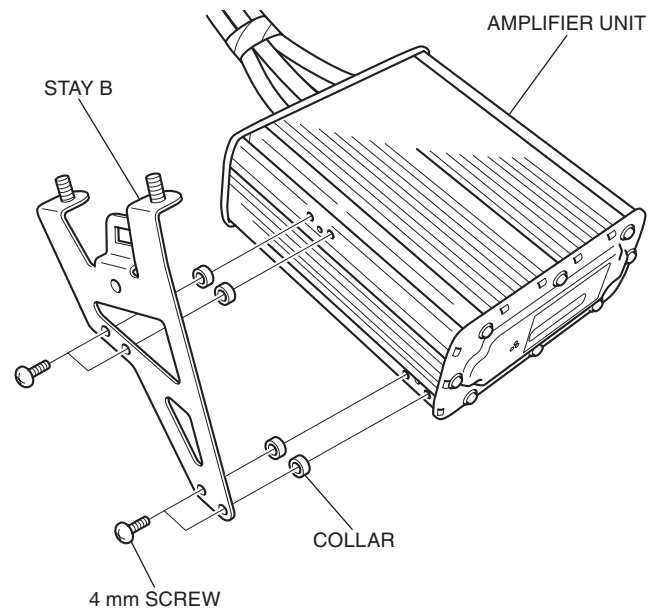
Align the end of grommet with the marked line as shown.



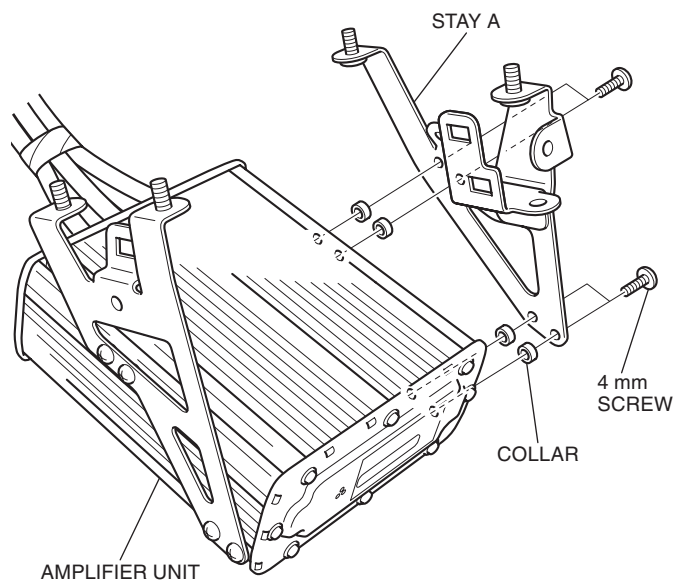
68. Install the hole plug as shown.



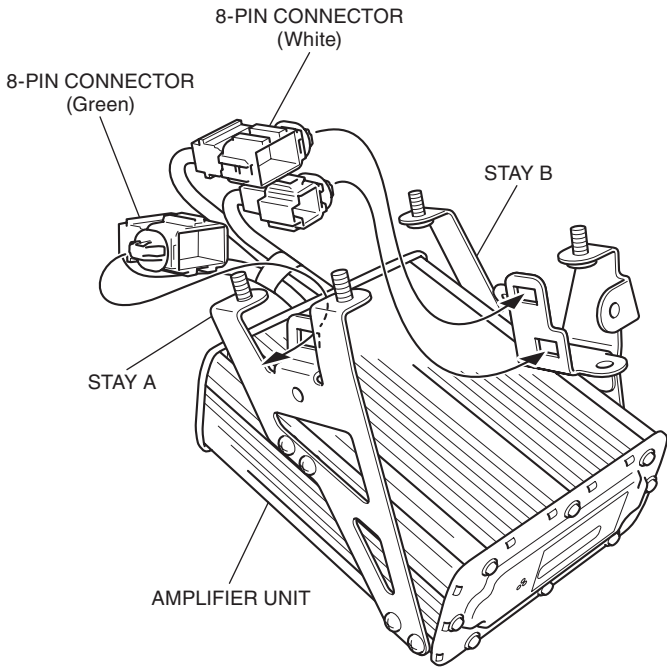
69. Install the stay B as shown.



70. Install the stay A as shown.

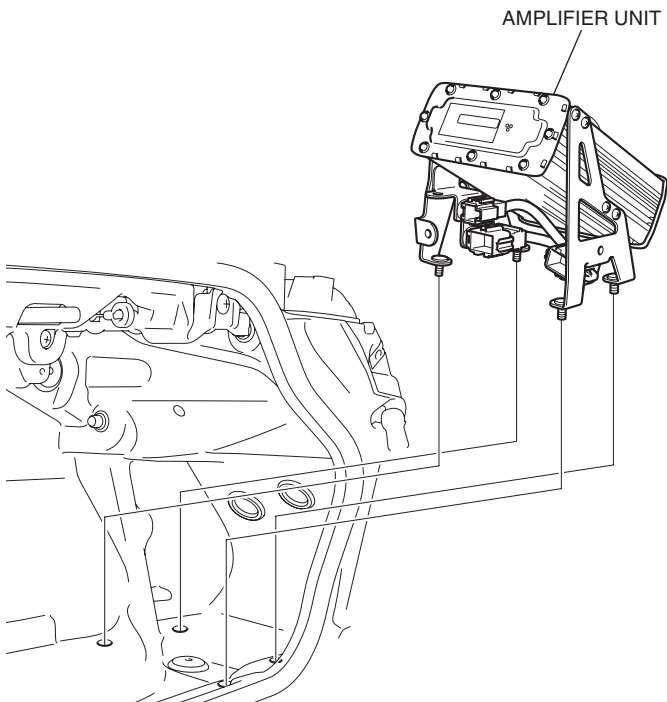


71. Secure the connectors as shown.



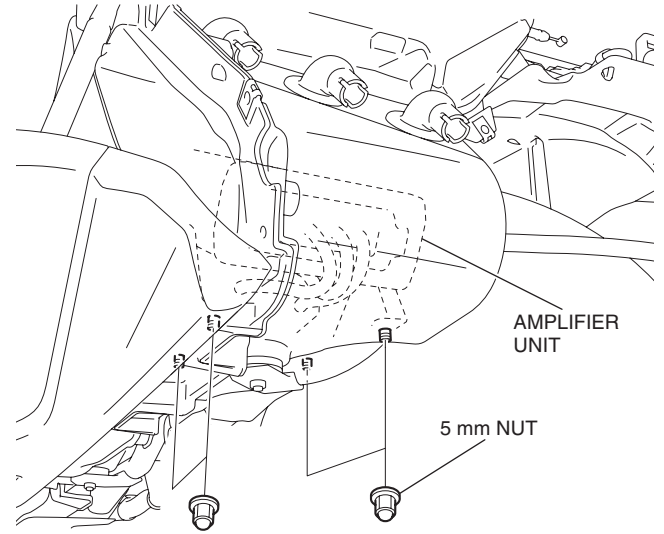
72. Install the amplifier unit as shown.

<Left side>



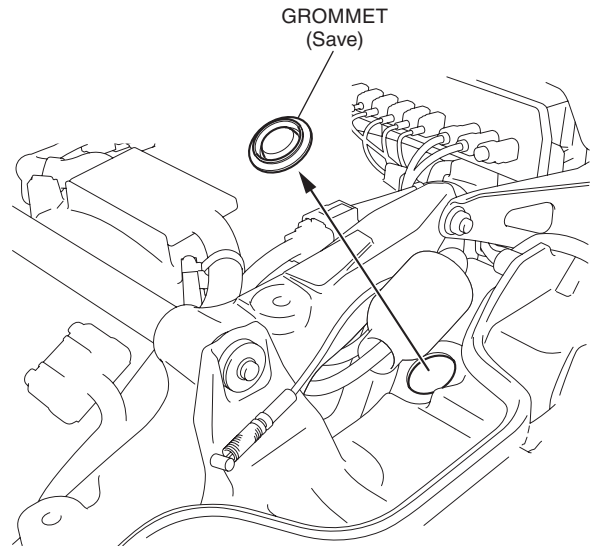
73. Install the 5 mm nuts as shown.

<Left side>

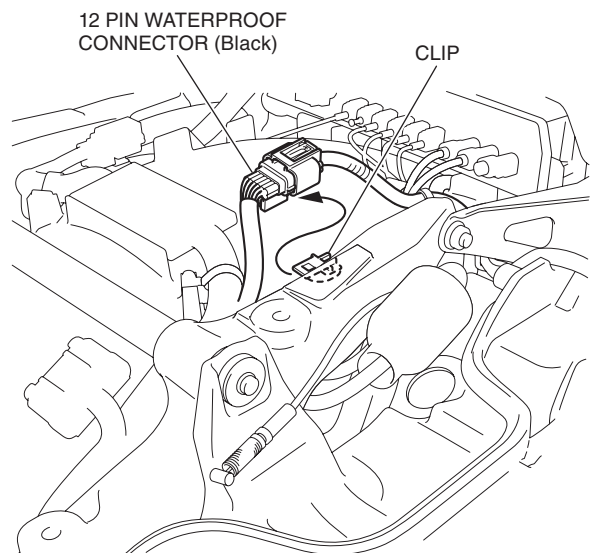


74. Remove the grommet as shown.

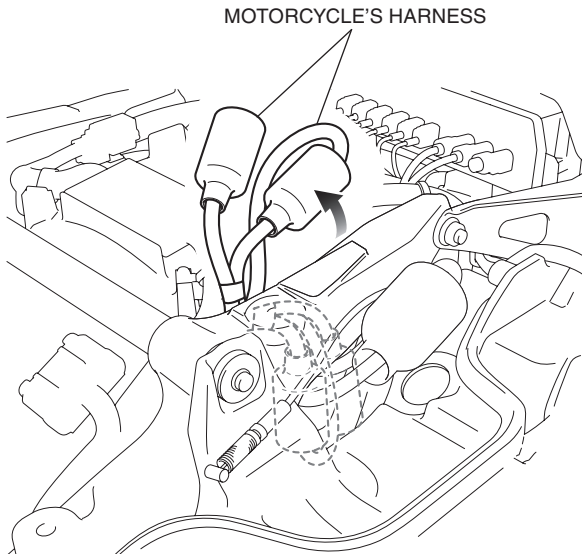
<Left side>



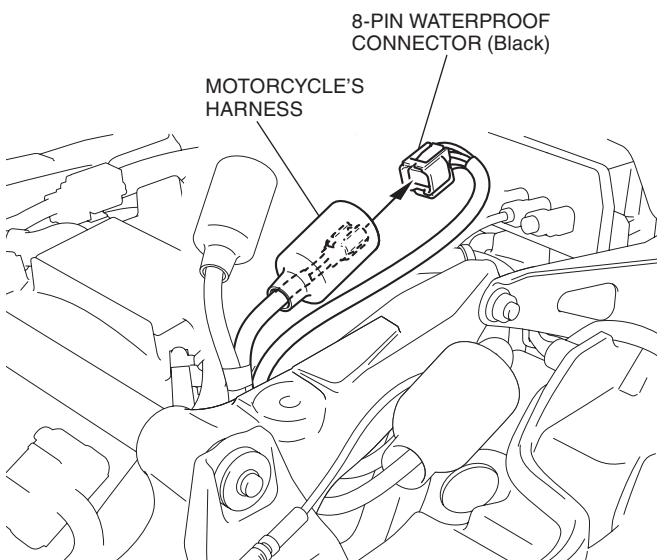
75. Remove the connector as shown.



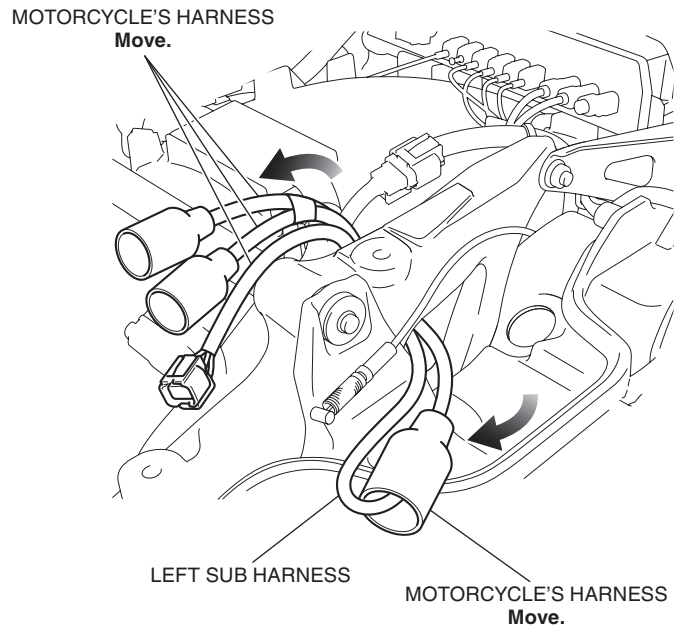
76. Move the motorcycle's harnesses as shown.



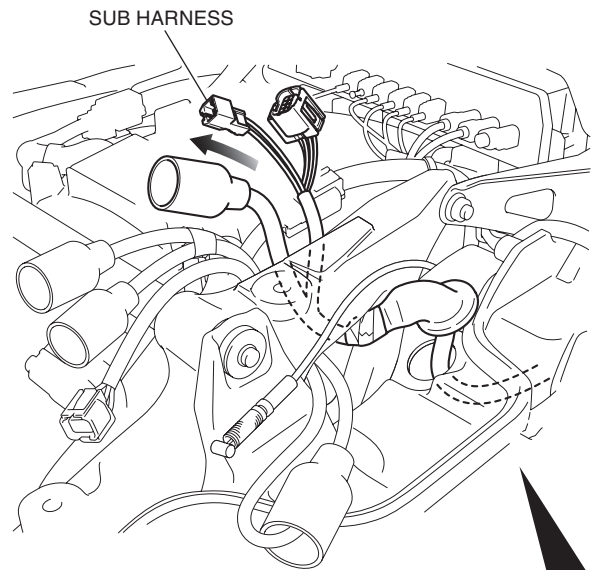
77. Disconnect the connector as shown.



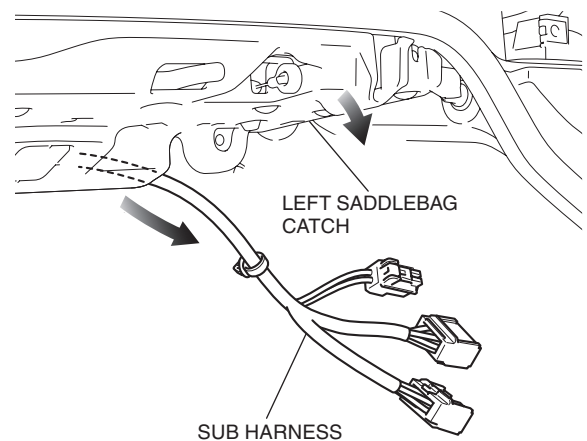
78. Move the motorcycle's harnesses as shown.



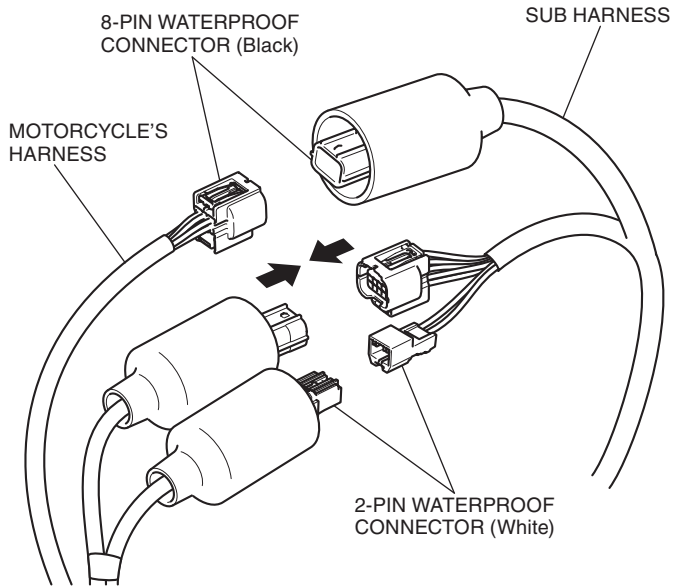
79. Route the sub harness as shown.



Move the left saddlebag catch and route the sub harness as shown.

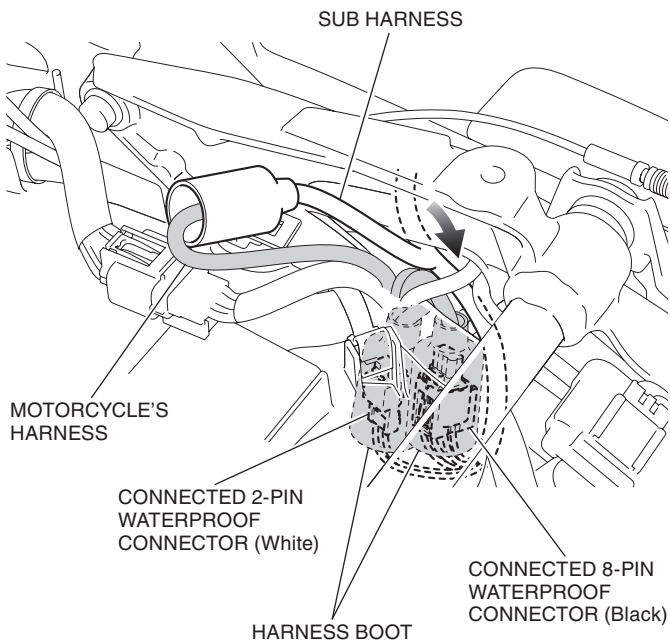


80. Connect the sub harness as shown.

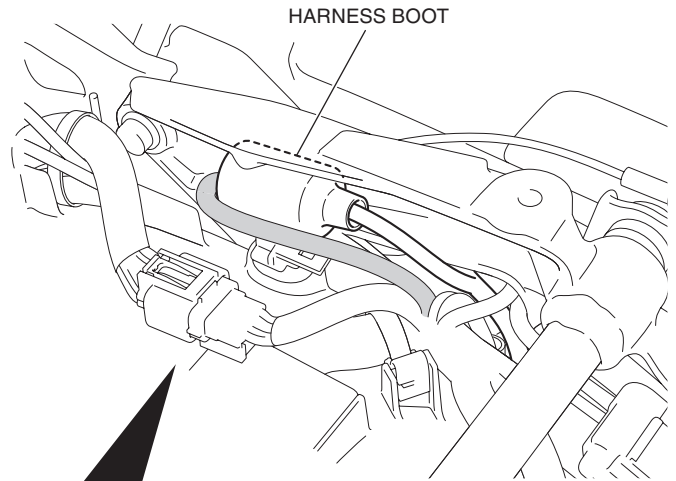


81. Store the harness boots as shown.

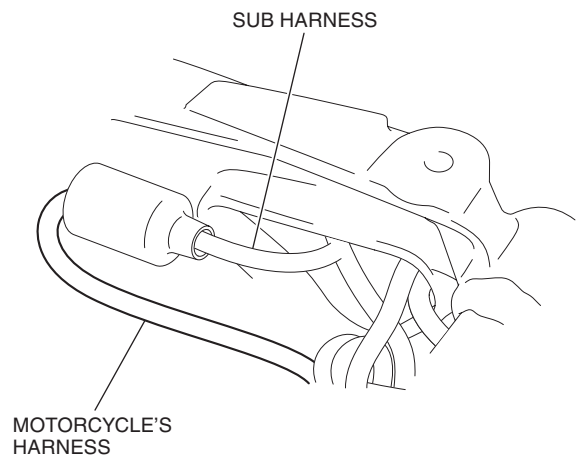
<Left side>



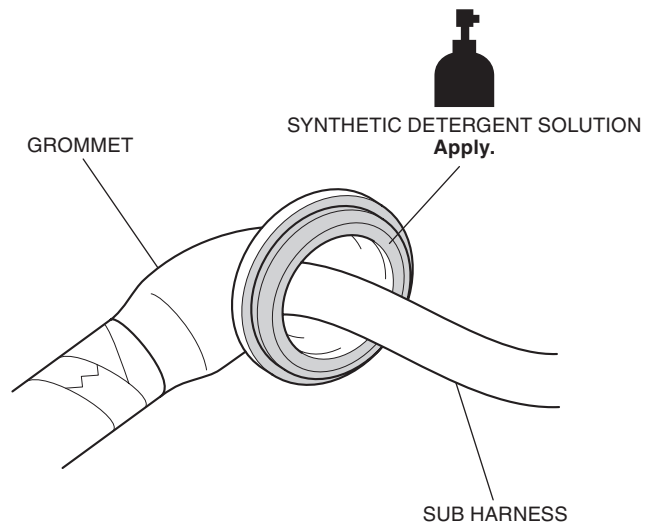
82. Store the boot as shown.



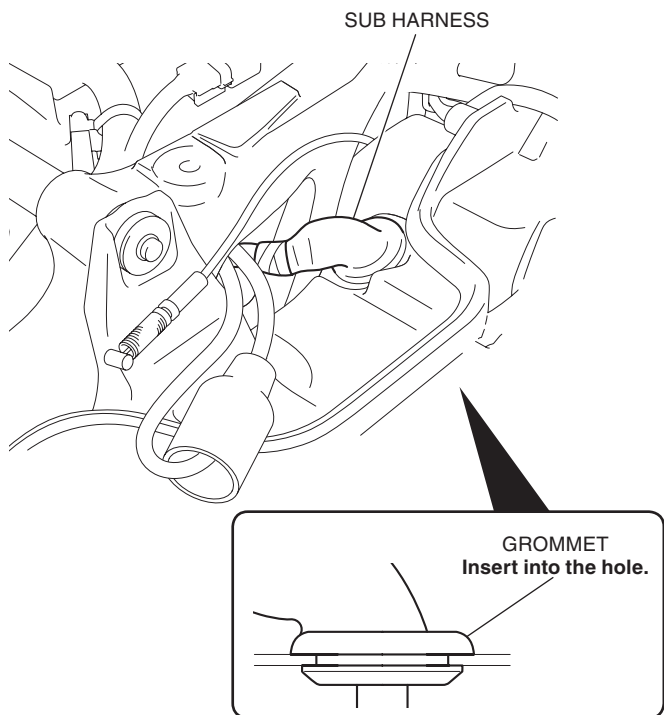
Fold back the motorcycle's harness as shown.



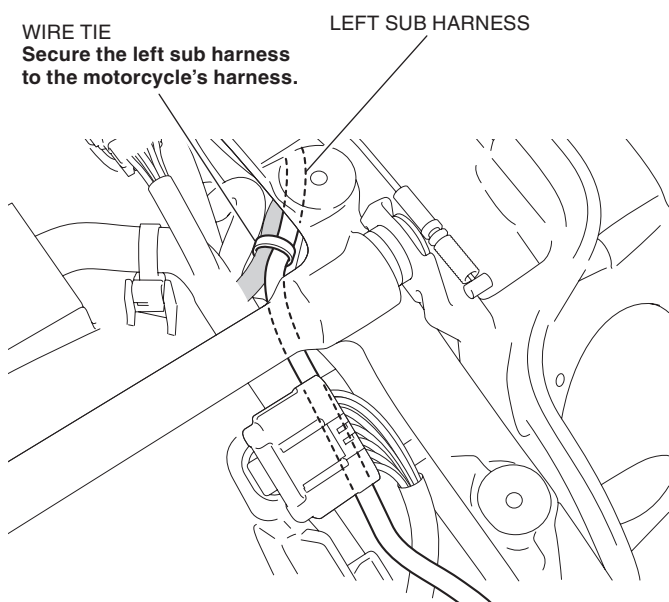
83. Apply synthetic detergent solution to the position shown.



84. Install the sub harness as shown.

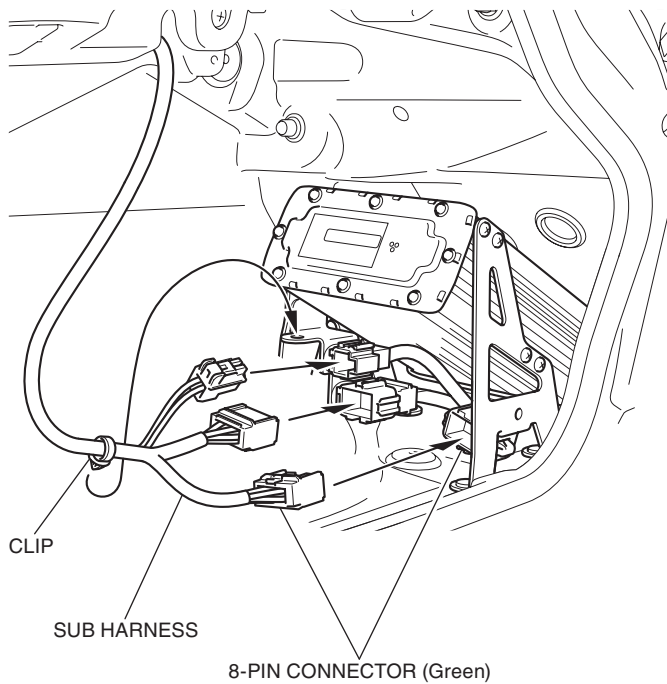


85. Secure the left sub harness with the wire tie as shown.

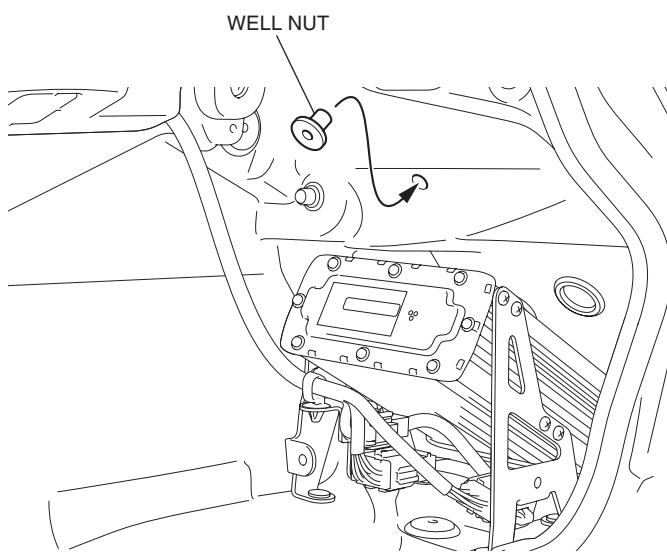


86. Install the left saddlebag catch in the reverse order of removal.

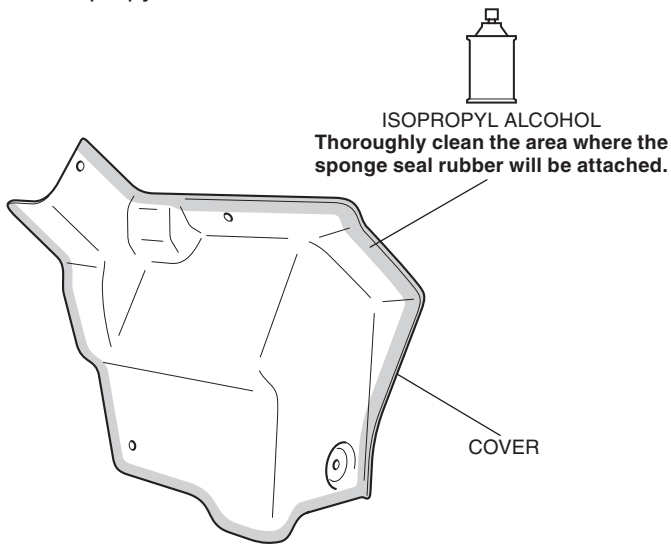
87. Connect the sub harness and install the clip as shown.



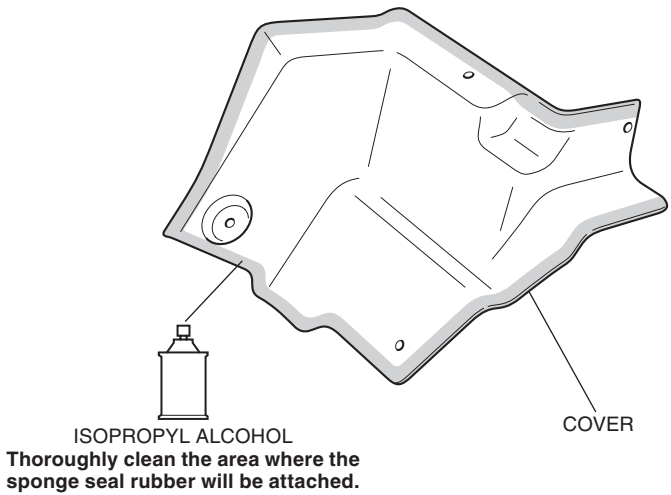
88. Install the well nut as shown.



89. Clean the surface of the area shown using an isopropyl alcohol.

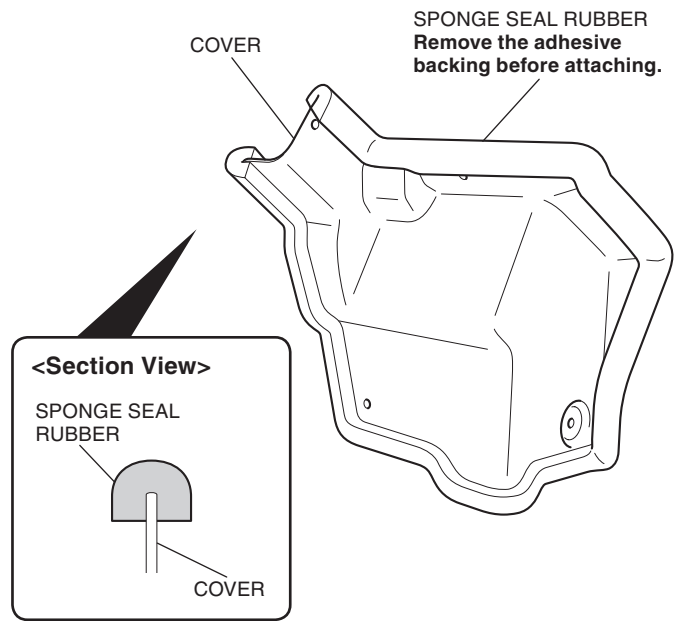


<Backside>



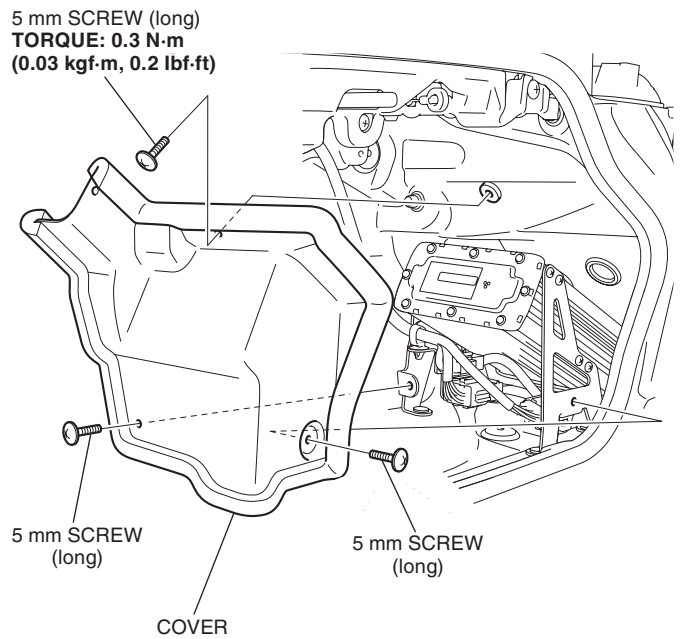
90. Attach the sponge seal rubber as shown.

- Trim the excess end off the sponge seal rubber.

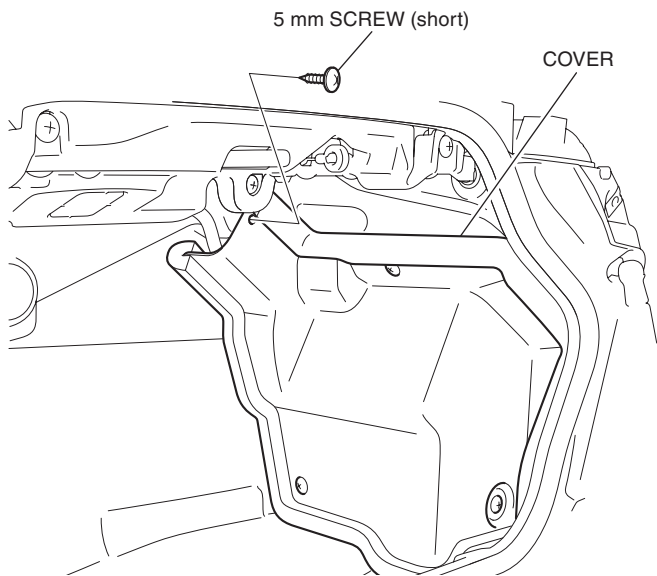


91. Install the cover as shown.

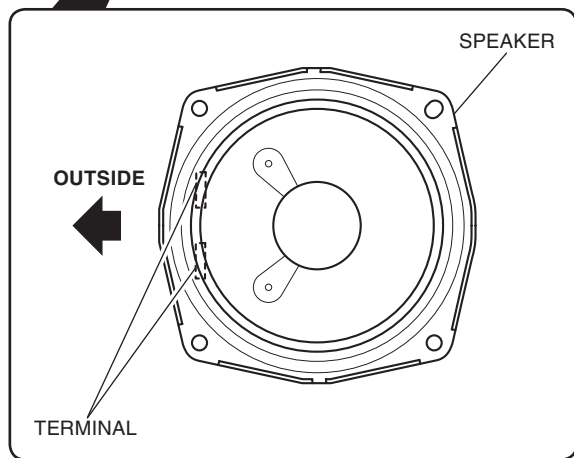
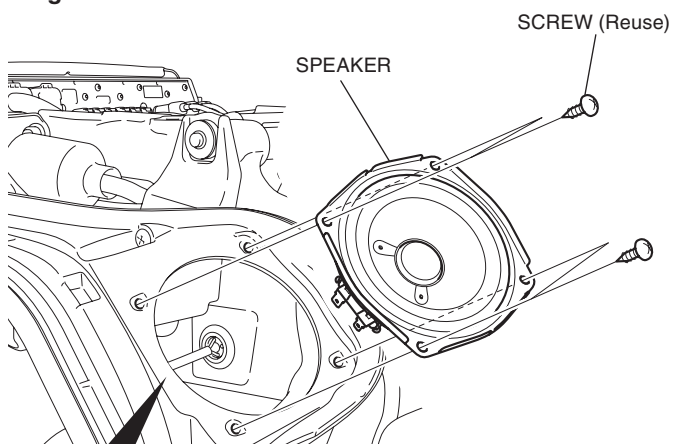
- Confirm that any wire harness is not caught or too tight.



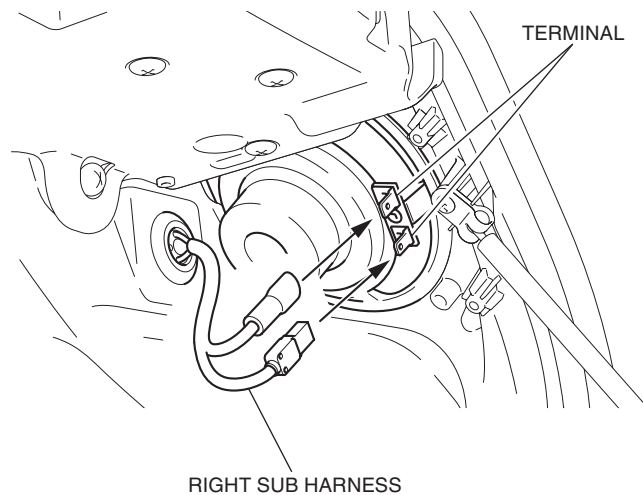
92. Install the 5 mm screw as shown.



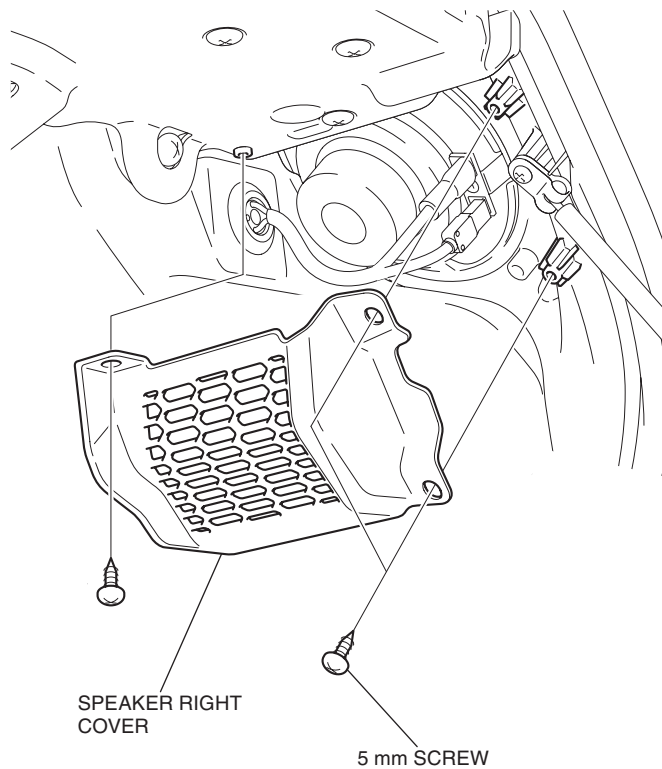
93. Install the speaker as shown.
<Right side>



94. Connect the right sub harness as shown.



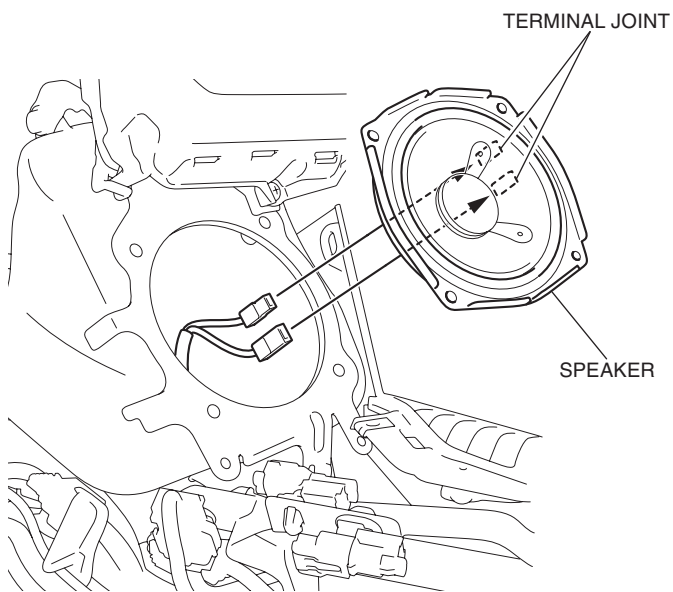
95. Install the speaker right cover as shown.



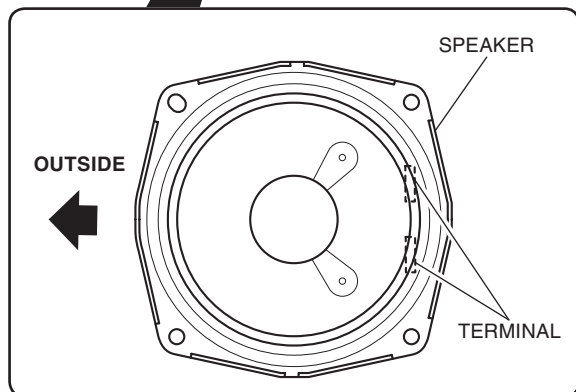
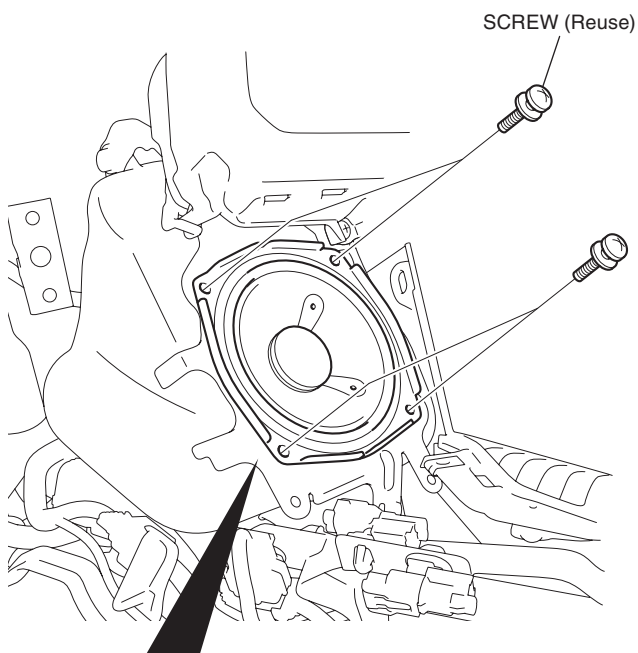
96. Install the left side speaker and speaker left cover in the same manner as the right side.

97. Connect the speaker as shown.

<Left side>



98. Install the speaker as shown.



99. Install the right side speaker in the same manner as the left side.

100. Install the motorcycle's parts in the reverse order of removal.

- **Confirm that any wire harness is not caught or too tight.**

101. Check the power amplifier, speaker, headlight and the other lights for proper operation.