

HONDA

INSTALLATION INSTRUCTIONS

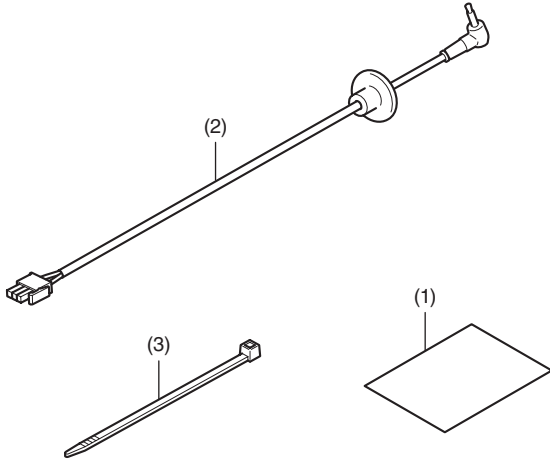
Accessory
AUX CORD
P/N 08A87-MKC-A00

Application
GL1800DA

Publication No.
MII
Issue Date
September 2017

Honda Dealer: Please give a copy of these instructions to your customer.

PARTS LIST



No.	Description	Qty
(1)	Installation Instructions URL	1
(2)	AUX code	1
(3)	Wire tie	1

SUPPLIES REQUIRED

Electric drill
Drill bit (12 mm)
Scale
Masking tape
Synthetic detergent solution
(Water : Synthetic detergent / 100 : 1)
Shop towel
Nippers

INSTALLATION

⚠ CAUTION

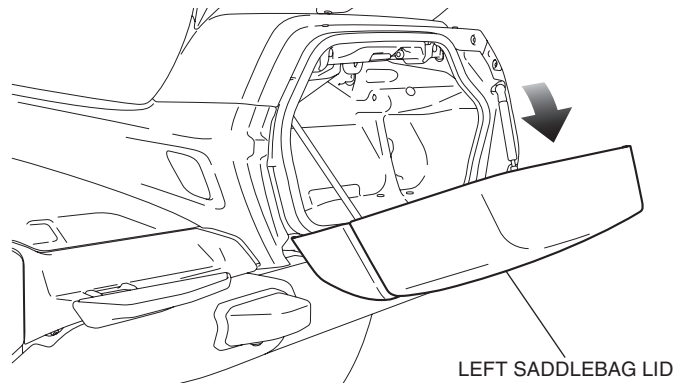
- To prevent burns, allow the engine, exhaust system, radiator, etc., to cool before installing the accessory.

NOTE:

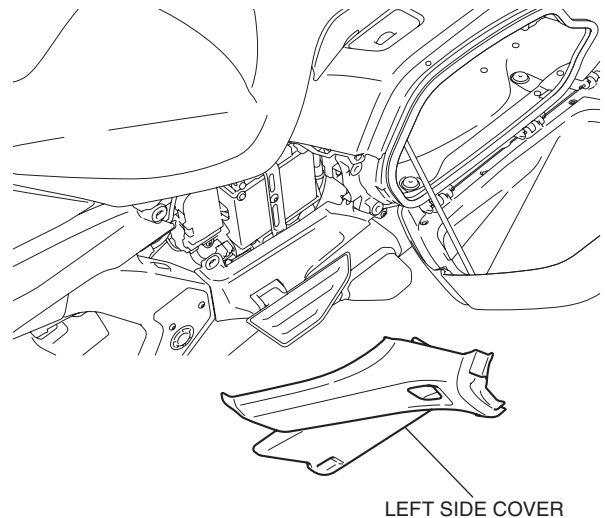
- Disconnect the negative (-) cable from the battery before installing this accessory.
- The memories of the clock will be erased when you disconnect the battery. Reset the memories after reconnecting the battery.
- Reinstall the removed parts on the motorcycle and make sure that the wires and harnesses are not pinched.
- Trim the excess ends off the wire ties after attaching them to the wire harnesses. Do not allow the cut part of the wire tie to interfere with another harness or brake hose.

- Open the left saddlebag lid as shown.
 - Repeat on the right side.

<Left side>

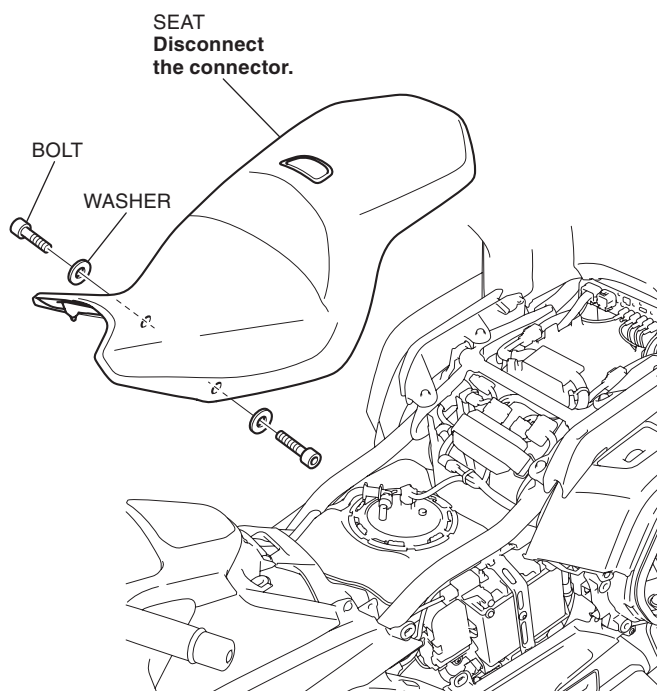


- Remove the left side cover as shown, and disconnect the negative (-) cable of the battery.

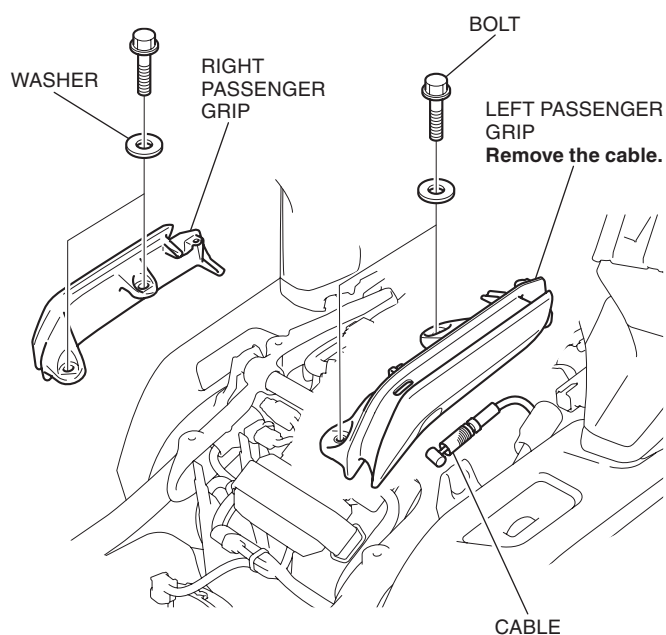


- Remove the right side cover in the same manner as the left side.

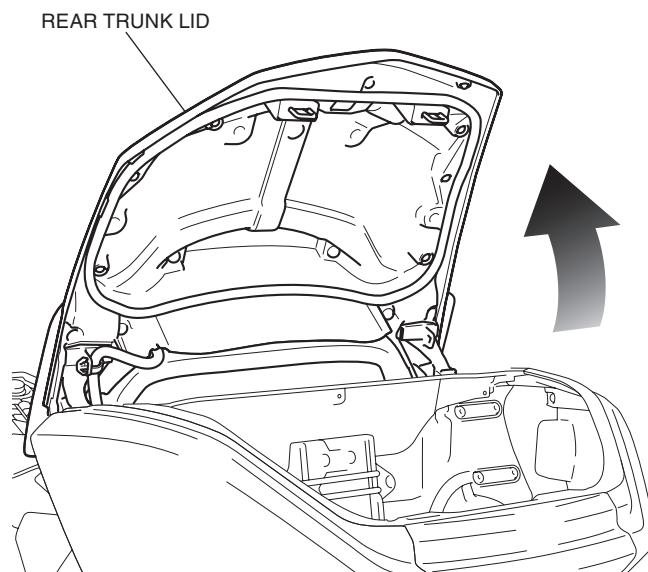
4. Remove the seat as shown.



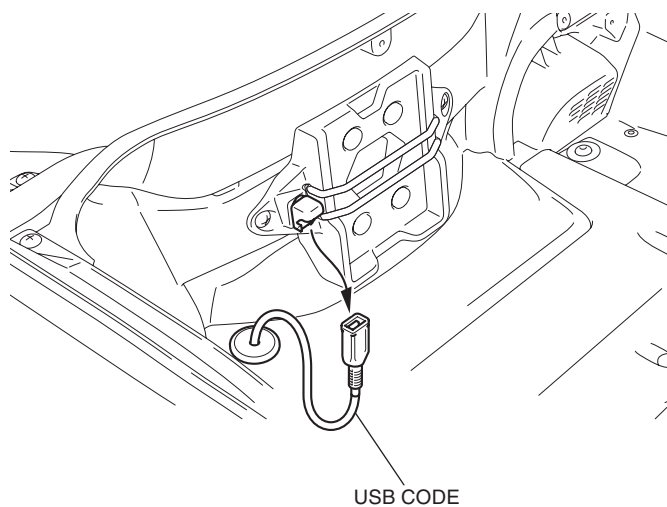
5. Remove the right and left passenger grip as shown.



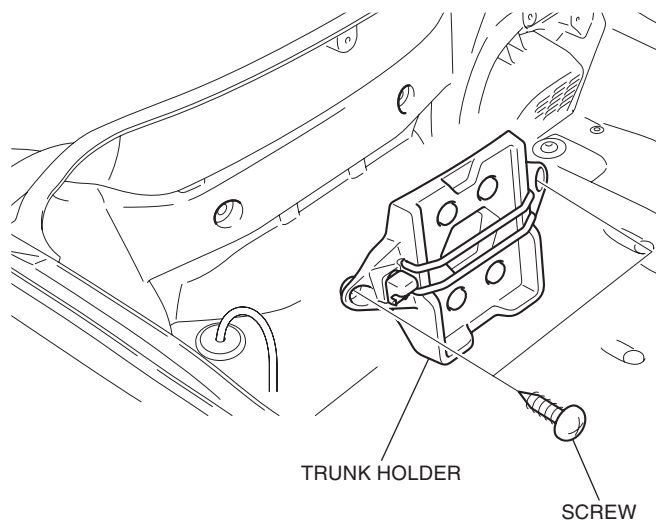
6. Open the rear trunk lid as shown.
- Refer to the Owner's Manual and using an emergency trunk cable to open the rear trunk lid.



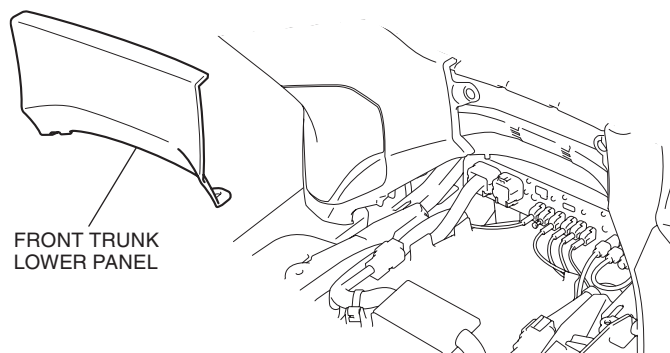
7. Remove the USB code as shown.



8. Remove the trunk holder as shown.

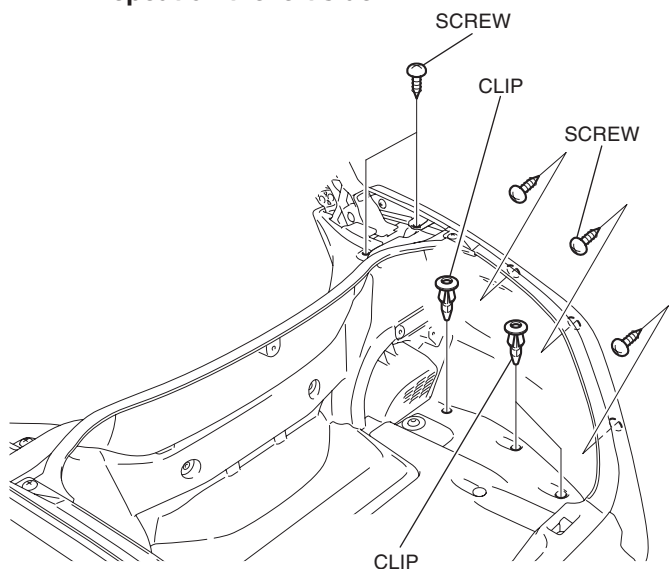


9. Remove the front trunk lower panel as shown.



10. Remove the parts as shown.

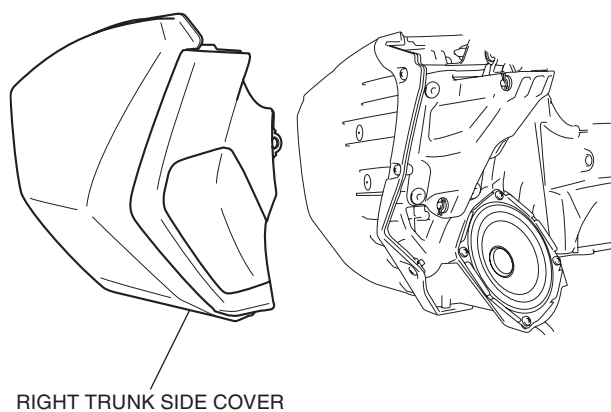
- Repeat on the left side.



11. Remove the right trunk side cover as shown.

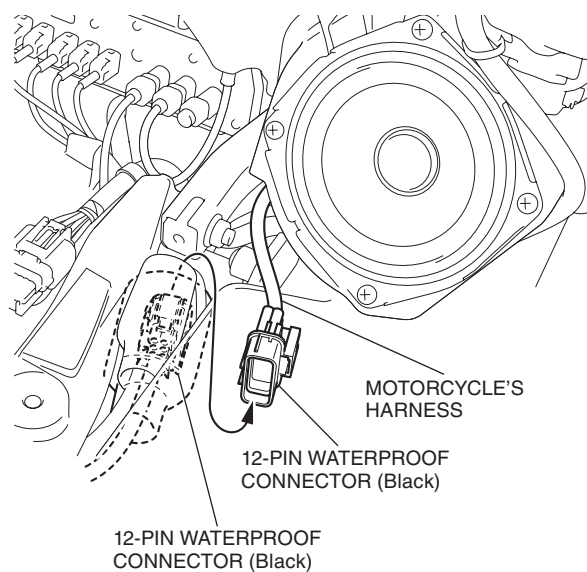
- Repeat on the left side.

<Right side>

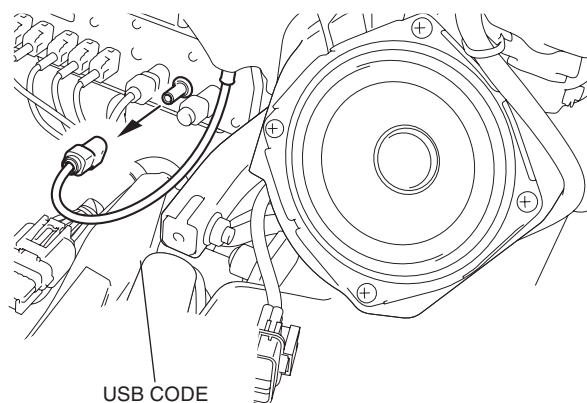


12. Disconnect the connector as shown.

<Left side>

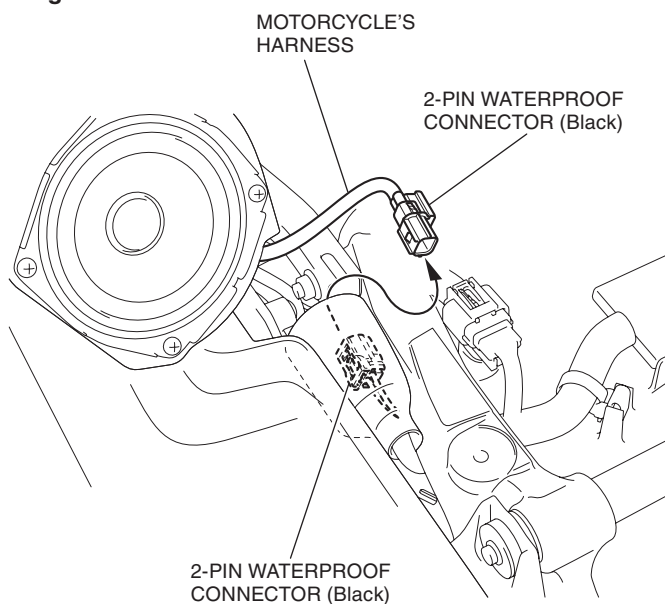


13. Disconnect the USB code as shown.

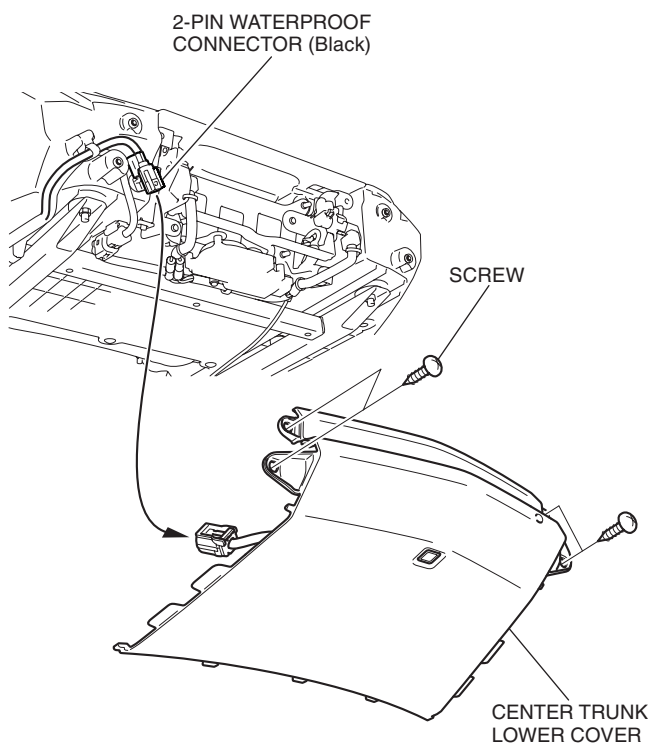


14. Disconnect the connector as shown.

<Right side>

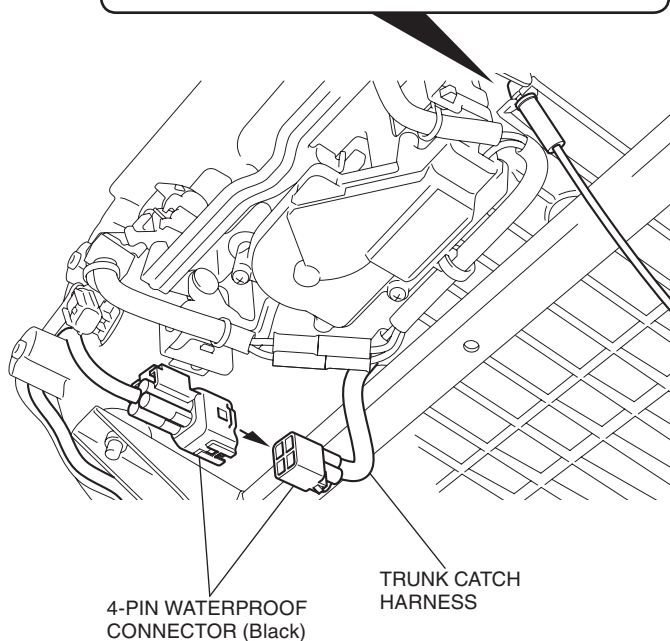
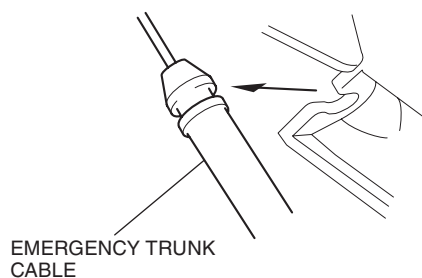


15. Remove the center trunk lower cover as shown.

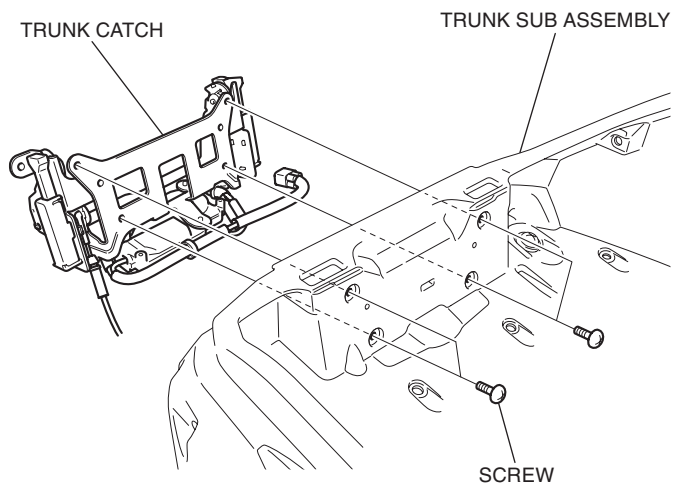


16. Disconnect the trunk catch harness as shown.

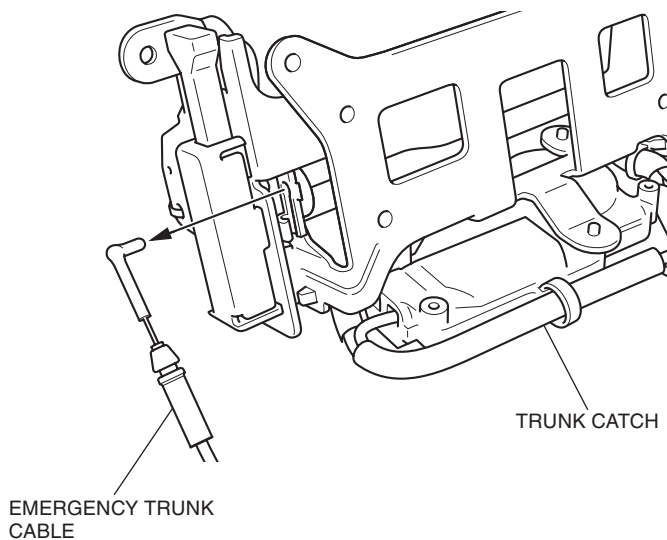
Remove the emergency trunk cable as shown.



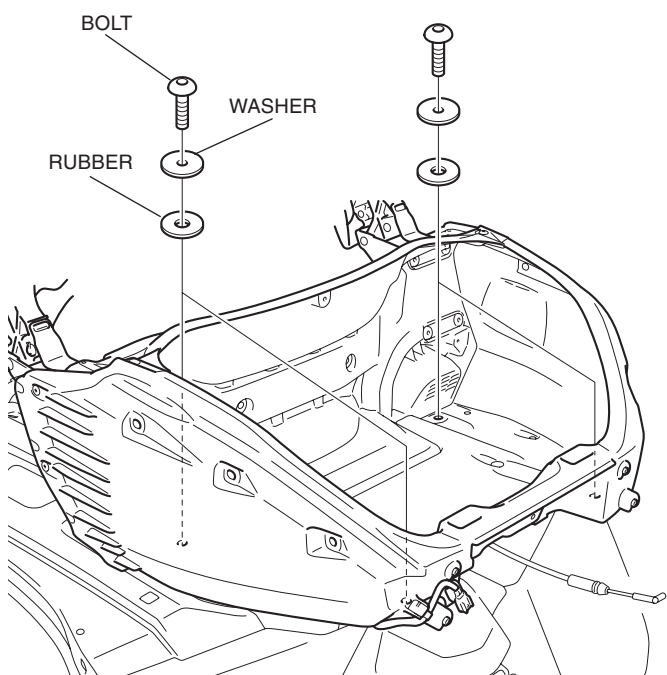
17. Remove the trunk catch as shown.



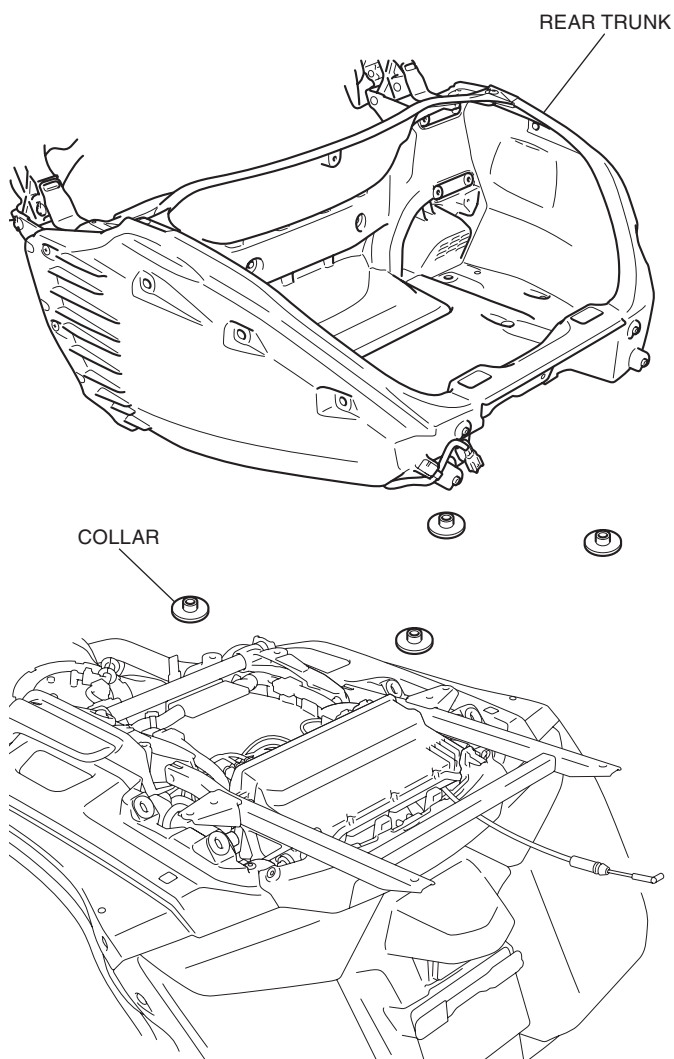
18. Remove the emergency trunk cable as shown.



19. Remove the bolts as shown.

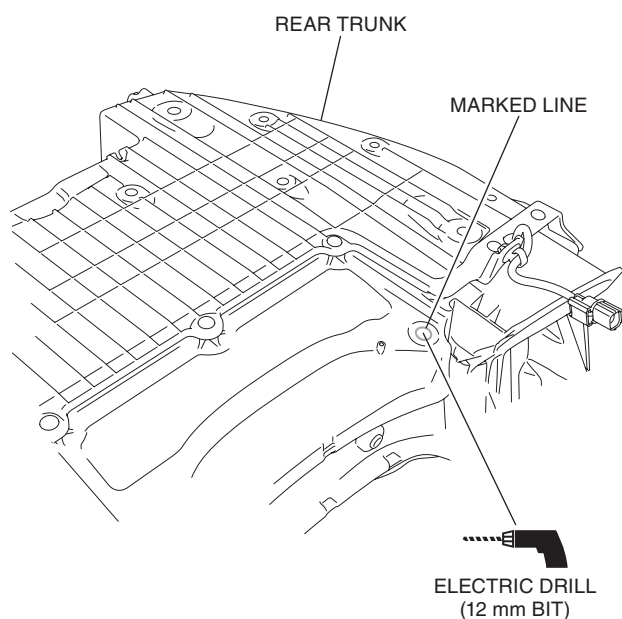


20. Remove the rear trunk as shown.

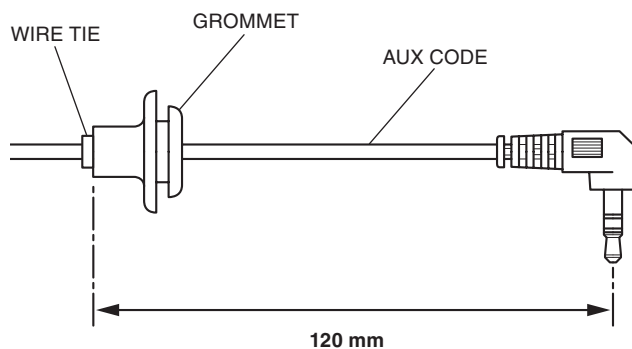


21. Drill at the marked line of the rear trunk as shown.

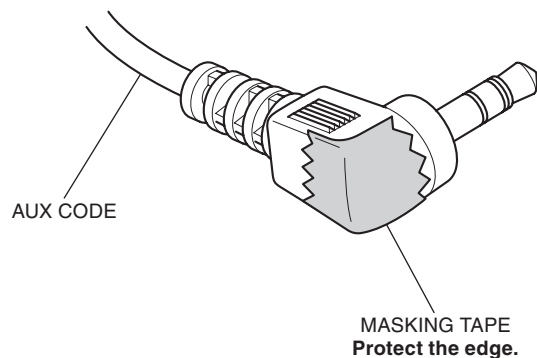
- Drill hole at the center of the marked line.
- Remove the any burrs from the edge of the hole.



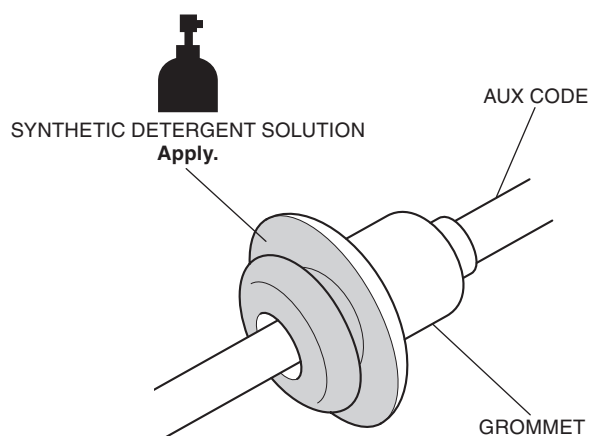
22. Secure the AUX code with the wire tie as shown.



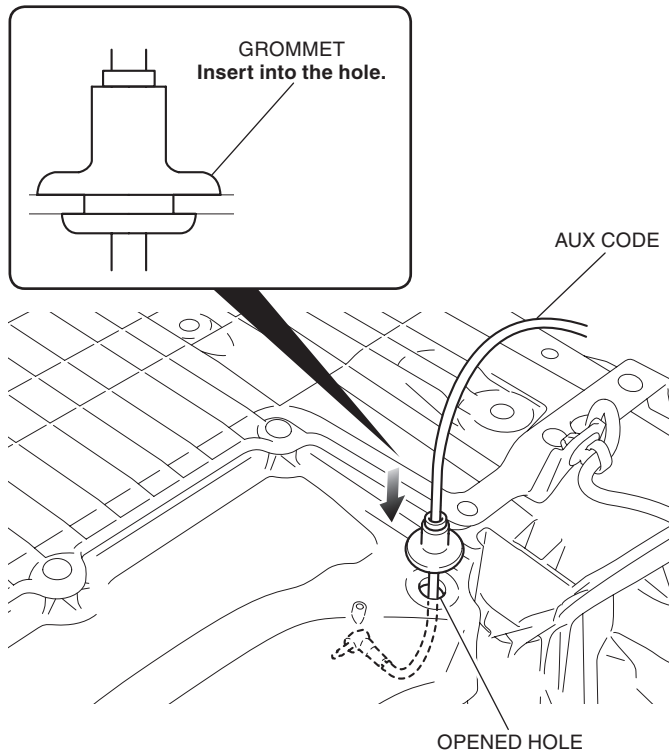
23. Attach the masking tape as shown.



24. Apply synthetic detergent solution to the position shown.



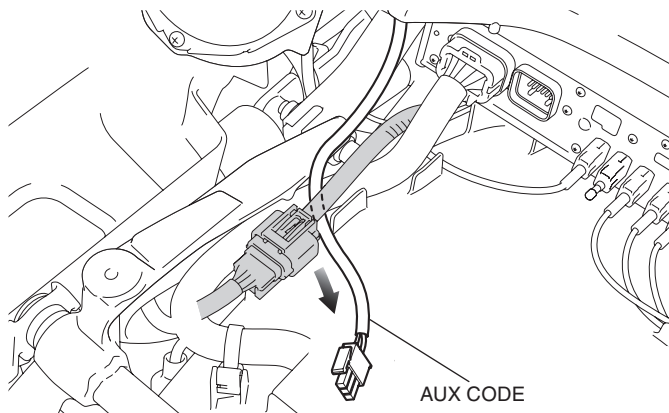
25. Route and install the AUX code as shown.



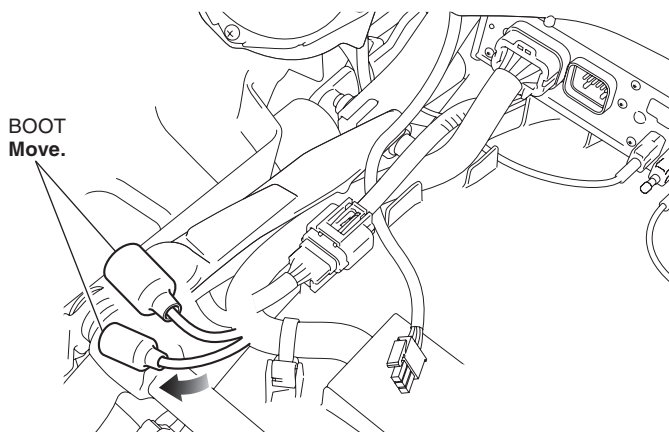
26. Remove the masking tape.

27. Install the rear trunk in the reverse order of removal.

28. Route the AUX code as shown.

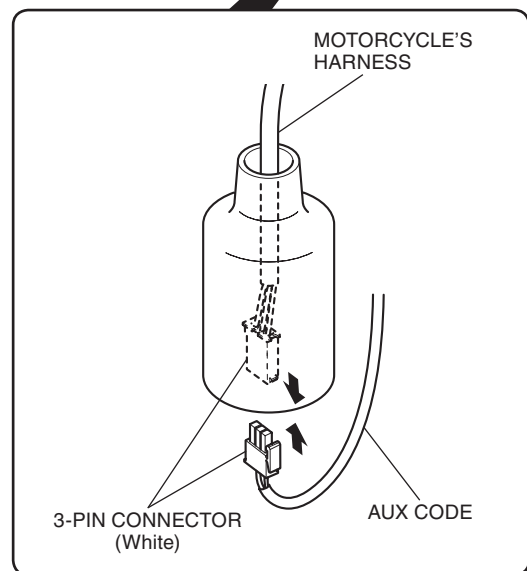
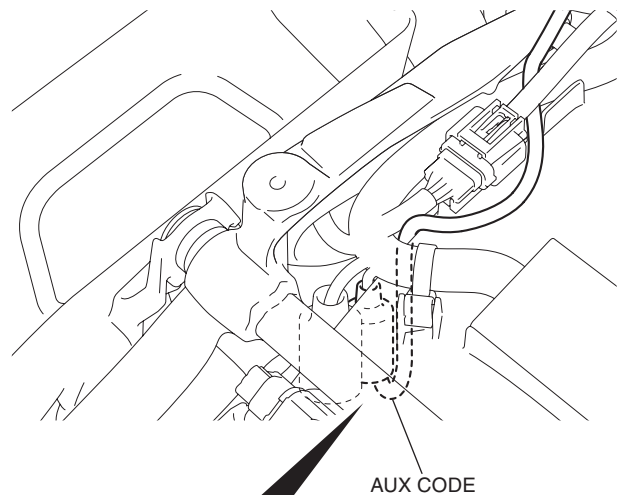


29. Move the boots as shown.



30. Connect the AUX code as shown.

- Set the boots to the original position.



31. Install the motorcycle's parts in the reverse order of removal.

- Confirm that any wire harness is not caught or too tight.

32. Check the AUX, headlight and the other lights for proper operation.