



L.E.D. REAR FENDER STRIP LIGHTS

5690

Thank You For Choosing Kuryakyn!

Protect yourself and others from potential injury and property damage or loss. Pay close attention to all instructions, warnings, cautions, and notices regarding the installation, use, and care of this product.

WARNING

THIS INDICATION ALERTS YOU TO THE FACT THAT IGNORING THE CONTENTS DESCRIBED HEREIN CAN RESULT IN POTENTIAL DEATH OR SERIOUS INJURY.

NOTICE

This indication alerts you to the fact that ignoring the contents described herein may negatively affect product performance and functionality or damage the product itself or the product to which it is being attached.

ENSURE THAT THE FOLLOWING PARTS HAVE BEEN INCLUDED IN THE KIT:

- 1 Right-Side Light Assembly
- 1 Left-Side Light Assembly
- 1 Wiring Harness
- 1 Hardware Kit containing:
 - 2 Alcohol Pads
 - 6 Cable Ties
 - 2 Cord Keepers

YOU WILL ALSO NEED:

Socket set and ratchet or combination wrenches, cutting pliers, warm, soapy water and clean rag, painter's/masking tape

NOTICE

These installation instructions contain important information. Ensure that the end user receives this copy and is aware of its importance for future use.

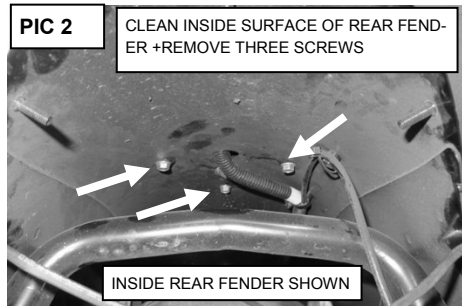
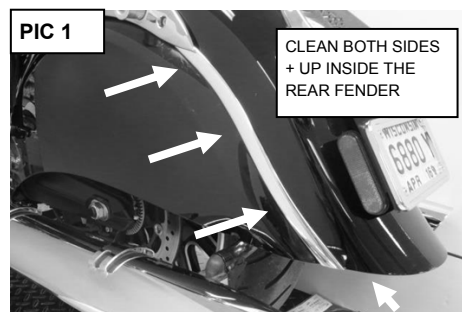
STEP 1 Read and understand all steps in the instructions before starting the installation. Park the motorcycle on a hard, level surface and turn **IGN OFF**. Allow the engine and exhaust system to cool. Remove the main fuse.

STEP 2 Refer to PIC 1. Using warm soapy water and a clean rag, remove all dirt and debris from the installation area; allow the area to dry completely.

NOTICE

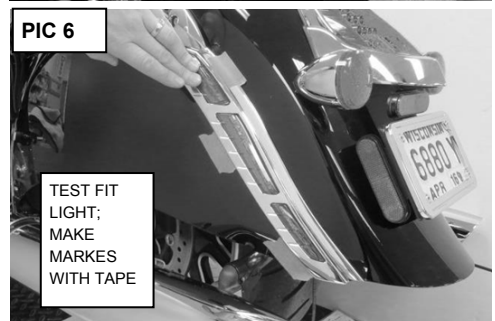
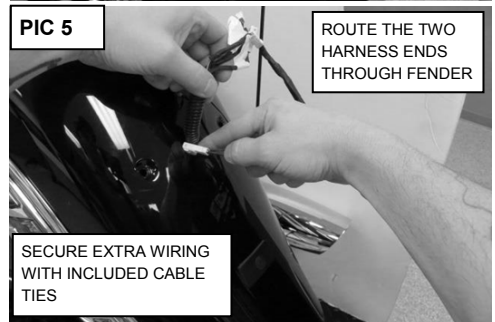
Avoid damage to the motorcycle. Protect painted surfaces with a soft cloth or blanket.

STEP 3 Three screws secure the taillight/turn signal assembly to the fender. Refer to PIC 2. Locate and remove the three screws shown; secure the taillight/turn signal assembly as the screws are removed to prevent damage.





- STEP 4** Refer to PIC 3. Remove and discard the cable tie securing the existing wiring. Disconnect all four of the connectors; set the taillight assembly aside for now; press the tab down on the three white connectors to disconnect; lift the tab up on the black connector to disconnect.
- STEP 5** Refer to PIC 4. Connect the included Wiring Harness to the existing taillight connector; there is only one way to connect them.
- STEP 6** Locate and connect the included Right- and Left-Side Light Assemblies to the Wiring Harness; reinstall the main fuse, turn IGN ON, and ensure that both lights function properly. The Lights should function as Run/Brake lights. Turn IGN OFF. Remove the main fuse.
- STEP 7** Disconnect the Right and Left Side Lights; set them aside for now.
- STEP 8** Route the two Wiring Harness ends through the fender as shown in PIC 5.
- STEP 9** Secure the remaining wiring to the taillight assembly with one of the included Cable Ties. Reconnect the four connections.
- STEP 10** Reinstall the taillight/turn signal assembly in the reverse order it was removed.
- STEP 11** Refer to PIC 1. Wipe the installation area with the included alcohol pad to remove any wax or polish; allow the area to dry completely.
- STEP 12** Test fit the Left-Side Light Assembly as shown in PIC 6. Use masking tape to make alignment marks; remove the Assembly.
- STEP 13** Use your fingernail to rub the adhesive backing; this will activate the adhesive. Remove and discard the backing.
- STEP 14** Align the Light Assembly; press into place for one minute; full bonding will occur after 24 hours. Remove and discard the masking tape.
- STEP 15** Repeat STEPS 12 through 14 for the other side.
- STEP 16** Use the included Cord Keepers and remaining Cable Ties to secure any extra/loose wiring up and out of harm's way on the inside of the rear fender; ensure that the wiring is secured away from any moving parts, excessive heat or pinch points.
- STEP 17** Reinstall the main fuse; ensure all of the lights properly function before operating the motorcycle.



NOTICE

It is the end user's responsibility to ensure that all fasteners (including pre-assembled) are tightened before operation of the motorcycle. Kuryakyn will not provide warranty coverage on products or components lost or damaged due to improper installation or lack of maintenance. Periodic inspection and maintenance are required on all fasteners.

LIMITED WARRANTY

Kuryakyn warrants that any Kuryakyn products sold hereunder, shall be free of defects in materials & workmanship for a period of one (1) year from the date of purchase by the consumer excepting the following provisions:

1. Kuryakyn shall have no obligation in the event the customer is unable to provide a receipt showing the date the customer purchased the product(s).
2. The product must be properly installed, maintained & operated under normal conditions.
3. Kuryakyn shall not be liable for any consequential & incidental damages, including labor & paint, resulting from failure of a Kuryakyn product, failure to deliver, delay in delivery, delivery in nonconforming condition, or for any breach of contract or duty between Kuryakyn & a customer.
4. Kuryakyn products are often intended for use in specific applications. Kuryakyn makes no warranty if a Kuryakyn product is used in applications other than intended.
5. Kuryakyn electrical products are warranted for one (1) year from the date of purchase by the consumer. L.E.D.'s contained in components of Kuryakyn products will be warranted for defects in materials & workmanship for 3 years from the date of purchase whereas all other components shall be warranted for one (1) year.
6. Merchandise purchased directly from Internet auction sites or any other third party seller is considered sold as is & shall not carry a Kuryakyn warranty. All warranty claims must be directed to the original seller. If unsure please contact the seller to verify they are an authorized Kuryakyn retailer.

RETURN POLICY

Merchandise determined to be defective may be returned up to one year from the date of purchase. Returns must be processed through original seller. Returned merchandise for any other reason other than warranty claims must be in like new condition & subject to a 20% restocking fee. All returns are subject to inspection for determination of full or partial credit. Any returned part that shows evidence of being used or installed contrary to manufacturer's instructions, &/or subjected to improper handling, packaging or return shipping by the customer, will not be eligible for exchange, refund or warranty consideration. All returned electrical items will be inspected & tested. If electrical item is deemed functional, no credit will be issued & item will be returned. All sales are final on discontinued or closeout merchandise.