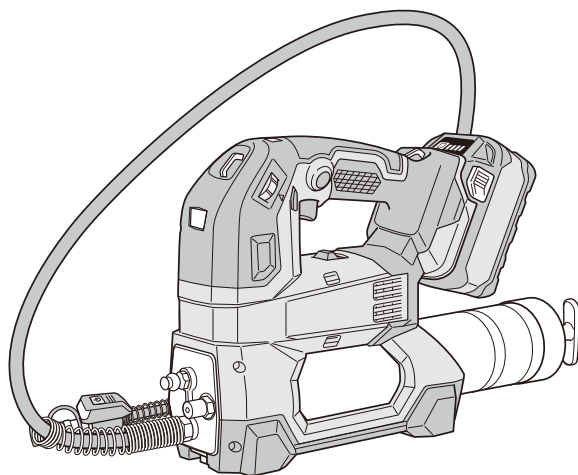


# HIKOKI

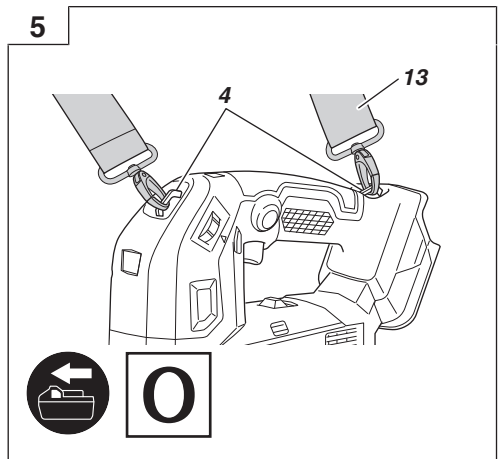
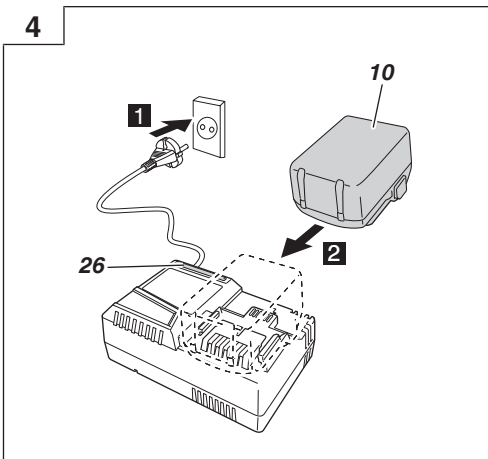
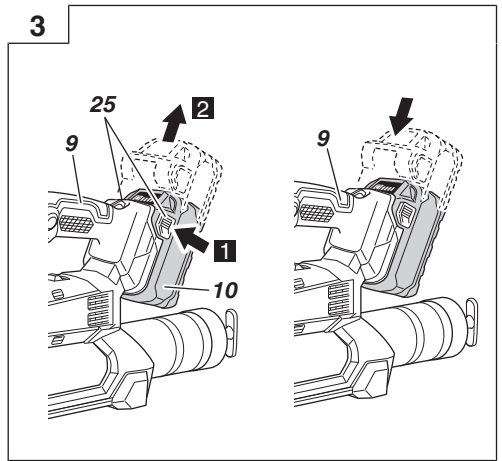
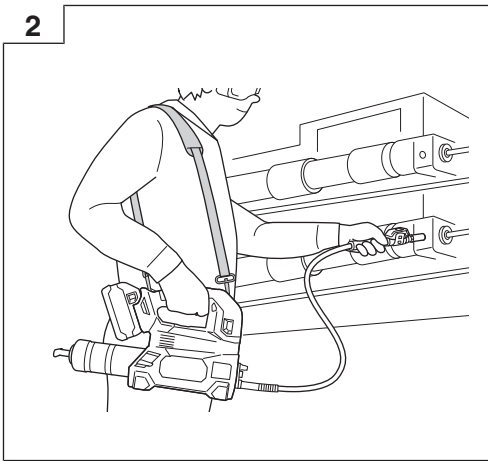
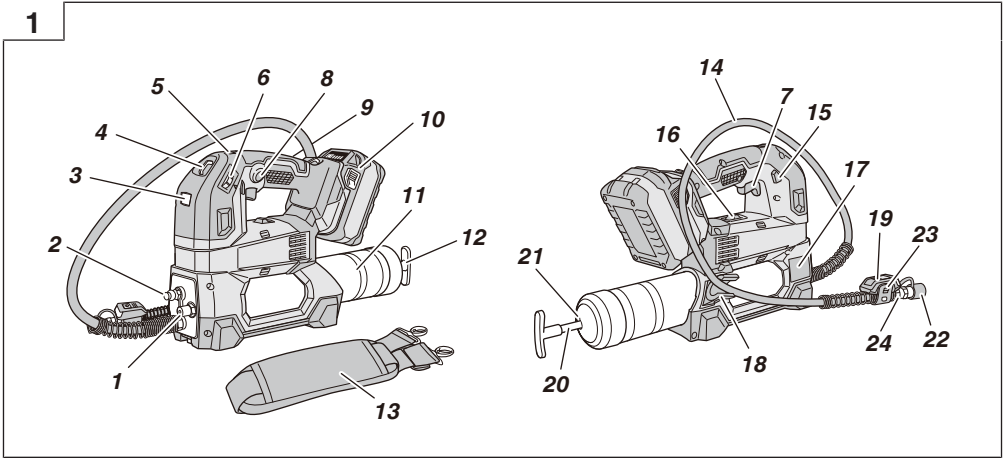
---

## AL 18DA

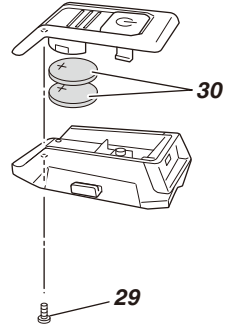
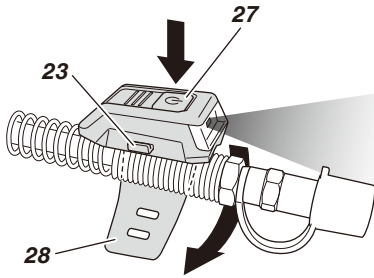
---



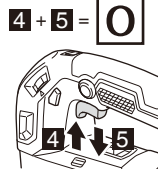
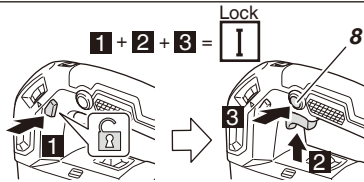
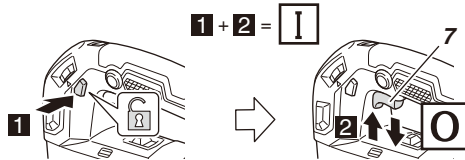
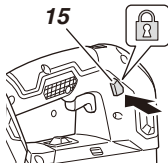
Handling instructions



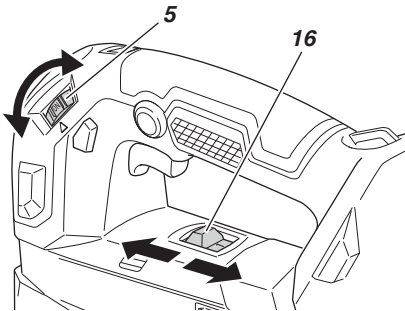
6



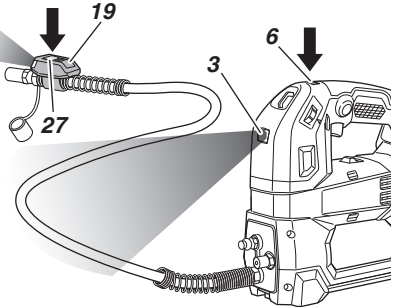
7

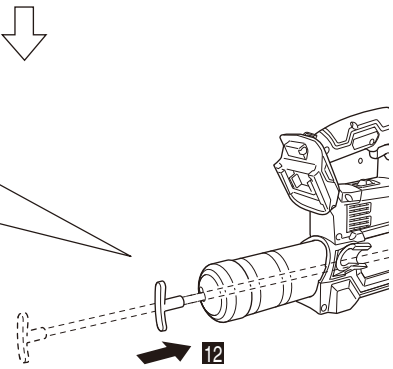
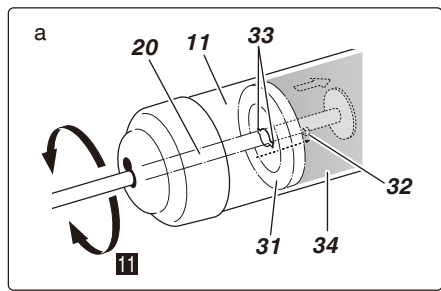
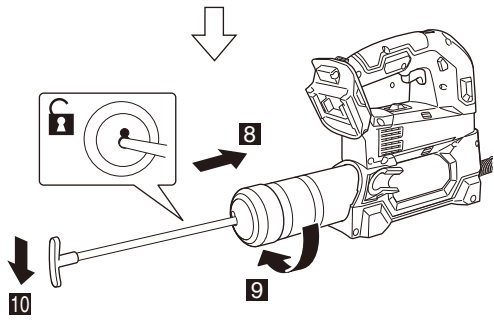
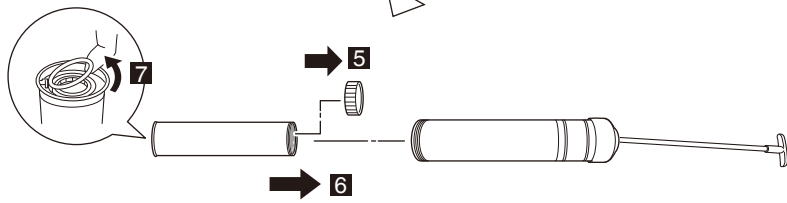
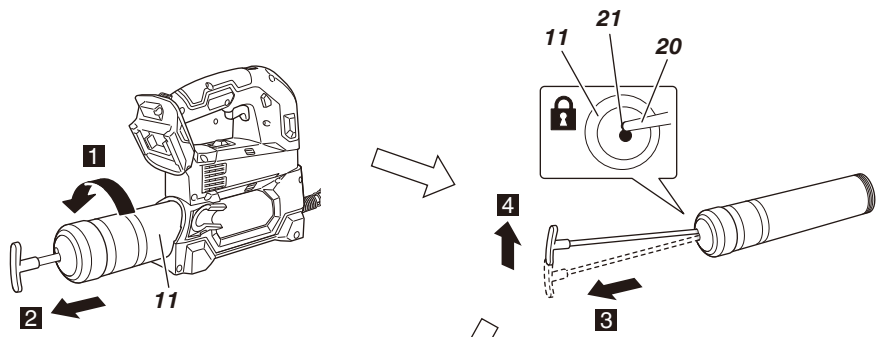


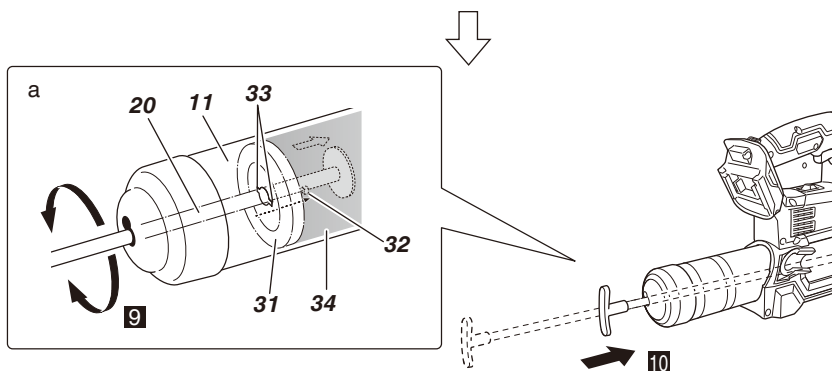
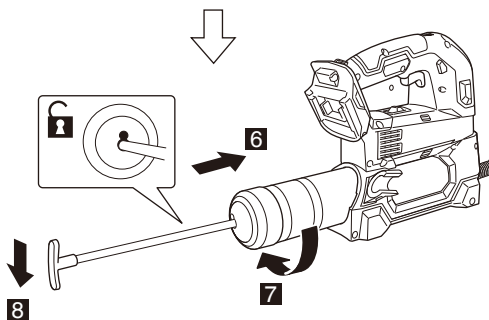
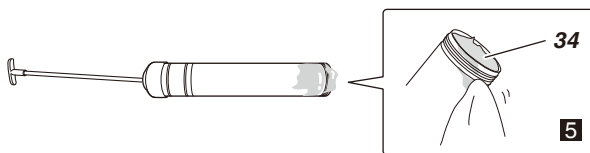
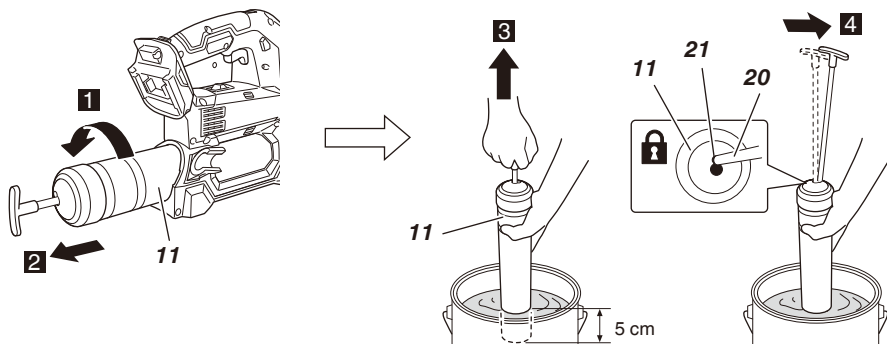
8

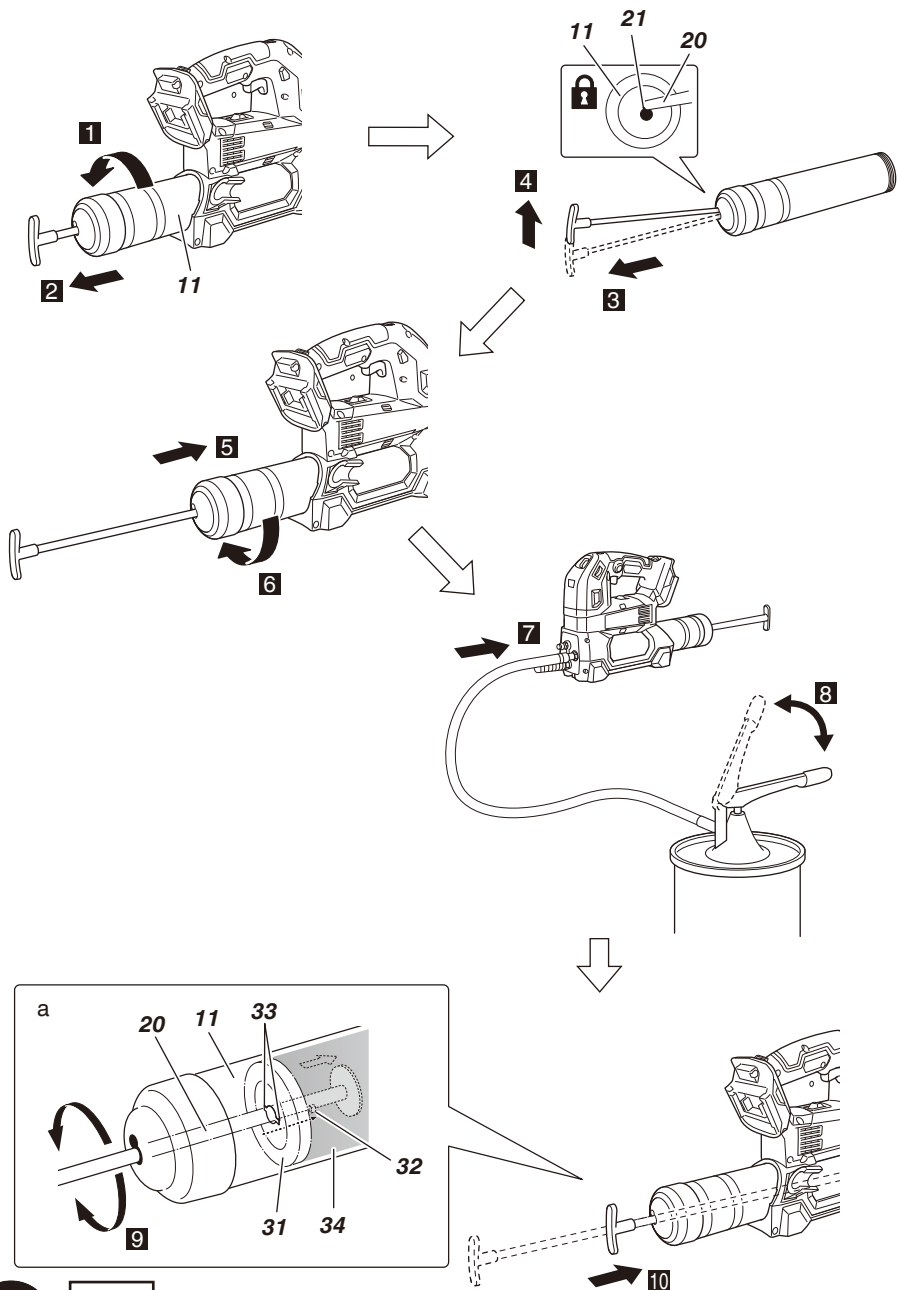


9

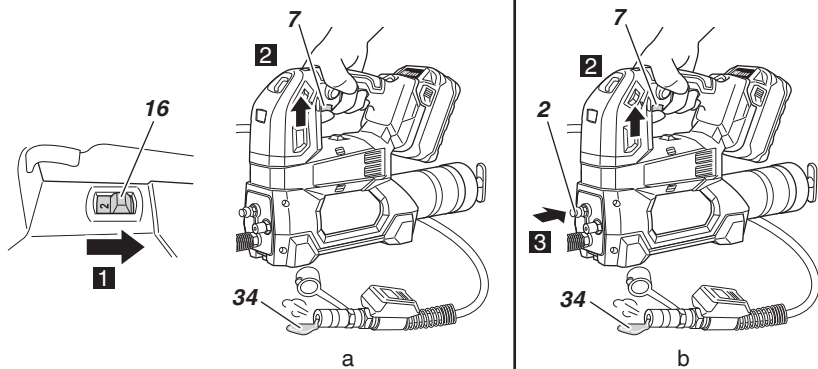




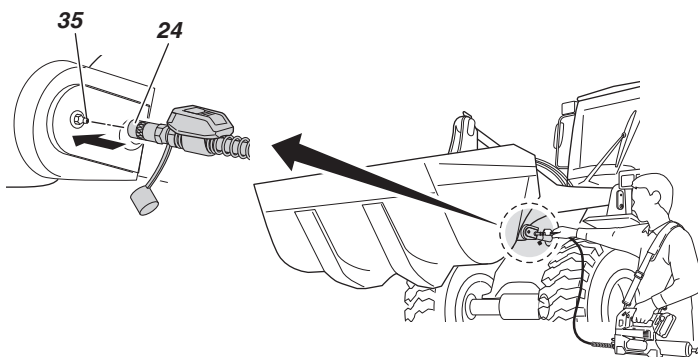




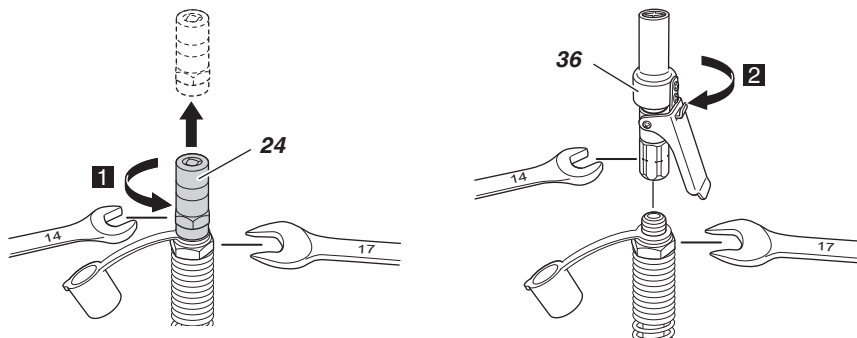
13



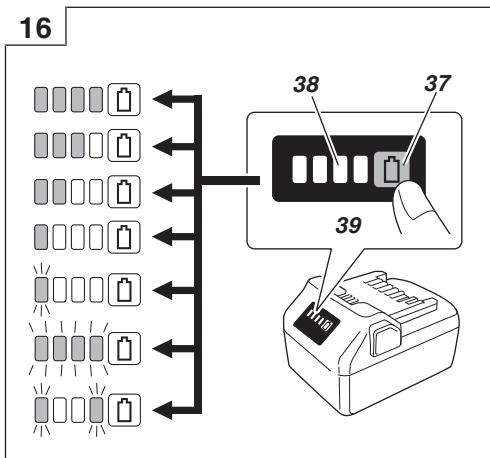
14



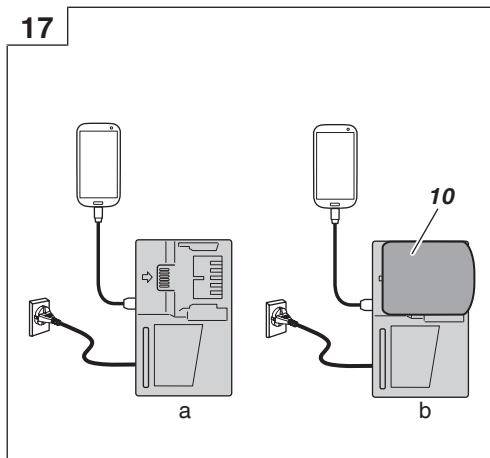
15



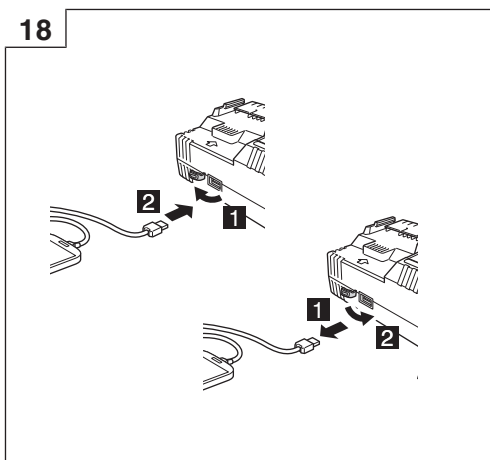
16



17



18





## GENERAL POWER TOOL SAFETY WARNINGS

### **⚠ WARNING**

**Read all safety warnings, instructions, illustrations and specifications provided with this power tool.**

*Failure to follow all instructions listed below may result in electric shock, fire and/or serious injury.*

**Save all warnings and instructions for future reference.**

*The term "power tool" in the warnings refers to your mains-operated (corded) power tool or battery-operated (cordless) power tool.*

#### **1) Work area safety**

- a) **Keep work area clean and well lit.**  
*Cluttered or dark areas invite accidents.*
- b) **Do not operate power tools in explosive atmospheres, such as in the presence of flammable liquids, gases or dust.**  
*Power tools create sparks which may ignite the dust or fumes.*
- c) **Keep children and bystanders away while operating a power tool.**  
*Distractions can cause you to lose control.*

#### **2) Electrical safety**

- a) **Power tool plugs must match the outlet. Never modify the plug in any way. Do not use any adapter plugs with earthed (grounded) power tools.**  
*Unmodified plugs and matching outlets will reduce risk of electric shock.*
- b) **Avoid body contact with earthed or grounded surfaces, such as pipes, radiators, ranges and refrigerators.**  
*There is an increased risk of electric shock if your body is earthed or grounded.*
- c) **Do not expose power tools to rain or wet conditions.**  
*Water entering a power tool will increase the risk of electric shock.*
- d) **Do not abuse the cord. Never use the cord for carrying, pulling or unplugging the power tool. Keep cord away from heat, oil, sharp edges or moving parts.**  
*Damaged or entangled cords increase the risk of electric shock.*
- e) **When operating a power tool outdoors, use an extension cord suitable for outdoor use.**  
*Use of a cord suitable for outdoor use reduces the risk of electric shock.*
- f) **If operating a power tool in a damp location is unavoidable, use a residual current device (RCD) protected supply.**  
*Use of an RCD reduces the risk of electric shock.*

#### **3) Personal safety**

- a) **Stay alert, watch what you are doing and use common sense when operating a power tool. Do not use a power tool while you are tired or under the influence of drugs, alcohol or medication.**  
*A moment of inattention while operating power tools may result in serious personal injury.*
- b) **Use personal protective equipment. Always wear eye protection.**  
*Protective equipment such as a dust mask, non-skid safety shoes, hard hat or hearing protection used for appropriate conditions will reduce personal injuries.*

- c) **Prevent unintentional starting. Ensure the switch is in the off-position before connecting to power source and/or battery pack, picking up or carrying the tool.**  
*Carrying power tools with your finger on the switch or energising power tools that have the switch on invites accidents.*
  - d) **Remove any adjusting key or wrench before turning the power tool on.**  
*A wrench or a key left attached to a rotating part of the power tool may result in personal injury.*
  - e) **Do not overreach. Keep proper footing and balance at all times.**  
*This enables better control of the power tool in unexpected situations.*
  - f) **Dress properly. Do not wear loose clothing or jewellery. Keep your hair and clothing away from moving parts.**  
*Loose clothes, jewellery or long hair can be caught in moving parts.*
  - g) **If devices are provided for the connection of dust extraction and collection facilities, ensure these are connected and properly used.**  
*Use of dust collection can reduce dust-related hazards.*
  - h) **Do not let familiarity gained from frequent use of tools allow you to become complacent and ignore tool safety principles.**  
*A careless action can cause severe injury within a fraction of a second.*
- #### **4) Power tool use and care**
- a) **Do not force the power tool. Use the correct power tool for your application.**  
*The correct power tool will do the job better and safer at the rate for which it was designed.*
  - b) **Do not use the power tool if the switch does not turn it on and off.**  
*Any power tool that cannot be controlled with the switch is dangerous and must be repaired.*
  - c) **Disconnect the plug from the power source and/ or remove the battery pack, if detachable, from the power tool before making any adjustments, changing accessories, or storing power tools.**  
*Such preventive safety measures reduce the risk of starting the power tool accidentally.*
  - d) **Store idle power tools out of the reach of children and do not allow persons unfamiliar with the power tool or these instructions to operate the power tool.**  
*Power tools are dangerous in the hands of untrained users.*
  - e) **Maintain power tools and accessories. Check for misalignment or binding of moving parts, breakage of parts and any other condition that may affect the power tool's operation. If damaged, have the power tool repaired before use.**  
*Many accidents are caused by poorly maintained power tools.*
  - f) **Keep cutting tools sharp and clean.**  
*Properly maintained cutting tools with sharp cutting edges are less likely to bind and are easier to control.*
  - g) **Use the power tool, accessories and tool bits etc. in accordance with these instructions, taking into account the working conditions and the work to be performed.**  
*Use of the power tool for operations different from those intended could result in a hazardous situation.*
  - h) **Keep handles and grasping surfaces dry, clean and free from oil and grease.**

*Slippery handles and grasping surfaces do not allow for safe handling and control of the tool in unexpected situations.*

#### 5) Battery tool use and care

##### a) Recharge only with the charger specified by the manufacturer.

*A charger that is suitable for one type of battery pack may create a risk of fire when used with another battery pack.*

##### b) Use power tools only with specifically designated battery packs.

*Use of any other battery packs may create a risk of injury and fire.*

##### c) When battery pack is not in use, keep it away from other metal objects, like paper clips, coins, keys, nails, screws or other small metal objects, that can make a connection from one terminal to another.

*Shorting the battery terminals together may cause burns or a fire.*

##### d) Under abusive conditions, liquid may be ejected from the battery; avoid contact. If contact accidentally occurs, flush with water. If liquid contacts eyes, additionally seek medical help.

*Liquid ejected from the battery may cause irritation or burns.*

##### e) Do not use a battery pack or tool that is damaged or modified.

*Damaged or modified batteries may exhibit unpredictable behaviour resulting in fire, explosion or risk of injury.*

##### f) Do not expose a battery pack or tool to fire or excessive temperature.

*Exposure to fire or temperature above 130°C may cause explosion.*

##### g) Follow all charging instructions and do not charge the battery pack or tool outside the temperature range specified in the instructions.

*Charging improperly or at temperatures outside the specified range may damage the battery and increase the risk of fire.*

#### 6) Service

##### a) Have your power tool serviced by a qualified repair person using only identical replacement parts.

*This will ensure that the safety of the power tool is maintained.*

##### b) Never service damaged battery packs.

*Service of battery packs should only be performed by the manufacturer or authorized service providers.*

#### PRECAUTION

**Keep children and infirm persons away.**

**When not in use, tools should be stored out of reach of children and infirm persons.**

## CORDLESS GREASE GUN SAFETY WARNINGS

1. Before beginning work, inspect the flexible hose, grease nipple, and coupler to ensure there are no scratches or looseness.
2. Make sure to securely hold the handle and flexible hose of the tool during operation. Failure to do so can result in accidents or injuries. Additionally, be careful not to twist the hose. (Fig. 2)
3. Do not operate the tool near flames. The grease could be flammable.

4. Do not carry the tool by the flexible hose or the bar handle.
5. **⚠ The hose must not be clogged!**  
Before each use, check the flexible hose for permeability.
6. Check that all elements attached to the unit are firmly in place.
7. Check the safety devices before operation as described in the instructions.
8. Do not use any material other than grease. Use a grease that meets the conditions listed in this instruction manual.
9. Read and follow the grease manufacturer's instructions before use.
10. **⚠ Danger of crushing** – wear work gloves!  
Keep hands and clothing away from the bar of the bar handle.
11. **⚠ Danger of crushing** – wear work gloves!  
Wipe off any grease adhering to the tool to prevent it from slipping and thus causing injuries.
12. Do not forcefully bend or compress the flexible hose. This can cause the hose to break or become deformed.
13. Do not point the end of the hose at people.
14. Use only a hose specified by HiKOKI.  
The environment in which the power tool is used must be well-lit, adequately ventilated and dry.
15. When using the grease gun, make sure you maintain a healthy posture.
16. When using the shoulder belt, ensure that it does not slip from your shoulder and that the grease gun does not become unstable. The shoulder belt provides only assistive support. When using the grease gun, carry it by holding its handle.
17. Wear safety glasses and a suitable protective mask while working.
18. Do not use in locations where inflammable materials such as lacquer, paint, benzene, thinner or gasoline are present.
19. The power tool is equipped with a temperature protection circuit to protect the motor. Continuous work may cause the temperature of the unit to rise, activating the temperature protection circuit and automatically stopping operation. If this happens, allow the power tool to cool before resuming use.  
The timing of safeguard-function activation may differ depending on the temperature of the usage environment, and on the type and condition of the grease.
20. The motor may stop in the event the tool is overloaded. In this should occur, release the tool's switch and eliminate the cause of the overload.
21. If you notice that the unit is generating unusually high temperatures, operating poorly, or making abnormal noises, immediately stop using and shut off the power switch. Request an inspection and repair from the dealer where you purchased the unit or a HiKOKI Authorized Service Center.  
Continuing to use while operating abnormally might cause injuries.
22. If the unit is mistakenly dropped or strikes another object, make a thorough check of the unit for cracks, breakage or deformation, etc.  
Injuries might occur if the unit has cracks, breakage or deformation.
23. NEVER leave tool running unattended. Turn power off. Don't leave tool until it comes to a complete stop.
24. Do not strike the tool with other objects; avoid strong impacts such as dropping the tool; and do not allow the tool to get wet.  
Any one of these can damage the built-in precision parts and result in malfunction.

25. Never operate from an unstable footing, such as when on a ladder or step ladder.  
Doing so may cause an injury.
26. When working at elevated locations, clear the area of other people and aware of conditions below you.
27. Do not look directly into the light. Such actions could result in eye injury.  
Wipe off any dirt or grime attached to the lens of the LED light with a soft cloth, being careful not to scratch the lens.  
Scratches on the lens of the LED light can result in decreased brightness.
28. Precautions during transport
  - Release the switch on the body of the machine and remove the battery.
  - Carry the machine by the handle on its body.
  - When transporting it via vehicle, take appropriate steps to prevent it from falling over or being damaged.
29. Securely install the included accessories and separately-sold parts according to the instruction manual.
30. About the Hose LED included as standard:  
Only use the batteries provided for this purpose.  
Use of any other batteries may lead to injuries, damage or risk of fire.
31. ⚠ Danger of swallowing!  
If a button cell is swallowed
  - Seek immediate medical advice at a hospital or doctor's clinic.
  - DO NOT eat or drink ANYTHING until the presence of a button cell has been checked by medical staff.
  - If possible, bring the battery packaging with you to hospital to determine which type of battery was swallowed.
32. Do not operate the LED light without a window, or with a window that is damaged.
33. Do not leave the device on while unattended.
34. Do not contaminate the lens with organic solvents.
35. Always charge the battery at a temperature of 0°C–40°C. A temperature of less than 0°C will result in over charging which is dangerous. The battery cannot be charged at a temperature higher than 40°C. The most suitable temperature for charging is that of 20°C–25°C.
36. Do not use the charger continuously.  
When one charging is completed, leave the charger for about 15 minutes before the next charging of battery.
37. Do not allow foreign matter to enter the hole for connecting the rechargeable battery.
38. Never disassemble the rechargeable battery and charger.
39. Never short-circuit the rechargeable battery. Short-circuiting the battery will cause a great electric current and overheat. It results in burn or damage to the battery.
40. Do not dispose of the battery in fire. If the battery is burnt, it may explode.
41. Bring the battery to the shop from which it was purchased as soon as the post-charging battery life becomes too short for practical use. Do not dispose of the exhausted battery.
42. Do not insert objects into the air ventilation slots of the charger.  
Inserting metal objects or inflammables into the charger air ventilation slots will result in electrical shock hazard or a damaged charger.
43. When using this unit continuously, the unit may overheat, leading to damage in the motor and switch. Therefore, whenever the housing becomes hot, give the tool a break for a while.
44. Make sure that the battery is installed firmly. If it is at all loose it could come off and cause an accident.
45. Do not use the product if the tool or the battery terminals (battery mount) are deformed.  
Installing the battery could cause a short circuit that could result in smoke emission or ignition.
46. Keep the tool's terminals (battery mount) free of swarf and dust.
  - Prior to use, make sure that swarf and dust have not collected in the area of the terminals.
  - During use, try to avoid swarf or dust on the tool from falling on the battery.
  - When suspending operation or after use, do not leave the tool in an area where it may be exposed to falling swarf or dust.  
Doing so could cause a short circuit that could result in smoke emission or ignition.
47. Always use the tool and battery at temperatures between -5°C and 40°C.

## CAUTION ON LITHIUM-ION BATTERY

To extend the lifetime, the lithium-ion battery equips with the protection function to stop the output.

In the cases of 1 to 3 described below, when using this product, even if you are pulling the switch, the motor may stop. This is not the trouble but the result of protection function.

1. When the battery power remaining runs out, the motor stops.  
In such a case, charge it up immediately.
2. If the tool is overloaded, the motor may stop. In this case, release the switch of tool and eliminate causes of overloading. After that, you can use it again.
3. If the battery is overheated under overload work, the battery power may stop.  
In this case, stop using the battery and let the battery cool. After that, you can use it again.

Furthermore, please heed the following warning and caution.

### WARNING

In order to prevent any battery leakage, heat generation, smoke emission, explosion and ignition beforehand, please be sure to heed the following precautions.

1. Make sure that swarf and dust do not collect on the battery.
  - During work make sure that swarf and dust do not fall on the battery.
  - Make sure that any swarf and dust falling on the power tool during work do not collect on the battery.
  - Do not store an unused battery in a location exposed to swarf and dust.
  - Before storing a battery, remove any swarf and dust that may adhere to it and do not store it together with metal parts (screws, nails, etc.).
2. Do not pierce battery with a sharp object such as a nail, strike with a hammer, step on, throw or subject the battery to severe physical shock.
3. Do not use an apparently damaged or deformed battery.
4. Do not use the battery for a purpose other than those specified.
5. If the battery charging fails to complete even when a specified recharging time has elapsed, immediately stop further recharging.
6. Do not put or subject the battery to high temperatures or high pressure such as into a microwave oven, dryer, or high pressure container.
7. Keep away from fire immediately when leakage or foul odor are detected.
8. Do not use in a location where strong static electricity generates.

9. If there is battery leakage, foul odor, heat generated, discolored or deformed, or in any way appears abnormal during use, recharging or storage, immediately remove it from the equipment or battery charger, and stop use.
10. Do not immerse the battery or allow any fluids to flow inside. Conductive liquid ingress, such as water, can cause damage resulting in fire or explosion. Store your battery in a cool, dry place, away from combustible and flammable items. Corrosive gas atmospheres must be avoided.
11. Do not give a strong shock to the switch panel or break it. It may lead to a trouble.

#### CAUTION

1. If liquid leaking from the battery gets into your eyes, do not rub your eyes and wash them well with fresh clean water such as tap water and contact a doctor immediately.  
If left untreated, the liquid may cause eye-problems.
2. If liquid leaks onto your skin or clothes, wash well with clean water such as tap water immediately.  
There is a possibility that this can cause skin irritation.
3. If you find rust, foul odor, overheating, discolor, deformation, and/or other irregularities when using the battery for the first time, do not use and return it to your supplier or vendor.

#### WARNING

If a conductive foreign matter enters in the terminal of lithium ion battery, the battery may be shorted, causing fire. When storing the lithium ion battery, obey surely the rules of following contents.

- Do not place conductive debris, nail and wires such as iron wire and copper wire in the storage case.
- To prevent shorting from occurring, load the battery in the tool or insert securely the battery cover for storing until the ventilator is not seen.

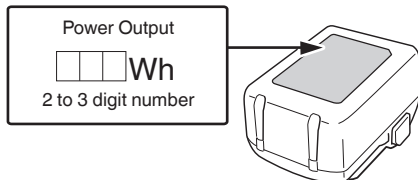
## REGARDING LITHIUM-ION BATTERY TRANSPORTATION

When transporting a lithium-ion battery, please observe the following precautions.

#### WARNING

Notify the transporting company that a package contains a lithium-ion battery, inform the company of its power output and follow the instructions of the transportation company when arranging transport.

- Lithium-ion batteries that exceed a power output of 100 Wh are considered to be in the freight classification of Dangerous Goods and will require special application procedures.
- For transportation abroad, you must comply with international law and the rules and regulations of the destination country.



## USB DEVICE CONNECTION PRECAUTIONS (UC18YSL3)

When an unexpected problem occurs, the data in a USB device connected to this product may be corrupted or lost. Always make sure to back up any data contained in the USB device prior to use with this product.

Please be aware that our company accepts absolutely no responsibility for any data stored in a USB device that is corrupted or lost, nor for any damage that may occur to a connected device.

#### WARNING

- Prior to use, check the connecting USB cable for any defect or damage.  
Using a defective or damaged USB cable can cause smoke emission or ignition.
- When the product is not being used, cover the USB port with the rubber cover.  
Buildup of dust etc. in the USB port can cause smoke emission or ignition.

#### NOTE




- There may be an occasional pause during USB recharging.
- When a USB device is not being charged, remove the USB device from the charger.  
Failure to do so may not only reduce the battery life of a USB device, but may also result in unexpected accidents.
- It may not be possible to charge some USB devices, depending on the type of device.

## NAMES OF PARTS








The numbers in the list below correspond to **Fig. 1–Fig. 18**.

1	Filling nozzle (connection for grease hose)
2	Vent valve
3	LED light
4	Metal eyelets
5	Dial
6	LED light switch
7	Trigger switch
8	On-lock button
9	Handle
10	Battery
11	Barrel
12	Bar handle
13	Shoulder belt
14	Hose
15	Off-lock button
16	Shift knob
17	Name plate
18	Hose holder
19	Hose LED

20	Plunger rod
21	Plunger rod catch
22	Hose cap
23	Plastic hook
24	Caupler
25	Latch
26	Charge indicator lamp
27	On/off switch
28	Silicone band
29	Crosshead screw
30	Button cells
31	Rubber plunge
32	Protrusion
33	Slot
34	Grease
35	Grease nipple
36	Clamping coupler (sold separately)
37	Remaining battery indicator switch
38	Remaining battery indicator lamp
39	Display panel

	Low gear position of the shift knob
	High gear position of the shift knob
	Warning









#### Battery

	Lights ; The battery remaining power is over 75%.
	Lights ; The battery remaining power is 50%–75%.
	Lights ; The battery remaining power is 25%–50%.
	Lights ; The battery remaining power is less than 25%.
	Blinks ; The battery remaining power is nearly empty. Recharge the battery soonest possible.
	Blinks ; Output suspended due to high temperature. Remove the battery from the tool and allow it to fully cool down.
	Blinks ; Output suspended due to failure or malfunction. The problem may be the battery so please contact your dealer.

## SYMBOLS

### WARNING

The following show symbols used for the machine.  
Be sure that you understand their meaning before use.

	AL18DA: Cordless Grease Gun
	To reduce the risk of injury, user must read instruction manual.
	Direct current
V	Rated voltage
	Switching ON
	Switching OFF
	Disconnect the battery
	Lock
	Unlock

## STANDARD ACCESSORIES

In addition to the main unit (1 unit), the package contains the accessories listed on page 18.

Standard accessories are subject to change without notice.

## APPLICATIONS


The grease gun is suited for greasing lubrication points on metal and similar materials that are usually lubricated with grease guns. Commercially available grease in cartridges or containers suitable for use in grease guns must be used.

## SPECIFICATIONS

### 1. Power tool

Model	AL18DA	
Voltage	18 V	
Grease capacity	450 g	
Discharge pressure	Low gear	69 MPa
	High gear	41 MPa
Discharge speed	Low gear	115 ml/min
	High gear	297 ml/min
Applicable grease type	NLGI No.0–No.2	

Hose length	1200 mm
Battery available for this tool	Multi volt battery, BSL18 series
Weight	5.0 kg (BSL36A18X)

ON/OFF at 0.1 sec. intervals (Intermittent buzzer sound: about 2 sec.) (PURPLE) 	Charging impossible *3
--	---------------------------

#### NOTE

- \*1 If the red lamp continues to blink even after the charger has been attached, check to confirm that the battery has been fully inserted.
- \*2 Battery overheated. Unable to charge. Although charging will start once the battery has cooled down even when left in situ, the best practice is to remove the battery and allow it to cool down in a shaded, well-ventilated location before charging.
- \*3 Malfunction in the battery or the charger
  - Fully insert the battery.
  - Check to confirm that no foreign matter is stuck to the battery mount or terminals. If there are no foreign objects, it is probable that the battery or charger is malfunctioning. Take it to your authorized Service Center.

#### NOTE

Due to HIKOKI's continuing program of research and development, the specifications herein are subject to change without prior notice.

## 2. Battery (sold separately)

Model	Voltage	Battery capacity
BSL36A18X	36 / 18 V *1	2.5 / 5.0 Ah *1

\*1 The tool itself will automatically switch over.

## CHARGING

Before using the power tool, charge the battery as follows.

### <UC18YSL3 (sold separately)>

#### 1. Connect the charger's power cord to the receptacle.

When connecting the plug of the charger to a receptacle, the charge indicator lamp will blink in red. (See **Table 1**)

#### 2. Insert the battery into the charger.

Firmly insert the battery into the charger as shown in **Fig. 4** (on page 2).

#### 3. Charging



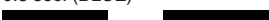



When inserting a battery in the charger, charging will commence and the charge indicator lamp will blink in blue.

When the battery becomes fully recharged, the charge indicator lamp will light up in green. (See **Table 1**)

##### (1) Charge indicator lamp indication

The indications of the charge indicator lamp will be as shown in **Table 1**, according to the condition of the charger or the rechargeable battery.

**Table 1:** Indications of the charge indicator lamp

ON/OFF at 0.5 sec. intervals (RED) 	Before charging *1
Lights for 0.5 sec. at intervals of 1 sec. (BLUE) 	Charged at less than 50%
Lights for 1 sec. at intervals of 0.5 sec. (BLUE) 	Charged at less than 80%
Lights continuously (BLUE) 	Charged at more than 80%
Lights continuously (Continuous buzzer sound: about 6 sec.) (GREEN) 	Charging complete
ON/OFF at 0.3 sec. intervals (RED) 	Overheat standby *2

- When the battery charger has been continuously used, the battery charger will be heated, thus constituting the cause of the failures. Once the charging has been completed, give 5 minutes rest until the next charging.

- (2) Regarding the temperatures and charging time of the battery (See **Table 2**)

**Table 2**

Model	UC18YSL3	
Type of battery	Li-ion	
Charging voltage	14.4–18 V	
Temperatures at which the battery can be recharged	0°C–50°C	
Charging time for battery capacity, approx. (At 20°C)	1.5 Ah	15 min
	2.0 Ah	20 min
	2.5 Ah	25 min
	3.0 Ah	20 min (BSL1430C, BSL1830C: 30 min)
	4.0 Ah	26 min (BSL1840M: 40 min)
	5.0 Ah	32 min
Charging time for multi volt battery capacity, approx. (At 20°C)	6.0 Ah	38 min
	1.5 Ah (× 2 unit)	20 min
	2.5 Ah (× 2 unit)	32 min
	4.0 Ah (× 2 unit)	52 min
Number of battery cells	4–10	
Charging voltage for USB	5 V	
Charging current for USB	2 A	
Weight	0.6 kg	

**NOTE**

- The recharging time may vary according to the ambient temperature and power source voltage.
- If charging takes a long time
  - Charging will take longer at extremely low ambient temperatures. Charge the battery in a warm location (such as indoors).
  - Do not block the air vent. Otherwise the interior will overheat, reducing the charger's performance.
  - If the cooling fan is not operating, contact a HiKOKI Authorized Service Center for repairs.

**4. Disconnect the charger's power cord from the receptacle.****5. Hold the charger firmly and pull out the battery.****NOTE**

Be sure to pull out the battery from the charger after use, and then keep it.

**Regarding electric discharge in case of new batteries, etc.**

As the internal chemical substance of new batteries and batteries that have not been used for an extended period is not activated, the electric discharge might be low when using them the first and second time. This is a temporary phenomenon, and normal time required for recharging will be restored by recharging the batteries 2–3 times.

**How to make the batteries perform longer.**

- (1) Recharge the batteries before they become completely exhausted. When you feel that the power of the tool becomes weaker, stop using the tool and recharge its battery. If you continue to use the tool and exhaust the electric current, the battery may be damaged and its life will become shorter.
- (2) Avoid recharging at high temperatures. A rechargeable battery will be hot immediately after use. If such a battery is recharged immediately after use, its internal chemical substance will deteriorate, and the battery life will be shortened. Leave the battery and recharge it after it has cooled for a while.

**MOUNTING AND OPERATION**

Action	Figure	Page
Removing and inserting the battery	3	2
Charging	4	2
Mounting the shoulder belt	5	2
Installing the hose LED and replacing the battery*1	6	3
Switch operation	7	3
Adjusting the discharge pressure and speed and discharge amounts*2	8	3
How to use the LED light and the hose LED*3	9	3
Filling the grease with a cartridge*4	10	4
Filling the grease from a bulk container*4	11	5
Filling the grease using a filler pump*4	12	6
Air purge*5	13	7

Action	Figure	Page
Grease discharging*6	14	7
Mounting clamping coupler (sold separately)	15	7
Remaining battery indicator	16	8
Charging a USB device from an electrical outlet	17-a	8
Charging a USB device and battery from an electrical outlet	17-b	8
How to recharge USB device	18	8
Selecting accessories	—	19

\*1 Installing the hose LED and replacing the battery  
Remove 2 button cells CR1620 and insert new batteries CR1620 into the cover. Pay attention to the polarity!

\*2 Adjusting the discharge pressure and speed (by means of the shift knob) and discharge amounts (by means of the dial)

**NOTE**

The shift knob can not be switched while the power tool is turning. To switch the shift knob, stop the power tool, then set the shift knob.

- Select discharge pressure and speed by means of shift knob

Low gear:

Working pressure 69 MPa,

discharge rate 115 ml/min

High gear:

Working pressure 41 MPa,

discharge rate 297 ml/min

- **Select number of strokes by means of dial:**

Select the respective number of strokes (1–25) by selecting the positions 1–25. Position "on" corresponds to the continuous stroke during switch actuation.

**Table 3**

Position of the dial	Low gear	High gear
	ml (g)	ml (g)
1	0.8 (0.8)	0.8 (0.8)
2	1.7 (1.6)	1.7 (1.6)
3	2.4 (2.3)	2.5 (2.4)
5	4.1 (3.9)	4.1 (3.9)
8	6.4 (6.1)	6.4 (6.1)
10	7.9 (7.6)	8.0 (7.7)
15	11.9 (11.4)	11.9 (11.4)
20	15.9 (15.2)	16.0 (15.3)
25	19.8 (19.0)	19.9 (19.1)

- \*3 How to use the LED light and the hose LED  
The LED light switches off automatically after 60 seconds of not being operated.  
The hose LED switches off automatically after 15 seconds.

\*4  
**WARNING**

The bar handle must be firmly engaged to prevent uncontrolled loosening.

**NOTE**

If the plunger rod does not go inside, rotate the bar handle 1/4 to 1/2 of a rotation so that the protrusion of the plunger rod fits into the slot while pushing.  
(Fig. 10-a, 11-a, 12-a)

In the following situations, remove the old grease from inside the tool before use.

- (1) When using for the first time
- (2) When using a different type of grease than was used the previous time

After filling with new grease, move the tool body for a while until the new grease pushes the old grease out of the coupler.

**CAUTION**

Do not connect the grease nipple to the coupler until all of the old grease has come out. If the greases mix together, the performance may decrease.

**NOTE**

A small amount of grease remains inside the tool from when it was tested before shipment.

\*5 Air purge

When filling or replacing grease, some air gets inside the tool body.

If grease is not discharged because of air inside the tool, set the shift knob to "2", and pull the trigger switch to purge the air. (Fig. 13-a)

If a large amount of air is inside, while pulling the trigger, press the vent valve to purge the air. (Fig. 13-b)

\*6 Grease discharging

**CAUTION**

When attaching or removing the coupler from the grease nipple, using excessive force may damage the coupler and grease nipple.

Before connecting the coupler and grease nipple, clean off any dirt. Face the coupler toward the grease nipple and press it in straight from directly above.

Pull the trigger switch to inject grease.

After injecting, slightly tilt the coupler to release the internal pressure before removing it.

Wipe off any grease adhered to the coupler and grease nipple to clean them.

**NOTE**

If the cause of the overburdening is not removed, and the battery is replaced and the switch is repeatedly turned ON 3 times, the tool becomes unusable for 1 minute.

One minute later, after the LED has automatically turned off, the tool can be used as normal.

**MAINTENANCE AND INSPECTION**

**WARNING**

Be sure to turn off the switch and remove the battery before maintenance and inspection.

**1. Inspecting the mounting screws**

Regularly inspect all mounting screws and ensure that they are properly tightened. Should any of the screws be loose, retighten them immediately. Failure to do so could result in serious hazard.

**2. Maintenance of the motor**

The motor unit winding is the very "heart" of the power tool. Exercise due care to ensure the winding does not become damaged and/or wet with oil or water.

**3. Inspection of terminals (tool and battery)**

Check to make sure that swarf and dust have not collected on the terminals.

On occasion check prior, during and after operation.

**4. Cleaning on the outside**

When the power tool is stained, wipe with a soft dry cloth or a cloth moistened with soapy water. Do not use chloric solvents, gasoline or paint thinner, for they melt plastics.

**5. Storage**

Store the power tool and battery in a place in which the temperature is less than 40°C and out of reach of children.

**NOTE**

Storing lithium-ion batteries.

Make sure the lithium-ion batteries have been fully charged before storing them.

Prolonged storage (3 months or more) of batteries with a low charge may result in performance deterioration, significantly reducing battery usage time or rendering the batteries incapable of holding a charge.

However, significantly reduced battery usage time may be recovered by repeatedly charging and using the batteries two to five times.

If the battery usage time is extremely short despite repeated charging and use, consider the batteries dead and purchase new batteries.

**CAUTION**

In the operation and maintenance of power tools, the safety regulations and standards prescribed in each country must be observed.

**LED LIGHT WARNING SIGNALS**

This product features functions that are designed to protect the tool itself as well as the battery. If any of the safeguard functions are triggered during operation, the LED light will blink as described in **Table 4**.

When any of the safeguard functions are triggered, immediately remove your finger from the switch and follow the instructions described under corrective action.

**Table 4**

LED Light Display	Safeguard Function
On 0.5 second/ Off 0.5 second ■■■■ ■■■■ ■■■■ Blinks while protection is in effect.	<b>Overburden protection</b> Remove the battery, and remove the cause of the overburdening. Then, install the battery again and pull the switch, and the tool will operate.

**Important notice on the batteries for the HiKOKI cordless power tools**

Please always use one of our designated genuine batteries. We cannot guarantee the safety and performance of our cordless power tool when used with batteries other than these designated by us, or when the battery is disassembled and modified (such as disassembly and replacement of cells or other internal parts).

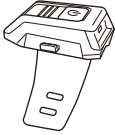
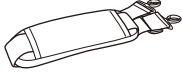


---

**NOTE**

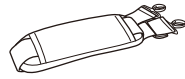
Due to HiKOKI's continuing program of research and development, the specifications herein are subject to change without prior notice.

---

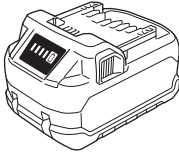
	AL18DA
	(NN)
	1
	1



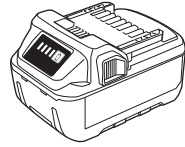
381540



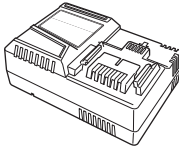
381541



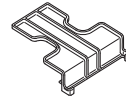
BSL36..18..



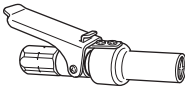
BSL18..



UC18YSL3 (14.4 V-18 V)



329897



381544

# Koki Holdings Co., Ltd.

Shinagawa Intercity Tower A, 15-1, Konan 2-chome,  
Minato-ku, Tokyo, Japan