

BCS Soft Wash

Facade and Roof Washing

Preparations:

Inspect surfaces that need cleaning.

Remove any loose objects or debris from the area.

Protect sensitive materials, plants, and anything else that should not be exposed to soft wash.

Use protective equipment such as safety glasses, gloves, work clothes, and, in case of inadequate ventilation, a mask with Combination Filter A2P Class 2/3 Brown/White.

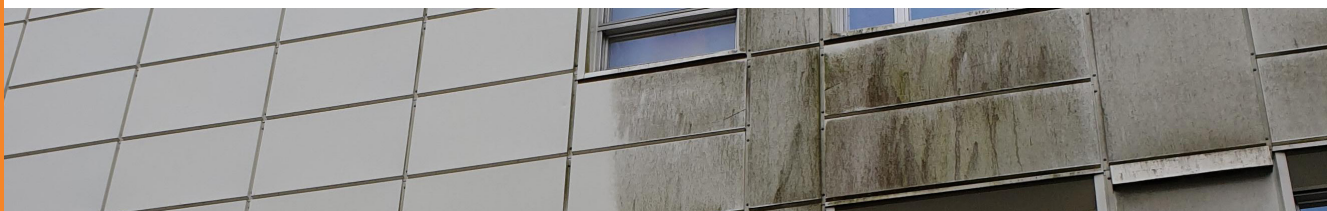
Set the correct dosage:

Follow the instructions on the label to mix the soft wash solution, adjusting as needed.

Typically, soft wash is mixed with water in different proportions depending on the degree of dirt on the facade.

BCS Soft Wash is mixed with cold water in various proportions (5 – 30%), depending on the level of dirt on the facade and the desired effect.

This is preferably done with customized pump/injector equipment, where the chemicals are drawn into an application hose/lance to form a ready-to-use solution during application or with a low-pressure sprayer.



Soft wash solution:

Use customized dilution of soft wash according to test area. Alternatively, use a foam sprayer, a low-pressure pump, or a brush to apply the soft wash solution to the facade surface.

Work from bottom to top and ensure even coverage of the entire surface.

Avoid spraying on windows or other sensitive surfaces. If the solution comes into contact with such surfaces, immediately rinse with clean water.

Add a foaming booster to achieve a good, foaming effect that allows the detergent to adhere to the surface longer.

Extended dwell time always yields good results. Must not dry on glass, glossy surfaces, and metals.

Always perform a test to determine if the surface can withstand the product.



Signal word: Danger

Continuation page 2

This product information is intended for guidance only. MPE International does not accept responsibility for the final outcome. If uncertain, please contact MPE International for advice.

BCS Soft Wash

Facade and Roof Washing

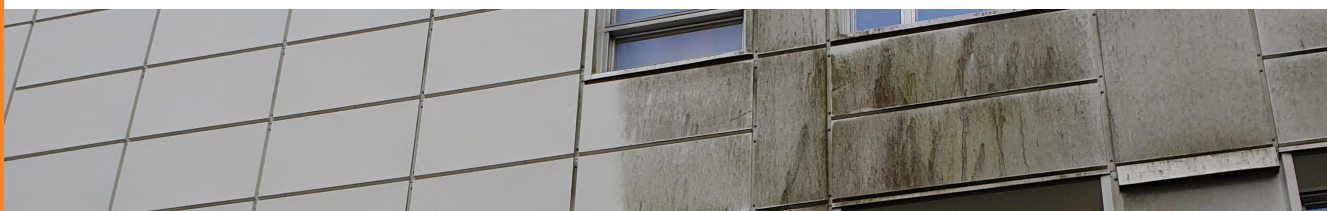
Let the solution take effect:

Allow the soft wash solution to take effect for a few minutes or up to an hour, depending on the level of dirt and the type of soft wash product.

Rinse off:

After the solution has been allowed to take effect for a sufficient amount of time, rinse the facade with clean water. Use a low-pressure washer or a high-pressure washer with adjusted pressure to rinse off the solution. Rinse thoroughly to ensure that all solution has been removed.

Repeat if necessary: If there is still dirt or stains remaining, you can repeat the process or use a brush to thoroughly clean the area.



Packaging: 10 or 25 liters, can

Storage: Frost-free in original packaging

Shelf life: Max 6 months in unopened packaging

pH: 12

Consumption: Approximately 0.1-0.3 liters/square meter

ADR: UN1791, HYPOCHLORITE SOLUTION, 8, III (E)

Protective equipment:

Do not inhale vapors/mist. (P260). Use eye protection/protective gloves/protective clothing. (P280). IN CASE OF SKIN CONTACT (or hair): Remove contaminated clothing immediately. Rinse skin with water. (P303+P361+P353)

IN CASE OF CONTACT WITH EYES: Gently rinse with water for several minutes. Remove any contact lenses if easy to do. Continue rinsing. (P305+P351+P338)

There should be access to rapid and abundant eye rinsing facilities near the workplace.

For further information and description of first aid measures, refer to the specific safety data sheet.



Signal word: Danger

This product information is intended for guidance only. MPE International does not accept responsibility for the final outcome. If uncertain, please contact MPE International for advice.