

NOOL

LIVING WITH GRACE

Users Manual

80711152600-977-2507

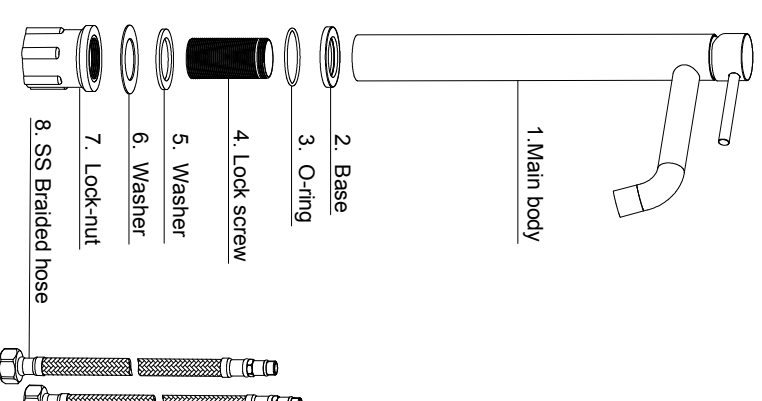
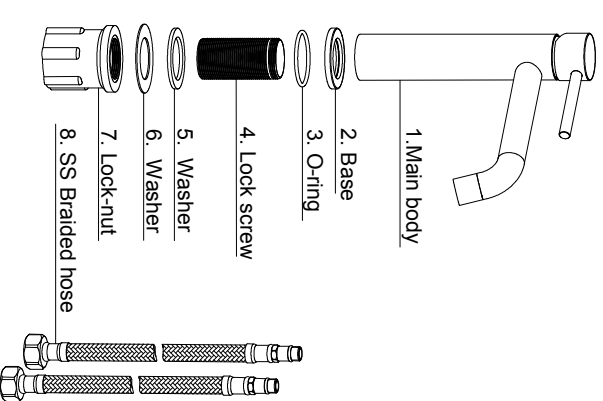
1、Installation Notice

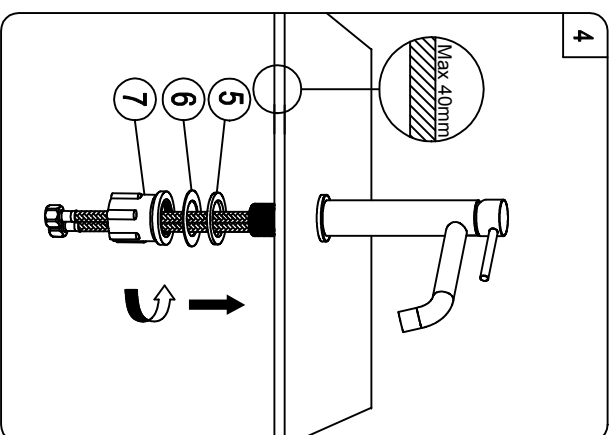
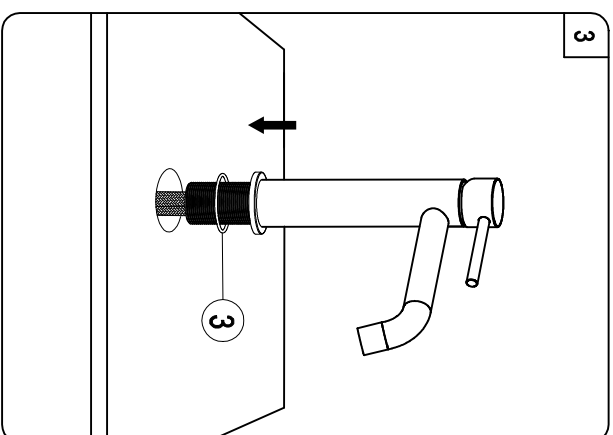
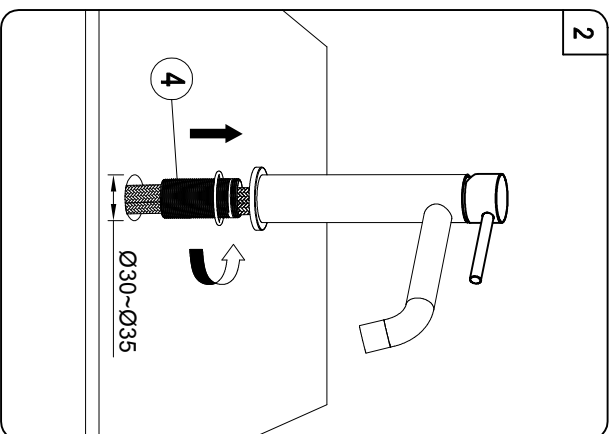
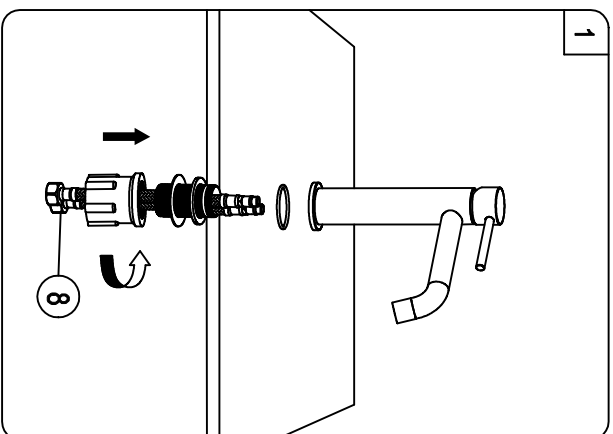
- 1.1、Please double-check the accessory list hereinafter and contact our distributor for any unconformity.
- 1.2、Please do not attempt to disassemble the main body as it has been installed & commissioned correctly & precisely before leaving the factory.
- 1.3、The hot water supply should be connected to the left and the cold water supply to the right, when viewed from the operating position. If this is not taken into account can cause permanent damage to the cartridge.
- 1.4、Supply lines should be purged to clean impurities before connecting the unit.
- 1.5、The water pressure is 0.05MPa-1.0MPa (including cold & hot water pressure), suitable for water temperature is from 4℃ to 90℃.
- 1.6、Without affecting their performance, accessories may be changed without further notice.
- 1.7、Warm reminder:
In the cold areas or the indoor temperature is less than 4℃ in winter, if no using the faucets for a long time, please turn off the inlet water valve and drain the remaining water inside the supply pipe, which can avoid the faucet damage caused by the expansion of the frozen water.

2、Installation Preparation

- 2.1、Please read users manual carefully before installation.
- 2.2、The installation must be performed by a qualified person.

3、Installation processes





4、Installation Instruction

- 4.1、 Turn on the water to double-check whether there is any leakage in each connector.
- 4.2、 Open the handle of the faucet. Normally, the wider the angle is, the larger the flow rate is and vice versa.
- 4.3、 When open the mixer, if turn the handle to the left, there will be hotter water flow and vice versa.

5、Cleaning & Maintenance

To keep the product clean& shining, follow the steps as follows:

- 5.1、 Flush with clean water & dry with soft cloth only;
- 5.2、 If any dirt, clean with soft liquid or transparent glass detergent.
- 5.3、 Do not use any scrubbing detergent, polisher, sand-cloth, paper tissue or scraper.
- 5.4、 Do not use acid detergent, insoluble & grain-like detergent or soap.