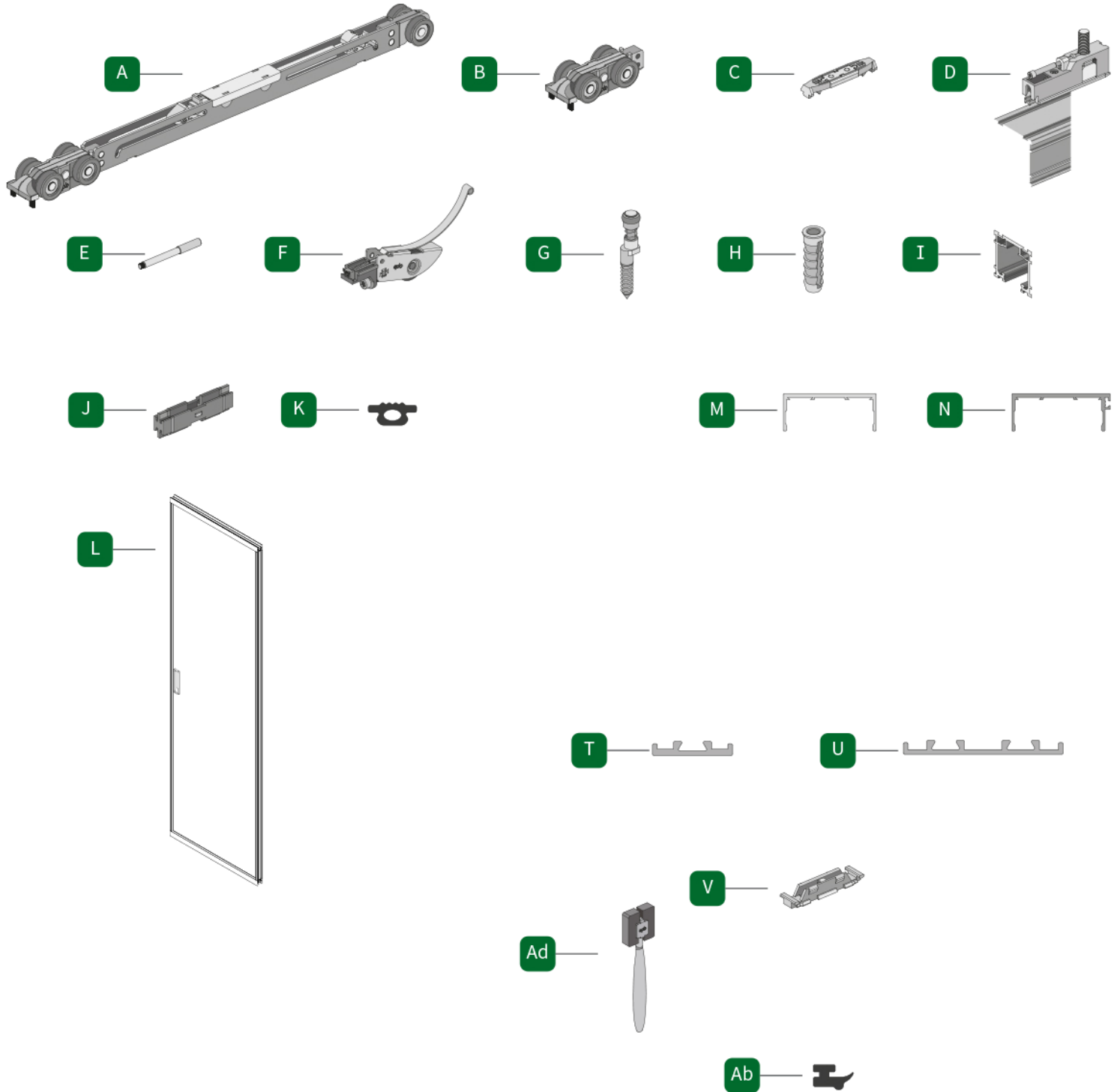


Double door installation manual



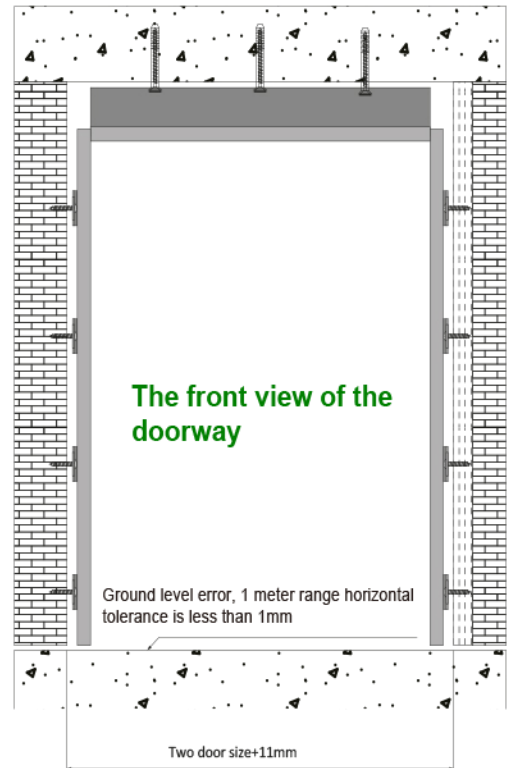
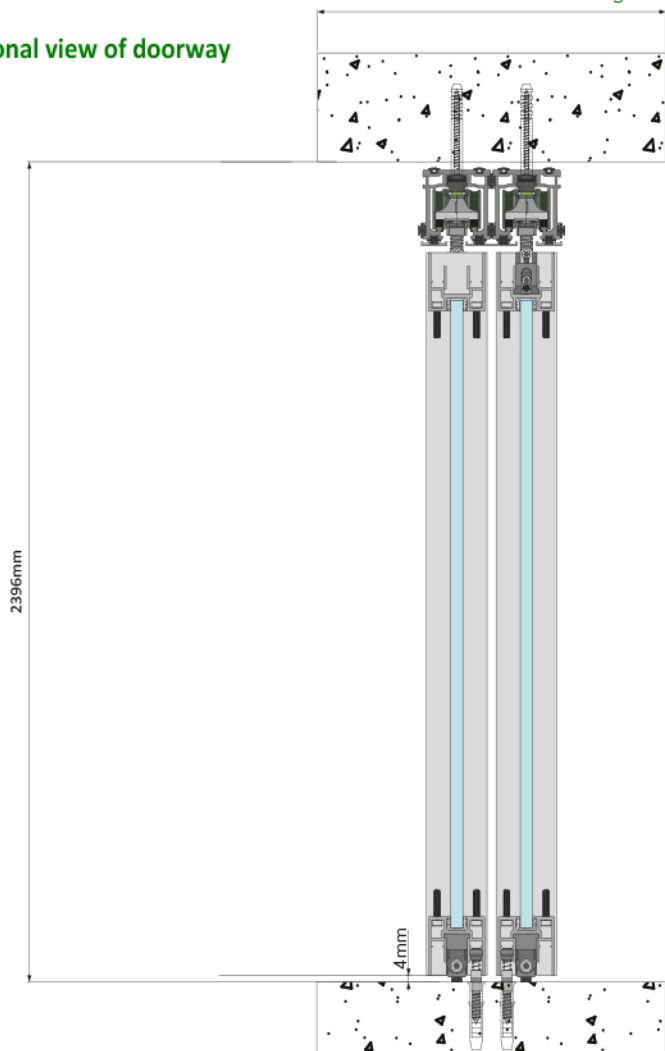
NOLLI

LIVING WITH GRACE

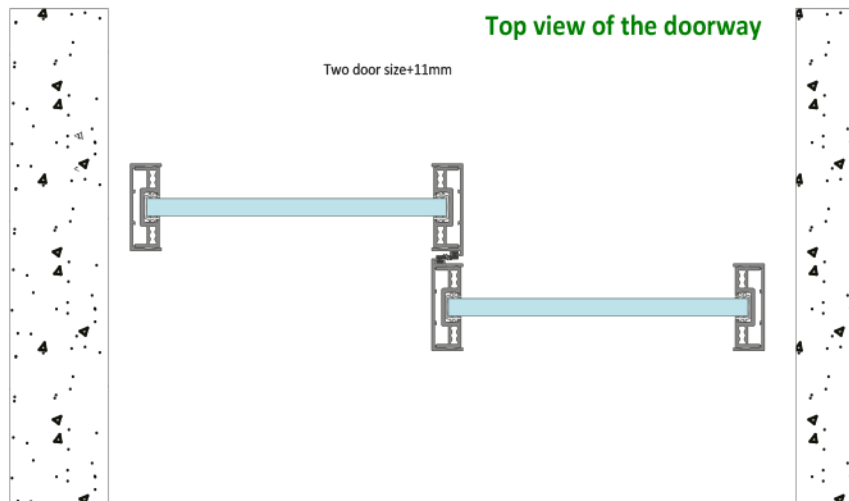


The wall thickness needs to be greater than 105mm

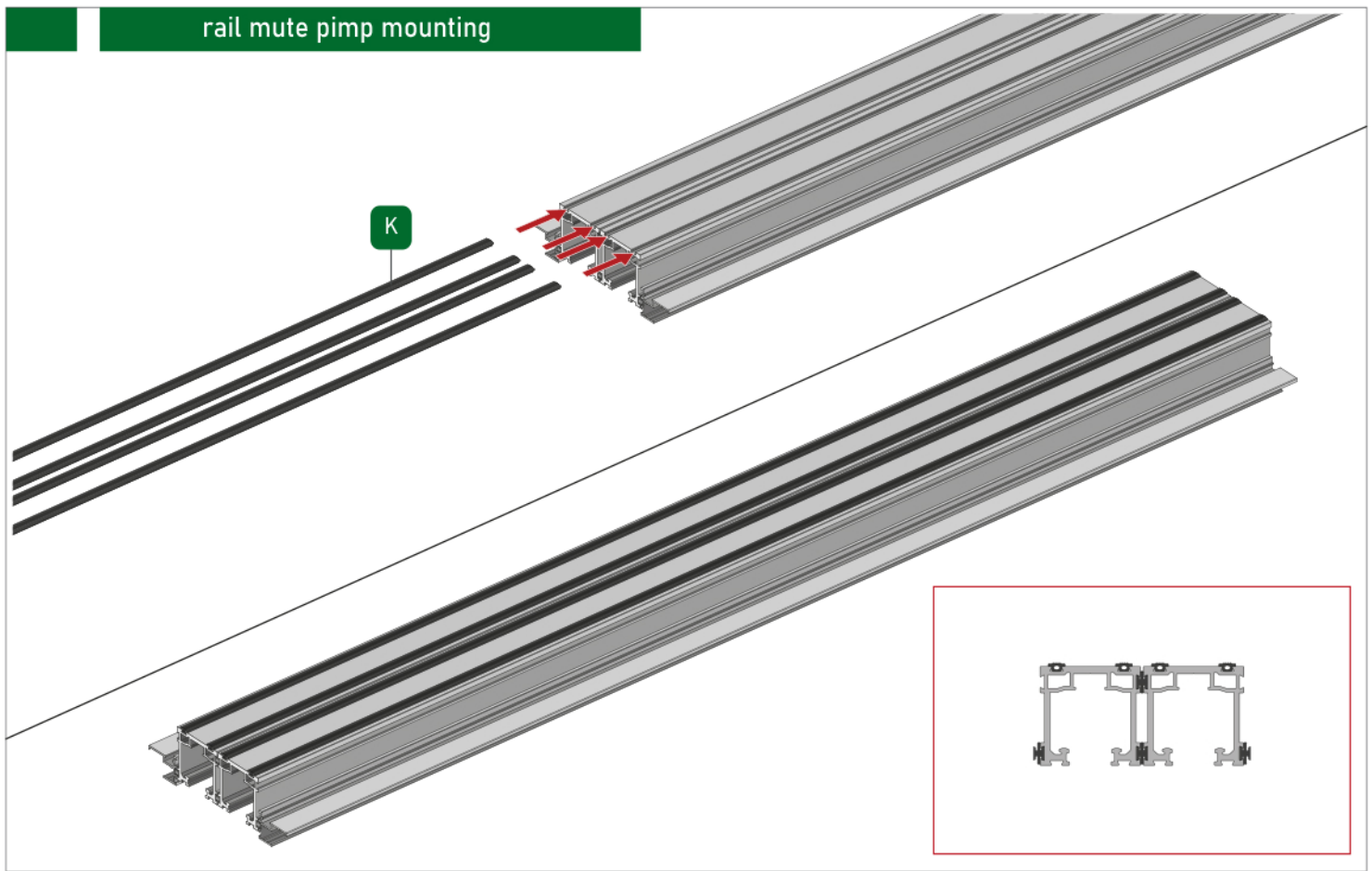
Sectional view of doorway



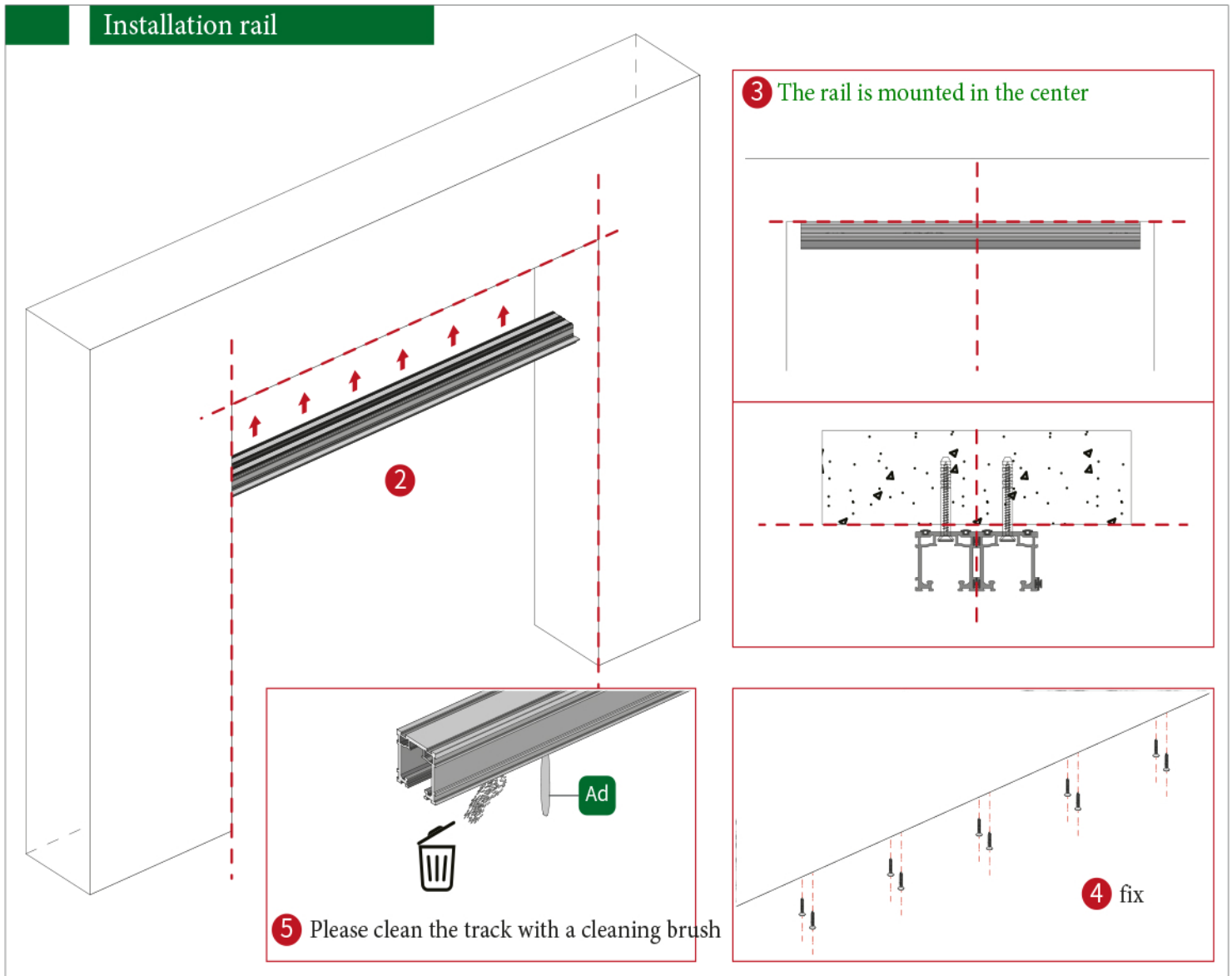
Top view of the doorway



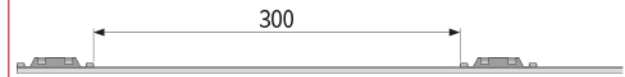
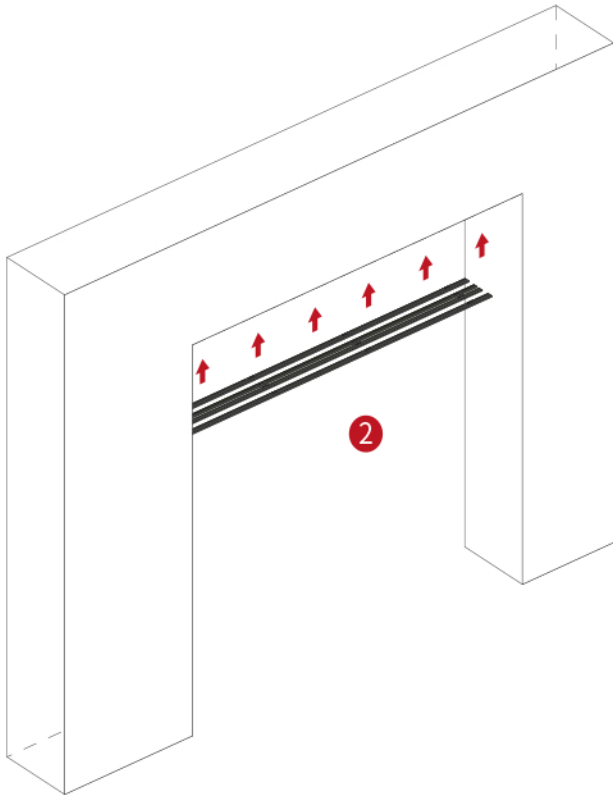
rail mute pimp mounting



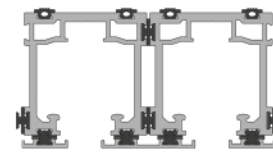
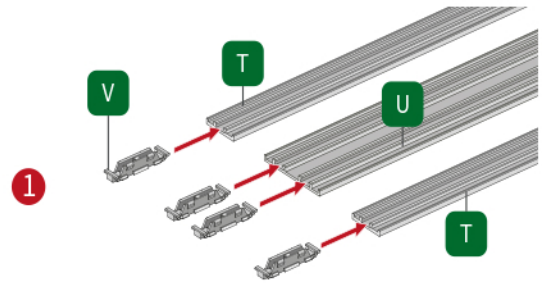
Installation rail



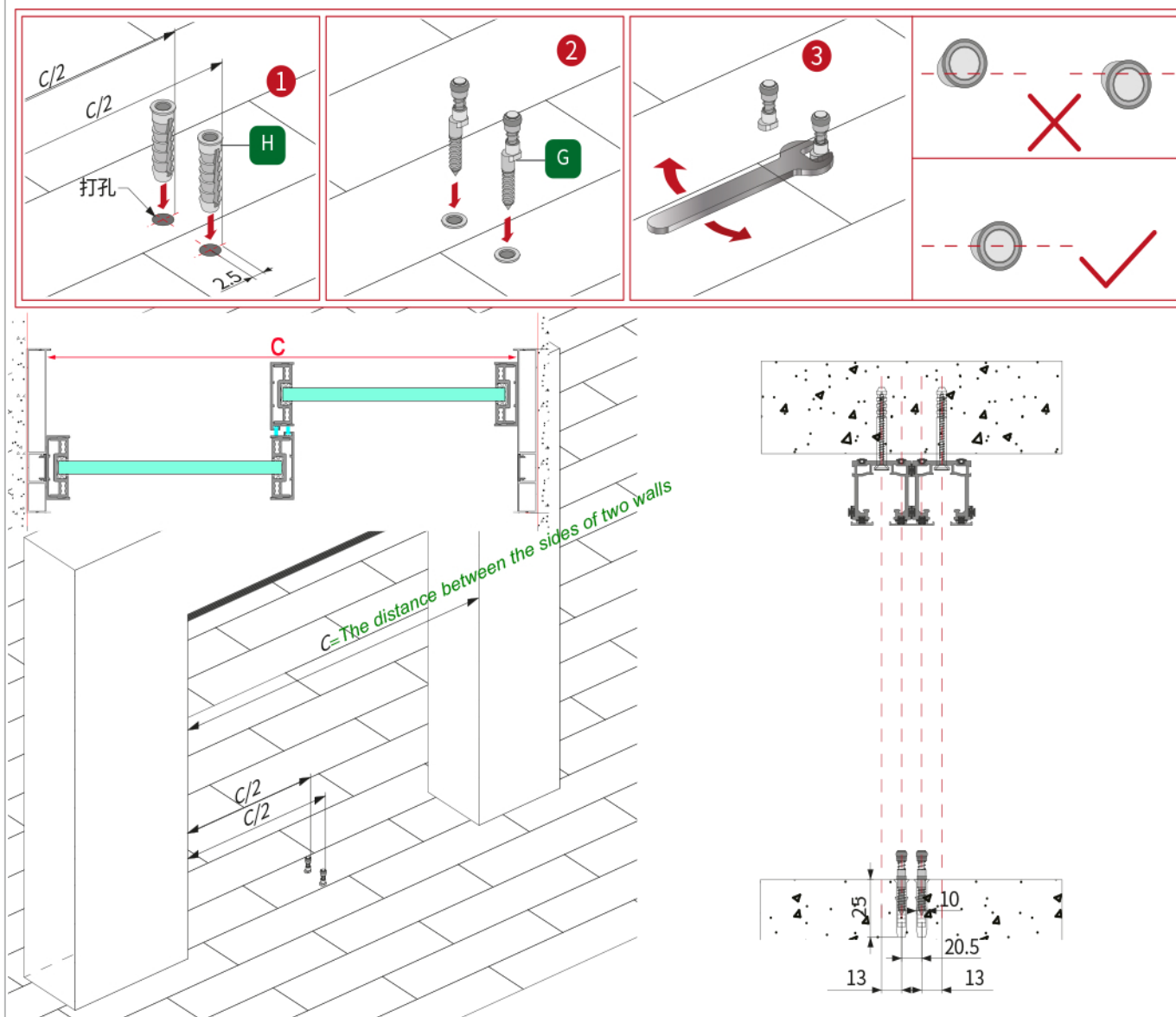
Install the rail trim cover



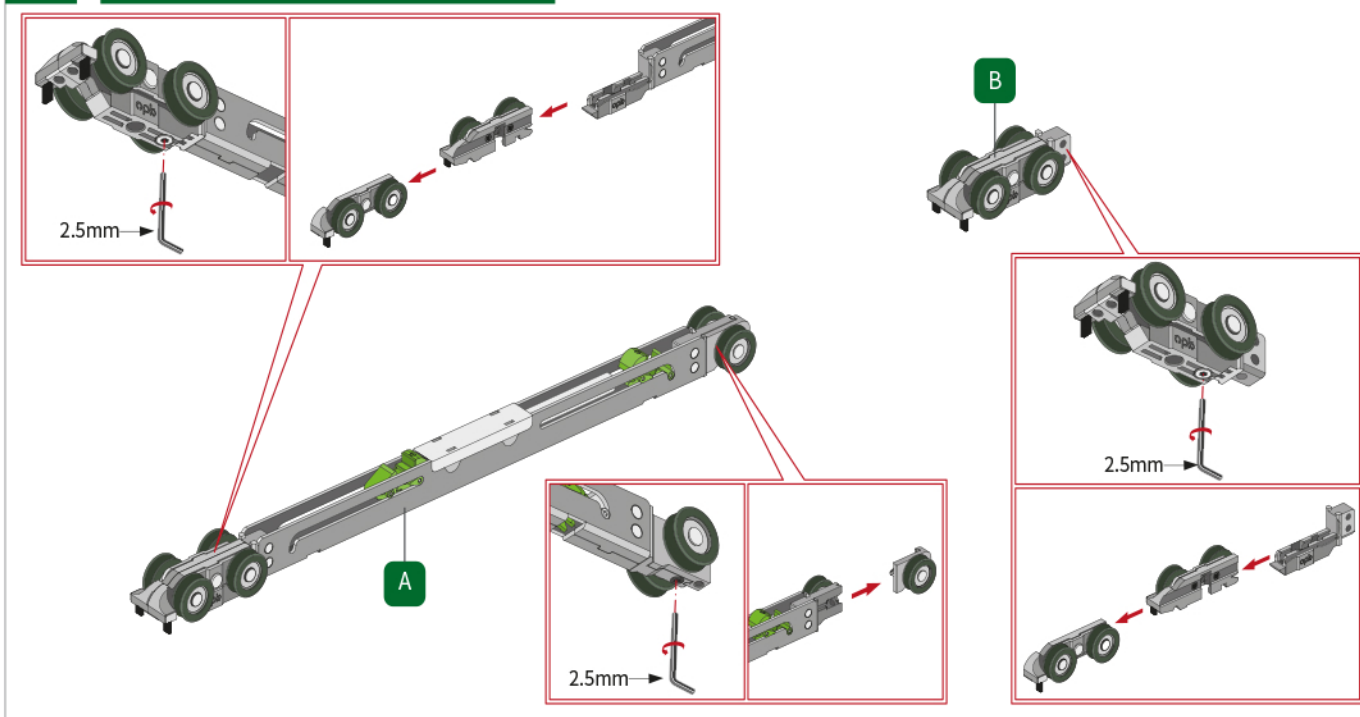
! Place one unit every 300mm



Positioning under installation



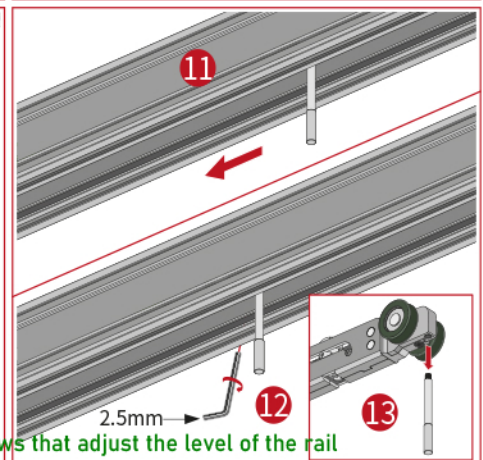
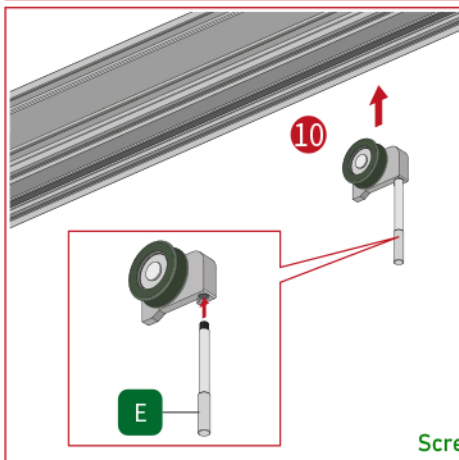
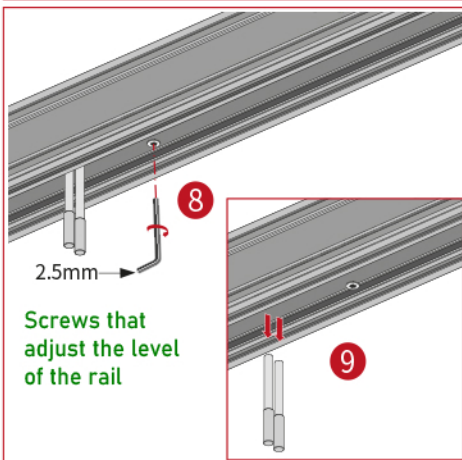
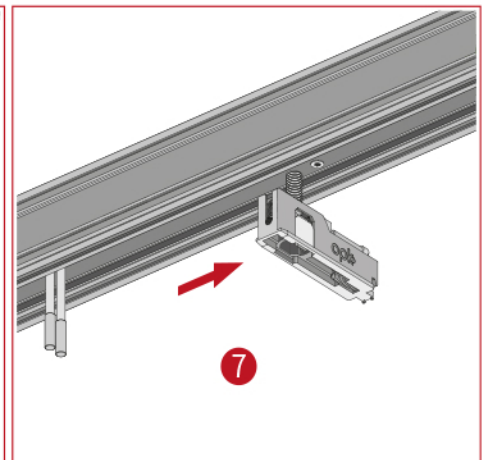
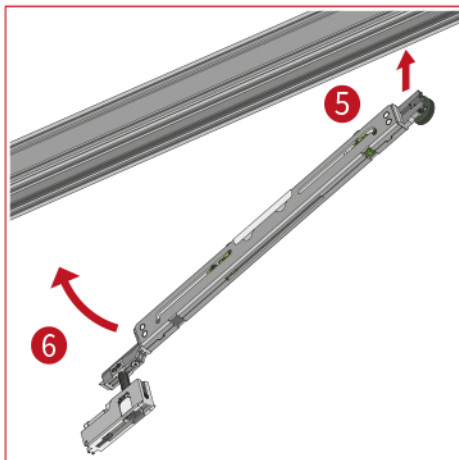
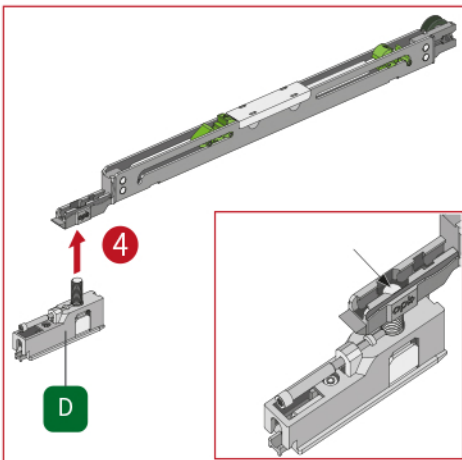
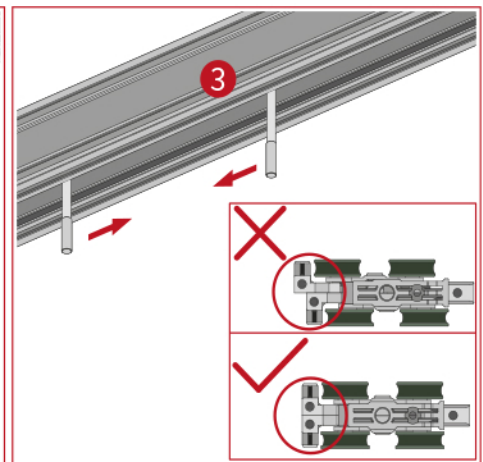
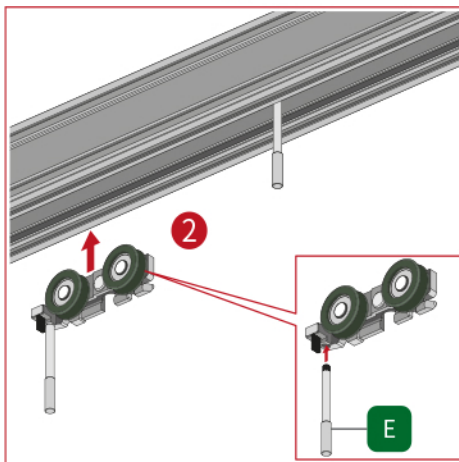
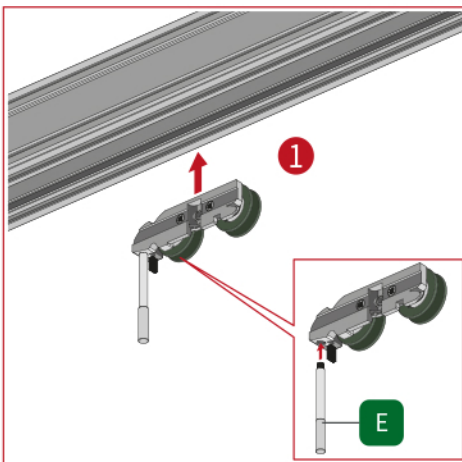
Disassemble the upper pulley



Install the upper wheel

rail hole 1

rail hole 2



2.5mm

Screws that
adjust the level
of the rail

9

E

Screws that adjust the level of the rail

2.5mm

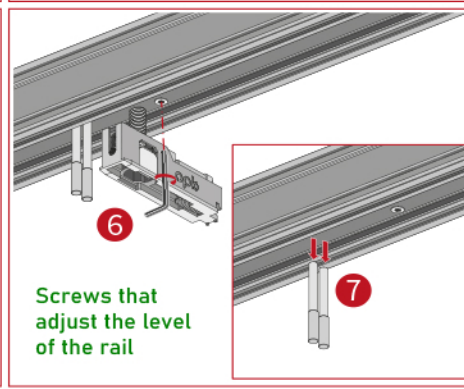
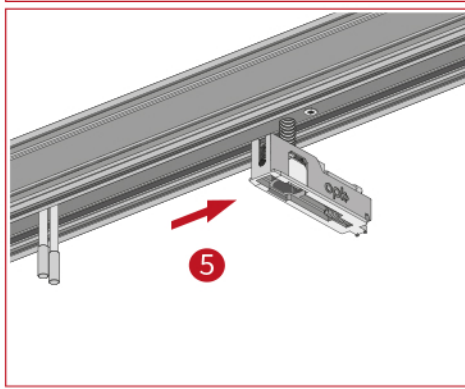
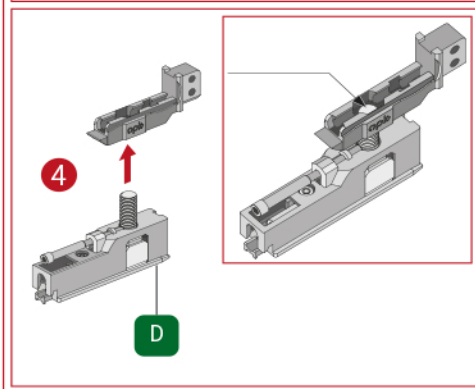
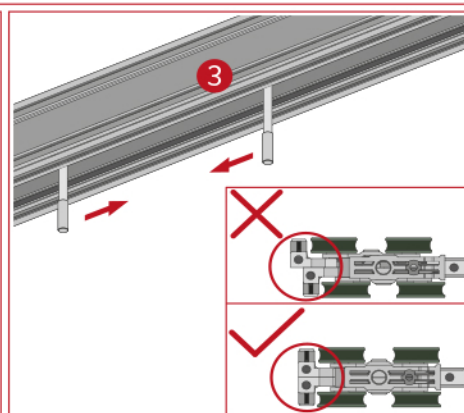
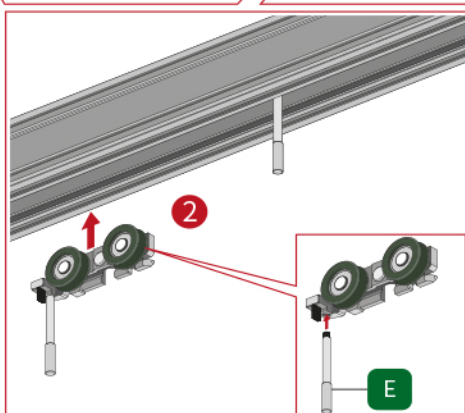
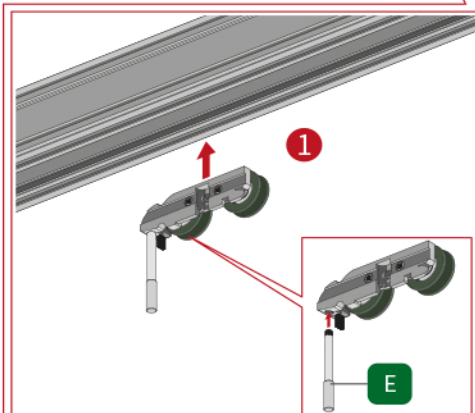
12

13

Install the upper wheel

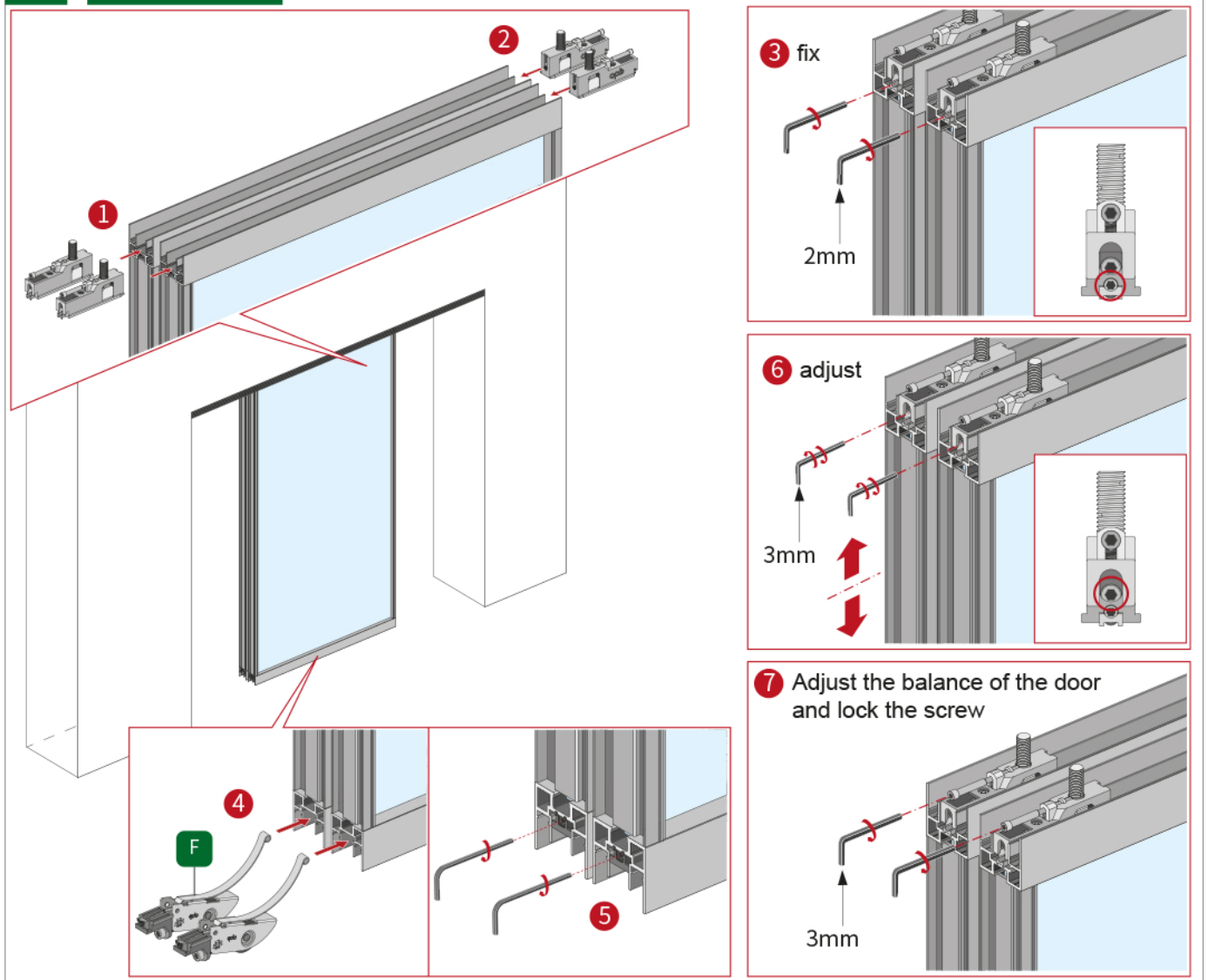
rail hole 1

rail hole 2

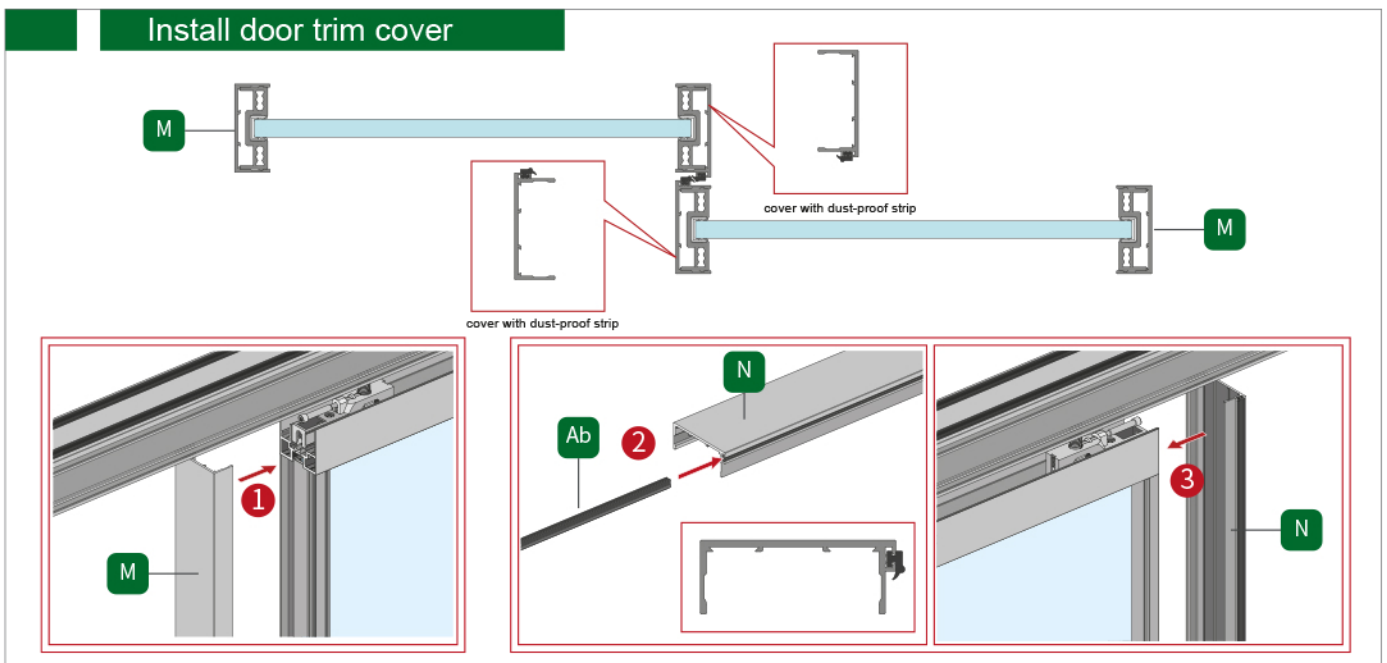


7

Door install



Install door trim cover



Install limit components

