

NOOL

LIVING WITH GRACE Thermostatic rain bath shower faucet

INSTALLATION MANUAL

The instructions are only for installation reference, and the specific configuration should be subject to the real object

80711449800S2-977-2507

1、Application

Thermostatic mixing valves are designed to provide comfort and save energy and water, offering the highest accuracy of the desired temperature.
All mixing valves are adjusted in factory at a flow pressure of 3 bar on both sides.
The performance of such devices is optimal with any type of boiler or heater.
See parameters of temperature and pressure flow.

2、Technical Data

Minimum flow pressure without downstream resistance	0.5 bar
Minimum flow pressure with downstream resistances	1 bar
Maximum operating pressure	6 bar (1)
Recommended flow pressure	1 - 5 bar (1)
Maximum water temperature at hot water inlet	80°C
Recommended water temperature at hot water inlet	60 - 70°C
Hot water temperature at supply should be min. 2°C higher than mixed water temperature.	
Temperature range	15 - 50°C
Flow rate at 3 bar flow pressure	6 - 12l / min (2)
Safety stop	38°C (3)
(1) At a flow pressure over 5 bar it is recommended that a pressure reducing valve be fitted in the supply line.	
(2) Flow rate is adjustable and will vary according to temperature and flow pressure	
(3) The 38°C safety stop is based upon a hot water inlet temperature of 65°C and cold water inlet temperature of 12°C under a flow rate pressure of 3 bar. The temperature will vary according to temperature and flow pressure but can be set accurately to 38°C at the time of installation	

3、New Installations

NOTE!!!

Supply lines should be purged to clean impurities before connecting the unit.
The hot water supply should be connected to the left and the cold water supply to the right, when viewed from the operating position. If this is not taken into account can cause permanent damage to the cartridge.
Screw connections and test for leaks.

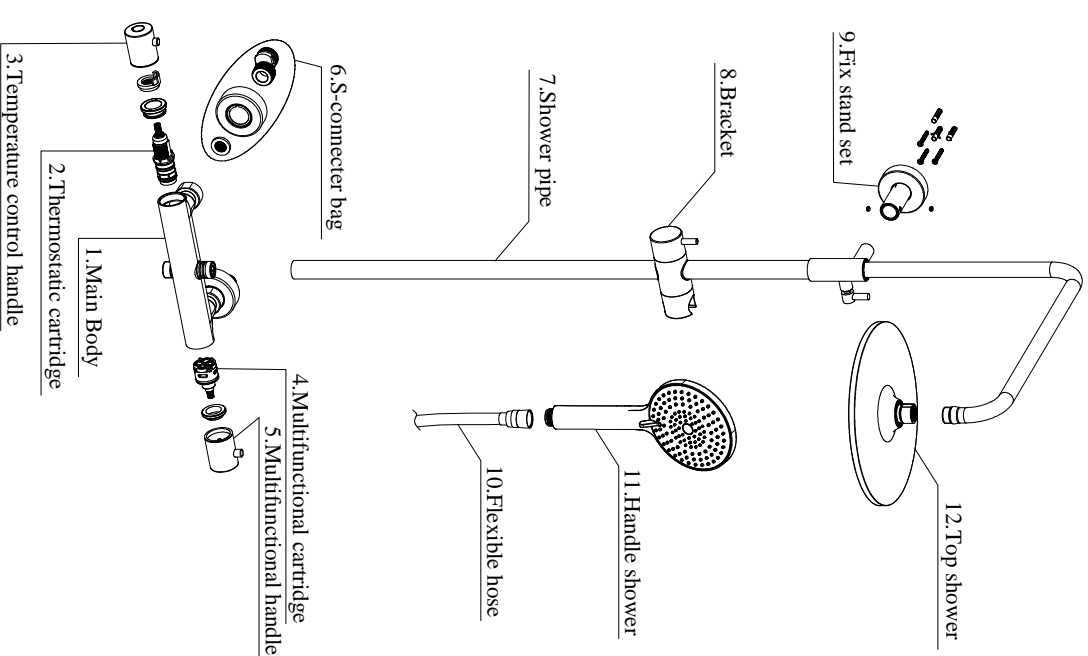
Using a spirit level on the cans, the mixer align horizontally, vertically and parallel to the wall.

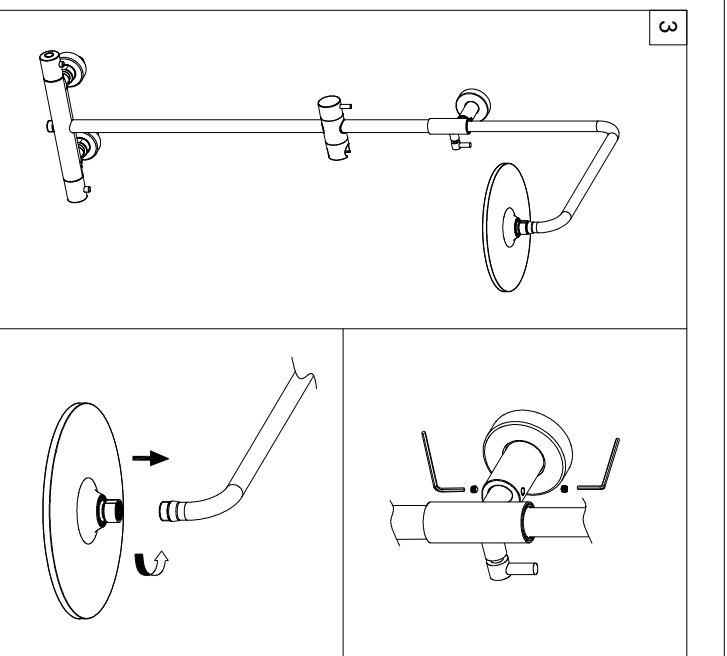
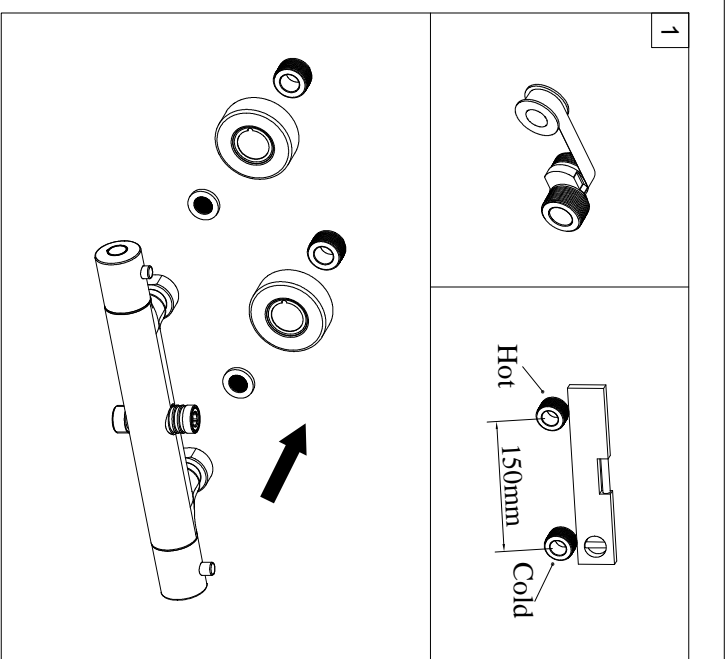
Warm reminder:

In the cold areas or the indoor temperature is less than 4 °C in winter, if no using the faucets for a long time, please turn off the inlet water valve and drain the remaining water inside the supply pipe, which can avoid the faucet damage caused by the expansion of the frozen water.

4、Installation

- Read the instructions carefully before installing.
- The installation must be performed by a qualified person.





5. Temperature Limitation

The safety stop limits the temperature range of 38°C, by pressing the button on the thermostatic handle, the temperature limit may be canceled and get a higher temperature.

6. Thermostatic Cartridge

To ensure long-lasting functionality of this product, we recommend regular maintenance and care.

To get the thermostatic cartridge, inserted under pressure, use a picking needle to pick the decorative button, then use a Phillips screwdriver to loosen the screw to remove the handwheel, remove the positioning sleeve and use pointed nose pliers to twist open the cover, as shown in the image.

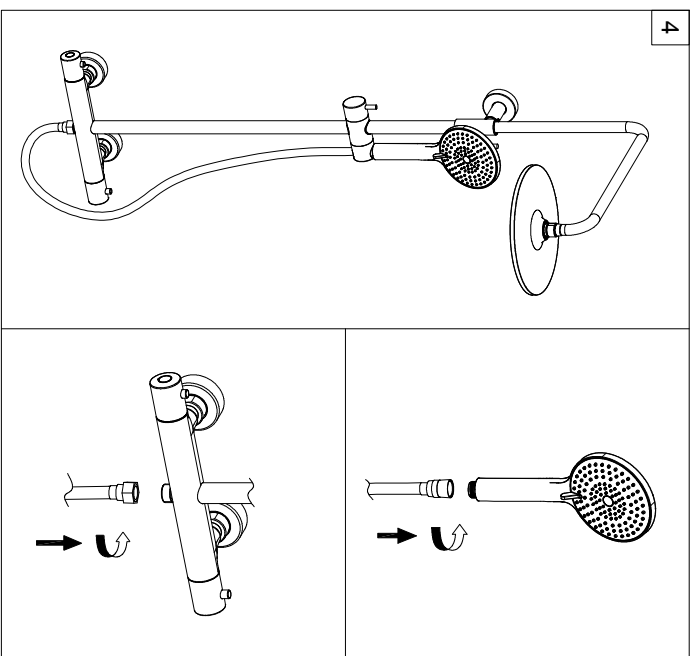
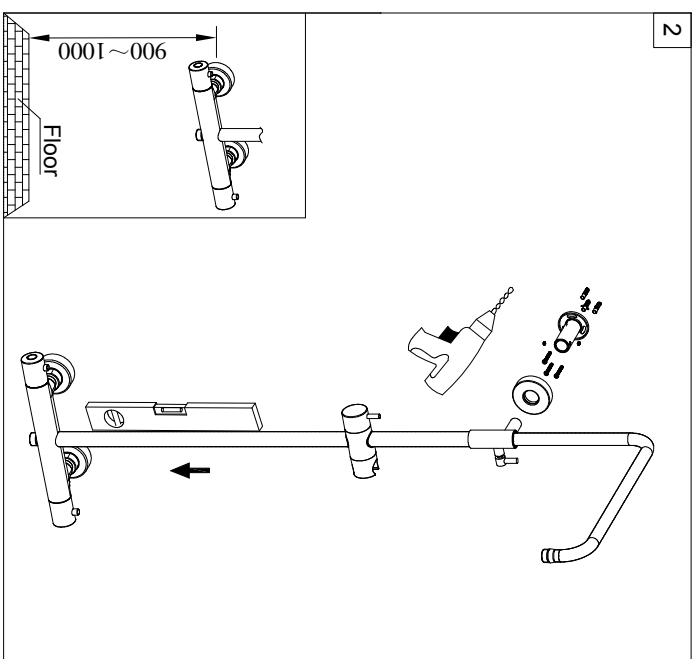
Impurities and lime must clean with vinegar or softener, and lubricate the join with thermo-resistant grease or oils.

Proceed to re-install the cartridge making operation in reverse order.

①

②

Exposed Faucet



7. Cleaning and Maintenance

To remove lime stains from the surface of the taps, just soap and water, or with specific products for chrome, rinse thoroughly and dry with a cloth. Avoid acidic detergents, scouring pads or steel wool, as it can damage the chrome parts. Cleaning of plastic or rubber parts, is made with the same care as chrome surfaces, avoiding the use of solvents, detergents or alcohol-based product.

- The aerator should be cleaned regularly to prevent clogging.
- In hard water areas will require more frequent cleaning.

8. Problems and Solutions

If there is no hot or cold water
Check that the pipes or filters are not clogged, that the pressures are balanced and that the thermostatic cartridge has no impurities.

If the movement of the thermostatic cartridge is hard / difficult
Leaving the water running, move the handle thermostatic repeatedly until the movement is smoother