

Jessie - Compression bolero/compression sleeves

ART.NO 51212

Long sleeved compression bolero in knitted seamless material. Recommended after arm liposuction and/ or surgery. The bolero can be opened at the front under the bust with hook and eye fastening for easy application, removal and adjustment of fit. Elastic, flexible material in 4-way stretch for a body-contouring fit. Relieves and compresses around the entire arm and armpit without cutting in or feeling uncomfortable to use. Knitted zones in arm crease and over the back to ensure comfortable fit.

Indications: Compression garment after plastic surgery. Corresponding class 1 compression.

Contraindications: Infection. Arterial circulatory disorders. High risk of thrombosis.

Material: 87% Polyamide, 13% Elastane. Latex free.

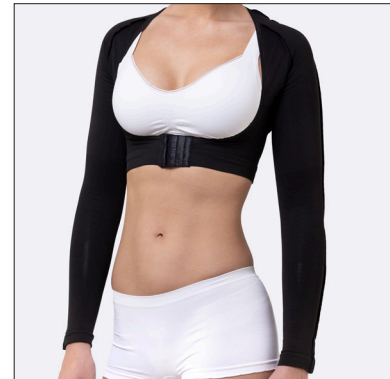
Washing instructions: Machine wash 40°C, can be washed if necessary to a maximum of 60°C. The product lasts longer when washed in lower temperatures. Use a laundry bag. Do not use bleach, chlorine or softener. Do not tumble dry.

Measurement: For the best fit and correct degree of compression, it is important that the garment is tested carefully according to the measurement table. The garment should feel firm to use but must not feel uncomfortable or too tight to use.

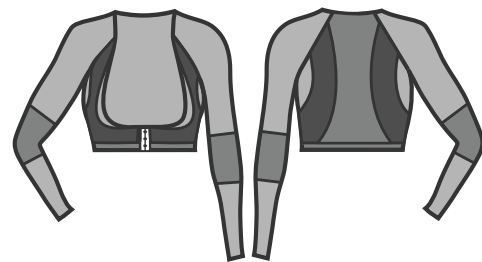
Upper arm: Measure the circumference at the largest part of the upper arm (biceps).

Under bust: Measure the circumference directly beneath the bust.

Size	Under bust cm	Arm (biceps) cm	Art.no Black
XS	63-70	22-25	512120030
S	70-77	25-28	512120040
M	75-82	28-31	512120050
L	80-87	30-33	512120060
XL	85-92	31-34	512120070
2XL	90-97	33-36	512120080



Openable front with hook and eye for easy application.



Compression class I



Seamless



Adjustable with hook & eye



4-way stretch



STANDARD 100

6234-7001 DTI

www.oeko-tex.com

