

# Next generation compression garments

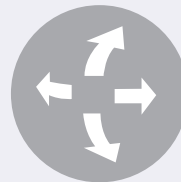
A unique product assortment combining the most comfortable fabric together with high quality compression and functional design.



Seamless



Compression class 1



4-way stretch



40-60°C washing



## Smart products

NordiCare's line of seamless knitted compression garments are designed to be worn directly after surgery and during the recovery period. To facilitate wear, we have incorporated a lot of smart design such as double closures, silicone waist line and open crotch. They are discreet under your clothing which helps you feel good while getting better. The line is constantly evolving and will in the near future expand with complementary models. Most models are available in two colours, black and beige.



## Seamless 4-way stretch

The knitted seamless 4-way stretch make the garments comfortable to wear and easy to fit as they adjust to body shape. The breathable and soft material transports moisture and is yet quick drying, durable and supportive. Small parts can be cut for drains or other facilities. The garments easily stay fresh and hygienic since they can be washed at home in high temperatures (40-60°C).

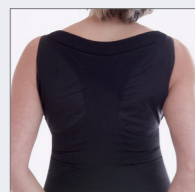


## Targeted compression

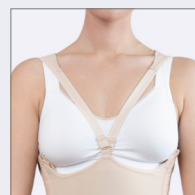
Each garment is designed to provide targeted compression (class 1), meaning necessary compression and support exactly where needed. By controlling compression in the operated area, the healing process advances faster and patient comfort is heightened. For a perfect fit, the knitted zones and seams follow the contours of the body. Each product is specially designed based on indication and will ensure the right level of compression over time.

## Alison

Compression body with high back. Recommended after surgery or liposuction on the abdomen, sides and back. Supportive over the abdomen/pocket and wide back. Sizes XS-2XL. Art.no 51203



Wide back.

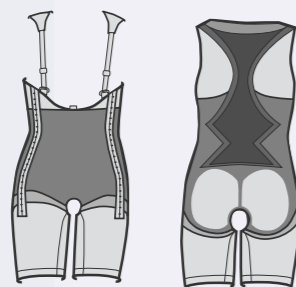


Moveable shoulderstraps.

Adjustable shoulder straps

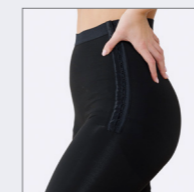
Adjustable hook-and-eye closure in 3 steps both sides

Open crotch

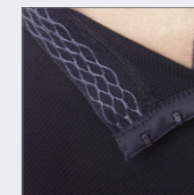


## Courtney

Below knee compression pants. Recommended after surgery and liposuction on the leg or abdomen. Sizes XS-2XL. Art.no 51210.



Easy to apply.

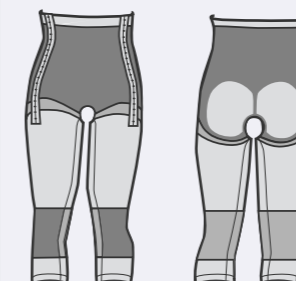


Silicone makes the pants sit in place.

Silicone waistband

Adjustable hook-and-eye closure in 3 steps both sides

Open crotch



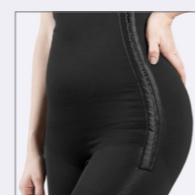
## Cindy

Compression bodysuit with high waist. Recommended after surgery or liposuction on buttocks, hips, abdomen, thighs and back. Knitted shaped compression over buttocks and groins for optimal fit. Reinforced knitting over abdomen for extra support. Sizes XS-2XL. Art.no 51208.

Adjustable shoulder straps

Adjustable hook-and-eye closure in 3 steps both sides

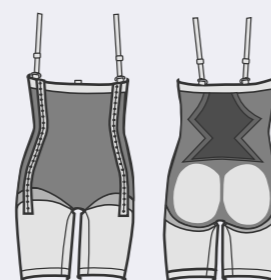
Overlapping opening in the crotch



Shaped knitting.



Moveable shoulderstraps.



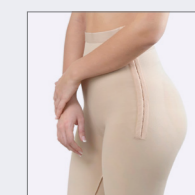
## Patsy

Full length compression pants. Recommended after surgery and liposuction on the leg or abdomen. Sizes XS-2XL. Art.no 51201.

Silicone waistband

Adjustable hook-and-eye closure in 3 steps both sides

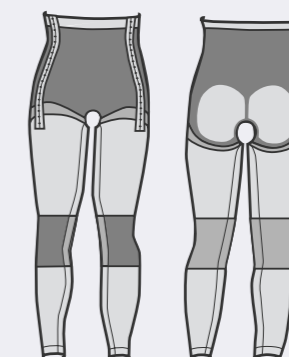
Open crotch

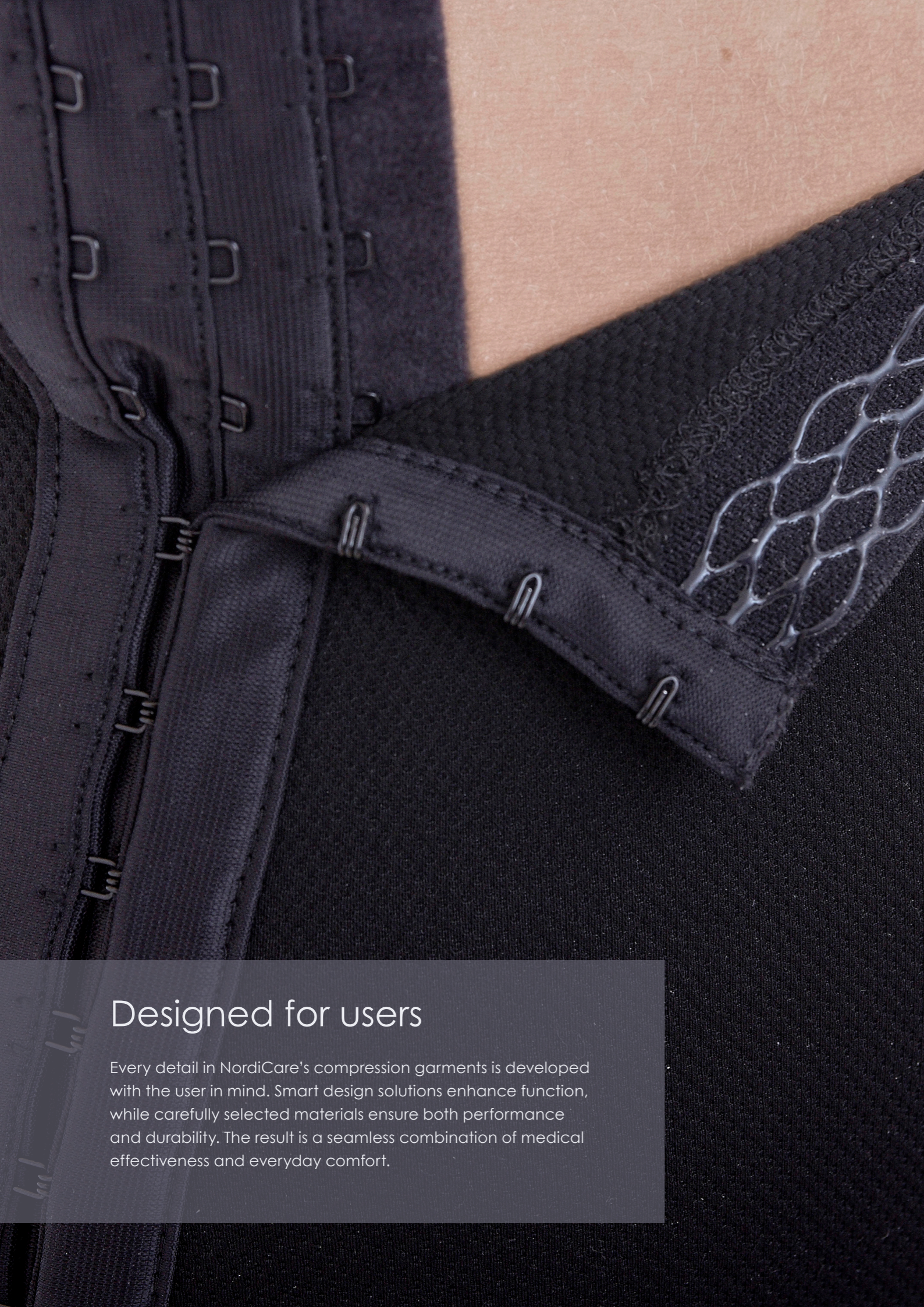


Easy to apply.



Silicone makes the pants sit in place.





## Designed for users

Every detail in NordiCare's compression garments is developed with the user in mind. Smart design solutions enhance function, while carefully selected materials ensure both performance and durability. The result is a seamless combination of medical effectiveness and everyday comfort.

### Annie

Below knee compression pants in pull-on model. Recommended after minor surgery or liposuction on the leg and abdomen. Sizes XS-2XL. Art.no 51202.

**Silicone waistband**

**Can be used as step-2-product**



Easy to apply.



Silicone makes the pants stay in place.

### Daisy

Fully openable compression body with double material over the abdomen. Recommended after surgery and liposuction on the abdomen. Sizes XS-2XL. Art.no 51204.

**Silicone waistband**

**Adjustable hook-and-eye closure in 3 steps both sides**

**Crotch closure, hook-and-eye**



Easy to adjust.



Silicone makes the pants stay in place.



Fully openable



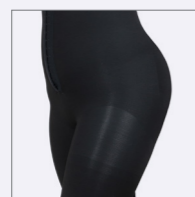
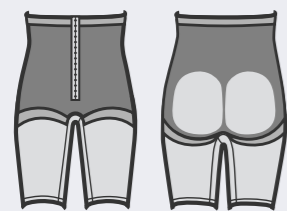
## Peggy

Knee-length compression pants. Recommended after surgery on buttocks, hips or thighs, such as liposuction or BBL. Peggy can also be used as a "Step 2 product" after surgery when compression is recommended for a longer time. Sizes XS-2XL. Art.no 51206.

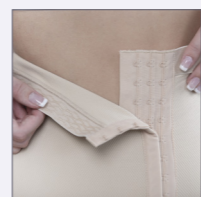
**Silicone waistband**

**Adjustable hook-and-eye closure in 3 steps**

**Overlapping opening in the crotch**



Shaped knitting over buttocks.



Easy to adjust and stay in place.



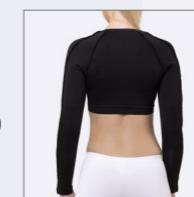
## Jessie

Compression bolero with full-length sleeves. Recommended after surgery or liposuction of the arms, armpits and upper back. Optimal compression and support for pain relief and reduced swelling. Conforms to the body. Sizes XS-2XL. Art.no 51212.

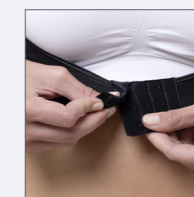
**Gentle side support for an irritation-free comfort**

**Compression to the entire arm, armpit, and upper back**

**Adjustable fit with 3-step hook-and-eye closure**



Shaped knitting over the back and arm crease.



Fully openable and easy to put on and adjust.



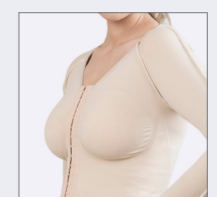
## Jill

Compression top with full-length sleeves. Recommended after arm and back surgery such as liposuction or arm lift. Hook-and-eye closure in the front for easy application and adjustment. Sizes XS-2XL. Art.no 51205.

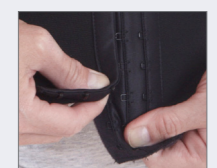
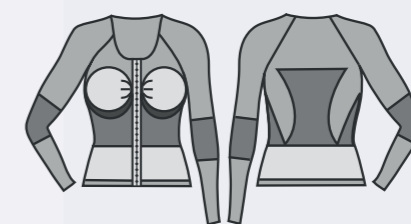
**Adjustable hook-and-eye closure in 3 steps**

**Fits different body shapes and bra sizes**

**Lighter compression over the abdomen**



Flexible bust.



Easy adjustment.



## Dolly

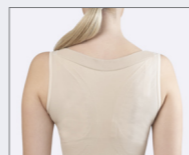
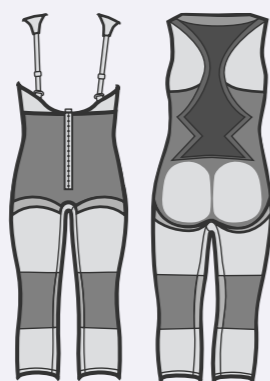
Compression bodysuit with high back. Recommended after surgery on buttocks, hips, abdomen and back, such as liposuction or BBL. Supportive over the abdomen. Sizes XS-2XL. Art.no 51207.



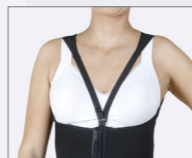
**Adjustable shoulder straps**

**Adjustable hook-and-eye closure in 3 steps**

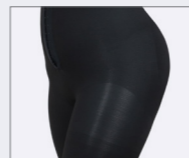
**Overlapping opening in the crotch**



High back and adjustable fit.



Moveable shoulderstraps.



Shaped knitting over buttocks.

## William

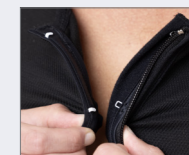
Full-length compression vest for men. Recommended following gynecomastia surgery or liposuction. Adjustable shoulder straps and protected zipper. Hook-and-eye closure under zipper for extra security. Sizes XS-2XL. Art.no 51211.



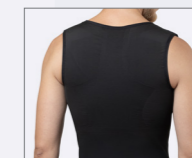
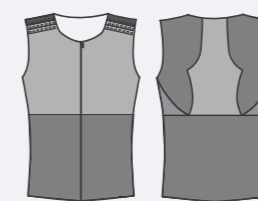
**Adjustable shoulder straps**

**Shaped knitting over the chest and shoulders**

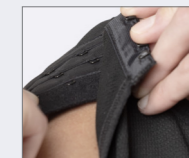
**Lighter compression over the abdomen**



Protected zipper.



High back and adjustable fit.



Shoulder closure in 3 steps.

## Hollie

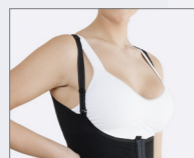
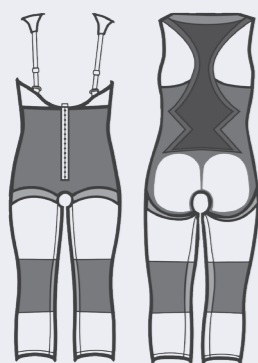
Compression bodysuit with high back. Recommended after surgery on buttocks, hips, abdomen and back, such as liposuction or BBL. Supportive over the abdomen. The same design as Dolly except for the fully open crotch. Sizes XS-2XL. Art.no 51209.



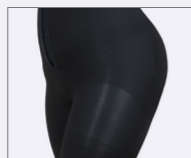
**Adjustable shoulder straps**

**Adjustable hook-and-eye closure in 3 steps**

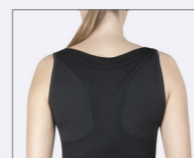
**Open crotch**



Moveable shoulderstraps.



Shaped knitting over buttocks.



High back and adjustable fit.

## How to measure

### A. Waist

Measure around the thinnest part of the waist.

### B. Hip

While feet together, measure circumference of the fullest part of the hip area.

### C. Under bust

Measure the circumference under the bust.

### D. Upper arm (biceps)

Measure around the largest part of the upper arm.

### E. Thigh

Measure the circumference of the fullest part of the thigh.



### Seamless knitted assortment

Size	Waist (A)	Hip (B)	Under bust (C)	Arm (D)	Thigh (E)
X Small	62-68 cm	86-91 cm	63-70 cm	22-25 cm	46-50 cm
Small	69-75 cm	92-97 cm	70-77 cm	25-28 cm	50-54 cm
Medium	76-83 cm	98-103 cm	75-82 cm	28-31 cm	54-58 cm
Large	84-92 cm	104-111 cm	80-87 cm	30-33 cm	58-62 cm
X Large	93-101 cm	112-119 cm	85-92 cm	31-34 cm	62-66 cm
2X Large	102-110 cm	120-127 cm	90-97 cm	33-36 cm	66-70 cm



Smart products and smart design

**NordiCare**<sup>®</sup> +

NORDICARE ORTOPEDI + REHAB AB • Solrosvägen 1 • SE-263 62 Viken, Sverige  
+46 (0)42-35 22 20 • info@nordicare.se • www.nordicare.se