

technoclone

CEVERON[®] alpha

Fully automated coagulation analyzer



A clear view into the future!

COMPACT AND FULLY AUTOMATED

for routine, research and new generation diagnostics!



Clotting



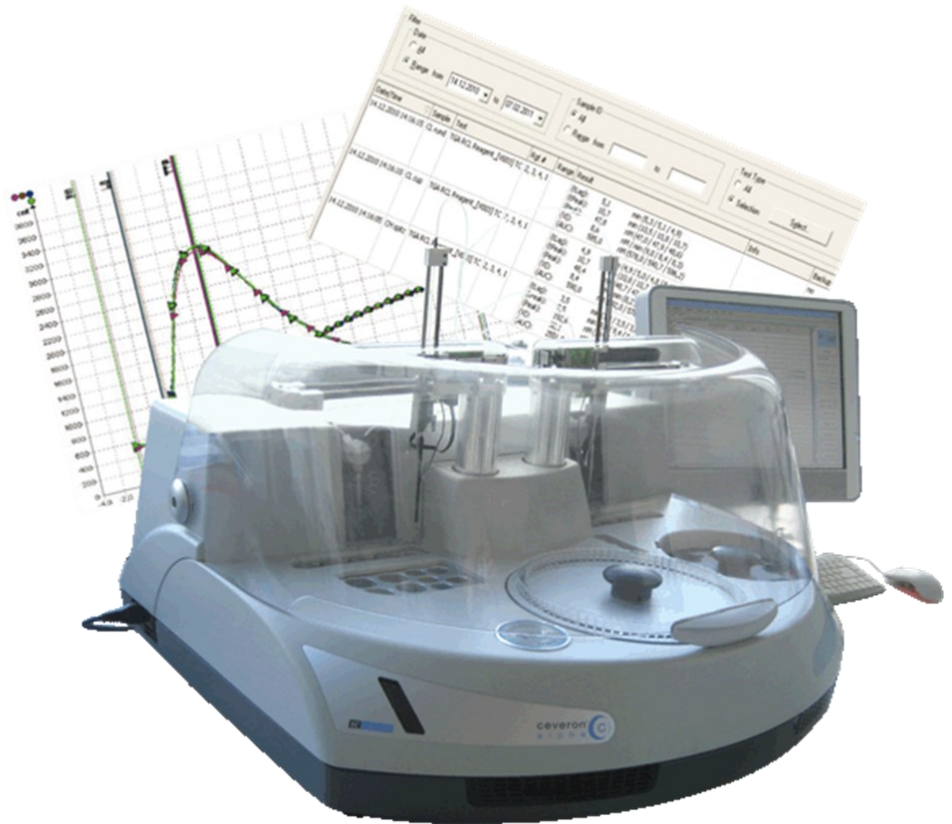
Turbidimetric



Chromogenic



Fluorimetric *



REAGENTS for routine and an extended spectrum of parameters:

CLOTTING TESTS

PT
aPTT
Fibrinogen
Thrombin time
Extrinsic coagulation factors
Intrinsic coagulation factors
Lupus Tests
FVIII Inhibitor
Protein C
Protein S
APCR
Direct Thrombin Inhibitors
Calibrators
Quality controls

CHROMOGENIC TESTS

FVIII:C
C1-Inhibitor
Protein C
Antithrombin
Plasminogen
Anti-plasmin
anti-Xa
UFH, LMWH, Orgaran
Arixtra, Rivaroxaban
Apixaban

TURBIDIMETRIC TESTS

D-Dimer
vWF



FLUORIMETRIC TESTS

Thrombin Generation

* optional

ANALYZER



SAMPLE FEATURES

- Integrated barcode identification for samples
- All tube sizes accepted
- Sample liquid-level sensing
- Automatic dilution and redilution
- Complete traceability of samples

REAGENT FEATURES

- 14 cooled positions
- 4 of them stirred
- 4 positions at RT
- Pre-heated pipetting needle
- Reagent liquid-level sensing
- Barcoded TC reagents
- Complete reagent management (name, batch, stability, expiry date, volume)



UNIQUENESS

- Fluorescence measurement possible
- Compact format
- Extremely quiet
- Automatic self-check
- Transparent shield
- 2 integrated barcode readers



GENERAL FEATURES

- High precision and flexibility
- Fast and easy
- Fully automated Walk-Away-System
- Up to 8 STAT samples
- Almost unlimited amount of programmable applications
- Bi-directional interface to Lab-EDV (LIS)

MEASUREMENT FEATURES

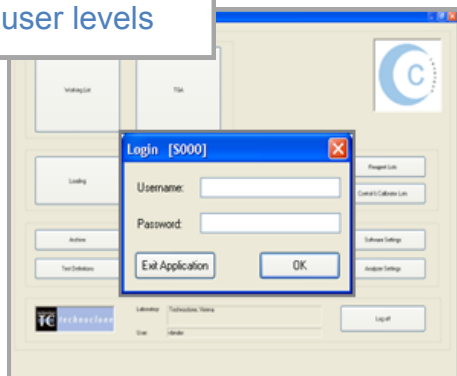
- Simultaneous measurement of clotting, chromogenic and turbidimetric test possible
- 24-hour/ 7 day continuous operation
- Fluorescence measurement possible (optional)
- Rerun anytime possible
- Approximately 100 PT results / hour - depending on test protocol



SOFTWARE

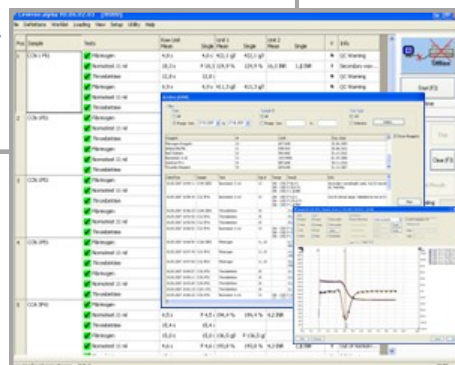
USER MANAGEMENT

User identification and tracking
Secure access through
programmable user levels



USER FRIENDLY

User friendly Windows®
based Software
Detailed in-
formation for
each pati-
ent, test, pe-



WEB BASED UPDATE's

Ceveron alpha user platform

- Update's for TC reagents
- Software updates
- Automatic alert
- Service check

Calibration graphs
with all relevant parameters
Comparison of calibration
curves possible



QUALITY CONTROL

Complete Quality Control
monitoring

- User defined QC limits and Westgard method
- Statistics and graphics

REAGENT HANDLING

Reagent Data Management:

- User defined **test** and **reagent profiles**
- Reagent monitoring of volume and on-board stability



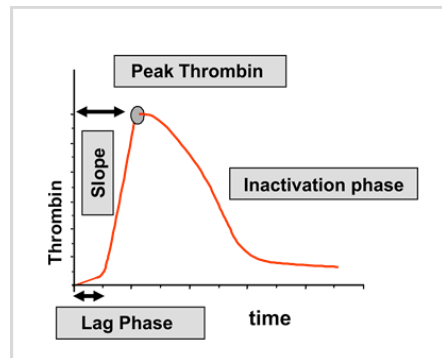
STAT samples can be performed
at any time
Automatic reruns with possibility of
extra sample predilution

TGA MODULE *optional feature

Fluorescence measurement for TECHNOTHROMBIN® TGA

TECHNOTHROMBIN® TGA

TECHNOTHROMBIN® TGA is a **thrombin generation assay (TGA)** based on monitoring the formation of thrombin by means of a fluorogenic substrate upon activation of the coagulation cascade by tissue factor.

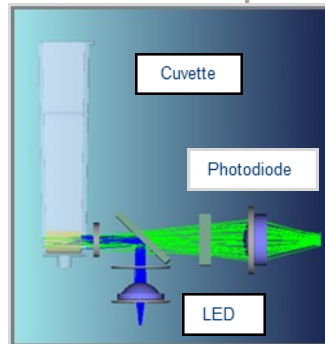


UNIQUENESS

Measurement can be stopped after Peak Thrombin has been reached. Therefore short assay time in routine setting of **<20 min. possible. CVs <5%.**

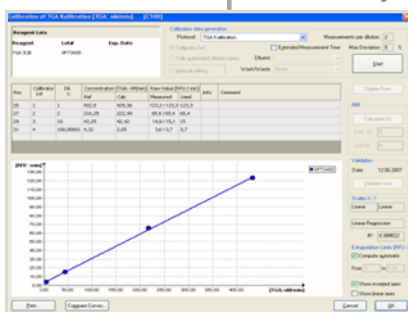
FLUORIMETRIC MODULE

A special adapted TGA module with 4 channels is placed laterally in the tempered cuvette rotor. With an UV emitter (365nm) placed in the module, **thrombin gen-**



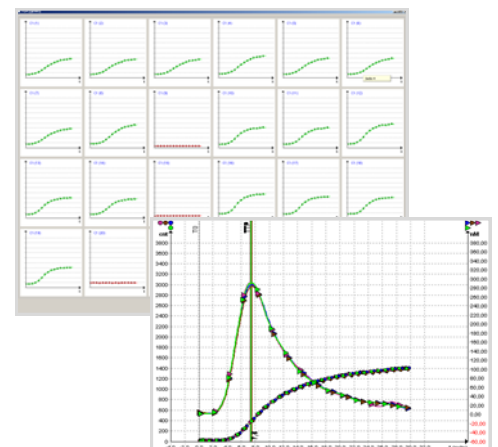
CALIBRATION CURVE

Fully automated calibration curve is created.



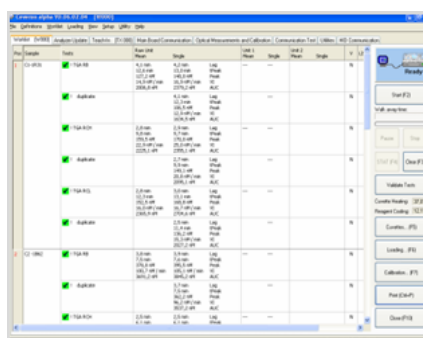
MEASUREMENT MONITORING

TGA monitoring of each sample during measurement possible!















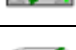


RESULTS

Results are automatically calculated and displayed in Lag Time („Lag“), Time to Peak („tPeak“), Peak Thrombin („Peak“), Velocity Index („VI“) and Area Under the



CEVERON[®] alpha SPECIFICATIONS

Test Menu	Clotting, chromogenic, turbidimetric and fluorogenic assays *
Measuring unit	<ul style="list-style-type: none"> • 4 channels with 4 wavelengths Wavelengths: 405, 540, 630, 740 nm each • 4 channels with fluorogenic wavelength* Emitting wavelength: 365 nm
Samples on board	24 + 12 for Ceveron [®] sample cups
Reagents on board	14 cooled 4 room temperature 8 buffers and diluents
Cuvettes on board	84 (7x12 racks)
Tests per sample	36
Sample volume	5 - 400 µL
Reagent volume	5 - 400 µL
STAT capability	up to 8
Rerun testing	Yes, configurable
Quality control	User defined QC limits, Westgard rules method, multiple statistics
Patient data storage	unlimited
Operating system	Windows [®] XP
Dimensions (analyzer)	750 mm x 675 mm x 420 mm (w x d x h)
Weight	40 kg

Sample barcode reader	
Reagent barcode reader	
Barcoded TC reagents	
Sample level sensor	
Reagent level sensor	
Sample predilution	
Calibration curve predilution	
Reaction curve availability	
Security system	
Continuous operation	
Bi-directional interface	
Host query function	
Events log system	
Automatic repeats	
Automatic re-dilution	

For further information please contact:

CEV001E.009 06/2013

Technoclone GmbH

Brunner Str. 67 | 1230 Vienna | Austria

Tel: +43 1 86 373-0 | Fax: +43 1 86373-44

sales@technoclone.com | www.technoclone.com



technoclone