

NEW

**IF YOU CAN HANDLE
GRADIENT CENTRIFUGATION,
THEN YOU CAN HANDLE
PLURISPIN®, TOO.**

pluriSpin

**Negative Cell Isolation
For Untouched Cells**

| | |
|---|-------------|
| pluriSpin® Human Monocyte Enrichment | 19-01001-31 |
| pluriSpin® Human Monocyte Depletion | 19-01002-31 |
| pluriSpin® Human T Cell Enrichment | 19-02001-31 |
| pluriSpin® Human T Cell Depletion | 19-02002-31 |
| pluriSpin® Human CD4 ⁺ T Cell Enrichment | 19-03001-31 |
| pluriSpin® Human CD4 ⁺ T Cell Depletion | 19-03002-31 |
| pluriSpin® Human CD8 ⁺ T Cell Enrichment | 19-04001-31 |
| pluriSpin® Human CD8 ⁺ Cell Depletion | 19-04002-31 |
| pluriSpin® Human NK Cell Enrichment | 19-05001-31 |
| pluriSpin® Human NK Cell Depletion | 19-05002-31 |
| pluriSpin® Human B Cell Enrichment | 19-06001-31 |
| pluriSpin® Human CD19 ⁺ Cell Depletion | 19-06002-31 |
| pluriSpin® Human Granulocyte Enrichment | 19-07001-31 |

All products available for processing 40 ml or 200 ml whole blood (2ml or 10ml vials).

pluriSelect USA

Spring Valley, CA 91977
USA

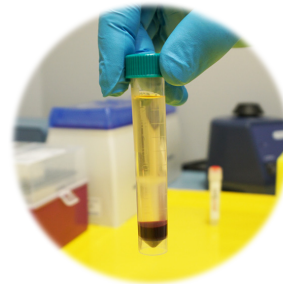
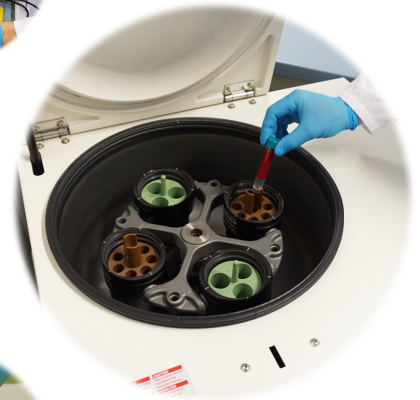
Phone: 619-928-9265
support.usa@pluriselect.com

www.pluriselect.com/plurispin.html

pluriSelect Life Science Worldwide

Deutscher Platz 5c
04103 Leipzig
Germany

Phone: +49 341 333858-0
support@pluriselect.com



 **pluriSelect**

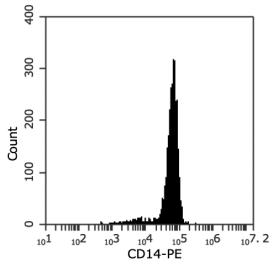
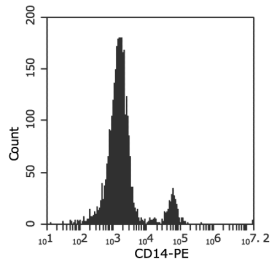
Facts & Features

- ✓ Affordable one step negative cell separation
- ✓ Independent of RBC concentration
- ✓ Based on density centrifugation
- ✓ Untouched cells for maximum viability
- ✓ No columns, no magnets
- ✓ No training or special equipment required
- ✓ Application in whole blood, buffy coat or cord blood
- ✓ Remove platelets with pluriSpin® PLT Depletion to improve results

Results Using pluriSpin® Human Monocyte Enrichment

Start: 18.4% CD14+ cells in PBMC

Enriched: 88.6% CD14+ cells



Starting with fresh peripheral blood, the CD14+ cell content of the enriched fraction is typically 84% - 92%.

Launch Products

| Target Cell Type | Enriched Purity | Depleted Purity |
|------------------|-----------------|-----------------|
| Monocytes | 84% - 92% | 0.2% - 1% |
| T cells | 88% - 95% | 0.2% - 2% |
| CD4+ T cells | 88% - 94% | 0.2% - 1% |
| CD8+ T cells | 84% - 95% | 0.2% - 0.7% |
| NK cells | 75% - 90% | 0.5% - 3% |
| B cells | 75% - 85% | 0.1% - 0.4% |

How It Works

