

How to replace the heating element



Remove the plug
before following the
instruction

How to empty
the water-
heater



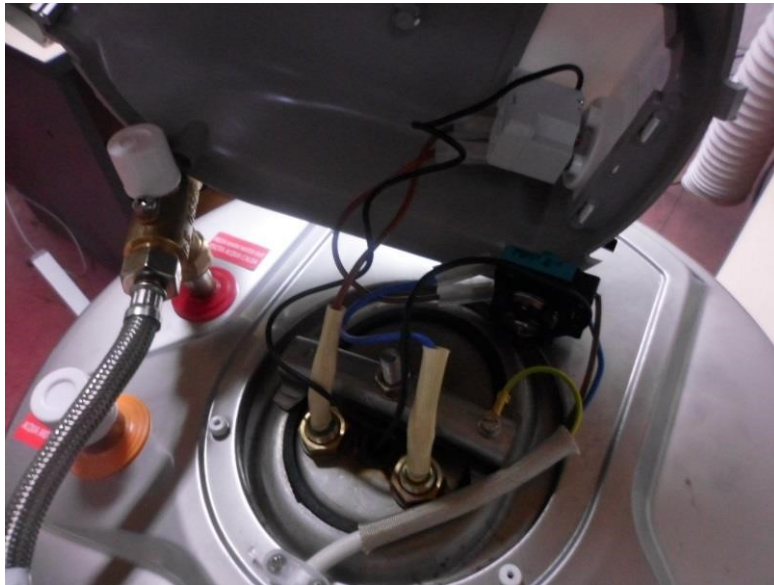


Remove the fixing screws of the cover

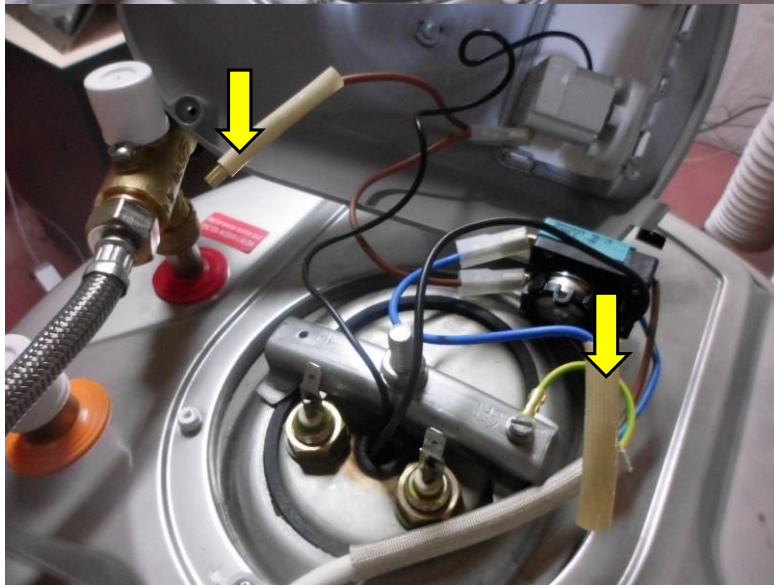


Pull the cover out paying attention to the plastic inserts on the back



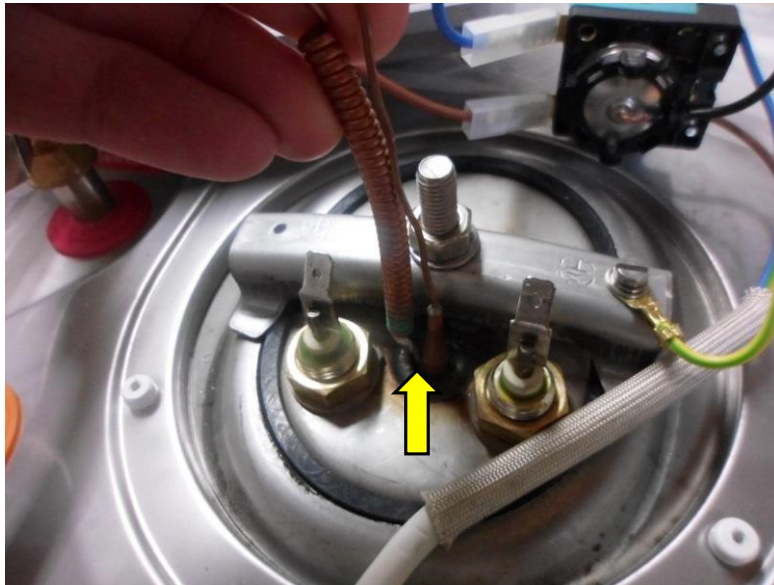


Lift the cover

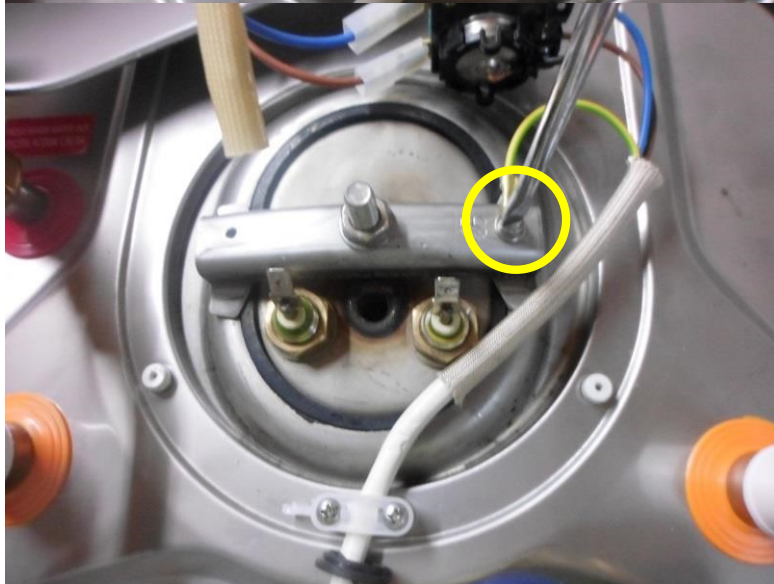


Remove the connections on the heating element



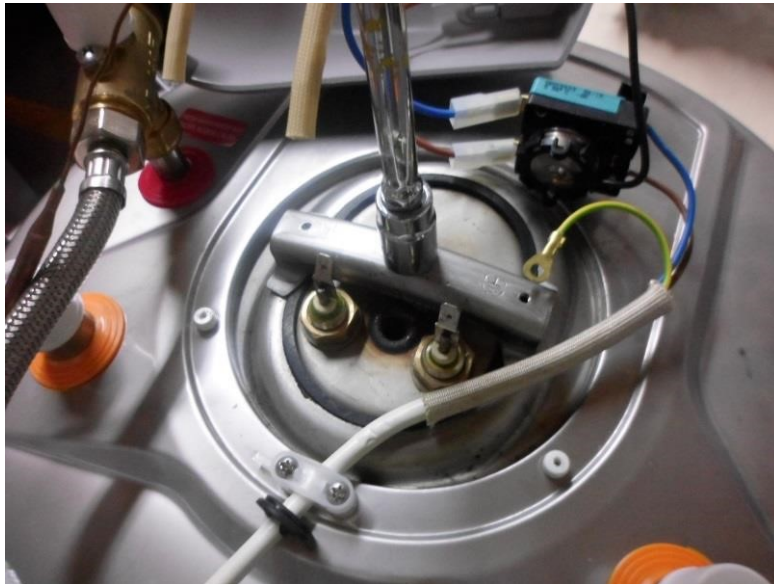


Remove the thermostat probes

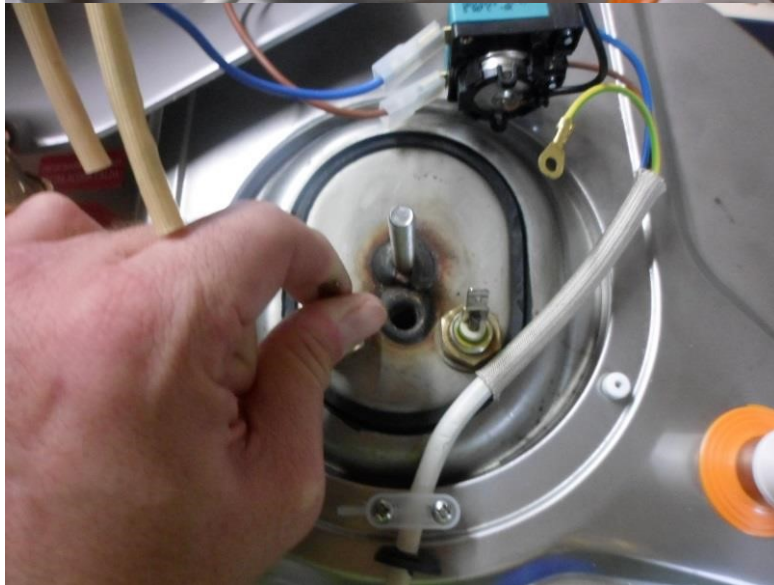


Remove the ground cable





With a wrench pipe #14 remove the nut



Now it's time to remove the bracket

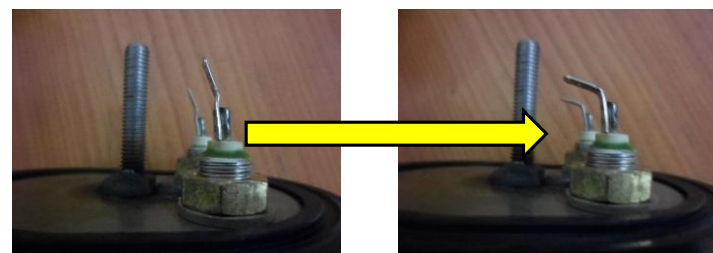




Rotate the bracket by 90° counter-clockwise

Remove the side opposite to the heating element first

Attention: on Slim models bend the connections of the heating element a bit in order to remove the bracket





Remove the nuts holding the heating element

Remove the heating element





Remove the gaskets

Reinsert the gaskets on the new heating element

Attention: there are two kinds of gaskets, 2 rigid gaskets and 2 soft ones. **The soft gaskets must be inserted first** and will remain inside the heater





Insert the heating element on the bracket

Insert then the hard gaskets and the nuts above them

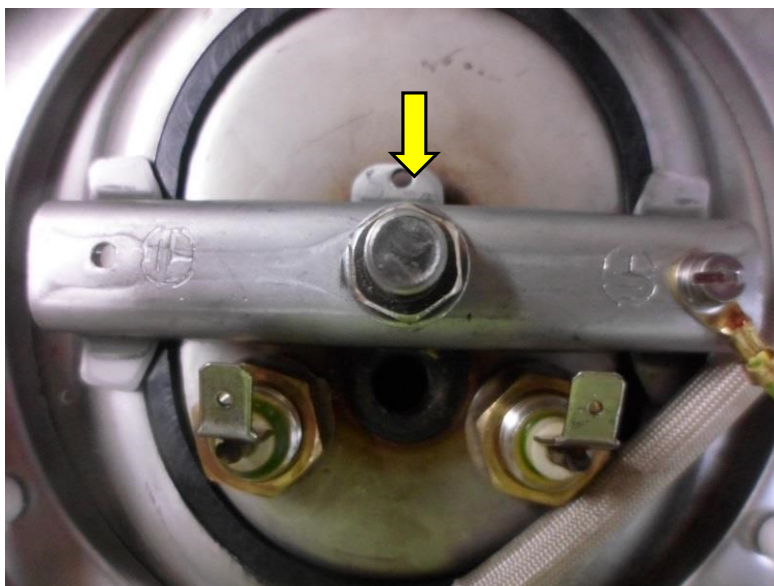




The correct position of the heating element is slightly bent, this to allow the heating element to heat the water in the lowest part of the water-heater

Attention: when reinstalling the brakcet it's very important to have it well placed in the center, make sure the gasket is evenly set





When reinstalling the bridge pay attention to the positioning, the part indicated by the arrow must be as in the picture or the hole for the thermostat probes will be covered. Reconnect the ground cable and the power supply connections. When tightening the nut never use more than a 8-10N force

Attention: when inserting the thermostat probes it's important to insert them in the correct order: cylindrical first and coil after

