

How to replace the handle





The Elegance handle kit is the same for all models, 49, 65, 85 and 130

Spare part number: **SGD00043AA**

Dimensioni:

Peso:

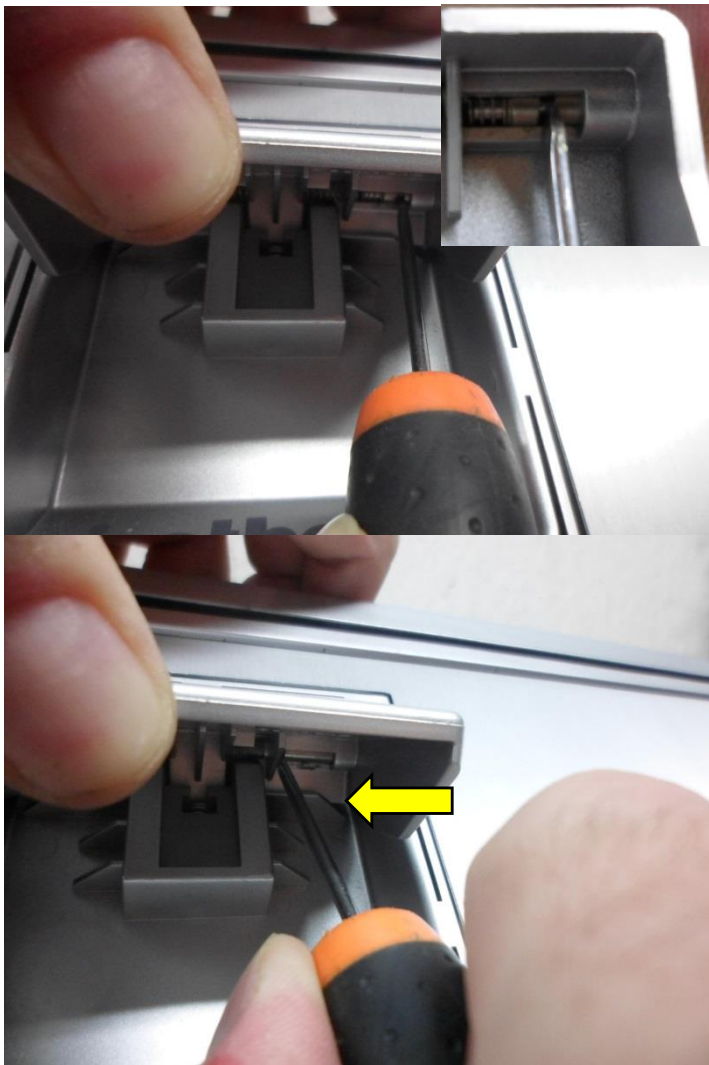




With the fingers remove the frame of the handle. If necessary use the blade of a knife, paying attention not to damage the surface of the aluminum panel

Remove the frame entirely





Insert the screwdriver into the hinge slot

Apply a bit of strength to move the hinge inward. Repeat the operation on the other hinge



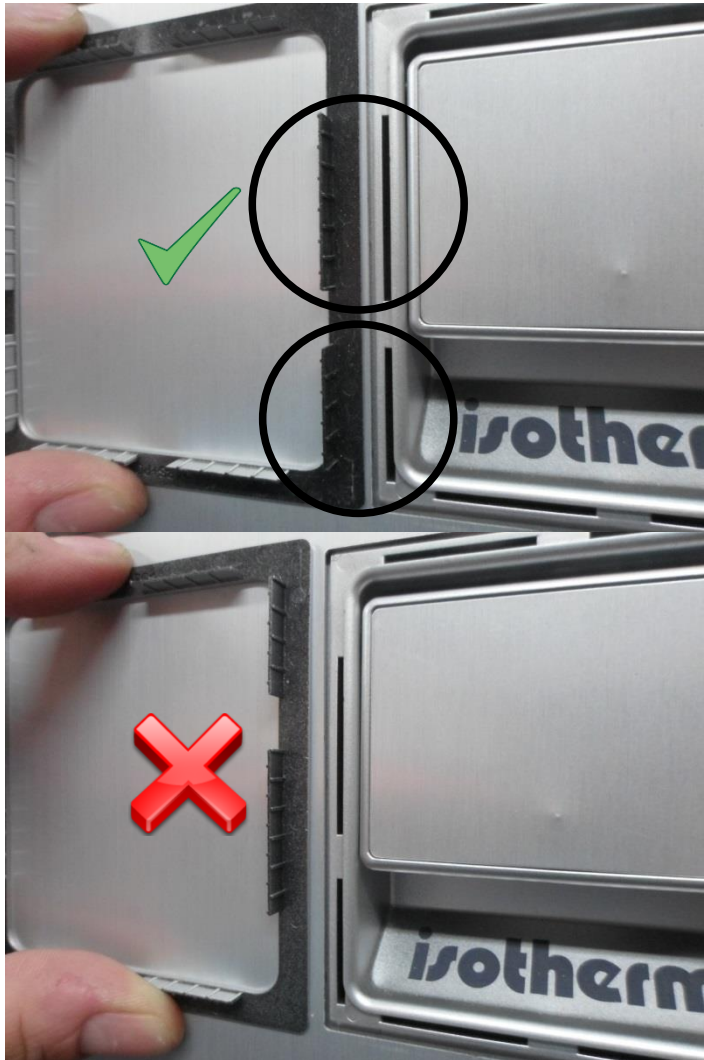


Pull the handle out, paying attention to the hinges, the spring can propel the hinge out.

It's now possible to replace the handle with the new one

To re-insert the handle push both hinges into the handle and insert it in its see. If necessary use the screwdriver to push the hinges in their sockets





When mounting the frame pay attention to the hinges

The frame fits only in one way

