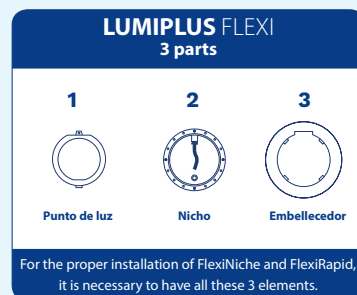
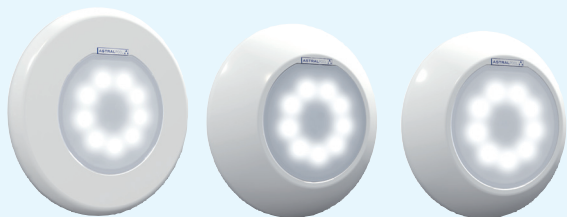


LUMIPLUS FLEXI PROJECTOR



New



1

Nominal voltage choice: 12VAC / 24VDC (includes power supply 220VAC-24VDC)

Protection: IPX8

Cable included (2,5m. 2x1 mm²).

The RGB spotlight is compatible with Modulator 27818.

RGB DMX spotlight is compatible with DMX Modulator 41107.

Must always be installed submerged in water.

SPOTLIGHT FLEXI

| Range | Light colour | Code | | P. Consumption | Luminous Flux |
|---|--------------|-------|---------------------------|----------------|---------------|
| V1 | White | 12VAC | 71200 | 16W (24VA) | 1.485 lm |
| | | 24VDC | 71201 | 14W (14VA) | 1.485 lm |
| | Warm White | 12VAC | 71200WW | 16W (24VA) | 1.485 lm |
| | | 24VDC | 71201WW | 14W (14VA) | 1.485 lm |
| | RGB | 12VAC | 71203 | 22W (29VA) | 1.100 lm |
| | RGB Wireless | 12VAC | 71205 (1 Spotlight Flexi) | | 22W (29VA) |
| 71206 (1 Spotlight Flexi + Control Motion) | | | | | |
| 71207 (2 Spotlights Flexi + Control Motion) | | | | | |
| V2 | White | 24VDC | 71202 | 32W (32VA) | 4.320 lm |
| | Warm White | 24VDC | 71202WW | 32W (32VA) | 4.320 lm |
| | RGB | 12VAC | 71204 | 43W (54VA) | 2.544 lm |
| | RGB DMX | 12VAC | 71208 | 43W (54VA) | 2.544 lm |



Fluidra Connect Compatible if installed with LumiPlus RGB Modulator + Fluidra Connect Compatible Module



Salt water resistant

To correctly illuminate a swimming pool we recommend you:

Install a LumiPlus Flexi V1 every 20 m² of water surface.

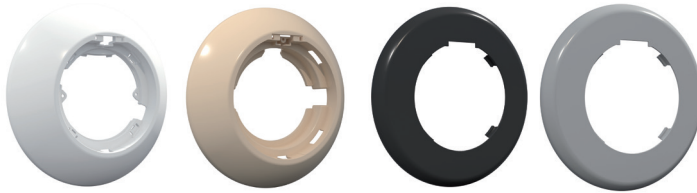
Install a LumiPlus Flexi V2 every 25 m² of water surface.

Note: Recommendation valid for light coloured pools and white light lamps and luminaires.

In case of RGB lighting, dark coloured pools or stainless steel pools we recommend to oversize the proportion between projectors and square meters.

New

2



FlexiSlim

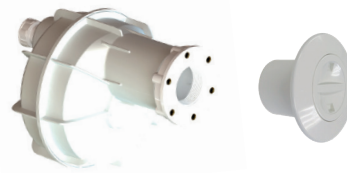
FlexiRapid

FlexiNiche

| FLEXI FACEPLATE | Colour | | | |
|----------------------------------|--------|------------|------------|-----------------|
| | White | Beige | Light grey | Anthracite grey |
| FlexiNiche <i>Niche fixation</i> | 71209 | 71209CL090 | 71209CL129 | 71209CL144 |
| FlexiSlim <i>Wall fixation</i> | 71210 | 71210CL090 | 71210CL129 | 71210CL144 |
| FlexiRapid <i>Inlet fixation</i> | 71211 | 71211CL090 | 71211CL129 | 71211CL144 |

3

Only for FlexiNiche y FlexiRapid assemblies








| FlexiNiche | Concrete pool | PREFABRICATED POOL | | PANELS POOL | | FlexiRapid | | | | |
|------------|---------------|--------------------|-----------------|--------------|-----------------|--|---|--------------------|----------------------------|-----------------|
| | | With inserts | Without inserts | With inserts | Without inserts | CONCRETE POOL | | PREFABRICATED POOL | | |
| | | | | | | Threaded connection 1 1/2" Ø63 PN-6 pipe | Threaded connection 1 1/2" Ø63 PN-10 pipe | Liner Niche | Threaded connection 1" 1/2 | Polyester Inlet |
| Niche Ø230 | 00349 | 00364 | 28887 | 23671 | 23670 | 35418 | 35421 | 59983 | 27084 | 38805 |
| Niche Ø180 | 59813 | 59814 | 59815 | - | - | | | | | |

New

LUMIPLUS FLEXI KITS

(Spotlight (V1) with light + Faceplate with the colour)

| FlexiNiche <i>NICHE FIXATION</i> | FlexiSlim <i>WALL FIXATION</i> | FlexiRapid <i>THREADED FIXATION</i> | Technical characteristics | | |
|---|---|---|---------------------------|--|---------------|
|  |  |  | Rated Voltage | P. Consumption | Luminous flux |
| 71212 | 71214 | 71216 | 12VAC | 16W (24VA)  | 1.485 lm |
| 71213 | 71215 | 71217 | 24VDC | 14W (14VA)  | 1.485 lm |

LUMIPLUS PAR56 LAMP WHITE

LUMIPLUS PAR56 LAMP

PAR56 V1

52596



| | |
|----------------|--------------|
| P. Consumption | 16 W (24 VA) |
| Luminous Flux | 1.485 lm |
| Rated Voltage | 12 V AC |

Protection: IPX8
PAR56 LEDs LAMP can be supplied on the following light colours: Red / Green / Blue / Warm White / Neutral White.

LUMIPLUS PAR56 DC LAMP

DC PAR56 V1

67515



| | |
|----------------|----------|
| P. Consumption | 14 W |
| Luminous Flux | 1.485 lm |
| Rated Voltage | 24 V DC |

Protection: IPX8
Include power supply 220VAC-24VDC. It can not work with 220VAC-12VAC electro-magnetic transformers. PAR56 LEDs LAMP can be supplied on the following light colours: Warm White / Neutral White.

DC PAR56 V2

67516



| | |
|----------------|----------|
| P. Consumption | 32 W |
| Luminous Flux | 4.320 lm |
| Rated Voltage | 24 V DC |

Protection: IPX8
Include power supply 220VAC-24VDC. It can not work with 220VAC-12VAC electro-magnetic transformers. PAR56 LEDs LAMP can be supplied on the following light colours: Warm White / Neutral White.

NEW: All product codes with WW at the end in the LumiPlus range are available in Warm White

LUMIPLUS PAR56 LAMP RGB

LUMIPLUS LAMP V1 RGB

PAR56 V1 RGB

56001



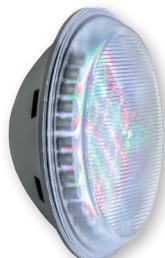
| | |
|----------------|--------------|
| P. Consumption | 27 W (37 VA) |
| Luminous Flux | 1.100 lm |
| Rated Voltage | 12 V AC |

Protection: IPX8

LUMIPLUS LAMP V2 RGB

PAR56 V2 RGB

43411

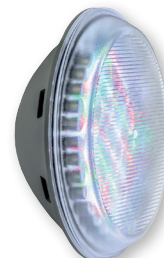


| | |
|----------------|--------------|
| P. Consumption | 48 W (64 VA) |
| Luminous Flux | 2.544 lm |
| Rated Voltage | 12 V AC |

Protection: IPX8

PAR56 V2 DMX

45637



| | |
|----------------|--------------|
| P. Consumption | 48 W (64 VA) |
| Luminous Flux | 2.544 lm |
| Rated Voltage | 12 V AC |

Protection: IPX8

WARNINGS LUMIPLUS LAMP

1.- To correctly illuminate a swimming pool we recommend you:

Install a lamp in the range LumiPlus V1 every 20 m² of water surface. Install a lamp in the range LumiPlus V2 every 25 m² of water surface.

Note: Recommendation valid for light coloured pools and white light lamps and luminaires. In case of RGB lighting, dark coloured pools or stainless steel pools we recommend to oversize the proportion between projectors and square meters.

2.- PAR56 lamp cable not included.

3.- Must always be installed submerged in water.



Fluidra Connect Compatible if installed with LumiPlus RGB Modulator + Fluidra Connect Compatible Module



Salt water resistant



| PAR56 RGB V1 lamp wireless | | 1 lamp + Control Motion | 2 lamps + Control Motion | 1 lamp RGB V1 Wireless |
|-------------------------------------|------------------------|----------------------------|-----------------------------|---------------------------|
| | | 59126 | 59127 | 59124 |
| P. Consumption | 27 W (37 VA) each lamp | | | |
| Luminous Flux | 1.100 lm each lamp | | | |

Rated Voltage: 12 V AC
Protection: IPX8
 Cable not included.
 Must always be installed submerged in water.
 LumiPlus Control Motion is not waterproof.

LUMIPLUS DESIGN PROJECTORS

To correctly light a swimming pool we recommend you: Install a lamp in the range LumiPlus Design V1 every 25 m² of water surface.

Note: Recommendation valid for light coloured pools and white light lamps and luminaires. In case of RGB lighting, dark coloured pools or stainless steel pools we recommend to oversize the proportion between projectors and square meters.



| DESIGN | Faceplate | Code | Power consumption | Luminous flux |
|--------------|-------------|-------|-------------------|---------------|
| Light colour | | | | |
| RGB | Pure White | 59803 | 40 W (55 VA) | 2.544 lm |
| | Inox Effect | 59801 | | |
| White | Pure White | 59807 | 45 W (50 VA) | 4.320 lm |
| | Inox Effect | 59805 | | |
| RGB DMX | Pure White | 59811 | 40 W (55 VA) | 2.544 lm |
| | Inox Effect | 59809 | | |

Rated Voltage: 12V AC.
Protection: IPX8.
Cable: 2,5m. H07RN-F 2x1,5 mm²
 Must always be installed submerged in water.
 To complete the projector select the right niche for each swimming pool type (page 7).

NEW: All product codes with WW at the end in the LumiPlus range are available in Warm White

LUMIPLUS MINI V3 PROJECTORS

To correctly light a swimming pool we recommend you: Install a lamp in the range LumiPlus Mini V3 every 5 m² of water surface.

Note: Recommendation valid for light coloured pools and white light lamps and luminaires. In case of RGB lighting, dark coloured pools or stainless steel pools we recommend to oversize the proportion between projectors and square meters.



| Mini V3 | | Swimming pool | | | | |
|---------|-------------|---------------|-------|-------|-------------------|---------------|
| | | Concrete | Liner | SPAs | Power Consumption | Luminous flux |
| RGB | Pure White | 59971 | 69633 | 59973 | 4 W (7 VA) | 186 lm |
| | Inox Effect | 59972 | 69634 | 59974 | | |
| RGB DMX | Pure White | 59975 | 69635 | 59977 | 4 W (4 VA) | 186 lm |
| | Inox Effect | 59976 | 69636 | 59978 | | |
| White | Pure White | 59979 | 69637 | 59981 | 4 W (6 VA) | 315 lm |
| | Inox Effect | 59980 | 69638 | 59982 | | |

Rated Voltage: 12V AC (RGB y White)

Protection: IPX8

Cable: 2,5m. H07RN-F 2x1 mm²

It is possible to be installed inside or outside the water. RGB projector can be installed with the Modulator of code 27818, it can control up to 900VA. RGB-DMX projectors must be coupled to a DMX Power supply of code 52142 (maximum 9 projectors).

NEW: All product codes with WW at the end in the LumiPlus range are available in Warm White


LUMIPLUS MINI V2 PROJECTORS

To correctly light a swimming pool we recommend you:

Install a lamp in the range LumiPlus Mini V2 every 5 m² of water surface.

Note: Recommendation valid for light coloured pools and white light lamps and luminaires. In case of RGB lighting, dark coloured pools or stainless steel pools we recommend to oversize the proportion between projectors and square meters.



| Quick coupling Mini | Faceplate | | Power Consumption | Luminous Flux |
|---|-----------|-----------------|-------------------|---------------|
| | ABS | Stainless Steel | | |
| Light colour | | | | |
| RGB  | 52124 | 52125 | 4 W (7 VA) | 186 lm |
| White | 52130 | 52131 | 4 W (6 VA) | 315 lm |
| RGB DMX | 52136 | 52137 | 4 W (4 VA) | 186 lm |


Rated Voltage: 12 V AC (RGB and White)

Protection: IPX8

Cable: 2,5m. H07RN-F 2x1,5 mm²

It is possible to be installed inside or outside the water. RGB projector can be installed with the Modulator of code 27818, it can control up to 900VA. RGB-DMX projectors must be coupled to a DMX Power supply of code 52142 (maximum 9 projectors).



| Mini for SPAs and prefabricated pools | Faceplate | | Power Consumption | Luminous Flux |
|---|-----------|-----------------|-------------------|---------------|
| | ABS | Stainless Steel | | |
| Light colour | | | | |
| RGB  | 52126 | 52127 | 4 W (7 VA) | 186 lm |
| White | 52132 | 52133 | 4W (6 VA) | 315 lm |
| RGB DMX | 52138 | 52139 | 4 W (4 VA) | 186 lm |


Rated Voltage: 12 V AC (RGB and White)

Protection: IPX8

Cable: 2,5m. H07RN-F 2x1,5 mm²

It is possible to be installed inside or outside the water. RGB projector can be installed with the Modulator of code 27818, it can control up to 900VA. RGB-DMX projectors must be coupled to a DMX Power supply of code 52142 (maximum 9 projectors).



| Mini light guts | Faceplate | | Power Consumption | Luminous Flux |
|---|-----------|-----------------|-------------------|---------------|
| | ABS | Stainless Steel | | |
| Light colour | | | | |
| RGB  | 52128 | 52129 | 4 W (7 VA) | 186 lm |
| White | 52134 | 52135 | 4 W (6 VA) | 315 lm |
| RGB DMX | 52140 | 52141 | 4 W (4VA) | 186 lm |

Rated Voltage: 12 V AC (RGB and White)

Protection: IPX8

Cable: 2,5m. H07RN-F 2x1,5 mm²

It is possible to be installed inside or outside the water. RGB projector can be installed with the Modulator of code 27818, it can control up to 900VA. RGB-DMX projectors must be coupled to a DMX Power supply of code 52142 (maximum 9 projectors).

NEW: All product codes with WW at the end in the LumiPlus range are available in Warm White

LUMIPLUS MICRO V2 PROJECTORS

To correctly light a swimming pool we recommend you:

Install a lamp in the range LumiPlus MICRO every 5 m² of water surface.

Note: Recommendation valid for light coloured pools and white light lamps and luminaires. In case of RGB lighting, dark coloured pools or stainless steel pools we recommend to oversize the proportion between projectors and square meters.



| Quick coupling Micro | Faceplate | | Power Consumption | Luminous Flux |
|----------------------|--------------|-----------------|-------------------|---------------|
| | ABS | Stainless Steel | | |
| Light colour | | | | |
| RGB | 64552 | 64553 | 4 W (7 VA) | 186 lm |
| White | 38814 | 38816 | 6W (9 VA) | 315 lm |
| RGB DMX | 64557 | 64558 | 4 W (4 VA) | 186 lm |

Rated Voltage: 12 V AC (RGB and White)
Protection: IPX8
Cable: 2,5m. H07RN-F 2x1,5 mm²
 It is possible to be installed inside or outside the water. RGB projector can be installed with the Modulator of code 27818, it can control up to 900VA. RGB-DMX projectors must be coupled to a DMX Power supply of code 52142 (maximum 9 projectors).



| Micro for SPAs and prefabricated pools | Faceplate | | Power Consumption | Luminous Flux |
|--|--------------|-----------------|-------------------|---------------|
| | ABS | Stainless Steel | | |
| Light colour | | | | |
| RGB | 64554 | 64555 | 4 W (7 VA) | 186 lm |
| White | 40765 | 40766 | 6W (9 VA) | 315 lm |
| RGB DMX | 64559 | 64560 | 4 W (4 VA) | 186 lm |

Rated Voltage: 12 V AC (RGB and White)
Protection: IPX8
Cable: 2,5m. H07RN-F 2x1,5 mm²
 It is possible to be installed inside or outside the water. RGB projector can be installed with the Modulator of code 27818, it can control up to 900VA. RGB-DMX projectors must be coupled to a DMX Power supply of code 52142 (maximum 9 projectors).

NEW: All product codes with WW at the end in the LumiPlus range are available in Warm White

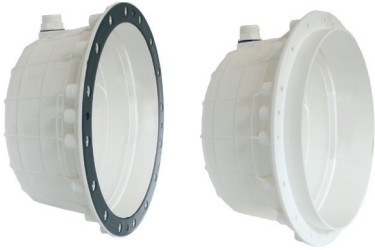
BRICK SERIES




| Brick Light Series | Light colour | | | |
|--------------------|--------------|--------------|--------------|--------------|
| | RGB | | White | |
| | Square | Round | Square | Round |
| | 45716 | 45717 | 57089 | 57090 |
| P. Consumption | 4 W (6 VA) | | 4 W (6 VA) | |

Rated Voltage: 12 V AC (RGB and White)
Protection: IPX8
Cable: 2,5m. H07RN-F 2x1,5 mm²
 The projector has a galvanized steel niche for an easy installation.

NICHOS



Niches for LumiPlus PAR56

| Concrete Swimming Pool | Piscina prefabricada | | Panelled Swimming Pool | |
|--|----------------------|-----------------|------------------------|-----------------|
| | With inserts | Without inserts | With inserts | Without inserts |
| 00349  | 00364 | 28887 | 23671 | 23670 |




Niches for LumiPlus DESIGN

| Concrete Swimming Pool | Prefabricated Swimming Pool | | KIT for fixing other niches |
|--|-----------------------------|---------------------|-----------------------------|
| | With injets | Self-tapping screws | |
| 59813  | 59814 | 59815 | 59818 * |

* Compatible with most 180 to 190 mm Ø niches on the market (Hugo Lahme, MTS Products, Wibre, etc.). Ask your dealer for further details.



Niches for LumiPlus Mini V2

| Concrete Swimming Pool | | Prefabricated Swimming Pool | Panelled Swimming Pool |
|------------------------|--|-----------------------------|------------------------|
| Light gut | Quick coupling | | |
| 06967 | 53956  | 00369 | 49828 |

Niches for LumiPlus Mini V3 and LumiPlus RAPID V1

| Concrete Swimming Pool | | | | Liner Swimming Pool | | |
|--------------------------|---|--|-------|-------------------------------|----------------|-----------|
| Ø63 PN-6/ PN-10 pipes | Threaded connection 1 1/2" Ø63 PN-6 pipe | Threaded connection 1 1/2" Ø63 PN-10 pipe | Niche | Liner | | Polyester |
| | | | | Threaded connection 1" 1/2 | Niche | Inlet |
| 62395 | 35418 | 35421 | 53956 | 27084 | 59983 60229 | 38805 |

ACCESORIES

RGB CONTROL SYSTEMS



27818
Modulator with antenna
LumiPlus RGB



41988
LumiPlus RGB
Remote Control

LUMIPLUS TOP

EXISTING INSTALLATION



59131
LumiPlus WiFi
Access Point

NEW INSTALLATION



59132 / 59133 (USA 115 Vac)
LumiPlus WiFi Access
Point Modulator



WIFI LUMIPLUS LED APP

EXISTING INSTALLATION



57434
Fluidra Connect
Compatible Module

NEW INSTALLATION



57435
LumiPlus RGB Modulator + Fluidra
Connect Compatible Module

FLUIDRA CONNECT



32458
LumiPlus RGB Pushbutton

LUMIPLUS ECO



59125
LumiPlus Control Motion Wireless



64633
LumiPlus Wireless Range Extender

WIRELESS

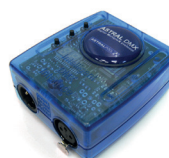
RGB DMX CONTROL SYSTEMS



41107
Modulator for RGB-DMX
large projectors



52142
Power Supply for RGB-DMX
Mini and Quadraled



41329
Astral DMX controller



41330
Astral DMX PRO controller