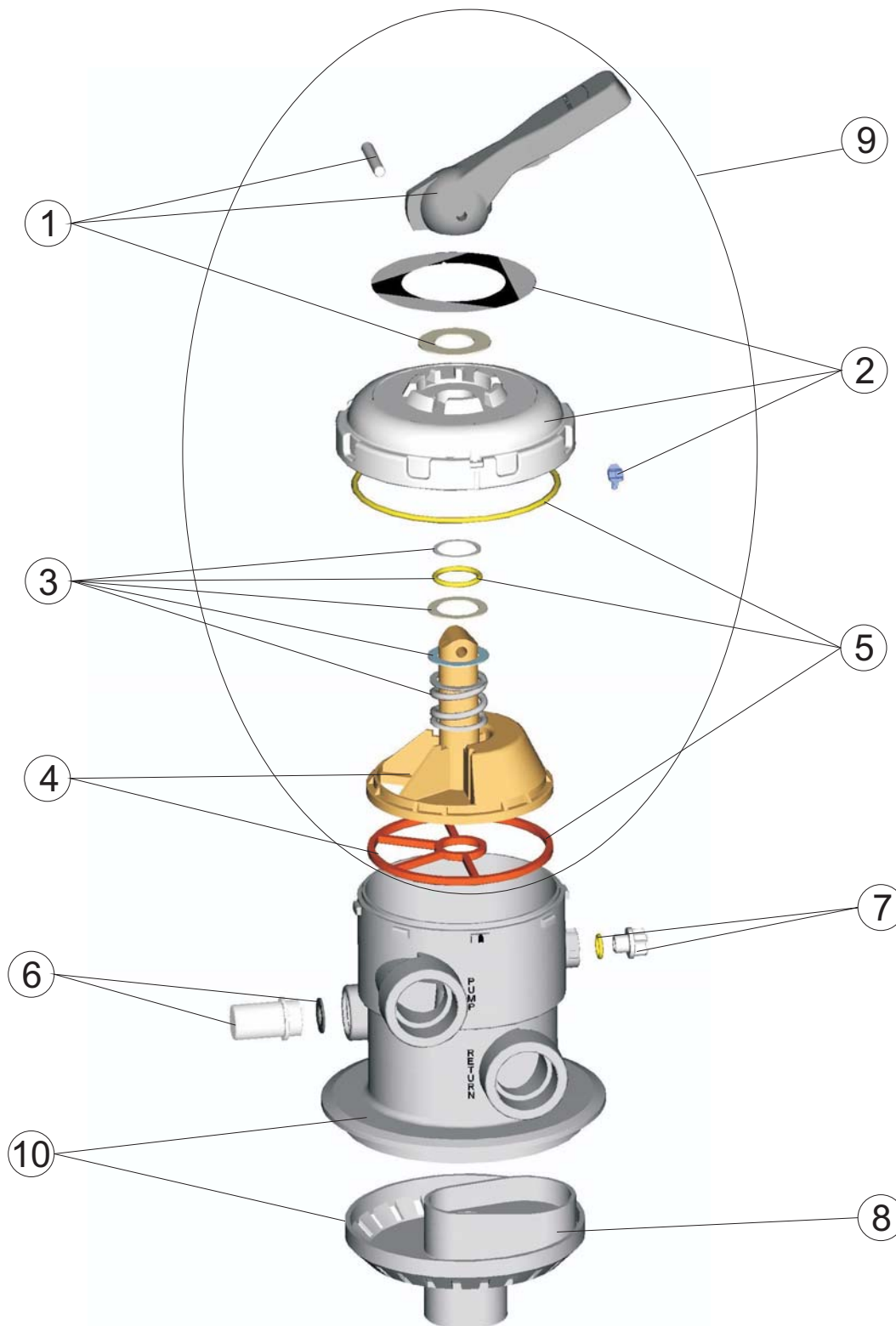


CODIGO : 20565
DESCRIPCION : VALVULA SELECTORA 1 1/2" TOP



	CODIGO	DENOMINACION	Pos.	CODIGO	DENOMINACION
1	4404120102	MANETA NEGRA 1 1/2"-2"	6	4404120108	VISOR CON JUNTA
2	4404121102	TAPA ABS 6 V	7	4404121107	TAPON 1/4" VALVULA
3	4404121103	RESORTE VALVULA	8	4404121408	DIFUSOR VALVULA TOP
4	4404121104	DISTRIBUIDOR CON JUNTA	9	4404121110	CJTO. SUPERIOR 1 1/2" BAYONETA NEGRO
5	4404121105	JUNTAS VALVULA 1 1/2"	10	20565R0100	CUERPO VALVULA 1 1/2" BAYO TOP NEGRO

ENGLISH

POS.	CODE	DESCRIPTION	POS.	CODE	DESCRIPTION
1	4404120102	BLACK HANDLE 1 1/2"-2"	6	4404120108	VISOR WITH SEAL
2	4404121102	TOP ABS 6 WAY	7	4404121107	PLUG 1/4"
3	4404121103	SPRING	8	4404121408	DIFFUSER
4	4404121104	DISTRIBUTOR WITH GASKETS	9	4404121110	UPPER PART 1 1/2" BAYONET CLOSING BLACK
5	4404121105	GASKETS 1 1/2"	10	20565R0100	VALVE BODY 1 1/2"

FRANÇAIS

POS.	CODE	DESCRIPTION	POS.	CODE	DESCRIPTION
1	4404120102	POIGNEE NOIRE 1 1/2" ET 2"	6	4404120108	VOYANT ET JOINT
2	4404121102	COUVERCLE ABS 6 VOIES	7	4404121107	BOUCHON 1/4" DE VANNE
3	4404121103	RESSORT DE VANNE	8	4404121408	DIFFUSEUR DE VANNE TOP
4	4404121104	BOISSEAU AVEC JOINT	9	4404121110	ENSEMBLE SUPERIEUR 1 1/2" BAYONETTE NOIR
5	4404121105	JOINTS VANNE 1 1/2"	10	20565R0100	CORP DE VANNE DE SELECTION 1 1/2"

ITALIANO

POS.	CODE	DESCRIPTION	POS.	CODE	DESCRIPTION
1	4404120102	MANIGLIA NERA 1 1/2" - 2"	6	4404120108	VISORE CON GUARNIZIONE
2	4404121102	COPERCHIO ABS 6 V	7	4404121107	COPERCHIO 1/4" VALVOLA
3	4404121103	MOLLA VALVOLA	8	4404121408	DIFFUSORE VALVOLA TOP
4	4404121104	DISTRIBUTORE CON GUARNIZIONE	9	4404121110	KIT BAIONETTA SUPERIORE DA 1 1/2" COLORE NERO
5	4404121105	GUARNIZIONI VALVOLA 1 1/2"	10	20565R0100	CORPO VALVOLA SELETRICE 1 1/2" NERA A BAIONETTA

DEUTSCH

POS.	CODE	DESCRIPTION	POS.	CODE	DESCRIPTION
1	4404120102	HEBEL KOMPLETT RSV SCHWARZ 1 1/2 - 2"	6	4404120108	SICHTGLAS MIT DICHTUNG
2	4404121102	DECKEL RSV 6+1	7	4404121107	ENTLEERUNGSSTOPFENSATZ 1/4" RSV 6+1
3	4404121103	FEDER MIT SCHEIBEN RSV 6+1	8	4404121408	LEITRAD TOP VENTIL
4	4404121104	DREHTELLERSATZ RSV 6+1	9	4404121110	OBERTEIL 1 1/2" BAJONTTVERSCHLUSS SCHWARZ
5	4404121105	DICHTUNGSSATZ RSV 6+1	10	20565R0100	KÖRPER MEHRWEGVENTIL 1 1/2"

PORTUGUÊS

POS.	CODE	DESCRIPTION	POS.	CODE	DESCRIPTION
1	4404120102	MANIPULO PRETO 1 1/2"-2"	6	4404120108	VISOR COM JUNTA
2	4404121102	MANIPULO	7	4404121107	TAMPÃO 1/4" VÁLVULA
3	4404121103	TAMPA PARAFUSOS	8	4404121408	DIFUSOR VALVULA TOP
4	4404121104	DISTRIBUIDORCOM JUNTA	9	4404121110	CJTO. SUPERIOR 1 1/2" BAIONRTA PRETA
5	4404121105	JUNTAS VÁLVULA 1 1/2"	10	20565R0100	CORPO VALVULA SELECTORA 1 1/2" BAIONETA TOPONEGRA