

SAFETY KNIFE SECUNORM PROFI25 MDP

ORDER NOW!

Order No.	120700.02
Knife size (L x W x H)	143 x 17 x 31 mm
Weight knife	84.5 g
Basic material	Aluminium



HIGH
SAFETY

21 mm cutting depth
for all common cutting
materials

Automatic blade retraction
for a high user protection

Metal detectable plastic
for optimal detection

Robust ergonomic handle
for the toughest challenges



Smooth-running slider
for right and left handers

**2-cutting edge
stainless steel blade**
for a double period of use

**Abrasion resistant, uncoated
aluminium**
to protect against contamination
through paint slivers (flakes)

ENJOY SAFETY
MADE IN SOLINGEN

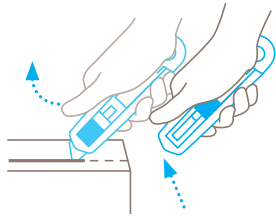
martor

MARTOR SAFETY KNIFE SECUNORM PROFI25 MDP

SAFETY TECHNOLOGY



SECUNORM
= high safety



Automatic blade retraction

The automatic blade retraction of the SECUNORM PROFI25 MDP guarantees a high degree of safety from cut injuries. As soon as you have started to cut, take your thumb off the slider. Then the blade will retract into the handle immediately after leaving the material being cut.

TECHNICAL FEATURES



Metal detectable



Tool-less blade change



Very abrasion resistant



Very ergonomic



2-cutting edge blade



Cutting depth



For right and left handers



Stainless

EXAMPLES OF USE



MAIN CUTTING MATERIALS



Cardboard: up to 3-ply



Wrapping, stretch and shrink foil



Plastic strapping band



Tape



Bagged goods



Layers of foil or paper

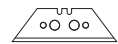


Yarn, cord



PVC

MOUNTABLE BLADES



TRAPEZOID BLADE NO. 199

0.63 mm, deep-edged, stainless,
10 in dispenser

NO. 199.70

PACKING INFORMATION

Packaging unit	1 in single unit box (10 knives in multipack)
Size single unit box	144 x 22 x 38 mm
Weight single unit box	99.3 g
EAN Code single unit box	4002632920431
Size outer pack	115 x 80 x 160 mm
Weight outer pack	1037.2 g
EAN Code outer pack	4002632971754