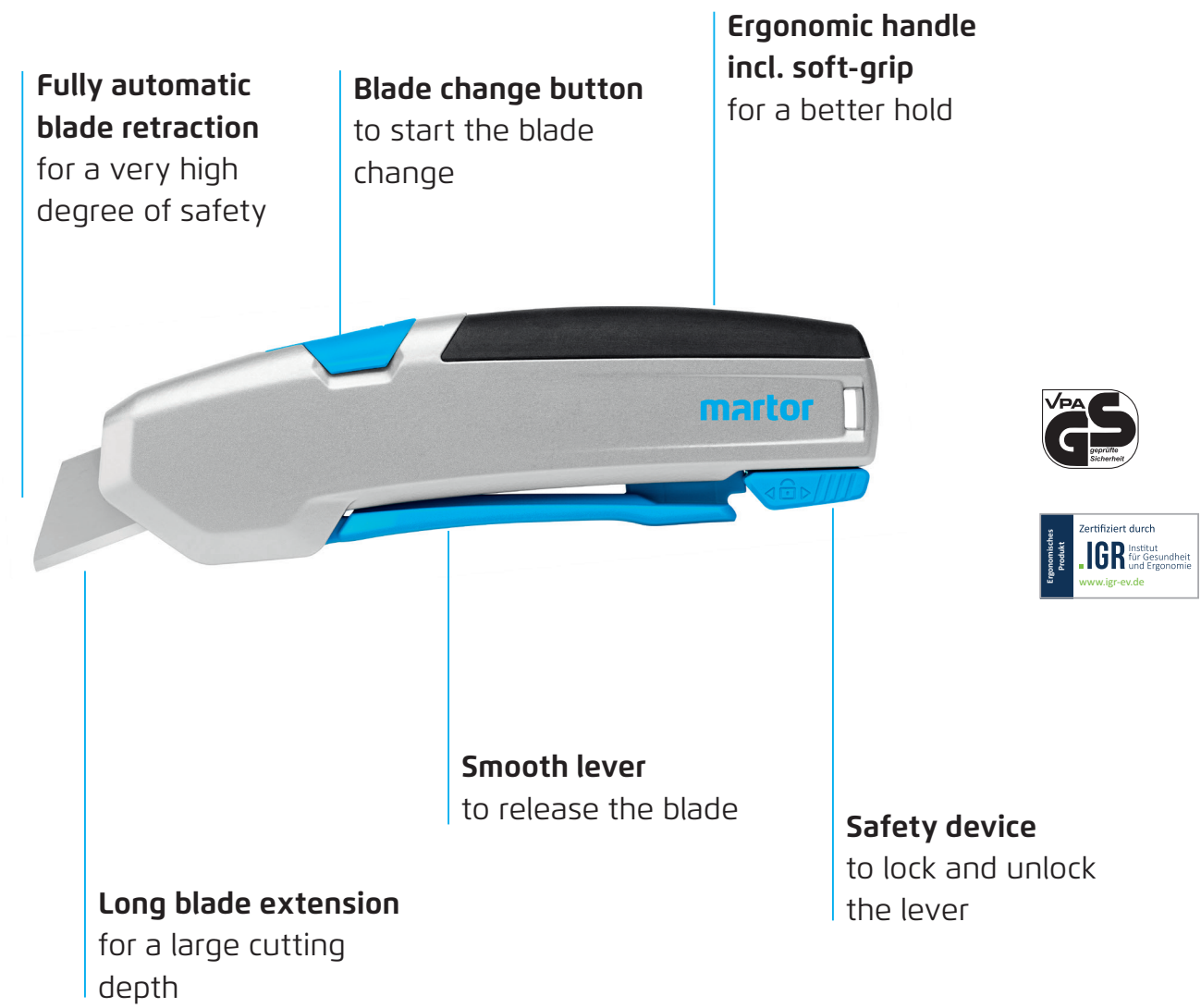


SAFETY POSTER

INSTRUCTIONS FOR THE SAFE HANDLING OF YOUR CUTTING TOOL

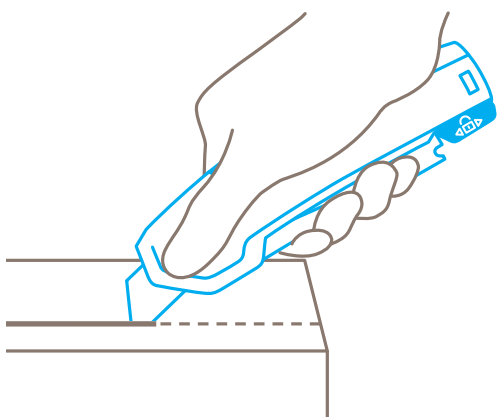


SECUPRO 625

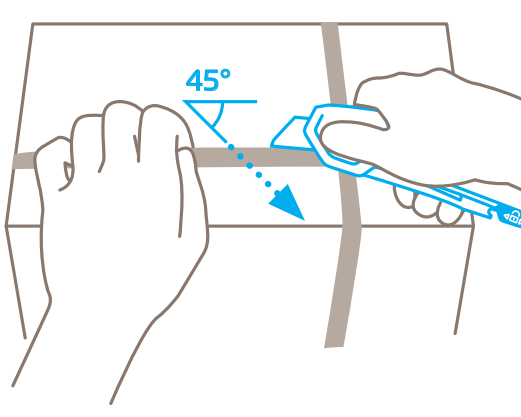


Please note: To ensure your product always functions flawlessly, regularly remove any impurities. For additional safety, we recommend wearing gloves.

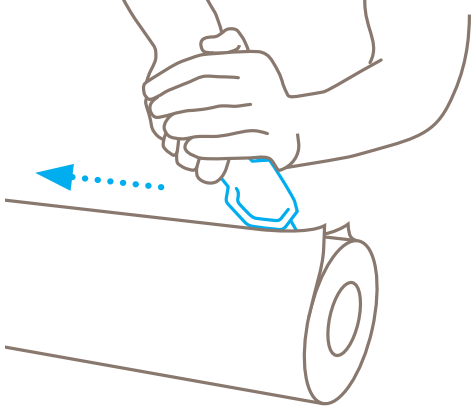
USAGE



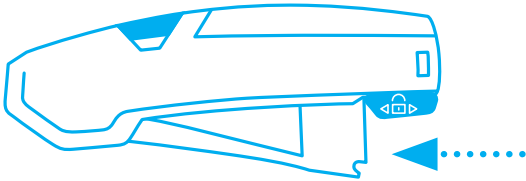
Unlock the lever by **pulling** the safety device. Squeeze the lever to extend the blade. Now you can cut.



For best results, cut plastic strapping band **diagonally** (at a 45° angle).

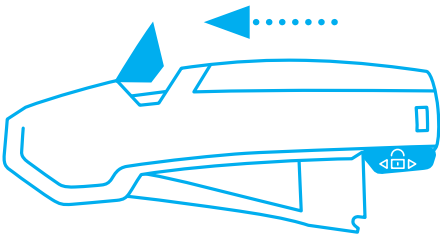


For **power cutting**, push the lever and cut while pulling. Use second hand for reinforcement.

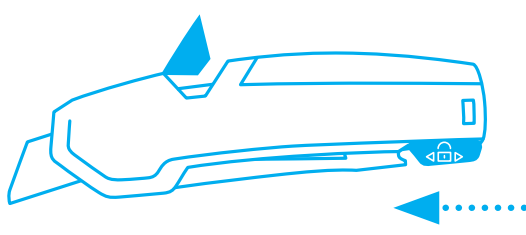


To secure the lever after cutting, push the safety device in the **forward position**. Thus the blade stays securely in the handle.

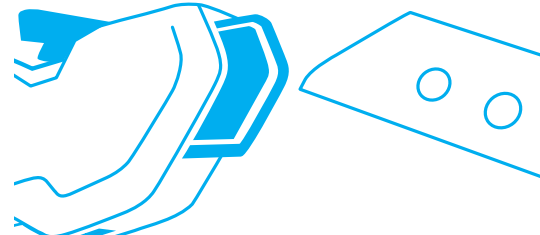
BLADE CHANGE



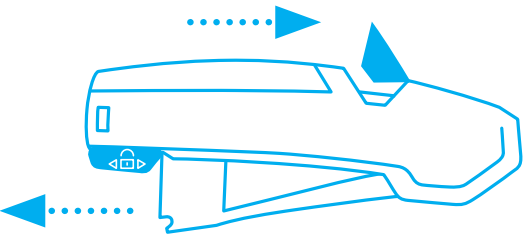
Pull the **blade change button** to the top and release the lever. Blade and blade holder will come out of the handle.



Secure the lever with the safety device and turn the handle so that the **transparent blade cover is facing upwards**.

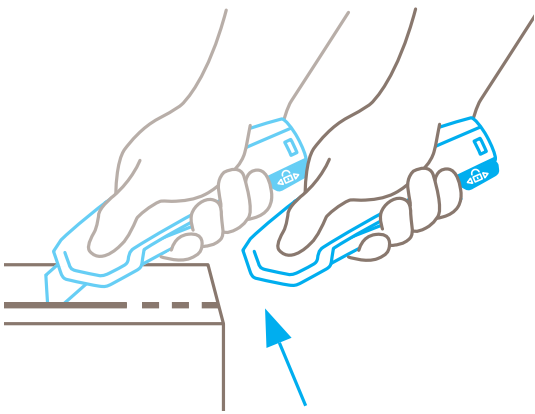


Now **reverse or change** the blade. Make sure that the blade is exactly positioned on the cams on the blade holder.



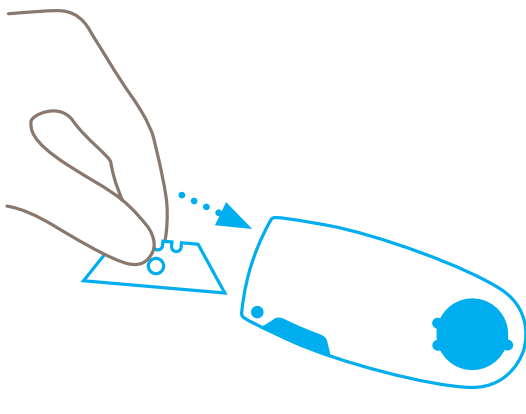
Slide the lock to the rear position, so that the **lever can be released** again. **Then** push the blade change button back into the handle and continue cutting.

PROTECTION OF USER

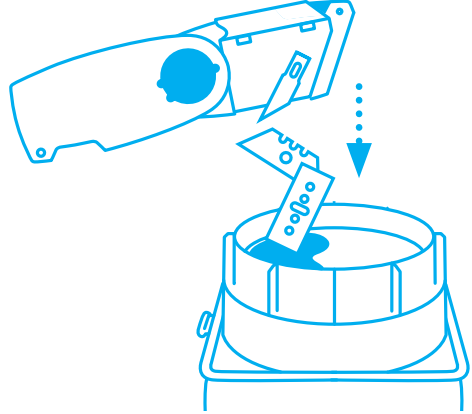


The blade immediately retracts into the handle the moment cutting ceases. Even when the lever is **still being squeezed**.

DISPOSAL



Your **SAFEBOX** is the best place to store **used blades**.



When the **SAFEBOX** is full, **empty all contents** into your **USED BLADE CONTAINER**.