

genexis 



P6426

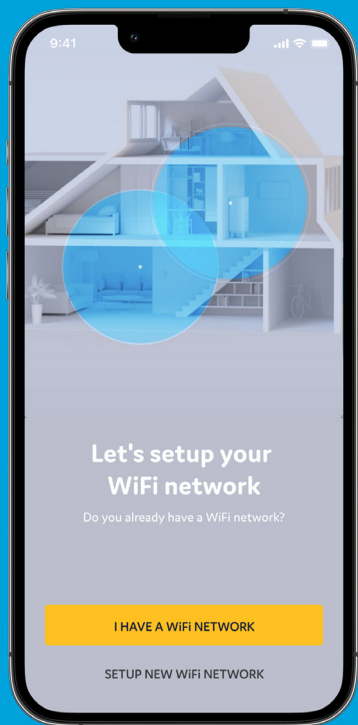
G6426

FiberTwist Series
Installation Guide

Wi-Fi EasyMesh™ supported

Installation with use of app

You're just a few steps away to install your device via the Genexis EasyWiFi app



1

Scan QR-code



2

Download app and follow the steps



Installation guide

FiberTwist P6426/G6426 is installed on an FTU/Bracket

Various translations of this document (if available) and additional product information can be found on <https://genexis.eu/product/fibertwist/downloads>

Box contents

Check if the following items are in the giftbox:

- Genexis FiberTwist P6426/G6426
- Power adapter
- Labels (self-adhesive)

Label position

The product label is positioned on the bottom of the active device. The relevant device information is also listed on the additional labels included in the giftbox.

Preparation

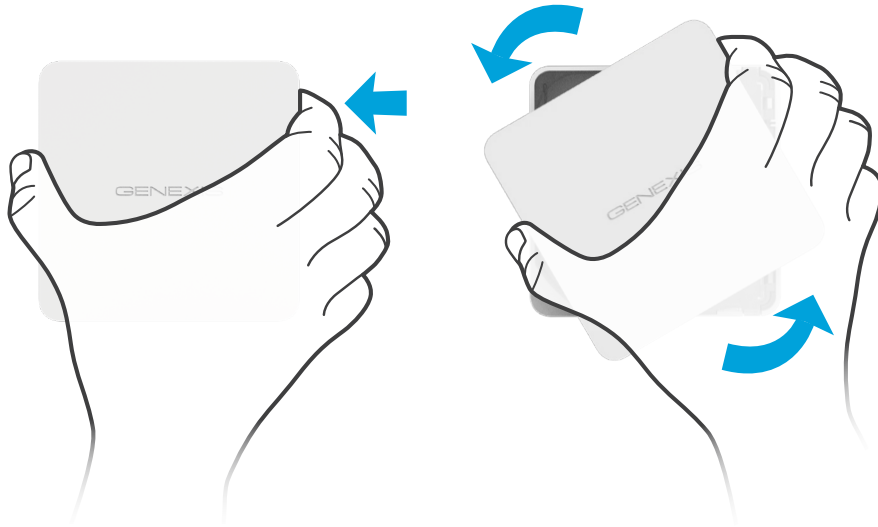
Ensure there is a power socket within reach of where the device is being installed.

Important: Instructions need to be followed precisely and uninterrupted. This minimizes the risk of damage (a severe degradation of signal quality) to the fiber optic connectors.

Warning: Do not cover the device with anything, this will interfere with the ventilation of the FiberTwist. Operation Temperature 0°C ~ 40°C

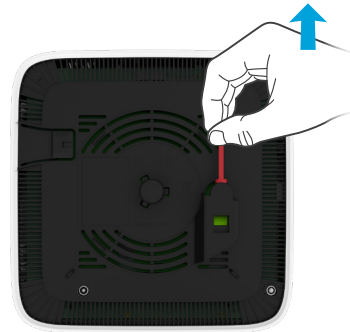
Remove Blind Cover or active device (if present)

1. Press and hold the unlock button (on the right side of the Blind Cover or active device).
2. Rotate the Blind Cover or active device counterclockwise till it blocks.
3. Remove the Blind Cover or active device from the baseplate (FTU) by pulling it towards yourself.
4. Store the Blind Cover or active device in a safe place.



Remove dust cap

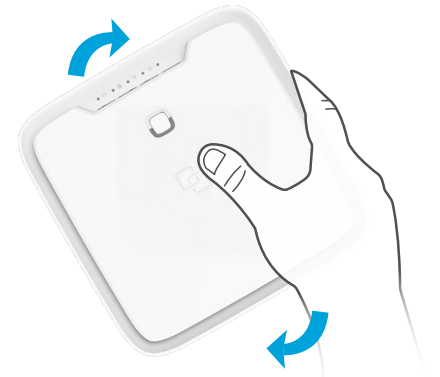
1. Take the FiberTwist P6426/G6426 out of the box.
2. The dust cap is connected to the red string located on the rear of the FiberTwist P6426/G6426.
3. Remove the dust cap by pulling the red string.
4. Store the dust cap in a safe place.



Twist!

1. Place the FiberTwist P6426/G6426 on the FTU/Bracket as shown in the picture below.
2. Rotate clockwise until it clicks into place.
3. Make sure the FiberTwist P6426/G6426 is aligned squarely on the FTU/Bracket.

Your FiberTwist P6426/G6426 is now installed!



Setting up the FiberTwist P6426/G6426

1. If required, connect your telephone to a telephone port via an RJ11 phone cable.
2. If required, connect your personal devices to the LAN ports via an RJ45 network cable.
3. If required, connect your television / set-top box to the TV port with a coax cable.
4. Connect the supplied power adapter to the FiberTwist P6426/G6426 and plug the adapter into a power socket.
5. Toggle the ON/OFF button on the bottom of the FiberTwist P6426/G6426 in the ON position to turn on the device.
6. If the device is connected properly and the service is active on the fiber port, the Status, Uplink and Internet LEDs will have a solid green color.

Switching the WiFi ON/OFF

The WiFi function of the FiberTwist P6426/G6426 can be switched ON or OFF by means of the Mode button.

- Switch OFF: On the FiberTwist P6426/G6426, press and hold the Mode button until the WiFi LED turns off.
- Switch ON: On the FiberTwist P6426/G6426, press and hold the Mode button until the WiFi LED turns on.

Connecting to the wireless network

You can connect your personal device to the FiberTwist P6426/G6426 via manual pairing. If Automated pairing (WPS) is preferred, please check for your specific device how this can be initiated. Before pairing, make sure the WiFi LED is on (solid green). If not, switch the WiFi ON as described in this installation guide.

Manual pairing

The WiFi network name and WiFi key are printed on the labels of the FiberTwist P6426/G6426.

1. Perform a search of available wireless networks on your personal device or scan the QR-code on the label of the FiberTwist P6426/G6426.
2. Select the WiFi network name printed on the labels of the FiberTwist P6426/G6426.
3. Enter the WiFi key printed on the labels of the FiberTwist P6426/G6426.

Using the web interface

You can access the FiberTwist P6426/G6426 web interface via a wired connection or wireless connection.

- Wired connection: Connect an RJ45 network cable between your personal device and the FiberTwist P6426/G6426 LAN port (yellow connector).
- Wireless connection: Connect your personal device to the wireless network as described in this installation guide.

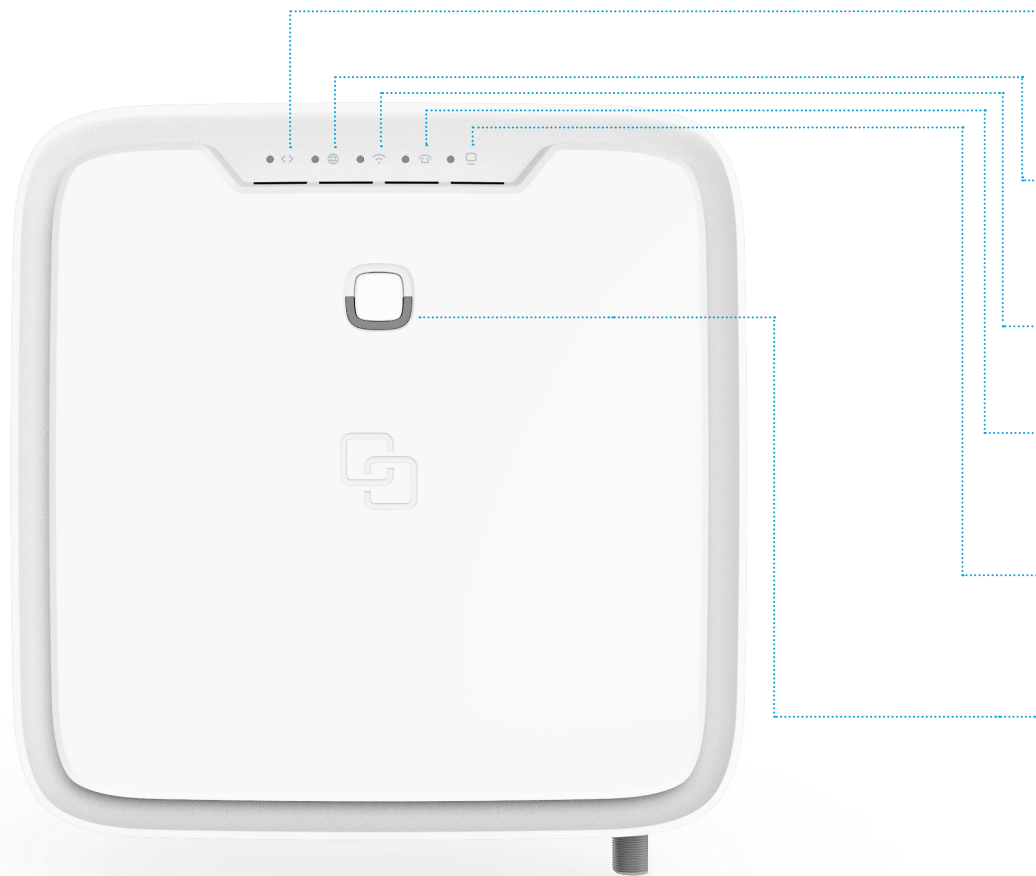
1. Use a web browser on your personal device and navigate to the GUI URL as printed on the labels of the FiberTwist P6426/G6426.
2. Login using the credentials as printed on the labels of the FiberTwist P6426/G6426.

Power saving options

Power saving options are available via the web interface.

The FiberTwist P6426/G6426 is a Class 1 laser product.

LED overview



Uplink

- Green – optical WAN link is established
- Green (blinking) – optical WAN link is in progress
- Red (blinking) – insufficient optical input signal
- Off – no optical WAN link detected

Internet (IP connectivity)

- Green – connected (DNS available)
- Green (blinking) – connection failed (no DNS available)
- Off – no IP connectivity

Wireless (WiFi)

- Green – wireless network 2.4 GHz and/or 5 GHz active
- Off – wireless networks inactive

Phone

- Green – telephony service registered and operational
- Green (blinking) – telephony service in progress to register
- Off – telephony service is disabled

TV

- Green – TV service registered and ok
- Red (blinking) – insufficient optical input signal
- Off – no TV service present or registered

Status

- Green – system is operational ready
- Yellow – system boot initialization
- Yellow (blinking) – system is not ready yet
- Blue – WPS pairing successful
- Blue (blinking) – WPS pairing in progress
- Red – system / booting failure
- Off – power off

Button overview



Mode button

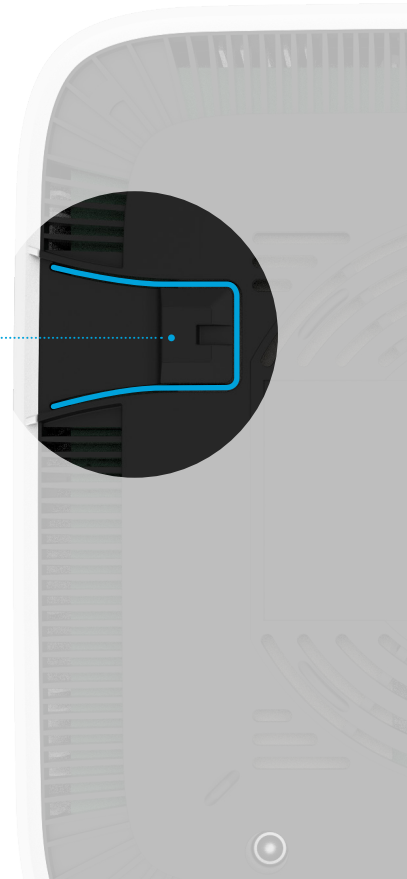
Pairing (WPS) – press and release once

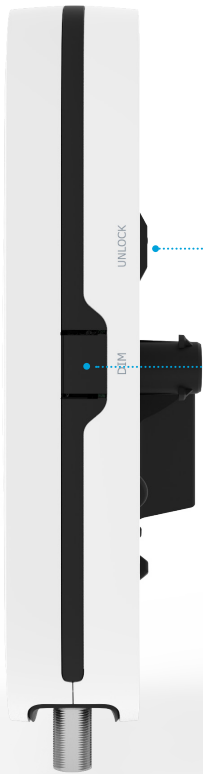
WiFi ON – press and hold until WiFi LED turns solid green

WiFi OFF – press and hold until WiFi LED turns off

Unlock button

Remove FiberTwist P6426/G6426 – press and hold while twisting counterclockwise



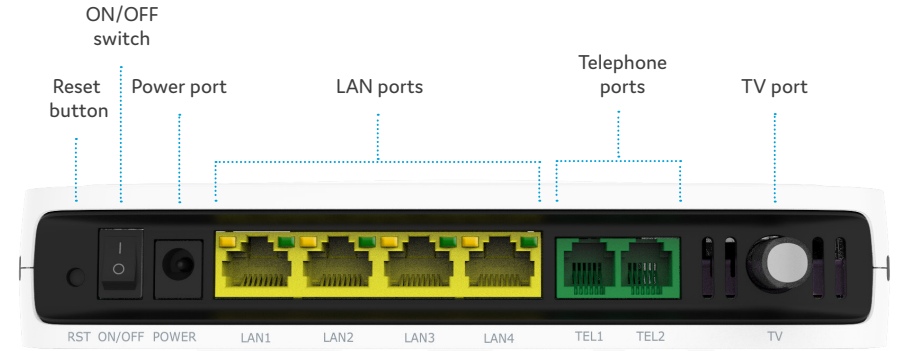


Unlock button

LED dim button

Dim LEDs – press and release repeatedly to dim LEDs

Port overview



Reset button (recessed)

Reboot – short press once

Factory reset – long press and hold until all LED's start fast blinking green

ON/OFF switch

Switch ON – flip the switch to ON

Switch OFF – flip the switch to OFF

Troubleshooting

Is the Status LED solid red?

Contact your service provider.

Is the Status LED not solid blue after automated pairing (WPS)?

Automated pairing between the FiberTwist P6426/G6426 and personal device failed.

Please follow the instructions again to connect your personal devices to the FiberTwist P6426/G6426 via the wireless network.

Is the Status LED blinking yellow and the Uplink LED is blinking green?

The FiberTwist P6426/G6426 is being upgraded with new software. Please wait until the Status LED turns solid green again.

Is the Uplink LED off?

If the Uplink indicator LED is off, despite proper connection, contact your service provider.

Is the Uplink LED blinking red?

Contact your service provider.

Is the Internet LED blinking green for 5 minutes?

FiberTwist P6426/G6426 does not have a connection with the broadband network. Please contact your service provider.

Is the WiFi LED off?

On the FiberTwist P6426/G6426, press and hold the Mode button until the WiFi LED starts blinking green or turns solid green.

Return the FiberTwist P6426/G6426 to factory default settings

With the reset button you can reset the FiberTwist P6426/G6426 to its factory default settings. You can press this button with a small pin or paperclip.

1. Press and hold the reset button until all LED's start fast blinking green.
2. Wait until the Status LED turns solid green again.

EU Declaration of Conformity

Hereby, Genexis Netherlands B.V. declares that the radio equipment type FiberTwist P6426/G6426 is in compliance with Directive 2014/53/EU, Directive 2009/125/EC, Directive 2011/65/EU and Delegated Directive 2015/863.

The full text of the EU declaration of conformity is available at the following internet addresses:

<https://genexis.eu/product/fibertwist/red/fibertwist-p6426>,

<https://genexis.eu/product/fibertwist/red/fibertwist-g6426>

Company Name

Genexis Netherlands B.V.

Signature of authorized person

Company Address

Lodewijkstraat 1a
5652 AC Eindhoven
The Netherlands



Name and title of authorized person

Maarten Egmond, CTO

Place of issue

Eindhoven
The Netherlands

Date of issue

2021-11-24

Frequency bands and maximum radio frequency power transmitted

The FiberTwist P6426/G6426 operates in the frequency bands of 2.4 GHz and 5GHz.

The maximum radio frequency power transmitted in these bands is:

- 20 dBm (100 mW) (EIRP) for the 2400 MHz – 2483.5 MHz band
- 23 dBm (200 mW) (EIRP) for the 5150 MHz – 5350 MHz band *
- 30 dBm (1000 mW) (EIRP) for the 5470 MHz – 5725 MHz band

* In EU, 5150 – 5350 MHz is restricted to indoor.

Revision 1.6 - November 2022 - Copyright © 2022 Genexis Netherlands B.V. All rights reserved.

Genexis assumes no responsibility for any inaccuracies in this document. Genexis reserves the right to change, modify, transfer, or otherwise revise this publication without notice.