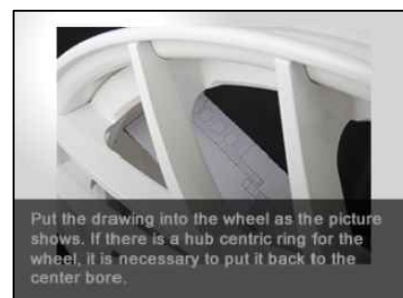
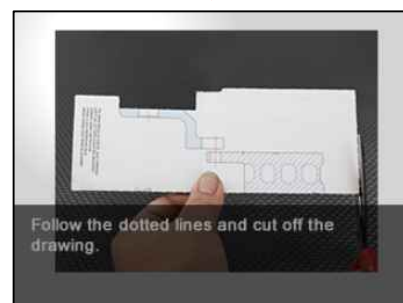
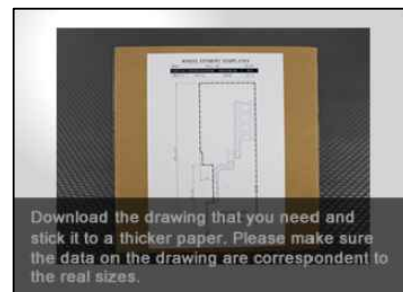
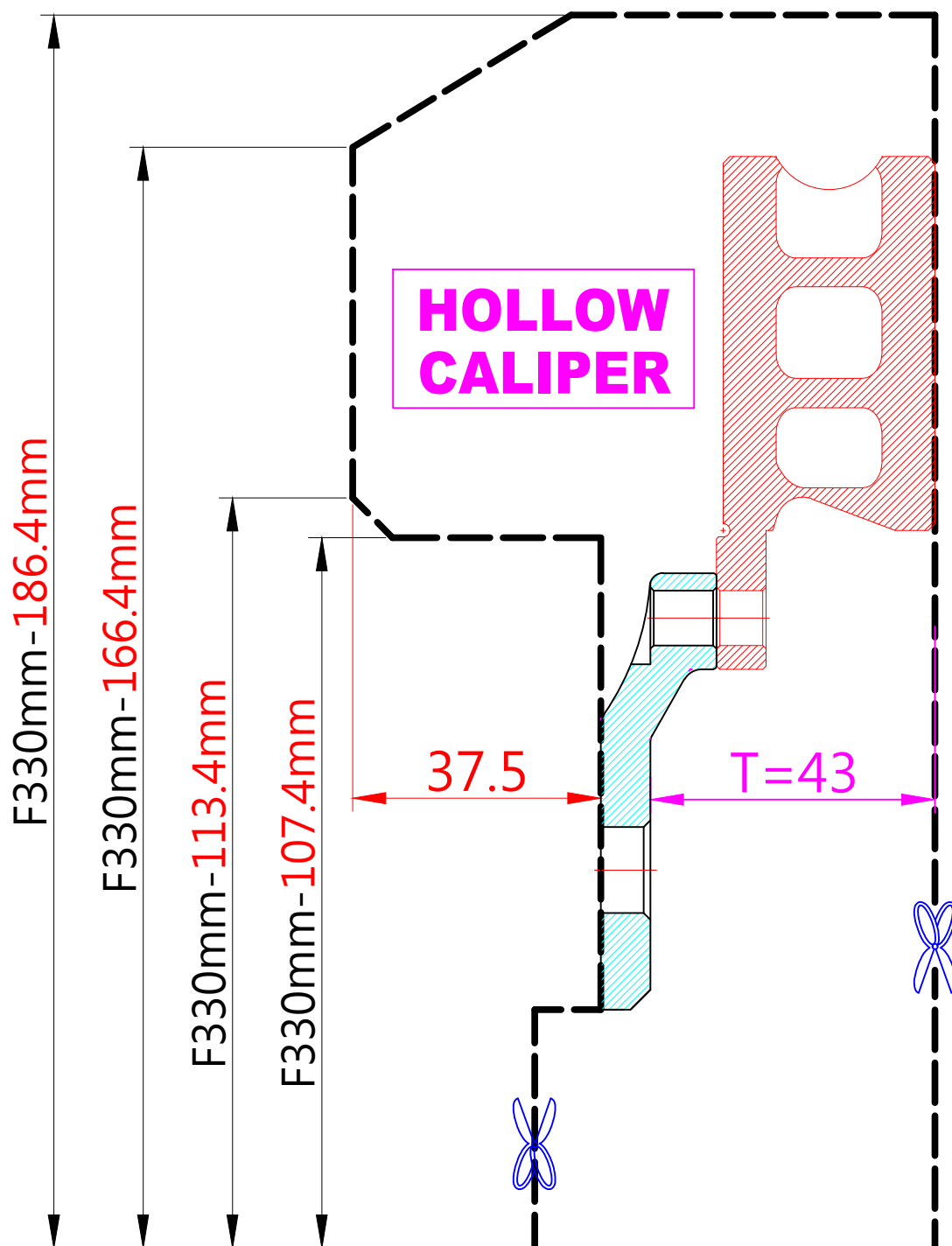


# WHEEL FITMENT TEMPLATES

MAZDA				MX-5 (NC) 2.0				05~10			
PARTS NO.		ROTOR DIAMETER		FRONT/REAR		PCD					
MA07-1		330mm X 32mm		FRONT		5X114.3					



The wheel fitment is only for your reference and it can not 100% ensure the clearance between caliper and rim is ok. if there is any interference issue, please change your wheel as possible.