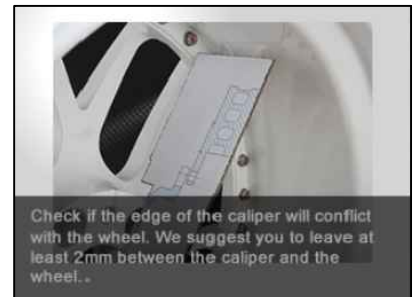
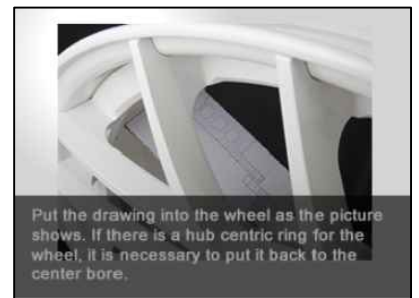
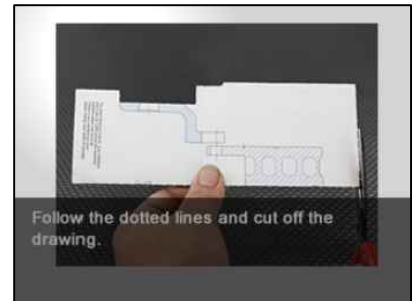
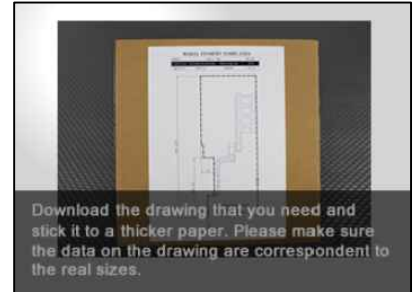
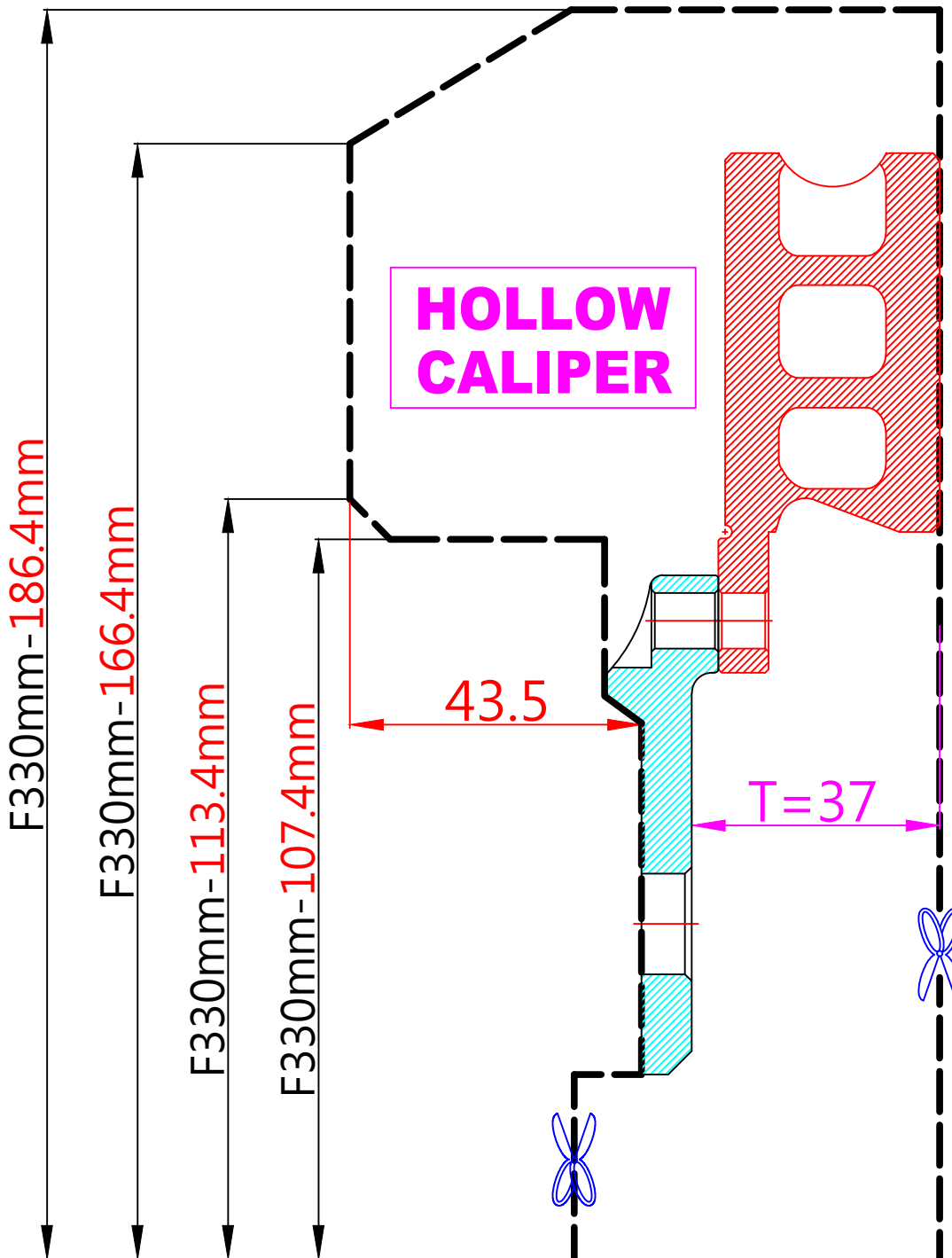


# WHEEL FITMENT TEMPLATES

MAZDA	MX-5 ND	15~UP
PARTS NO.	ROTOR DIAMETER	FRONT/REAR
MA07-2	330mm X 32mm	FRONT
		PCD
		4X100



The wheel fitment is only for your reference and it can not 100% ensure the clearance between caliper and rim is ok. if there is any interference issue, please change your wheel as possible.