

# Installation instruction do88 performance Remote radiator BMW M2 F87

Part number: WC-280

This instruction shows how to replace the OEM auxiliary radiator with do88 performance auxiliary radiator kit.

At this type of installation we always recommend that you have mechanical experience and knowledge about safety during work on vehicles.

#### Parts included:

1. Performance remote radiator
2. Carbon fiber air guide
3. Bracket
4. 2x M5x12 screws
5. 2x M6x16 screws
6. 2x M5 washers
7. 4x Rubber washers
8. 2x M6 washers
9. Thread locking fluid



1. Gently pull off the front rubber sealing.



2. Remove 6x Torx T30 screws.



3. Remove the inner wheel arch on both sides, 7x Hex 8mm screws on both sides.



4. Remove 11x Hex 8mm screws from the plastic cover underneath the engine.



5.

Remove 3x Hex 8mm screws on both sides inside the wheel arch.



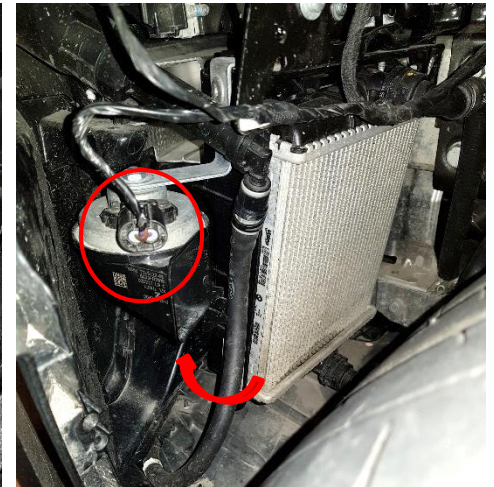
6.

Right side wheel arch:

1. Disconnect the washer fluid hose and turn the hose so it won't interfere with the horn when removing bumper.
2. Disconnect the horn cable connector

Left side wheel arch:

1. Disconnect the cable connectors for the horn and parking sensor.
2. Turn the washer fluid hose so it won't interfere with the horn when removing bumper.



7.

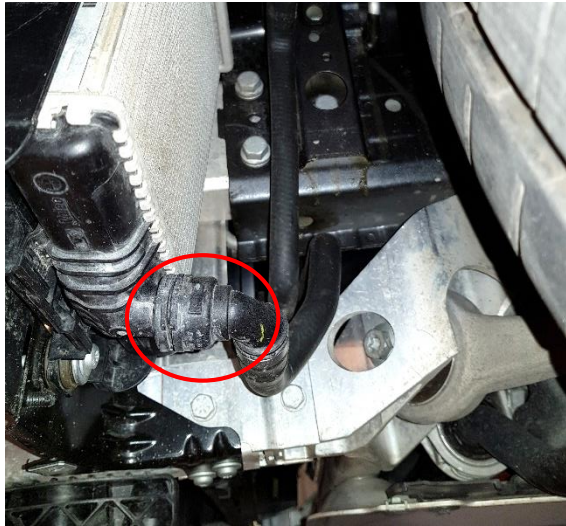
With the help of a friend now gently remove the bumper. Pull it straight forward.



8.

Drain the coolant fluid.

1. Remove the expansion tank lid.
2. Disconnect both auxiliary radiator hoses.



9.

Remove the top screws, 2x Torx T30.



10.

Remove the bottom screws, 2x Torx T30.



11.

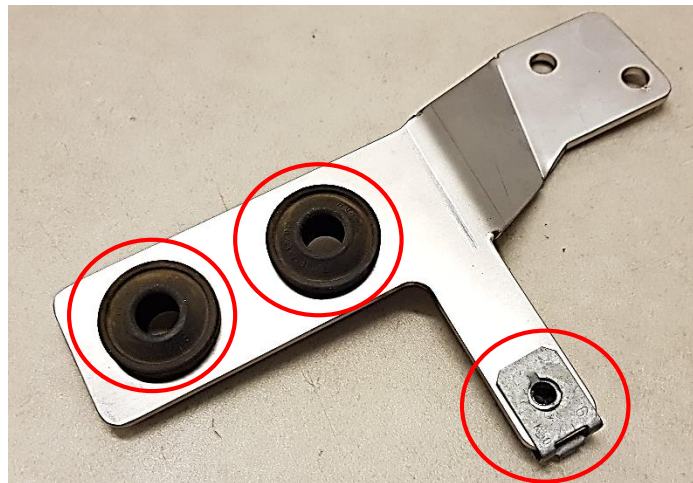
Remove the inner screws, 2x Torx T30.  
Reinstall these two screws once the radiator has been removed.



12. Remove 3x Torx T30 screws and 1x screw clip from the radiator support frame.



13. Install two of the rubber grommets and screw clip on the included bracket.



14. The Carbon fiber air duct has a strip of tape on both sides (inside).
1. Clean both sides of the radiator thoroughly with brake cleaner or similar.
  2. Peel away the whole protection film on **ONE** side.
  3. Peel away just a small bit 10mm on the other side.
  4. Center the carbon fiber duct along the welds on the radiator, then push it onto the radiator to stick.
  5. Center the other side and then pull out the protection film. Press on both sides.





- 15.** Install the bracket onto the radiator. In this order:  
M5x12/washer/rubber/bracket/rubber/radiator  
Use some of the included Loctite on both screws.

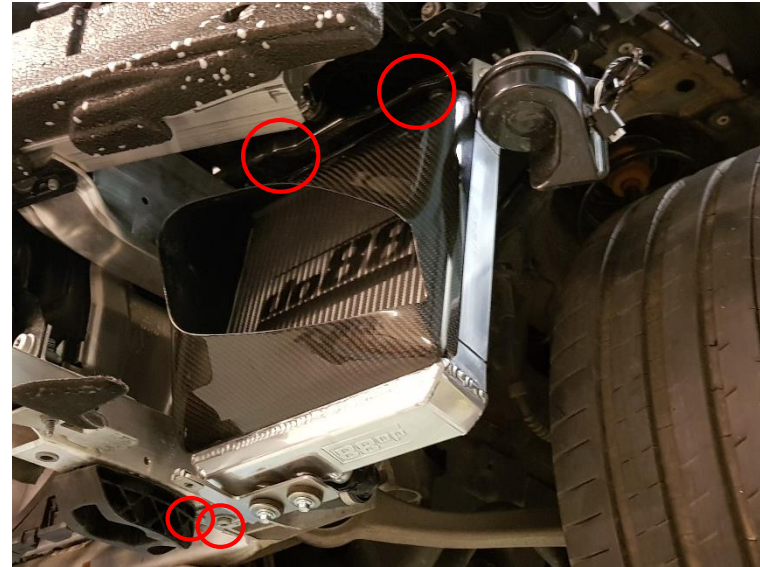


- 17.** You may need to trim this plastic tab slightly to make clearance for the lower radiator hose.



- 16.** Install the do88 radiator assembly into the car.  
The 2 top screws in this order:  
M6x16/washer/rubber/car/rubber/radiator  
Use some of the included Loctite on both screws.

Reinstall the 2x OEM Torx T30 screws on the lower bracket.



- 18.** Reinstall all other parts in reverse order.  
Remember to fill coolant and bleed for air.